

All down pipe positions and foul connection points are to be confirmed prior to commencement of construction.

KEY

NOTES

- Existing public foul sewer to remain
- Existing public combined sewer to remain
- Private surface water sewer and chamber. 110mm dia UPVC unless stated otherwise.
- Private surface water overflow sewer. 110mm dia UPVC unless stated otherwise.
- Private foul water sewer and chamber. 110mm dia UPVC unless stated otherwise.
- Flow control manhole (Refer to detail)
- Surface water package pump station 3.0 l/s max pumped flow.
- Cellular attenuation tank (Refer to specific detail)
- Rising main - To be specified by Pump station supplier
- Rainwater harvesting tank to BS En 16941:2018 5000 litre capacity with overflow to SW system

All works to comply with Building Regulations Approved document Part H.

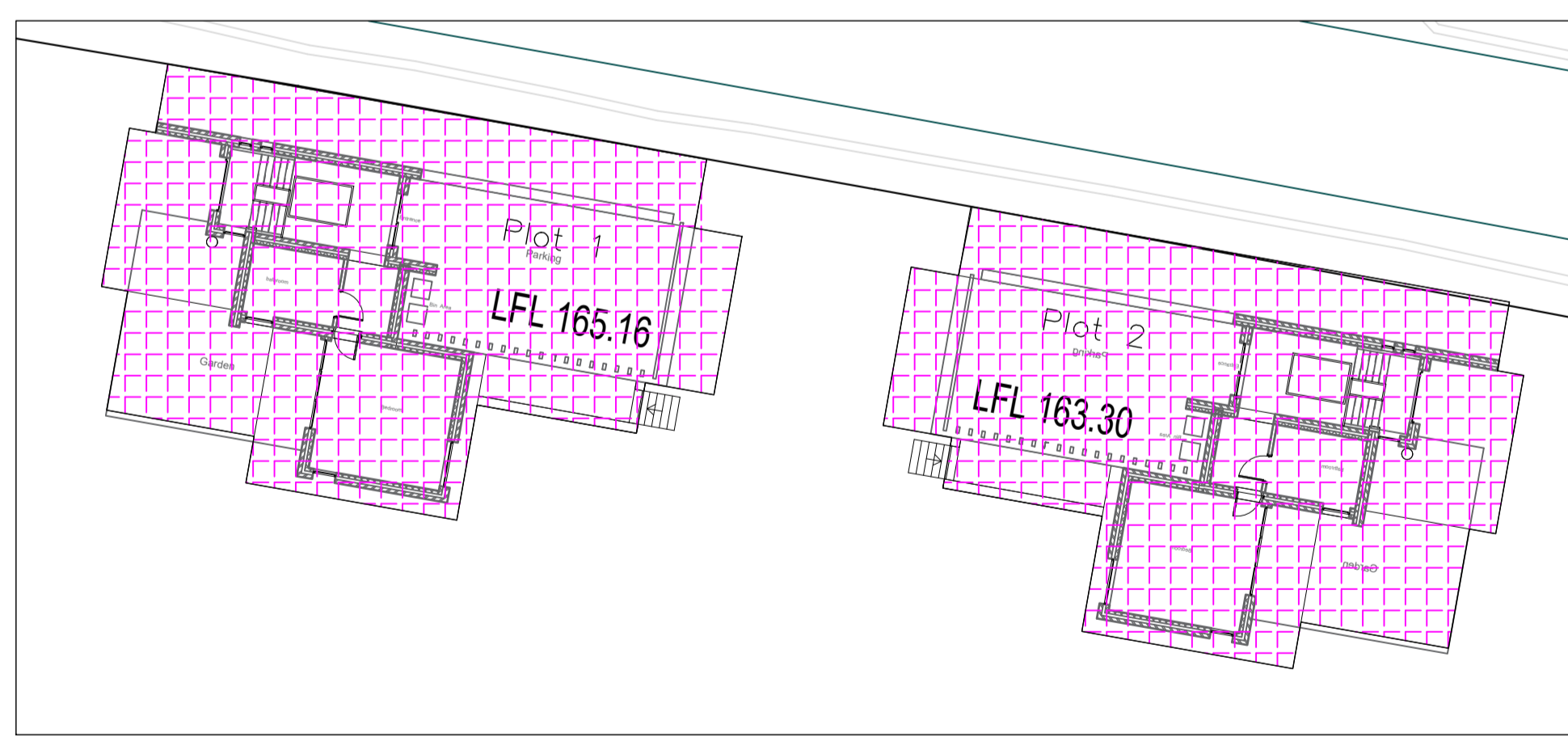
Drainage points shown are approximate and should be checked against the house type working drawings.

All existing drainage to be checked for line and level prior to commencement.

Invert levels shown indicate the invert level of the main channel within the chamber. Branches connect at +50mm.

At changes of direction the main channel is to be used with bends outside the chamber. Branches not to be used for changes of direction.

Floor Levels/Invert Levels shown are indicative only. Invert levels may need to be adjusted depending on finished floor/ground levels.



Impermeable area
428m²+10% urban creep=470m²

Rev	Details	Date	Drwn	Chk
	Alive Construction			

Greenhill Bank Road
Holmfirth

Drainage Layout

Dwg No. : STE/26/17/01
Date : 16-6-26
Scale : 1:200
Copyright © Shaun Tonge Engineering

SHAUNTONGE
ENGINEERING

11 Broomhead Road, Wombwell, Barnsley, S73 0SA.
Mobile 07528 278070 . Email Shauntongeengineering@yahoo.co.uk