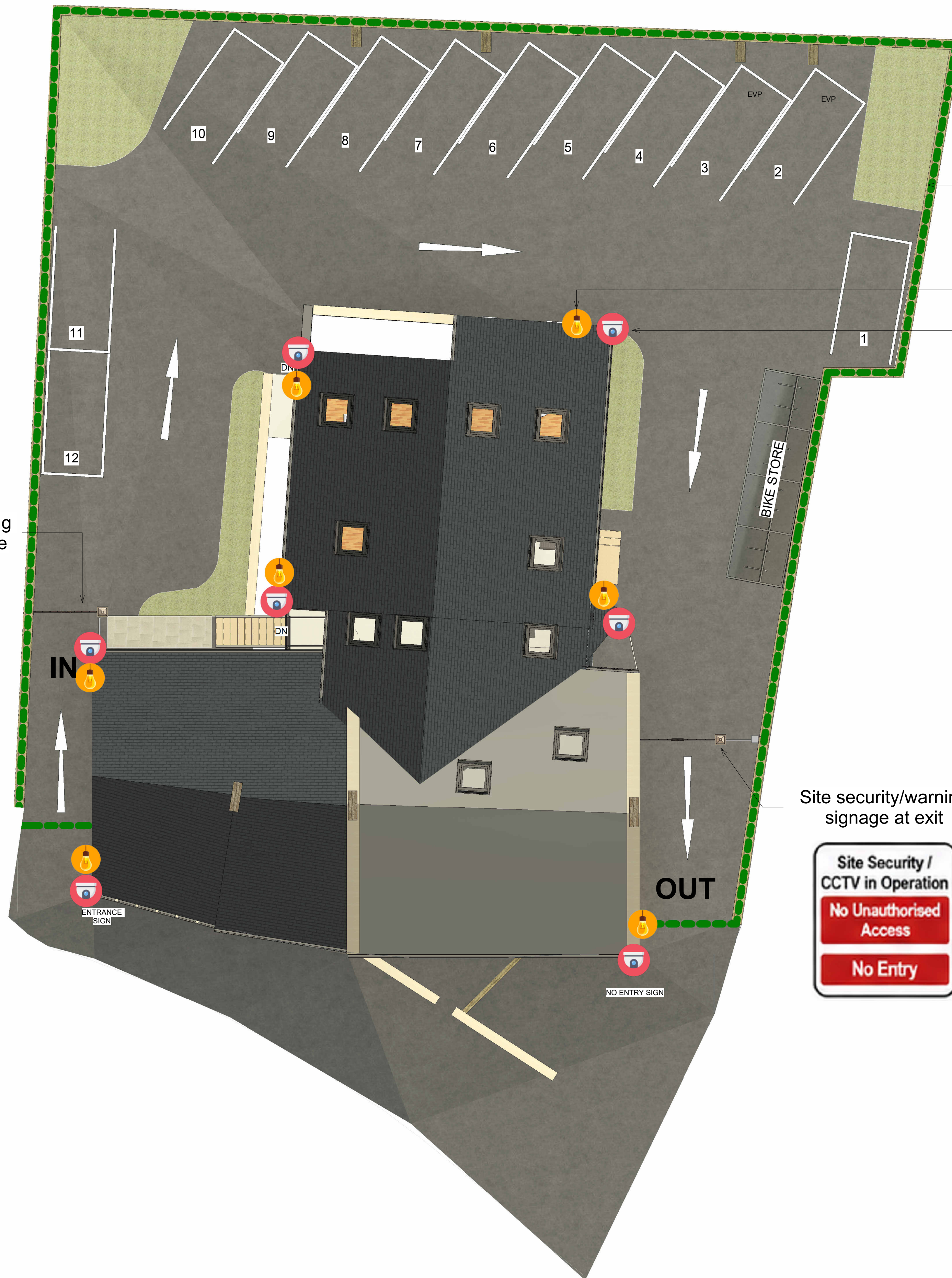


Only figured dimensions should be used.
Scaled dimensions should be checked with the Architect.
This drawing together with the design, is the property and copyright of the Architect and must not be reproduced without written permission



TEMPORARY 2.4m high Heras fencing/hoarding to the perimeter of the active construction area to prevent casual access during the construction phase

PIR security lighting

CCTV camera coverage

Site security/warning signage at entrance



Site security/warning signage at exit



SAMPLE	MEASURE	PROPOSED ARRANGEMENT	TIMING / RETENTION
	a. Perimeter fencing	Temporary 2.4m high Heras fencing and lockable site gates to prevent casual access to the site during the construction phase.	Installed prior to commencement and retained for the duration of the construction phase.
	b. Construction lighting	Temporary PIR / security lighting to site entrance, exit, parking court, compound and working areas, directed away from neighbouring properties and the highway.	For the duration of the construction phase.
	c. Measures to minimise crime during construction	Secure contractor compound, locked storage for tools, plant and materials, controlled access, warning signage and regular site checks.	For the duration of the construction phase.
	d. CCTV system	CCTV cameras covering the main entrance, exit, parking court, cycle store and principal building access points.	Installed prior to first occupation and retained thereafter.
	e. Access control measures	Lockable vehicle gates, pedestrian gates and secure controlled access to building entrances.	Installed prior to first occupation and retained thereafter.

Rev No. Description Drawn Date

DO NOT SCALE OFF THIS DRAWING

ACUMEN
Designers & Architects

acumenarchitects.co.uk 01484 544 000
Headrow House, Old Leeds Road, Huddersfield, Huddersfield HD1 1SG

Client
CAIRN CROSS

Project
COACH & HORSES HONLEY

Description
SITE PLAN CRIME + SECURITY

Drawing No. 2870_(200)12 Rev No.

Scale 1 : 100 @ A1 Date Drawn 23/04/26 Drawn By EP Authorised By JC

Purpose of Issue
Planning Building Regs Tender Construction Comment Info