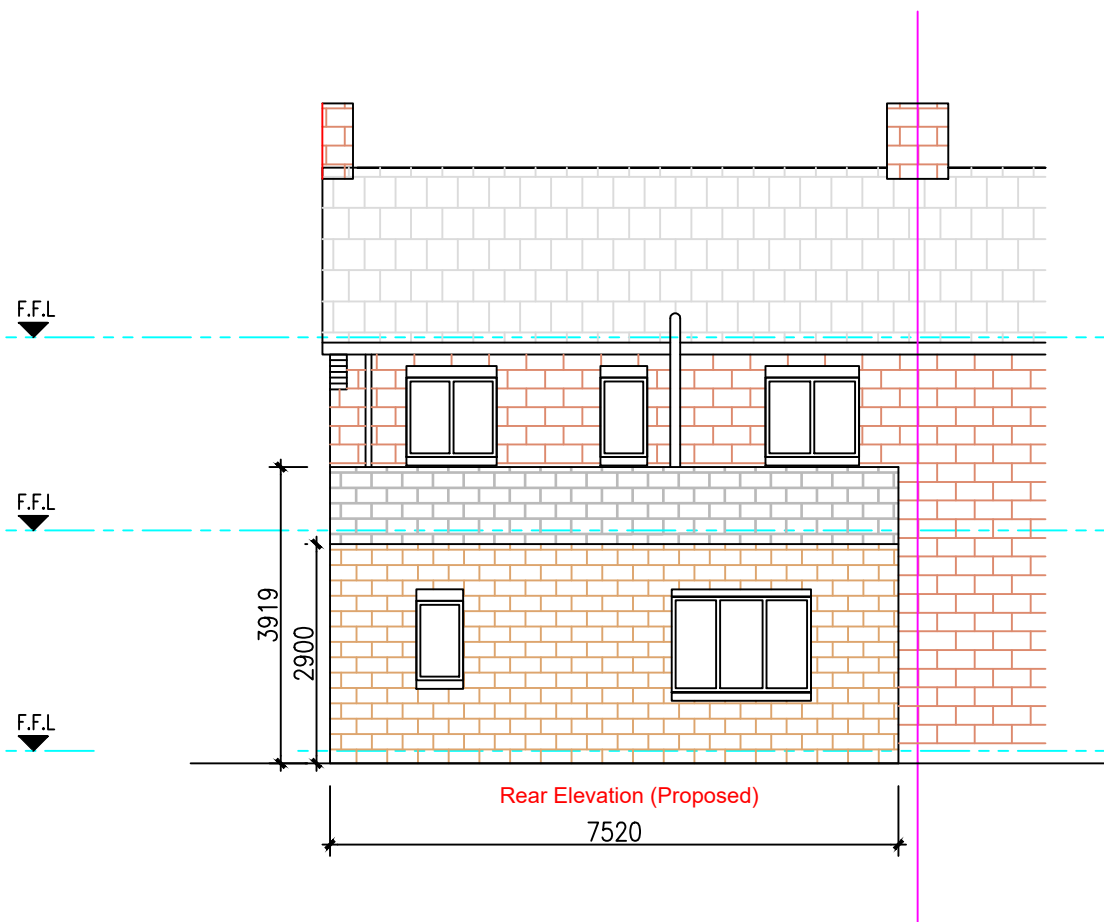
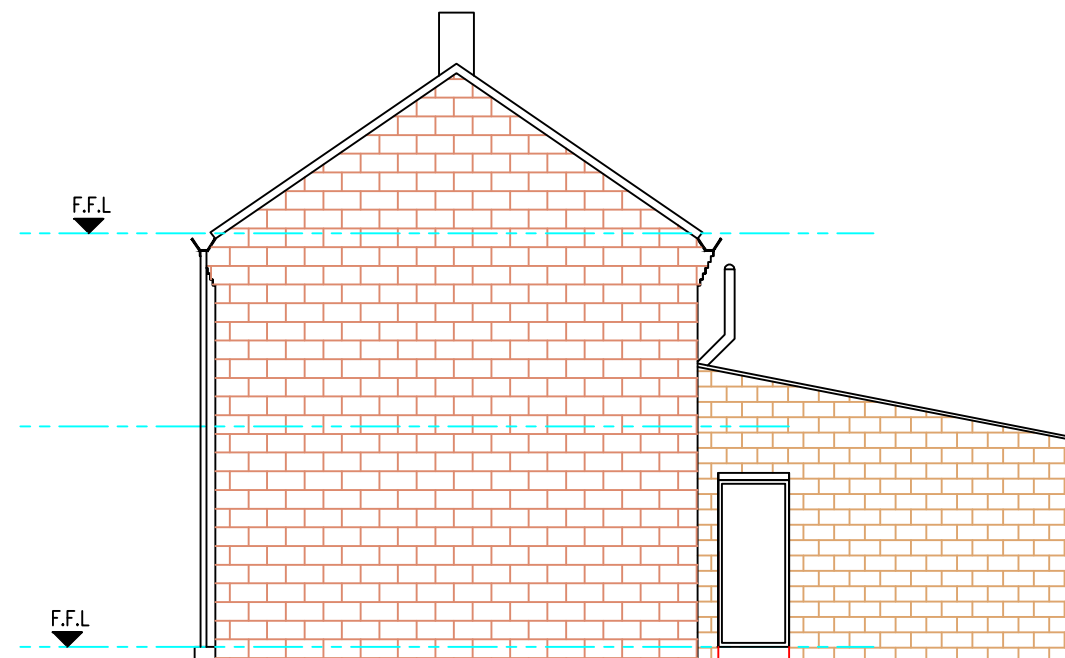


GROUND FLOOR PLAN (Proposed)



Rear Elevation (Proposed)



Side Elevation (Proposed)

DREAMWORLD HOMES LTD
 M. Sidat
 15 Upper road, Dewsbury, WF13 2DL
 Mob: 07749 325035

Proposed single-storey rear extension at
 38 West Park Road, Batley, WF17 7EL

Scale: 1:100 Page size: A3