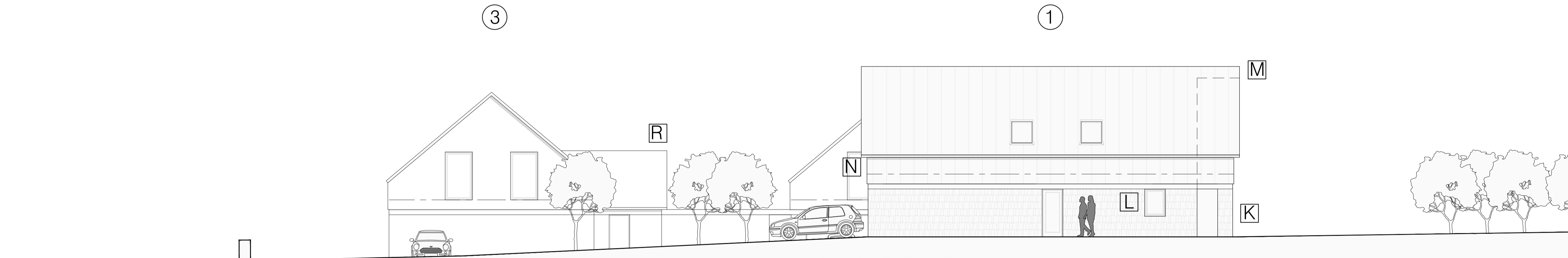
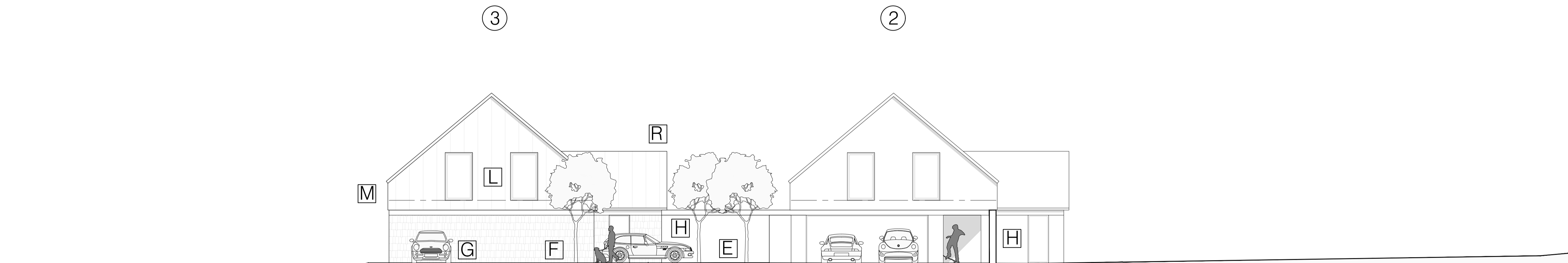


Road Elevation 1: 100

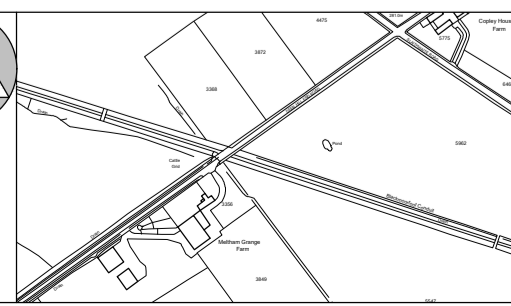
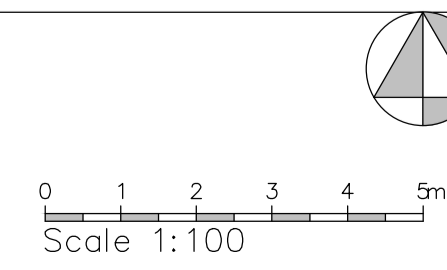


Entrance Elevation 1: 100



Courtyard Elevation 1: 100

- Notes:
- A_Deer Hill End Road
 - B_Existing gated access and track to Meltham Grange Farm
 - C_Concrete Yard
 - D_Outline of existing portal framed agricultural storage buildings with blockwork plinth/ profiled metal wall and roof cladding to be demolished
 - E_Proposed new Farmyard with notional driveway, parking apron undertaken in accordance with MHCLG note on the permeable paving of front gardens
 - F_Low level planting as specialist detail
 - G_Visitor space with aggregate surfacing retained in geo-grid
 - H_Stone enclosing wall to courtyard with gated access points to private garden areas
 - I_Paved perimeter footpath and seating areas linked to courtyard as specialist detail
 - J_Timber post and rail fencing/ indigenous hedging to define plots
 - K_Coursed natural stone plinth to match farmhouse with feature string course
 - L_Ppc aluminium windows and doors in opening formed in walling as SE detail
 - M_Standing seam wall and roof cladding with proprietary rooflights installed in line with manufacturers recommendations.
 - N_Seamless metal gutters and downpipes linked to S/ w drainage
 - O_Recessed glazed elevation as specialist detail to meet AD_O requirements
 - P_Covered ramped approach to entrance door with oversize door and level threshold
 - Q_Double height entrance space with rooflight over
 - R_Single storey snug space with open ceiling and garden access
 - S_Island kitchen as specialist detail
 - T_Feature timber return stair with open landing
 - U_En-suite bathroom with sanitaryware linked to new drainage
 - V_Study space with rooflight
 - W_Refuse/ recycling storage
 - X_Indicative drainage subject to specialist detail
 - Y_Proposed packaged treatment plant with service access from existing track.
 - Z_Drainage field as specialist detail defined by existing/ new fencing



Project	Proposed replacement dwellings at Meltham Grange Farm, Deer Hill End Road, Meltham	
Client	Mrs Maxine Parker, Meltham Grange Farm, Deer Hill End Road, Meltham HD9 5PT	
Dwg Title	(25430)8_Northern Elevations	A
Scale	1: 100 @ A1	
Date	Apr 26	