


TREE RISK SURVEY

DATE		17/03/2026 & 18/03/2026		CLIENT		Millbank North (Chidswell & Brackenhill Lane)		WEATHER CONDITIONS		Sunny		 ROBINSON FORESTRY LTD					
TIME		09:00-17:00 & 09:30-15:30		SITE ADDRESS		Chidswell, WF12 7SG Brayton, YO8 4JW		SURVEY TYPE		Basic & Detailed Assessment							
SURVEYOR		Jamie Burnett (PTI)		SURVEYED TARGETS		Properties, Public Highways, Public Rights of Way, Third Party Boundaries		RISK ZONES IDENTIFIED		High - Low Use							
TREE DETAILS						SURVEY LIMITATIONS	CONDITION		TARGET		RISK FEATURES	VALID RISK ASSESSMENT				RECOMMENDATIONS	REVIEW
TREE NUMBER	SPECIES	AGE CLASS	HEIGHT (m)	STEM DIAMETER (cm)	CROWN SPREAD (m)	LIMITATIONS	PHYSIOLOGICAL CONDITION	STRUCTURAL CONDITION	TARGET	SPEED LIMIT	RISK FEATURES & NOTES	LIKELIHOOD OF OCCUPATION	CONSEQUENCES	LIKELIHOOD OF FAILURE	RISK RATING	RECOMMENDATIONS	REVIEW YEAR
6001	Oak (Quercus robur/petraea)	Mature	15-20m	50cm	14m	N/A	Healthy	Moderate	People	N/A	There are four partially or entirely failed medium-sized branches at the top of the crown on the NE side of the stem. Some are not over the target, some are resting in a neighbouring tree over the target.	4-Low	2-High	2-High	Not Tolerable	Remove partially and entirely failed branches.	2031
6002	Oak (Quercus robur/petraea)	Young	05-10m	20cm	02m	N/A	Dead	Poor	People	N/A	The tree is dead. There is visible decay to the stem. There is visible movement in the root plate.	4-Low	2-High	2-High	Not Tolerable	Fell as close as reasonably practicable to ground level.	N/A
6003	Elder (Sambucus nigra)	Mature	05-10m	20cm	03m	N/A	Poor	Moderate	Property	N/A	The tree is almost dead, with very little living growth observed at the time of inspection; some epicormic growth to the lower 2.5m of the stem.	Property	4-Low	2-High	Tolerable	Monitor as per inspection cycle.	2028
6004	Birch (Betula pendula/pubescens)	Mature	10-15m	30cm	02m	N/A	Dead	Poor	People	N/A	Large dead tree which has previously lost the top of the crown. Fungal fruiting bodies on all sides of likely Fomitopsis betulina from the base of the stem to 4m above ground level. The tree is comprised of two stems, with the larger stem to the NE leaning towards the target. Decay is visible from the base to the top of the remaining stem.	4-Low	1-Very High	3-Moderate	Not Tolerable	Fell as close as reasonably practicable to ground level.	N/A

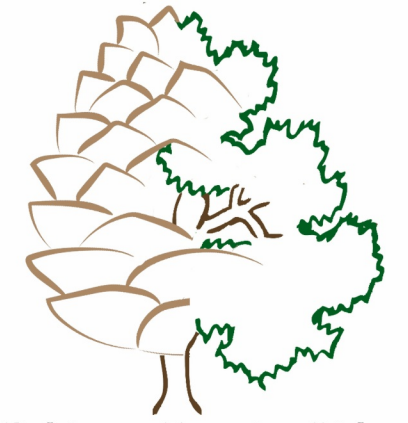
TREE RISK SURVEY

TREE DETAILS						SURVEY LIMITATIONS	CONDITION		TARGET		RISK FEATURES	VALID RISK ASSESSMENT				RECOMMENDATIONS	REVIEW
TREE NUMBER	SPECIES	AGE CLASS	HEIGHT (m)	STEM DIAMETER (cm)	CROWN SPREAD (m)	LIMITATIONS	PHYSIOLOGICAL CONDITION	STRUCTURAL CONDITION	TARGET	SPEED LIMIT	RISK FEATURES & NOTES	LIKELIHOOD OF OCCUPATION	CONSEQUENCES	LIKELIHOOD OF FAILURE	RISK RATING	RECOMMENDATIONS	REVIEW YEAR
6005	Birch (Betula pendula/pubescens) x4	Mature	10-15m	30cm	03m	N/A	Dead	Poor	People	N/A	The tree is dead. There are degraded fungal fruiting bodies of likely Fomitopsis betulina on all sides of the stem from the base of the stem to 8m above ground level. The tree is leaning over the target.	4-Low	1-Very High	3-Moderate	Not Tolerable	Fell as close as reasonably practicable to ground level. There are 3 other dead birch trees within 5m. Remove adjacent dead birch.	N/A
6006	Birch (Betula pendula/pubescens) x5	Mature	05-15m	20cm	02m	N/A	Dead	Poor	People	N/A	A failed stem which is resting on the ground and a neighbouring tree, over the target. There are also 4 other dead birch trees on the W side in reach of the target.	4-Low	2-High	2-High	Not Tolerable	Fell all stems as close as reasonably practicable to ground level.	N/A
6007	Birch (Betula pendula/pubescens)	Mature	10-15m	25cm	03m	N/A	Dead	Poor	People	N/A	The tree is dead. There is visible decay to the stem from the base of the stem to 4m above ground level. There are fungal fruiting bodies present, likely Fomes fomentarius, on all sides of the stem from the base of the stem to 1m above ground level. The tree is leaning towards the target.	4-Low	2-High	2-High	Not Tolerable	Fell as close as reasonably practicable to ground level.	N/A
6008	Cypress, Lawson's (Chamaecyparis lawsoniana)	Mature	10-15m	30cm	04m	Vegetation	Healthy	Poor	People	N/A	The tree has failed at the base into a neighbouring tree over a currently unused area of the garden. The base of the tree is inaccessible due to vegetation.	4-Low	1-Very High	3-Moderate	Not Tolerable	Fell as close as reasonably practicable to ground level. No tag on the tree. Clear vegetation to the base of neighbouring cypress trees and reinspect.	N/A
6009	Spruce, Norway (Picea abies)	Mature	10-15m	35cm	08m	N/A	Poor	Moderate	Property	N/A	The tree is in significant physiological decline. Interior needles have been lost with only living growth at the ends of the branches. The tree is in an exposed position.	Property	3-Moderate	3-Moderate	Tolerable	Monitor in 1-year intervals. Consider proactive removal whilst the property is vacant.	2027

TREE RISK SURVEY

TREE DETAILS						SURVEY LIMITATIONS	CONDITION		TARGET		RISK FEATURES	VALID RISK ASSESSMENT				RECOMMENDATIONS	REVIEW
TREE NUMBER	SPECIES	AGE CLASS	HEIGHT (m)	STEM DIAMETER (cm)	CROWN SPREAD (m)	LIMITATIONS	PHYSIOLOGICAL CONDITION	STRUCTURAL CONDITION	TARGET	SPEED LIMIT	RISK FEATURES & NOTES	LIKELIHOOD OF OCCUPATION	CONSEQUENCES	LIKELIHOOD OF FAILURE	RISK RATING	RECOMMENDATIONS	REVIEW YEAR
6010	Spruce, Norway (Picea abies)	Mature	10-15m	40cm	09m	Piled green waste, ivy.	Moderate	Good	Property	30	The tree is showing signs of minor decline. The stem is completely obscured by ivy, and the bottom 1m of the stem is completely obscured by green waste.	Property	2-High	3-Moderate	Tolerable	Remove green waste from around the base of the stem and sever ivy from the ground to 1.5m. Reinspect once ivy has died back, 1-2 years. No tag on the tree.	2027

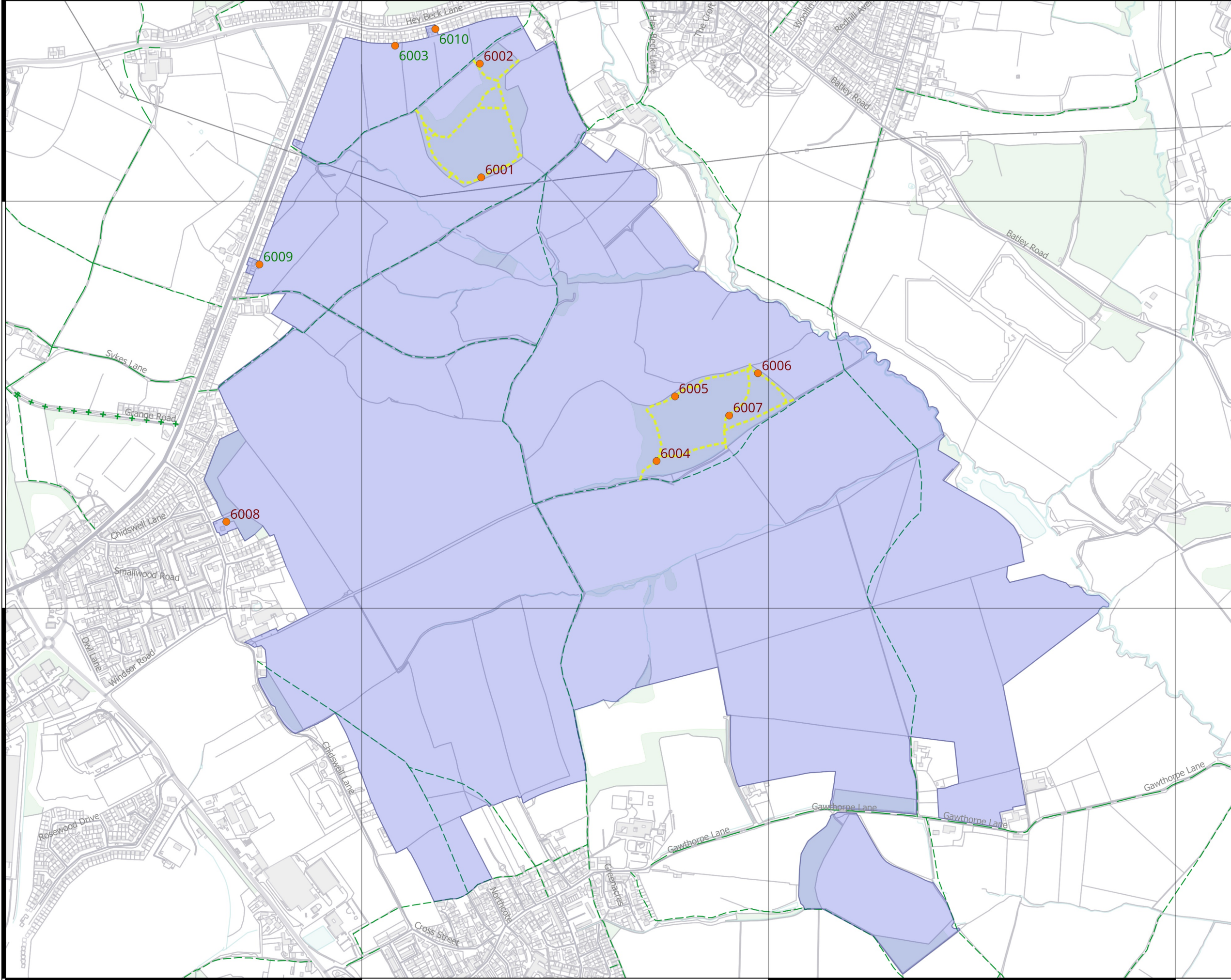
Chidswell and Brackenhill Lane - Appendix 2: Tree Location Plan - Map 1



Robinson Forestry Ltd

Legend

- Estate Ownership
- Woodland Footpaths
- Tree Risk Rating**
 - Not Tolerable
 - Tolerable
- Public Rights of Way**
 - Bridleway
 - Footpath



March 2026



Jamie Burnett

jamie.b@robinson-forestry.co.uk
www.robinson-forestry.co.uk

What3Words: tango.pastime.port

Grid Reference: SE 277 233

Scale: 1:9,000 at A3 Contains OS data © Crown copyright 2023 © Robinson Forestry Ltd and database rights 2023 OS 0100042940