

Huddersfield Market – Temporary Market

HMH-GSA-XX-XX-T-A-0005

12-01-2026

Cabins Outline Specification

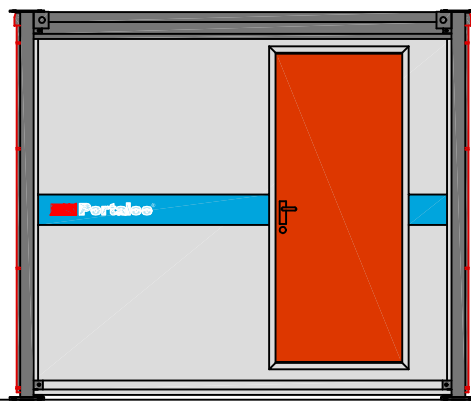
Revision History

Rev	Date	Comments	WTN	CHK
P01	09/01/26	S3 - For Review and Comments	NM	NM
P02	16/01/26	S4 - For Tender	FP	CL

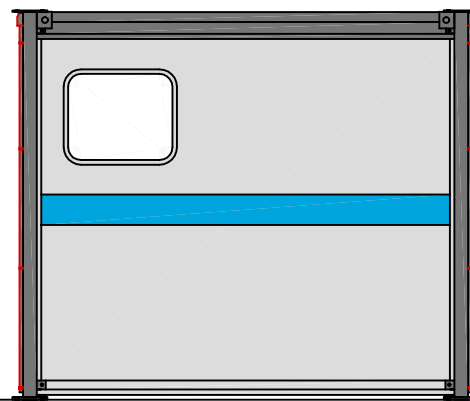


Portaloos[®]

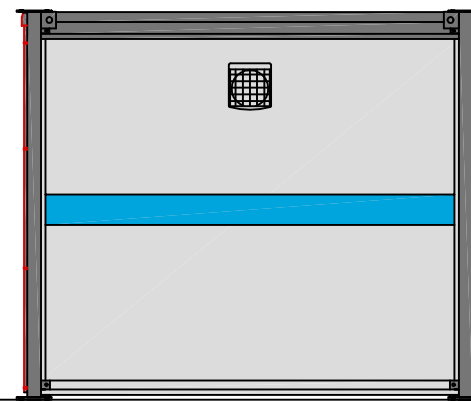
Portaloos PL101 (Type A) Standard Specification Drawing



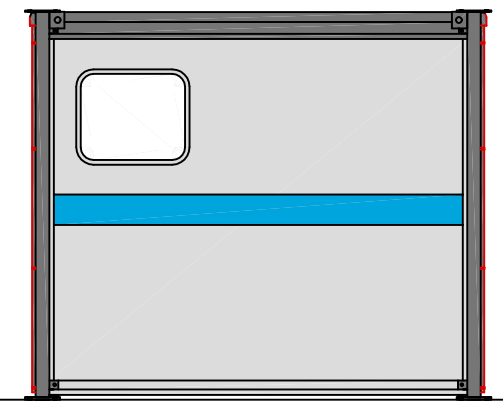
Elevation To Entrance



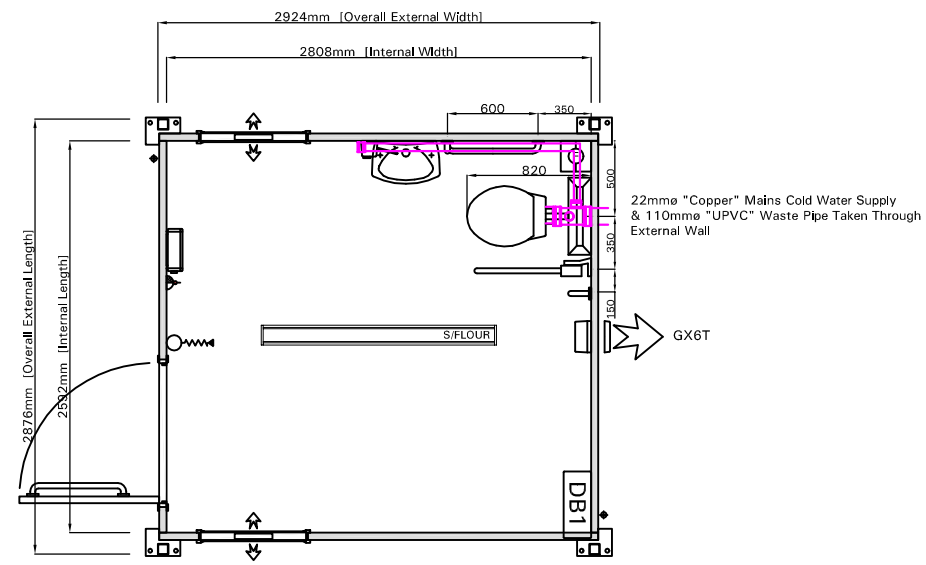
Elevation To Side



Elevation To Rear



Elevation To Side



Floor Plan [Standard]



Portakabin Limited Whistleberry Road Hamilton ML3 0EJ
Telephone 01698 429414 Fax 01698 459499
www.portakabin.co.uk

PL101 - A

Portakabin Portaloo Type A

Accessible Toilet

Dimensions

External Length	3.09m
External Width	2.90m
External Height	2.61m
Leg Centres (length)	2.85m
Leg Centres (width)	2.81m
Shell weight	1288kg
Max handling weight	2165kg



Plumbing Connections

Water Inlet	1 x 15mm
Waste Outlet	1 x 110mm
Running pressure required	1 bar
Inlet flow rate required	20 litres per minute

Electrical Loading

Single Phase 230v
24 Amp (total)

Fixtures & Fittings

- 1 x 926mm Outward Opening External Door with Lock
- 2 x High Level, Obscured Windows
- 1 x DDA Compliant Grab Rail Pack
- 1 x WC
- 1 x Wash Hand Basin
- 1 x Auto Sensor (3kw) Water Heater
- 1 x Disabled Alert Alarm
- 1 x Fold Down Baby Change Unit
- 1 x High Level Convector Heater
- 1 x Extractor Fan
- 1 x Soap Dispenser
- 1 x Toilet Roll Dispenser
- 1 x Paper Towel Dispenser
- 1 x Waste Paper Bin
- 1 x Battery Operated Air Freshener
- 1 x Hat & Coat Hook
- 1 x Mirror

Important Building Information

All Portaloo buildings are thoroughly cleaned and tested prior to delivery. An electrical test certificate and functional plumbing test certificate are provided within the building for inspection.

The final connections from services on site into the Portaloo building should be carried out by a suitably qualified and competent professional.

The following services are excluded unless otherwise stated. A quotation is available on request:

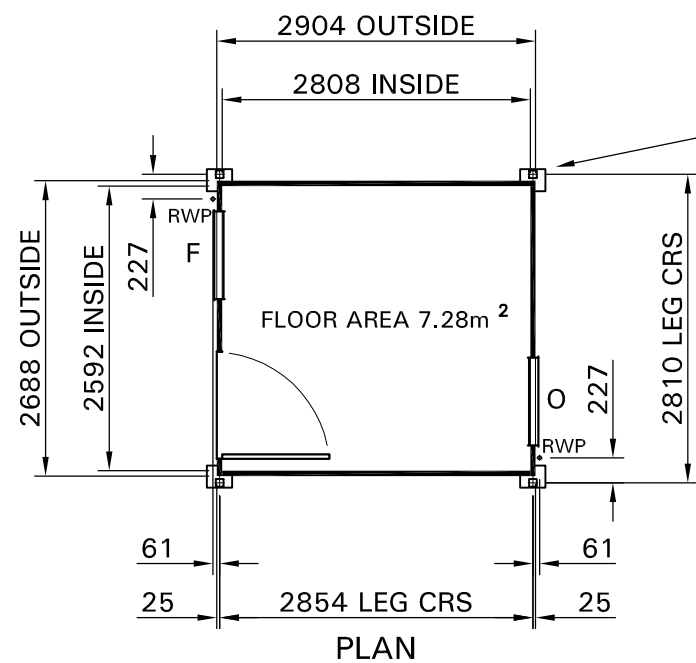
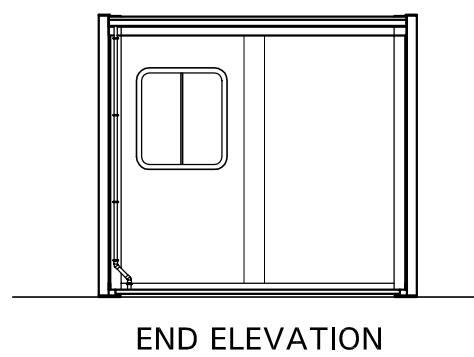
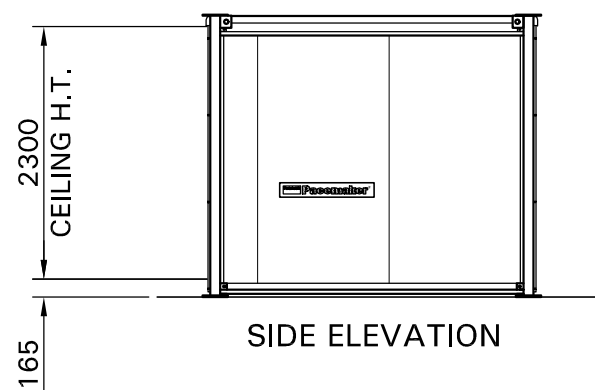
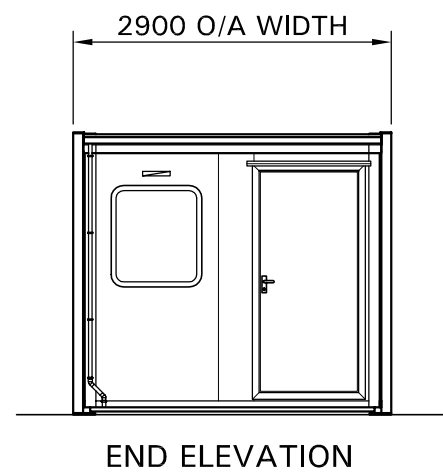
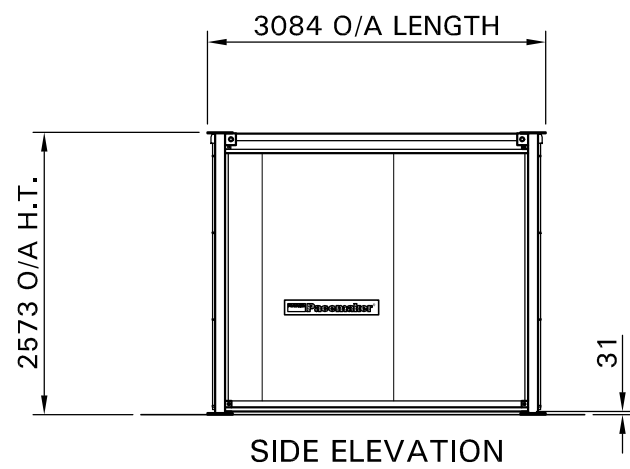
- ▶ Foundation pads and enabling works
- ▶ On site supervision of installation and removal activities
- ▶ Final connection to services on site
- ▶ Chlorination of pipework
- ▶ WRAS compliance - upgrade of all fittings to meet the Water Supply (Water Fitting) Regulations 1999
- ▶ Foul waste containment and mains free water solutions
- ▶ Access solutions
- ▶ Replenishment of consumables

STEEL RAMPS

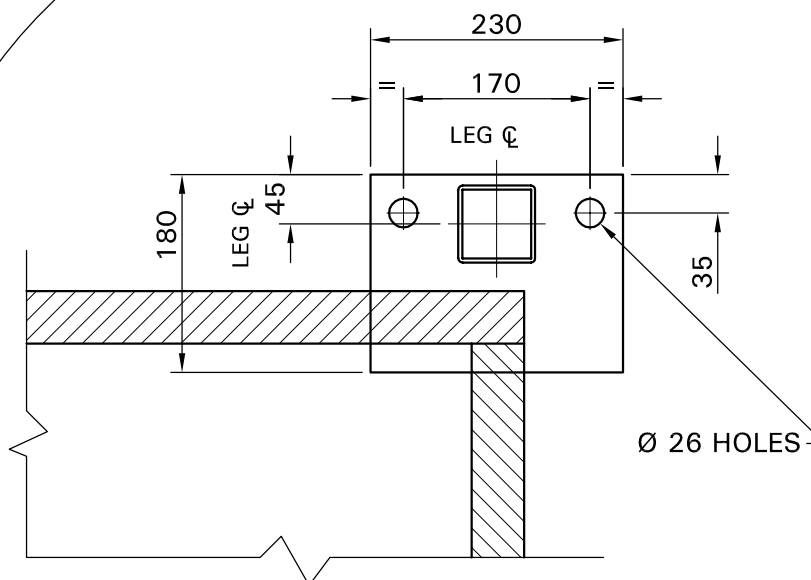
Cost effective access for buildings under 30m²

- Features all-steel frames and handrails
- Easily reconfigured and ideal for short term hires
- Configured to meet client specifications: left, right or straight ahead access to single or double doors
- Telescopic legs for height adjustment and levelling with a slip resistant ramp surface
- 1200mm unobstructed width to give 'reasonable provision' under the DDA
- Solution used for Election ramps





LEG BASEPLATE DETAIL PLAN VIEW



Portakabin Limited Huntington York YO32 9PT
 Telephone 01904 611655 Fax 01904 611644

Project	PACEMAKER SERIES 8	
Client		

Title	PK101 SPECIFICATION DRAWING	
-------	-----------------------------------	--

Date	11/11/94	Drawn	C. GURDEN
------	----------	-------	-----------

Scale	1:5 & 1:50 @ A2		
-------	-----------------	--	--

Drg. No.	BR0019	Rev.	C
----------	--------	------	---

- KEY**
- O OPEN WINDOW
 - F FIXED WINDOW
 - RWP RAIN WATER PIPE

FOUNDATIONS

Simple foundations or level hardstandings are required to be capable of taking the foundation design load at each Lodastrut leg position of 10 kN, which includes the dead weight of the unit, imposed floor load of 3kN/m², imposed roof load of 0.75 kN/m² and a basic wind load of 50 m/s. The foundations are to be designed in accordance with BS 8004 with level tops of a tolerance of ± 3mm.
 The top level of the foundations must ensure a clearance between the ground and the underside of the building.
 It is recommended that professional advice is obtained for the design. All Lodastrut legs should be fully retracted onto the safety stops with the leg pins fitted through the outer legs and secured by the locking cotter.

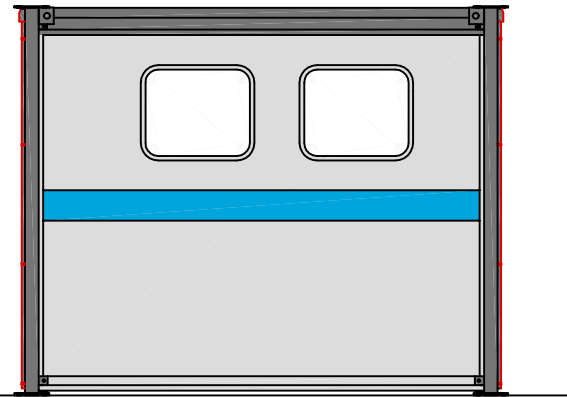
STANDARD COLOURS

- | | |
|----------------------------|--|
| External : Walls | - Silk Grey nearest BS ref. 10 A 05 |
| Doors | - Golden Amber nearest BS ref. 08 E 51 |
| Roof | - White nearest BS ref. 00 E 55 |
| Fascia & Corner Wall Trims | - Blue Grey nearest BS ref. 18 B 29 |
| Bottom Wall Trims | - Silk Grey nearest BS ref. 10 A 05 |
| Legs | - Blue Grey BS 4800 18 B 29 |

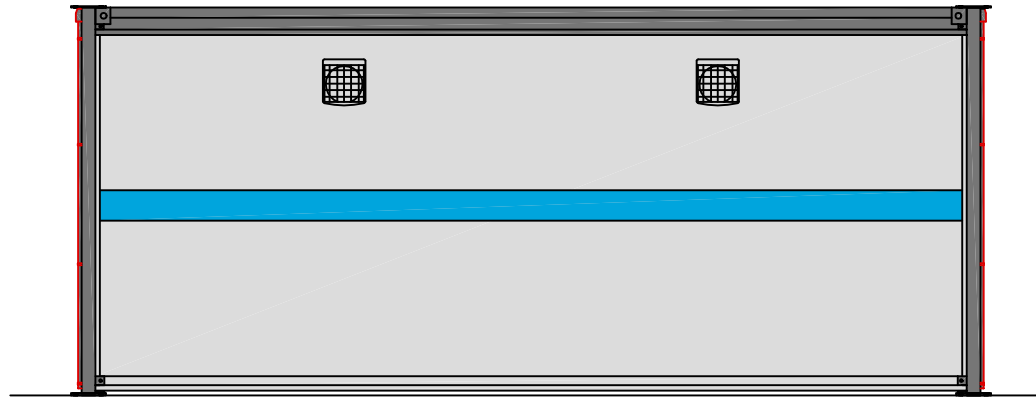


Portaloos®

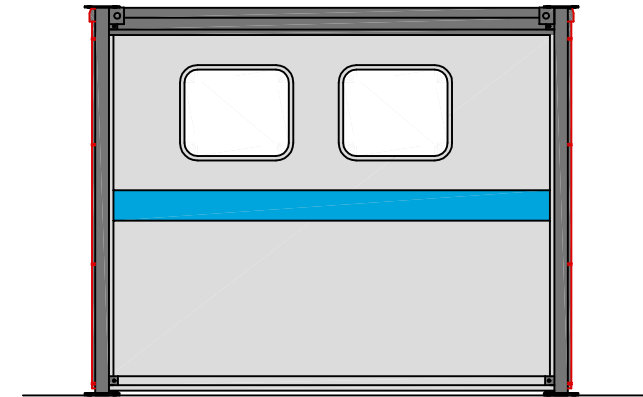
Portaloo PL202 (Type I) Standard Specification Drawing



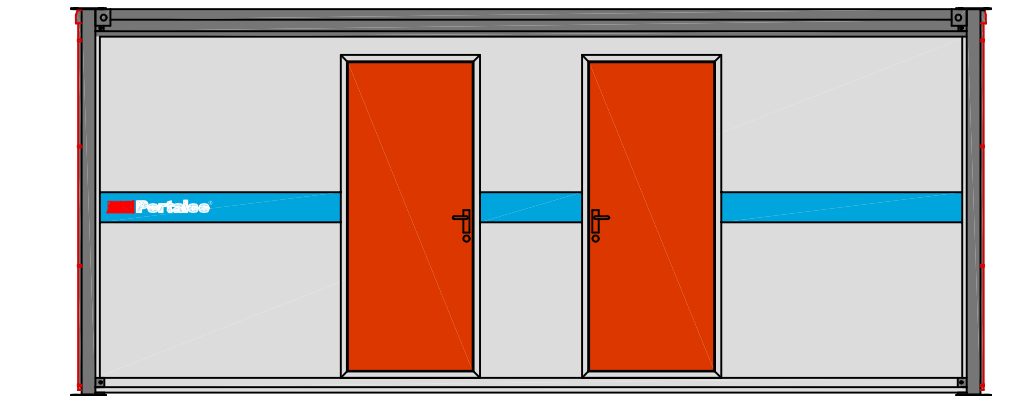
Elevation To Side



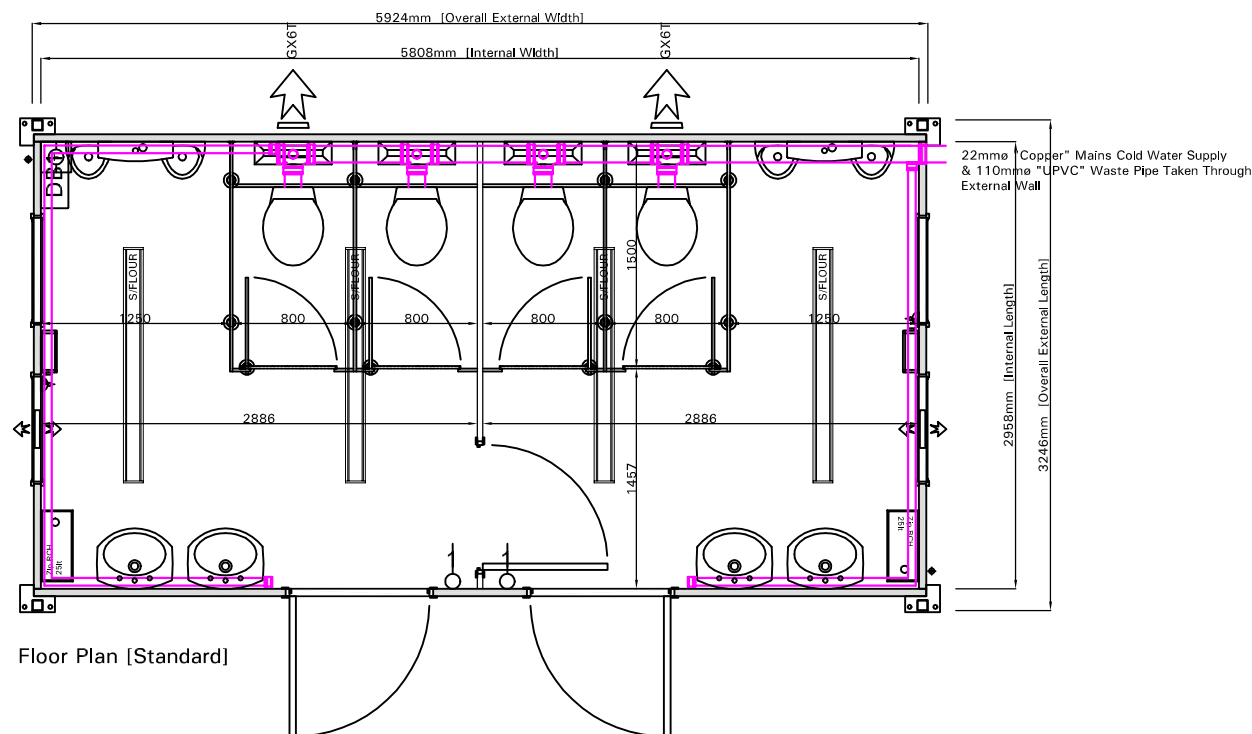
Elevation To Rear



Elevation To Side



Elevation To Entrance



Portakabin Limited Whistleberry Road Hamilton ML3 0EJ
Telephone 01698 429414 Fax 01698 459499
www.portakabin.co.uk

PL202 - I

Portakabin Portaloo Type I

Male and Female Toilet

Dimensions

External Length	6.09m
External Width	3.27m
External Height	2.61m
Leg Centres (length)	5.85m
Leg Centres (width)	3.18m
Shell weight	2901kg
Max handling weight	3205kg



Plumbing Connections

Water Inlet	1 x 22mm
Waste Outlet	1 x 110mm
Running pressure required	1 bar
Inlet flow rate required	48 litres per minute

Electrical Loading

Single Phase 230v
46 Amp (total)

Fixtures & Fittings

- 2 x 926mm Outward Opening External Door with Lock
- 1 x Internal Connecting Door with Lock
- 4 x High Level, Obscured Windows
- 4 x Wash Hand Basin
- 2 x Urinal
- 5 x WC
- 2 x 25L Water Heater
- 2 x High Level Convector Heater
- 2 x Extractor Fan
- 2 x Soap Dispenser
- 2 x Paper Towel Dispenser
- 2 x Waste Paper Bin
- 4 x Toilet Roll Dispensers
- 2 x Battery Operated Air Freshener
- 4 x Hat & Coat Hook
- 4 x Mirror

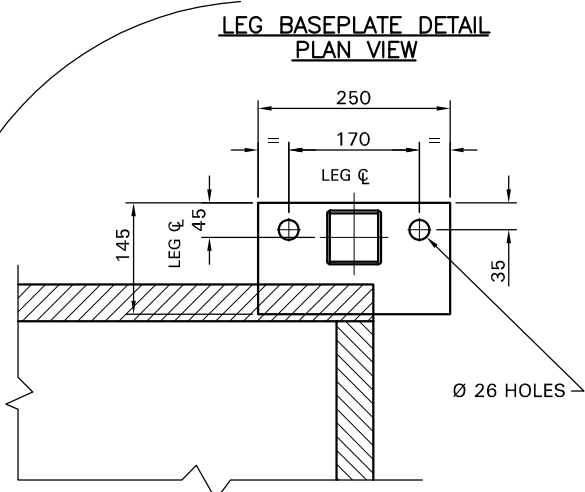
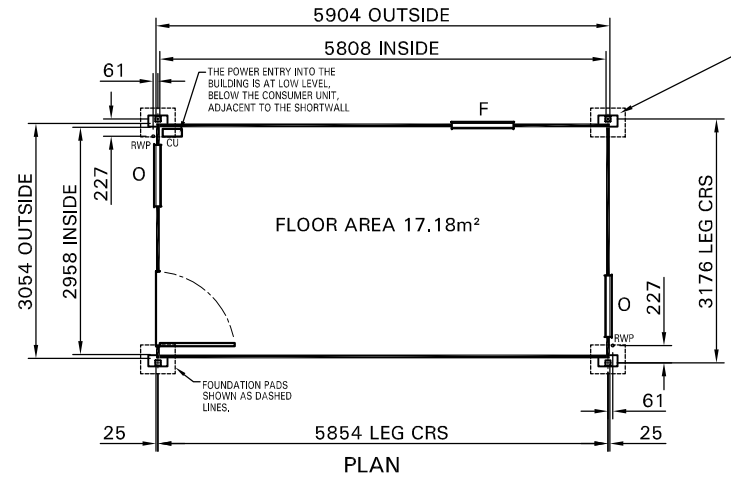
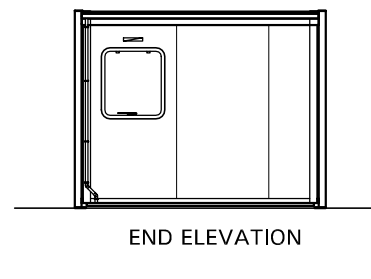
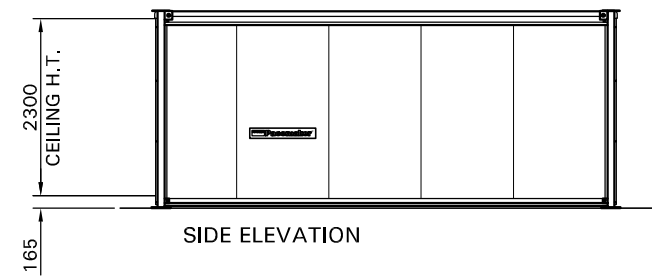
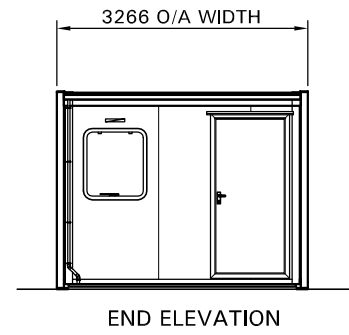
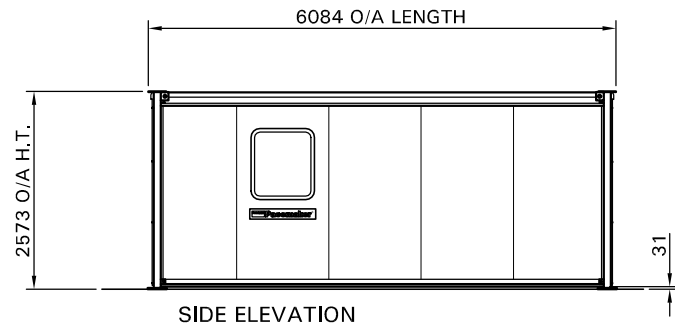
Important Building Information

All Portaloo buildings are thoroughly cleaned and tested prior to delivery. An electrical test certificate and functional plumbing test certificate are provided within the building for inspection.

The final connections from services on site into the Portaloo building should be carried out by a suitably qualified and competent professional.

The following services are excluded unless otherwise stated. A quotation is available on request:

- ▶ Foundation pads and enabling works
- ▶ On site supervision of installation and removal activities
- ▶ Final connection to services on site
- ▶ Chlorination of pipe work
- ▶ WRAS compliance - upgrade of all fittings to meet the Water Supply (Water Fitting) Regulations 1999
- ▶ Foul waste containment and mains free potable water solutions
- ▶ Access solutions
- ▶ Replenishment of consumables



FOUNDATIONS

Simple foundations or level hard standings are required to be capable of taking the foundation design load at each Lodastrut leg position of 21 kN, which includes the dead weight of the building, imposed floor load of 3 kN/m², imposed roof load of 0.75 kN/m² and wind loads based on a basic wind speed of 25 m/s (BS 6399:part 2:1997). It is recommended that professional advice is obtained for the design. Foundations shall be constructed with level tops with a tolerance of ± 3mm. The area of ground under the building, plus a surrounding 500mm, must not be higher than the foundations. All Lodastrut legs should be fully retracted onto the safety stops with the leg pins fitted through the outer legs and secured by the locking cotter. All single storey buildings are to be anchored to the foundations, unless it can be established that no climatic or other forces are likely to be applied so as to exceed the intrinsic stability of the building in its unloaded state. It is recommended that the buildings are secured via the leg base plate using M20 anchor bolts.

- KEY**
- O OPEN WINDOW
 - F FIXED WINDOW
 - RWP RAIN WATER PIPE
 - CU CONSUMER UNIT

STANDARD COLOURS

- | | |
|--|--|
| <p>External : Walls
 Door leaf

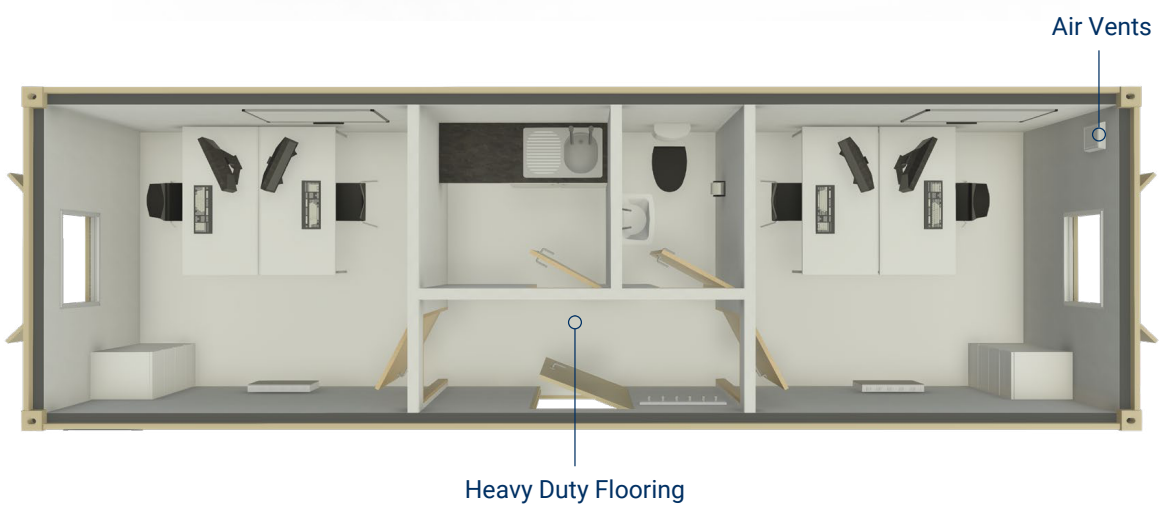
 Door Frame
 Door Furniture
 Roof
 Fascia & Corner Wall Trims
 Bottom Wall Trims
 Legs</p> | <ul style="list-style-type: none"> - Goosewing Grey nearest BS ref. 10 A 05 - UK Sales - Merlin Grey nearest BS ref. 18 B 05 - Hire & Continental Europe - Goosewing Grey nearest BS ref. 10 A 05 - Silver Anodised Aluminium. - Manhattan Grey NCS S 2502-Y RAL-DS 080 70 05. - White nearest BS ref. 00 E 55 - Goosewing Grey nearest BS ref. 10 A 05 - Goosewing Grey nearest BS ref. 10 A 05 - Grey to BS 4800 ref. 00 A 05 |
|--|--|



Portakabin Limited Huntington York YO32 9PT
 Telephone 01904 611655 Fax 01904 611644

Project	
PACEMAKER SERIES 8	
Client	
Title	
PK202 SPECIFICATION DRAWING.	
Date	Drawn
11/11/94	C. GURDEN
Scale	
1:5 & 1:50 @ A2	
Drg. No.	Rev.
BR0026	L

32ft Office & Kitchen & Toilet



Technical Specifications

General Specification	
Floor Area	27.21m ²
Cubic Capacity	60.92m ³
Max Gross Weight	6,500kg

External Dimensions	
Length	32ft (9,754mm)
Width	10ft (3,048mm)
Height	8ft (2,439mm)

Internal Dimensions	
Length	31.3ft (9,554mm)
Width	9.3ft (2,848mm)
Height	7.3ft (2,239mm)



[Click here to get a quote](#)

Available in:

- Standard
- Premium

32ft Office & Kitchen & Toilet



Range Comparison

	Standard	Premium
Unit Colour	Cream	Cream or White
Windows	Slide Open	Hinged Open
Window Glass Type	Single Glazed	Double Glazed
Heavy Duty Flooring	Black	Grey
Wall Colour	Cream	White
Safe & Secure Locking	✓	✓
Eco Features	✗	✓
Additional Insulation	✗	✗
Heaters	Standard	ECO
Electrics	✓	✓
Lighting	Standard	ECO+LED PIR Sensors
JCOP Compliant	✗	✗
Fire Rating	✗	✗

Additional Options



Office Furniture



Canteen Furniture



Washroom Consumables



Effluent Tank