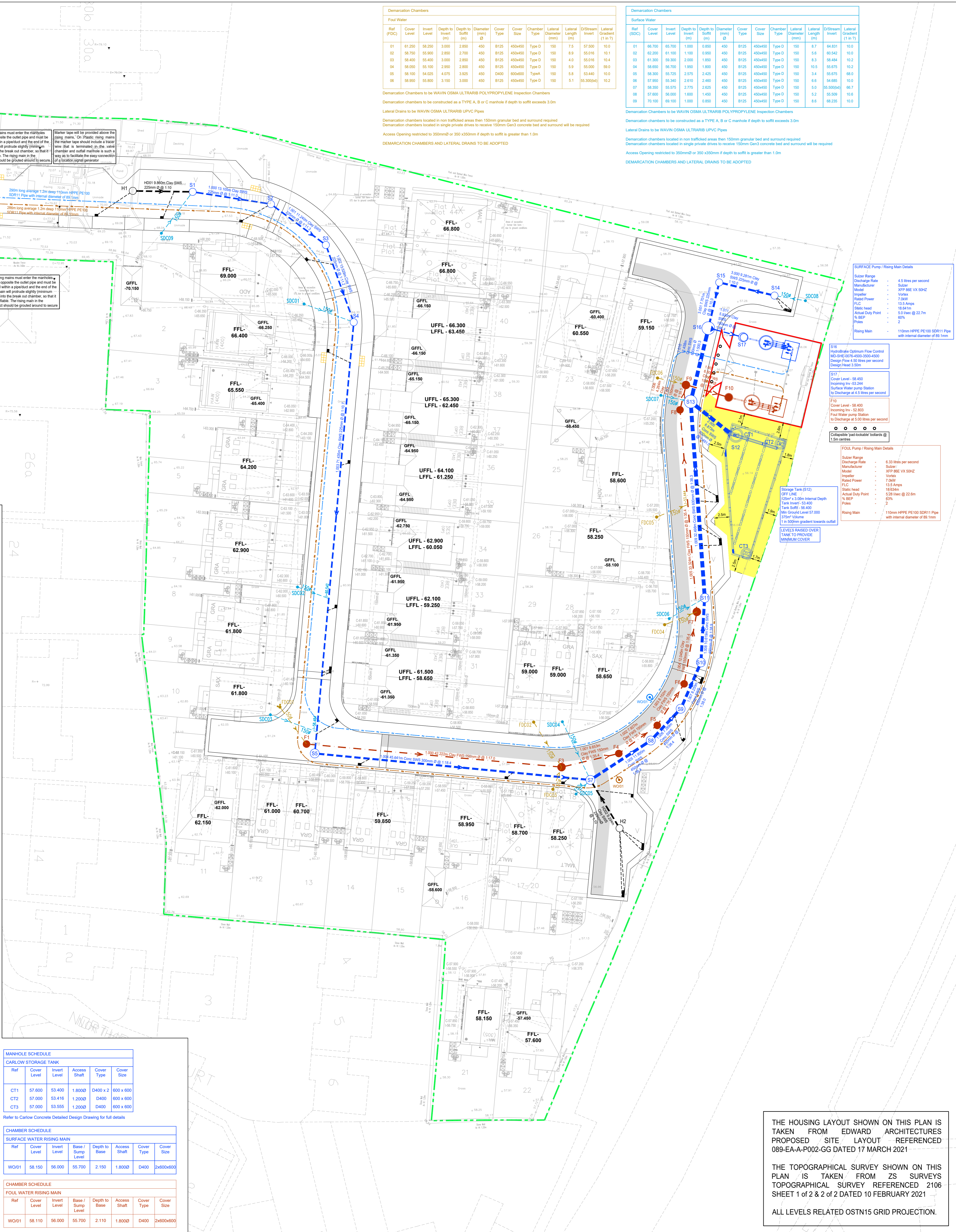


S104-2026-004

Manhole Number	Cover Level	Depth To Suffix	Connections	Pipe			Manhole Size	Types		
				Code	Inverts	Diams		Manhole	Cover	
H1										
N. 421435.908	1.200			0	H201	69.075	225	1200	Type C	D400
N. 421129.686				0						
S1										
E. 421446.717	1.200			1	1.000	66.160	225	1300	Type C	D400
N. 421130.496				0	1.000	66.160	225			
S2										
E. 421459.663	1.200			0	1.001	66.964	225	1200	Type C	D400
N. 421127.457				0	1.001	66.964	225			
S3										
E. 421468.713	1.283			1	1.002	65.568	225	1200	Type C	D400
N. 421120.790				0	1.002	65.568	225			
S4										
E. 421473.318	1.200			1	1.002	64.756	225	1300	Type C	D400
N. 421118.690				0	1.003	64.756	225			
S5										
E. 421486.845	2.250			1	1.003	58.075	225	1200	Type B	D400
N. 421038.928				0	1.004	58.000	300			
H2										
E. 421517.113	58.000			0	H202	58.464	300	1200	Type C	D400
N. 421024.663	56.750			0						
S7										
E. 421512.280	58.239			1	1.004	55.555	300	1500	Type B	D400
N. 421032.600	58.239			1	1.005	55.575	450			
S8										
E. 421522.254	57.996			1	1.005	55.065	450	1500	Type B	D400
N. 421039.090	57.996			1	1.006	54.875	450			
S9										
E. 421527.232	57.885			1	1.007	54.875	450	1500	Type B	D400
N. 421044.414	57.885			1	1.007	54.688	450			
S10										
E. 421530.523	57.885			1	1.008	54.688	450	1500	Type B	D400
N. 421051.985	57.885			1	1.009	54.385	450			
S11										
E. 421531.143	57.742			1	1.009	54.385	450	1500	Type A	D400
N. 421062.586	57.742			1	1.009	54.235	600			
S12 Tank										
E. 421532.232	57.800			0					TANK	
N. 421038.990	57.800			0						
S13										
E. 421528.645	58.189			1	1.008	53.366	600	1800	Type A	D400
N. 421084.989	42.033			0	1.010	53.366	600			
S14										
E. 421542.640	57.905			1	1.009	53.366	600	1200	Type B	D400
N. 421112.470	57.905			1	3.000	54.434	225			
S15										
E. 421533.591	58.676			1	3.001	54.506	225	1200	Type A	D400
N. 421114.631	58.676			1	3.001	53.736	225			
S16 Flow Control										
E. 421531.744	58.530			1	3.001	53.736	225	2100	New Chamber	D400
N. 421071.555	49.919			0	1.011	53.311	300			
S17 Inlet MH										
E. 421537.472	58.450			1				1200	Steel Manhole	
N. 421055.960	58.450			1						
SWW										
E. 421542.814	58.450			1				2100	Wet Well	
N. 421119.661	58.450			1						
SVC										
E. 421490.621	58.450			1				1800	Value Chamber	
N. 421113.412	58.450			1						

Manhole Number	Cover Level	Connections	Pipe Code	Inverts	Diams	Manhole Size	Manhole	Types	
F1									
N. 421465.504	60.710		0	1.000	57.500	150	1200	Type B	D400
F3									
N. 421108.531	58.321		0	1.000	56.016	100	1300	Type A	D400
F4									
E. 421516.953	58.116		1	1.001	54.743	150	1200	Type A	D400
N. 421038.990	58.116		1	1.002	54.743	150			
F5									
E. 421523.338	57.987		0	1.003	54.519	150	1200	Type A	D400
N. 421041.646	57.987		0	1.003	54.287	150			
F6									
E. 421527.760	57.879		1	1.004	53.947	150	1300	Type A	D400
N. 421048.454	57.879		1	1.004	53.147	150			
F7									
E. 421528.815	57.807		1	1.005	53.947	150	1300	Type A	D400
N. 421060.302	57.807		1	1.005	53.147	150			
F8									
E. 421527.215	58.171		0	1.006	53.006	150	1200	Type A	D400
N. 421093.525	58.171		0	1.006	52.886	150			
F9									
E. 421528.204	58.268		1	1.007	52.886	150	1300	Type A	D400
N. 421097.672	58.268		1	1.007	52.886	150			
F10 Inlet MH									
E. 421534.622	58.400		1	1.007	52.803	150	1200	Steel Manhole	
N. 421096.095	58.400		1	1.007	52.703	150			
F11									
E. 421407.048	72.915		1	1.800	70.887		1200	Type C	D400
N. 421127.792	1.528		0						
C1									
E. 421399.617	72.691		1	1.800	70.064		1200	Type B	D400
N. 421113.412	72.691		2	2.447					



Demarcation Chambers

Ref (FDC)	Cover Level	Invert Level	Depth to Invert (mm)	Depth to Suffix (mm)	Diameter (mm)	Cover Type	Chamber Type	Chamber Size	Lateral Diameter (mm)	Lateral Length (mm)	Driftstream Invert (1 in 1%)	Lateral Gradient (1 in 1%)
01	61.120	58.200	3.000	2.800	400	B125	400x400	Type D	150	7.5	57.500	10.0
02	58.750	55.900	2.850	2.700	450	B125	400x400	Type D	150	8.9	55.916	10.1
03	58.400	55.400	3.000	2.800	450	B125	400x400	Type D	150	4.0	55.916	10.1
04	58.000	55.100	2.900	2.800	450	B125	400x400	Type D	150	5.3	55.920	10.2
05	58.100	54.005	4.075	3.925	450	B125	400x400	Type D	150	5.8	53.440	10.0
06	58.900	55.900	3.000	2.900	450	B125	400x400	Type D	150	5.1	55.300x10.0	10.2

Demarcation Chambers to be installed as a TYPE A, B or C manhole if depth to suffix exceeds 3.0m

Lateral Drains to be WAWN OSMA ULTRABIR LPVC Pipes

Demarcation Chambers to be installed in non infiltrated areas then 150mm granular bed and surround required

Demarcation Chambers located in ground must be installed to receive 150mm Gully openings and surround will be required

Access Opening restricted to 300mm or 300x200mm if depth to suffix is greater than 1.5m.

DEMARICATION CHAMBERS AND LATERAL DRAIN TO BE ADOPTED

Demarcation Chambers

Ref (FDC)	Cover Level	Invert Level	Depth to Invert (mm)	Depth to Suffix (mm)	Diameter (mm)	Cover Type	Chamber Type	Chamber Size	Lateral Diameter (mm)	Lateral Length (mm)	Driftstream Invert (1 in 1%)	Lateral Gradient (1 in 1%)
01	46.700	45.700	1.000	0.800	400	B125	400x400	Type D	150	8.7	46.831	10.0
02	62.200	61.100	1.100	0.900	450	B125	400x400	Type D	150	5.6	60.542	10.0
03	61.300	59.300	2.000	1.800	450	B125	400x400	Type D	150	8.1	59.494	10.2
04	60.800	58.700	1.800	1.600	450	B125	400x400	Type D	150	3.4	55.875	10.0
05	58.300	55.725	2.575	2.425	450	B125	400x400	Type D	150	3.4	55.875	10.0
06	57.850	55.340	2.510	2.400	450	B125	400x400	Type D	150	6.6	54.985	10.0
07	58.300	55.975	2.325	2.225	450	B125	400x400	Type D	150	5.0	55.920x10.0	10.2
08	57.600	55.000	1.800	1.450	450	B125	400x400	Type D	150	5.2	55.930	10.0
09	70.100	68.100	1.000	0.850	450	B125	400x400	Type D	150	8.6	68.235	10.0

Demarcation Chambers to be installed as a TYPE A, B or C manhole if depth to suffix exceeds 3.0m

Lateral Drains to be WAWN OSMA ULTRABIR LPVC Pipes

Demarcation Chambers located in non infiltrated areas then 150mm granular bed and surround required

Demarcation Chambers located in ground must be installed to receive 150mm Gully openings and surround will be required

Access Opening restricted to 300mm or 300x200mm if depth to suffix is greater than 1.5m.

DEMARICATION CHAMBERS AND LATERAL DRAIN TO BE ADOPTED

KEY:

- Existing Surface Water Sewer and Manhole
- Existing Foul Water Sewer and Manhole
- Existing Combined Sewer and Manhole
- Proposed Surface Water Sewer and Manhole
- Proposed Surface Water Sewer and Manhole and Backdrop
- Proposed Surface Water Flow Control Manhole
- Proposed Surface Water Lateral Drain and Demarcation Chamber
- Proposed Private Surface Water Drain and Inspection Chamber (100mm Ø at 1 in 80 unless specified otherwise)
- Rainwater Down Pipe
- Roofing Eye
- ACO drainage Channel or Similar
- Proposed Foul Water Rising Main
- Proposed Foul Water Sewer and Manhole
- Proposed Foul Water Sewer and Manhole and Backdrop
- Proposed Surface Water Lateral Drain and Demarcation Chamber
- Proposed Foul Water Rising Main
- Proposed Private Foul Water Drain and Inspection Chamber (100mm Ø at 1 in 80 unless specified otherwise)
- Proposed Private Foul Water Mini Inspection Chamber
- Soil Vent Pipe or Foul Direct Connection
- Proposed Combined Water Sewer and Manhole and Backdrop
- Proposed Combined Water Sewer and Manhole and Backdrop
- Proposed Highway Drain and Manhole
- Proposed Highway Drain and Manhole and Backdrop
- Proposed Highway Gully and 150mm Ø Connection
- Proposed Easement

SOUPAGE PUMP/Rising Main Details

Motor Range: 4.5 kw per second

Discharge Size: 50mm

Manhole: 200 x 100 x 500

Flow Rate: 7.000

Head: 1.5 m

FLC: 11.5 Amps

Head: 15.0m @ 22.7m

1 to BEP: 2

Rising Main: 110mm HDPE 10.001 SDR11 Pipe with internal diameter of 89.3mm

YORKSHIRE WATER NOTES

- All adopted areas within and related to be in accordance with "Code for Adoption". The relevant British/European and Yorkshire Water Standards/Requirements and Local Practices to be adopted of Dual Sewerage Foul and Surface Water Pumping Station to be installed.
- Manhole covers shall have a clear opening of 600mm and shall be Class D400 to BS EN 124 with 150mm deep frames in highways.
- Filled ground must be filled and consolidated under the operation and to the satisfaction of Yorkshire Water before any sewer works are carried out.
- Yorkshire Water will adopt accept filter drain/drainage run-off into the public sewer network or adaptable drainage system (direct or indirect). An alternate method of disposal of the land drainage runoff will be required and you will have to liaise with the local authority. Land drainage location with regard to the disposal of the filter drain/drainage run-off.
- The adopted sewers should be a minimum of 150 and manholes 500mm from both base and service margins.
- Sewers must have a 400mm clearance from trees and hedges to the width of the canopy of mature height (lines are refer to Design and Construction Guidance for manholes on the planning subject to events).
- Sewers to be laid as Class 'B' bedding (150mm granular bed and surround). Where depth of cover to top of the sewer is less than 1.2m (highways) and greater than 0.6m (in non-visual access areas) then a concrete shaft should be provided above granular bed and surround.
- There must be enough clearance of crossings to accommodate bedding to both pipes, approx 300mm. If crossing is over the sewer then the clearance needed may be increased.
- Bedding and backfill material to conform to the requirements of Water Industry Specification 4-08-02 (Table A1).
- Adoptable plastic sewer pipes to be B1 KH material (certified to BS 4-35C and BS EN 12472). Adoptable plastic sewer pipes to be laid to maximum 300mm on 200kPa. The minimum bedding strength for concrete pipes should be: Class 12.5 EN 1196(EN12472) 200kPa. Plastic pipes should conform to BS 4-35C and BS EN 12472.
- Yorkshire Water policy is that both manholes and 1500mm dia manhole rings are not preferred. Instead it is preferred that you use a type 'B' manhole with 1200mm dia, 1200mm dia, or 1500mm dia rings, with the opening laid over the chamber then depth to cover to give 1.5m.
- Where a B125 cover and frame has been approved, this may still be used if plastic and not have lifting eye stubs sized to accommodate standard lifting keys. Screen down covers are not adopted.

B	07.04.26	Details updated in response to Yorkshire Water's comments dated 01.04.26	NS
A	09.03.25	Details updated in response to Yorkshire Water's comments dated 04.03.25	NS

Rev: Date: Description: DWH CKR APR

RYAN G HALL
CONSULTING CIVIL & TRANSPORTATION PLANNING ENGINEERS

LEDS | 0113 246 1355 LONDON | 0203 532336

Suite E15 | Josephs Walk | www.bryanghall.co.uk
Hemsworth Works | LEADS LS15 1AB | rbryanghall@bryanghall.co.uk

Client: Chartford Homes

Status: Approved

Scale: 1:250

Size: A3 - 1189 x 841 Drawn: NB Check: IE Appvd: JP

Project: Residential Development Northorpe Lane, Mirfield

Title: Proposed Drainage Layout

Drawing No: 25/76/500/001 Revision: B
Job No: 25-376 Date: 12/12/25

Copyright Reserved Bryan G Hall Ltd.

THE HOUSING LAYOUT SHOWN ON THIS PLAN IS TAKEN FROM EDWARD ARCHITECTURES PROPOSED SITE LAYOUT REFERENCED 089-EA-A-P002-GG DATED 17 MARCH 2021

THE TOPOGRAPHICAL SURVEY SHOWN ON THIS PLAN IS TAKEN FROM ZS SURVEYS TOPOGRAPHICAL SURVEY REFERENCED 2106 SHEET 1 of 2 & 2 of 2 DATED 10 FEBRUARY 2021

ALL LEVELS RELATED ODN15 GRID PROJECTION.