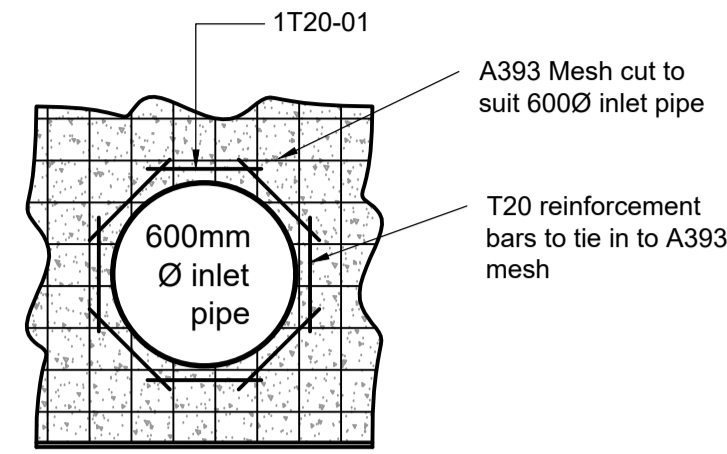


PLAN VIEW MANHOLE S16



SECTION THROUGH REINFORCEMENT TO INLET PIPE
SEE TABLE 1 FOR BAR SIZES REQUIRED

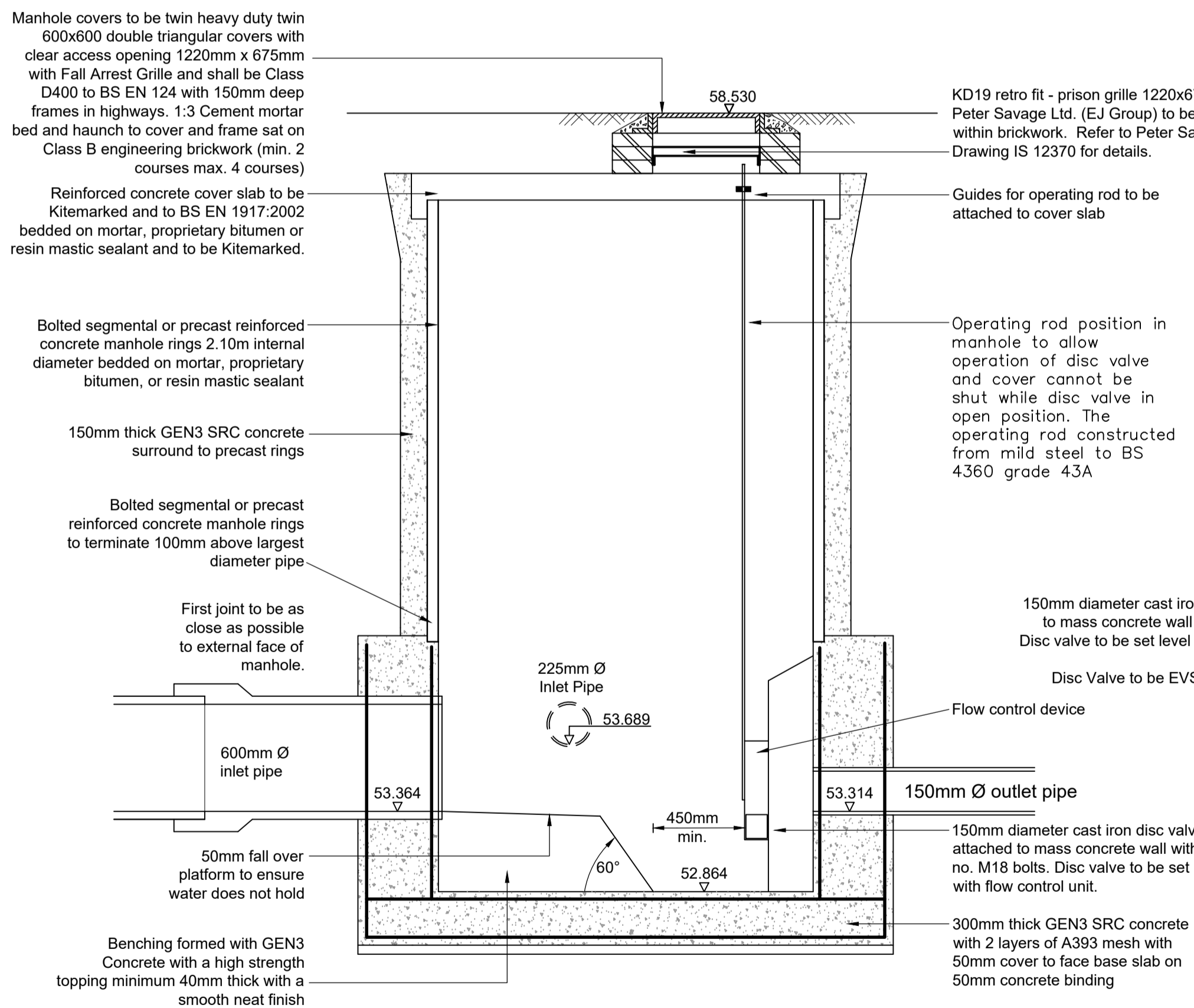
TABLE 1

PIPE SIZE	BAR SIZE
600 - 1200mm	T12
1350 - 1500mm	T16
> 1500mm	T20

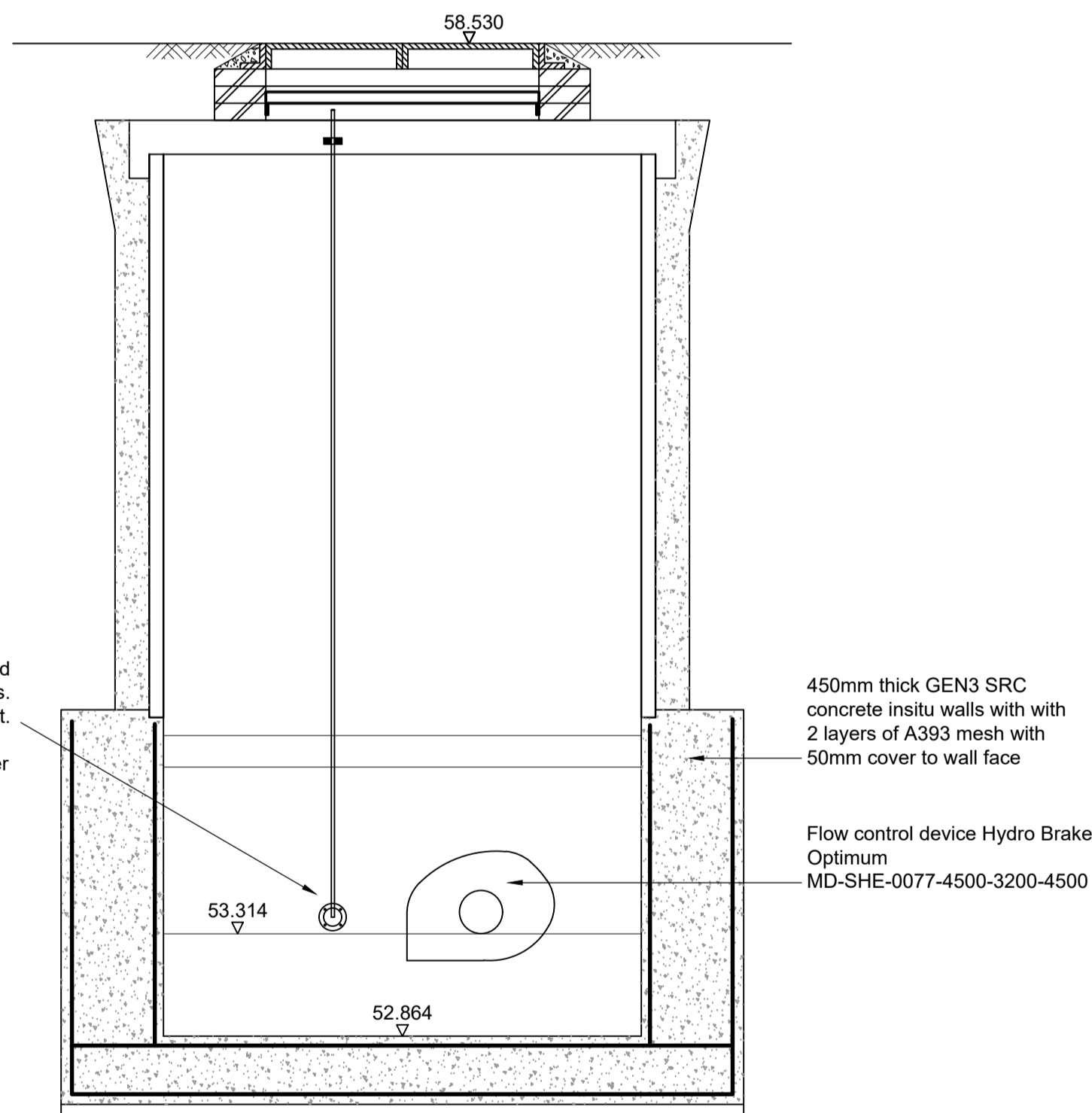
HYDROBRAKE' DETAILS					
MANHOLE	RING SIZE	COVER LEVEL	INV IN LEVEL	INV OUT LEVEL	SUMP LEVEL
S16	2100	58.530	53.689 (225Ø) 53.364 (600Ø)	53.314 (150Ø)	52.864
Unit Type	Hydro Brake Optimum MD-SHE-0076-4500-3500-4500				
Design Head	3.50m				
Design Flow	4.50 L/sec				

GENERAL NOTES

- All adoptable sewer works and material to be in accordance with Sewerage Sector Guidance Design and Construction Guidance [Code for Adoption]. The Relevant British/European and Yorkshire Water's Standards/Requirements/Local Practice for the Adoption of Small Submersible Foul and Surface Water Pumping Stations and Kitemarked.
- All custom built ironwork to be hot dipped galvanised prior to final fixing.
- All lifting eyes should be pointed once lifting is completed.



SECTION THROUGH MANHOLE S16
SECTION A-A



SECTION THROUGH MANHOLE S16
SECTION B-B

Technical Specification

The Hydro-Brake® Optimum includes:

- All in 3mm Grade 304L stainless steel
- Integral pivoting by glass door allowing clear line of sight through to outlet, 0.7m opening
- Media treated for corrosion resistance
- Variable flow rate with adjustable valve (if necessary)
- Indicative Weight: 45 kg
- Product Carbon Footprint: 48.65 kgCO₂e

Based on a 3rd party verified EPD Hydro-Brake®

Hydro-Brake® Optimum

Technical Specification

Control Point	Original Setting		Minimum Setting		Maximum Setting	
	Head (m)	Flow (l/s)	Head (m)	Flow (l/s)	Head (m)	Flow (l/s)
Primary Design	3.500	4.500	3.500	4.051	3.500	4.876
Flush-Flow™	0.330	2.638	0.403	2.168	0.304	3.021
Kick-Flow	0.680	2.115	0.676	1.890	0.679	2.304
Mean Flow		3.237		2.882		3.537

Head (m) Flow (l/s)

0.000	0.000
0.121	2.249
0.241	2.593
0.362	2.634
0.483	2.566
0.603	2.376
0.724	2.176
0.845	2.333
0.966	2.479
1.086	2.616
1.207	2.745
1.328	2.868
1.448	2.985
1.569	3.097
1.690	3.204
1.810	3.308
1.931	3.408
2.052	3.505
2.172	3.599
2.293	3.691
2.414	3.780
2.534	3.866
2.655	3.951
2.776	4.033
2.897	4.114
3.017	4.193
3.138	4.271
3.259	4.347
3.379	4.421
3.500	4.494

DESIGN ADVICE

The headflow characteristics of this SHE-0076-4500-3500-4500 Hydro-Brake® Optimum Flow Control are unique. Dynamic hydraulic modelling evaluates the full headflow characteristic curve. The use of any other flow control will invalidate any design based on this data and could constitute a flood risk.

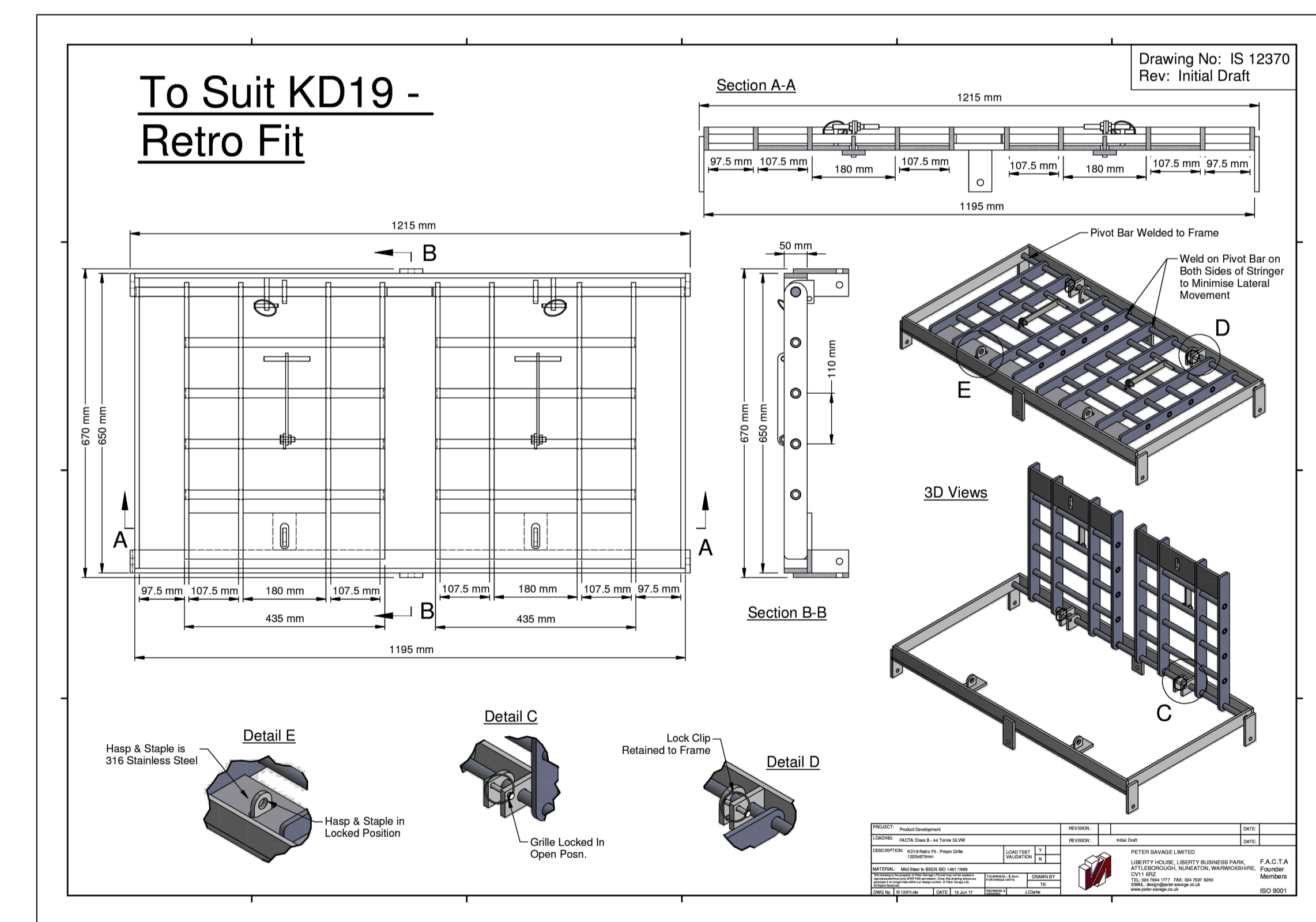
Hydro International

DESIGN ADVICE

The use of any other flow control will invalidate any design based on this data and could constitute a flood risk.

Hydro-Brake® Optimum

DATE: 15/01/2025 16:23 SHE-0076-4500-3500-4500
 SITE: Northorpe, Mirfield
 DESIGNER: Nathan Bridge
 Ref: 25-376
 Hydro-Brake® Optimum



Rev:	Date:	Amendment:	DRN	CHK

This drawing is copyright and shall not be reproduced nor used for any other purpose without the written permission of the Bryan G Hall Ltd. This drawing must be read in conjunction with all other related drawings and documentation.

It is the contractors responsibility to ensure full compliance with the Building Regulations. Do not scale from this drawing, use figured dimensions only. It is the contractors responsibility to check and verify all dimensions on site. Any discrepancies to be reported immediately. IF IN DOUBT ASK.

Materials not in conformity with relevant British or European Standards/Codes of practice or materials known to be deleterious to health & safety must not be used or specified on this project.

Status: _____ Project: _____
 Client: _____
 Chartford Homes

Residential Development
 Northorpe Lane, Mirfield

Title: Flow Control Manhole Details

Scale: 1:25
 Drawn: NB
 Checked: IE
 Drawing No: 25/376/500/005
 Revision: -
 Job No: 25-376
 Date: 12.12.25