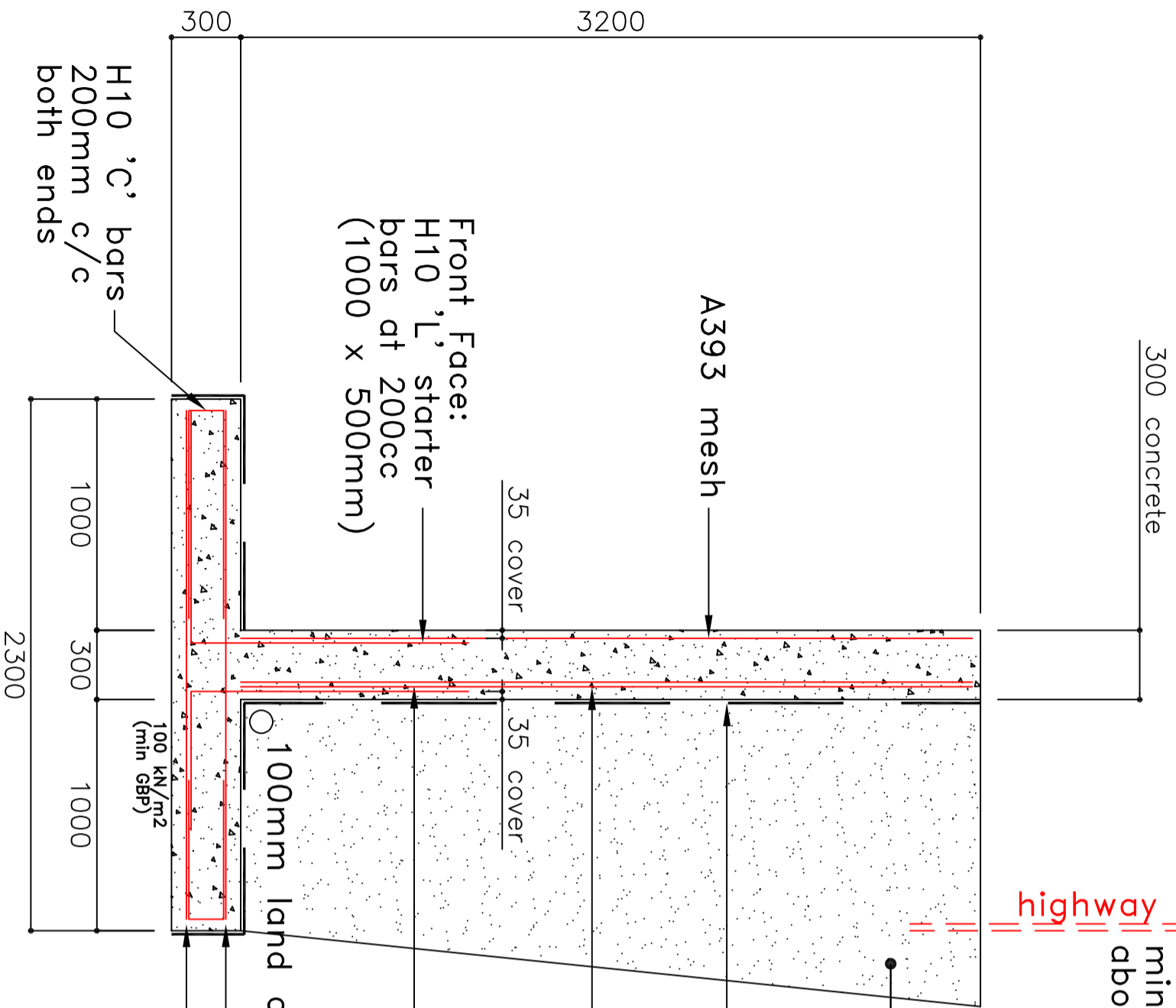


Earth behind wall battered back to maximum 45 degrees for construction



325mm unreinforced masonry parapet, or balustrade (type TBC) minimum 1100mm high above upper level

highway boundary

clean, well graded, angular, class 6N, hardcore backfill well compacted in 150mm layers

bituthene DPM

2x A393 mesh

Rear Face:  
H16 'L' starter bars @ 200mm c/c (1300mm by 600mm)

1 layer of B785 mesh  
1 layer of B785 mesh in top & bottom of base (large bars toe to heel)

Construction Notes:

1. Formation level, on a firm substrata approved by structural engineer, to be cleared of any debris, loose material prior to the concrete pour. Minimum ground bearing of GBP = 100 kN/m<sup>2</sup>.
2. Concrete grade C40/50.
3. 25mm cork/polystyrene expansion joint onto adjacent structures.
4. Construction of wall MUST be supervised by the structural engineer.
5. Hand dug trial holes to be excavated in highway to ascertain the location and the type of any utility services adjacent to the proposed mass concrete wall prior to any excavation for the new wall. Contractor is responsible for support to any services to avoid damage during construction.
6. All rebar cover 35mm UNO.
7. 100mm perforated land drain wrapped in geotextile membrane taken to a suitable outlet.
8. Rear face of wall stem, toe and heel to have bituthene DPM.

Reference Drawings & Documents:

AIP REV.01 dated 12/05/2026 (not yet approved)  
Calculations: MDL-12063-HRW-001  
Retaining Wall Site Plan: 2559-0405-P01

# CROSS SECTION

(1:25)

Rev	Date	By	Amendments
01	01.06.26	DSH	First Issue

Holroyd Homes Limited

Hinchliffe Mill, Holmfirth

Retaining Wall Cross Section

Issued for **INFORMATION ONLY**

Job Number	Dwg Number	Rev
12063	HRW-001	P01
By	Approved by	Scale
DSH	DSH	1:25 @A3