

# Arboricultural Safety Assessment

**WC-527.1a**

Land adjacent to Station Road, Slaithwaite



**Woodsage Consulting Ltd**

Unit 2, Hey End Farm, Luddendenfoot, Halifax,  
West Yorkshire HX2 6JN

T:

E: [info@woodsage.co.uk](mailto:info@woodsage.co.uk)

W: <https://woodsage.co.uk>





<b>Report type:</b>	Arboricultural Safety Assessment
<b>Report reference:</b>	WC-527.1
<b>Revision:</b>	a
<b>Client:</b>	Jess Brooke
<b>Site address</b>	Land adjacent to Station Road, Slaithwaite
<b>OS Grid Ref:</b>	SE 08073 14181
<b>Report prepared by:</b>	Jack Delaney MICFor MArborA
<b>Date:</b>	12 <sup>th</sup> May 2026

#### **Limitations of use and copyright**

© 2026 Woodsage Consulting Ltd. All rights in this report are reserved.

This document has been prepared with all reasonable skill, care, and diligence, on behalf of the client in accordance with the agreed terms of contract and/or written agreement.

The contents and format of this document are for the exclusive use of the addressee in dealing with this specific site. Woodsage Consulting Ltd does not authorise, consent, or condone any party, other than the client, relying upon the than the client, relying upon the services and information provided.



## Contents

<b>1. INTRODUCTION</b>	<b>4</b>
1.1. INSTRUCTION AND SCOPE OF REPORT	4
1.2. SITE DETAILS	4
1.3. ELEVATION AND TOPOGRAPHY	4
1.4. DESK BASED STUDY	5
<b>2. METHODS</b>	<b>6</b>
2.1. SURVEY DETAILS	6
2.2. SURVEY PERSONNEL	6
2.3. TREE INSPECTION METHODS	6
2.4. TREE RISK ASSESSMENT	7
<b>3. RESULTS AND ASSESSMENT</b>	<b>9</b>
3.1. SURVEY CONSTRAINTS	9
3.2. TARGET ZONES	9
3.3. ARBORICULTURAL OBSERVATIONS	10
3.4. SURVEY RESULTS AND ASSESSMENT	10
3.5. INDIVIDUAL TREES WITH A TOLERABLE RISK OF HARM (ROH)	11
3.6. INDIVIDUAL TREES/GROUPS OF TREES WITH A BROADLY ACCEPTABLE ROH	11
<b>4. CONCLUSION AND RECOMMENDATIONS</b>	<b>13</b>
4.1. TREE WORKS FOR RISK MITIGATION	13
4.2. TREE WORKS FOR SITE MANAGEMENT	13
4.3. TREE PROTECTION AND WILDLIFE LEGISLATION	14
4.4. DUTY OF CARE	14
<b>TABLES AND FIGURES</b>	
FIGURE 1.1: AERIAL IMAGERY SHOWING THE APPROXIMATE BOUNDARIES OF THE SITE	4
FIGURE 1.2: MAP SHOWING THE APPROXIMATE LOCATIONS OF TREE PRESERVATION ORDERS AND CONSERVATION AREAS	5
FIGURE 2.1: TOLERABILITY OF RISK FRAMEWORK	7
TABLE 3.1: BOTANICAL FAMILIES BY SPECIES AND GENERA RICHNESS	10
TABLE 3.2: SUMMARY OF TREE ROH CATEGORIES	11
TABLE 4.1: TREE WORKS SCHEDULE AND PRIORITY CATEGORIES	13
<b>APPENDICES</b>	<b>15</b>
APPENDIX 1: IMAGES OF TREES	15
APPENDIX 2: TREE SURVEY SCHEDULE	19
APPENDIX 3: TREE PLAN	25



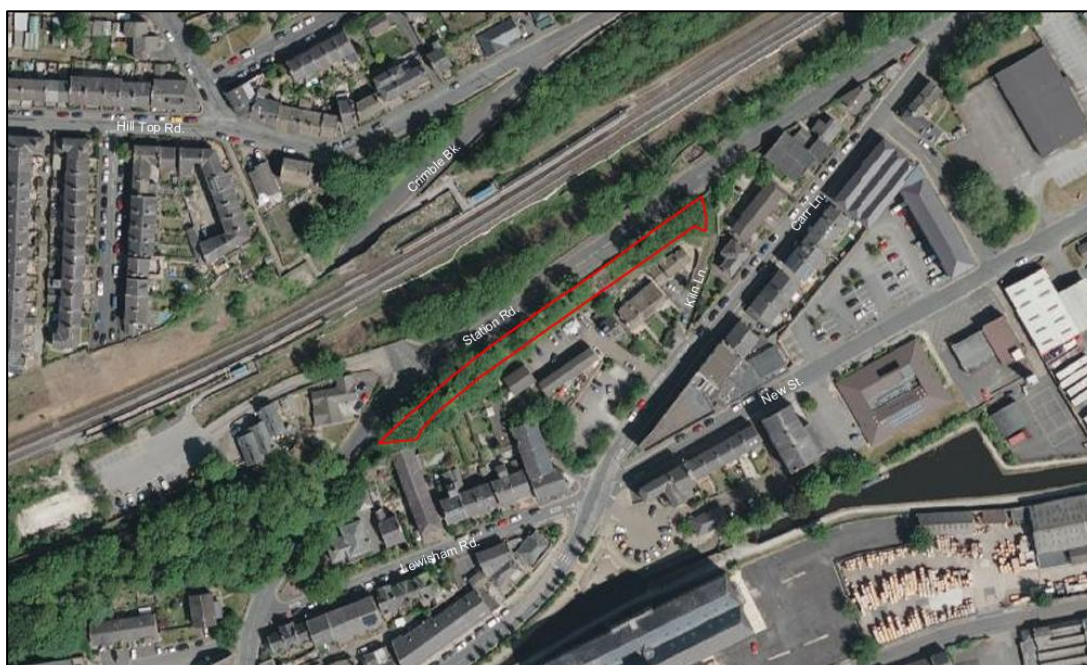
## 1. Introduction

### 1.1. Instruction and Scope of Report

- 1.1.1. Woodsage Consulting Ltd have been instructed by Jess Brooke to carry out an Arboricultural Safety Assessment of the land adjacent to Station Road, Slaithwaite.
- 1.1.2. The purpose of this report is to evaluate the structural and physiological condition of the trees at the site, in order to determine their likelihood of failure and associated risk potential.
- 1.1.3. In relation to the surrounding area, site features and usage, this report will also seek to provide informed management recommendations, with regards to the wellbeing and longevity of the trees at the site, alongside the safety of people and/or property which surround them.

### 1.2. Site Details

- 1.2.1. The site, which is shown in **Fig. 1.1**, below, is centred on OS Grid Reference SE 08073 14181 and is accessed from Kiln Lane.



**Figure 1.1:** Aerial imagery showing the approximate boundaries of the site (outlined in red)<sup>1</sup>.

- 1.2.2. The site covers approximately 0.11 ha, and is bound by Station Road to the north, by Kiln Lane to the east, and by residential gardens and driveways to the south and west.

### 1.3. Elevation and Topography

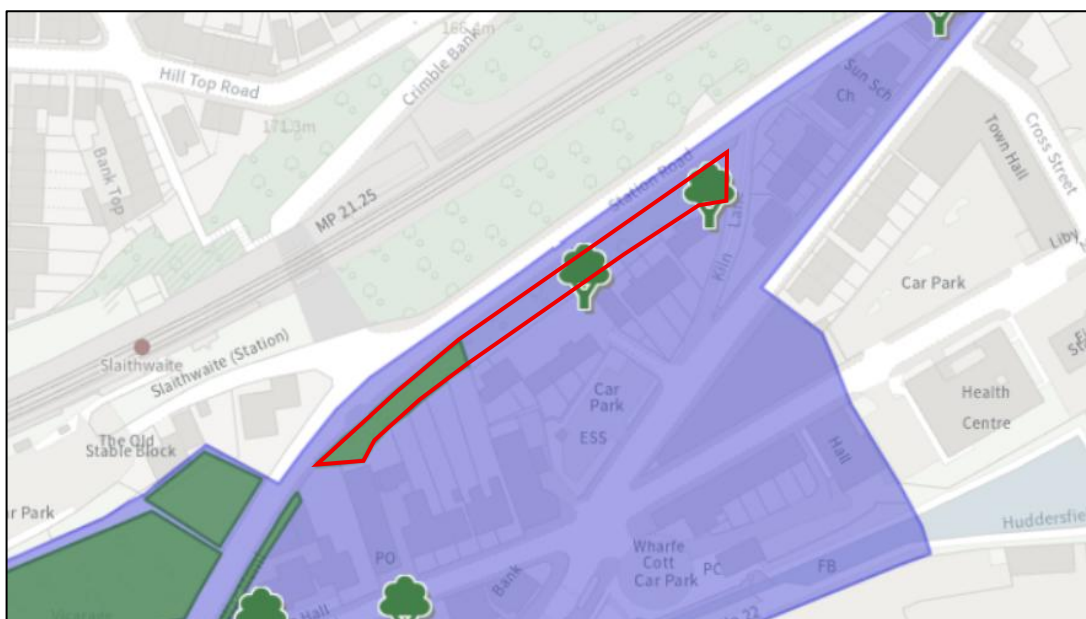
- 1.3.1. The site lies at elevation ranging between 147-153 m above ordnance datum (AOD).
- 1.3.2. The topography of the site falls away steeply from north to south.

<sup>1</sup> Microsoft Corporation (2026). *Bing Maps* [online]. Available at: <https://www.bing.com/maps?cp=53.623764%7E-1.879518&lvl=17.8&style=> (accessed 8<sup>th</sup> May 2026).



#### 1.4. Desk Based Study

- 1.4.1. According to the Cranfield Soil and Agrifood Institute<sup>2</sup>, the soils at the site are comprised of *Soilscape 6*. These are slightly acidic and loamy soils, that are freely draining. No further detailed soil analysis was carried out as part of the survey.
- 1.4.2. According to information which is available on the Kirklees Council website<sup>3</sup>, there are two individual trees and one group of trees at the site which are subject to tree preservation orders (TPO Ref: 10/80). The site is also located within the Slaithwaite Conservation Area.



**Figure 1.2:** Map showing the approximate locations of individual TPOs (tree icons), group TPOs (shaded green), and conservation areas (shaded purple)<sup>3</sup>.

- 1.4.3. Trees within conservation areas with a stem diameter exceeding 75 mm (measured at 1.5 m above ground level) may be subject to statutory protection. Where such trees are not covered by a TPO, a minimum of 6 weeks' written notice must be given to the LPA prior to undertaking any tree works.
- 1.4.4. According to information which is available on the website of the Multi-Agency Geographic Information for the Countryside (MAGIC)<sup>4</sup>, there are no ancient woodland, traditional orchard, or woodpasture and parkland priority habitats on or adjacent immediately adjacent to the site.

<sup>2</sup> Cranfield University (2026). *Land Information System (LandIS) - Soilscales Viewer* [online]. Available at: <https://www.landis.org.uk/soilscales> (accessed 8<sup>th</sup> May 2026).

<sup>3</sup> Kirklees Council (2026). *TPO/Conservation Area Map* [online]. Available at: <https://www.kirklees.gov.uk/beta/trees-listing-and-conservation/tree-preservation-orders.aspx> (accessed 8<sup>th</sup> May 2026).

<sup>4</sup> MAGIC (2026). *Magic Map* [online]. Available at: <https://magic.defra.gov.uk/MagicMap.html> (accessed 8<sup>th</sup> May 2026).



## 2. Methods

### 2.1. Survey Details

- 2.1.1. The site survey was carried out on Tuesday the 28<sup>th</sup> of April 2026.
- 2.1.2. The weather conditions at the time of the survey were fine and dry; visibility of the trees was not impeded.

### 2.2. Survey Personnel

- 2.2.1. The survey was carried out by Jack Delaney, a Chartered Arboriculturalist and Member of the Institute of Chartered Foresters, with 20 years' experience in the arboricultural sector. Jack holds a Foundation Degree (FdSc) in Arboriculture with distinction, is a Professional Member of the Arboricultural Association, a LANTRA-qualified Professional Tree Inspector, and a trained and registered user of Quantified Tree Risk Assessment (QTRA).

### 2.3. Tree Inspection Methods

- 2.3.1. The trees were inspected from ground level using the Visual Tree Assessment (VTA) methodology<sup>5</sup>.
- 2.3.2. Where necessary, trees were assessed with the aid of a metal probe, for inspection of stem cavities and areas of decay, and a nylon sounding mallet, for the purpose of detecting changes in resonance in stem wood (which may indicate dysfunction, and that further investigation is required).
- 2.3.3. Tree dimensions were determined using the following methods<sup>6</sup>:
- Tree heights were measured from the base of the main stem to the top of the crown, using an electric clinometer
  - The mean crown radius of the trees was calculated from measurements taken at each cardinal point, using a laser distometer
  - The diameters of main stems at breast height (DBH) were measured to the nearest centimetre at 1.5 m above ground level, using a diameter tape measurer
- 2.3.4. Where access to trees was obstructed or obscured, measurements have instead been estimated.
- 2.3.5. In circumstances where trees form a cohesive feature, they have been recorded, assessed and plotted as groups, hedgerows, or woodlands. The level of detail with which trees within groups, hedgerows, or woodlands have been assessed has been informed by their relationships with targets. Large trees adjacent to high value/occupancy targets will typically have undergone closer assessment than smaller trees adjacent to low value/occupancy targets. In instances where there are noteworthy trees within groups, hedgerows, or woodlands, these have been assessed and recorded individually.

---

<sup>5</sup> Mattheck, C. & Breloer, H. (1994). *The Body Language of Trees, a Handbook for Failure Analysis*. Her Majesty's Stationary, London.

<sup>6</sup> Height and crown spread have been recorded to the nearest half metre for dimensions up to 10 m, and the nearest whole metre for dimensions over 10 m



## 2.4. Tree Risk Assessment

2.4.1. Tree hazard potential was calculated using the Quantified Tree Risk Assessment (QTRA) methodology<sup>7</sup>.

2.4.2. QTRA is based upon the Tolerability of Risk framework (TOR)<sup>8</sup>, a widely accepted approach for determining whether risks are broadly acceptable, unacceptable, or tolerable.

2.4.3. Graphically represented in **Fig. 2.1**, the TOR framework comprises:

1. a Broadly Acceptable region, where the upper limit is an annual risk of death of 1 in 1,000,000;
2. an Unacceptable Region, which the lower limit is 1 in 1,000; and,
3. a Tolerable Region between these thresholds, within which the tolerability of a risk depends on the balance between the benefits of risk reduction and the costs or implications of implementing further controls

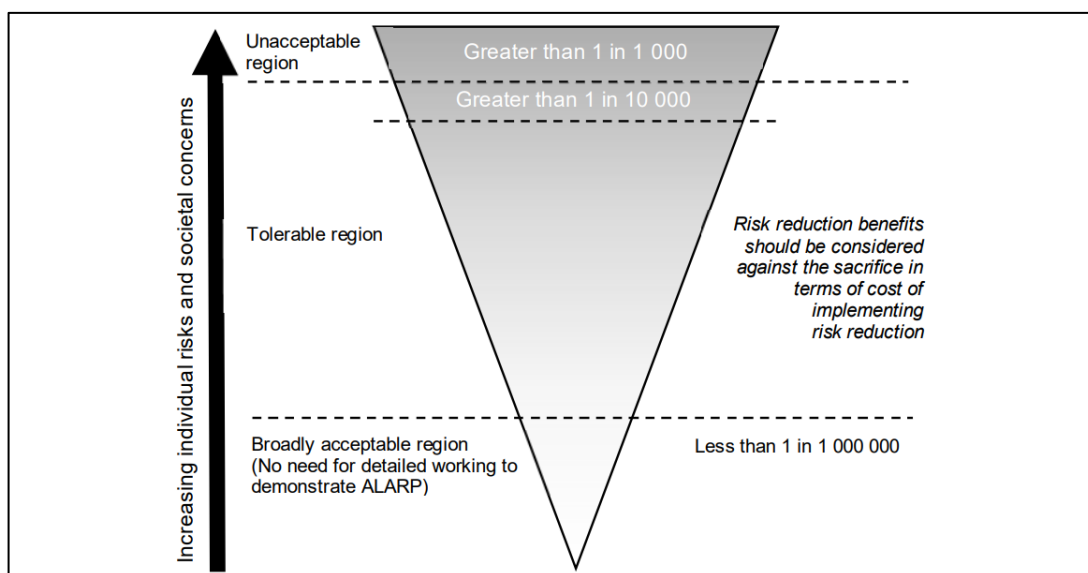


Figure 2.1: Tolerability of Risk framework<sup>7</sup>.

2.4.4. QTRA quantifies the risk of significant harm arising from tree failure, enabling tree owners and managers to balance public safety with the value and benefits if trees, while operating within the TOR framework.

2.4.5. QTRA provides a framework for the assessment of the three primary components of tree-failure, those being, target, size, and probability of failure (PoF).

2.4.6. Values assigned to target, size, and PoF are entered into a QTRA calculator which generates a traffic light colour-coded risk of harm (RoH) rating, and indicates the level of remedial action required:

- Trees with a **broadly acceptable** RoH pose a level of risk which is as low as is reasonably practicable (ALARP), and no further action is usually required
- Trees with a **tolerable** RoH may require further action, depending on who is at risk, and whether the RoH is ALARP

<sup>7</sup> QTRA (2020). *Quantified Tree Risk Assessment: User Manual* (Version 5). QTRA, Macclesfield.

<sup>8</sup> Health and Safety Executive (2001). *Reducing risks, protecting people: HSE's decision making process*. HSE Books, Sudbury.



- Trees with an **unacceptable** RoH require the risk to be controlled, usually through remedial works to the tree



### 3. Results and Assessment

#### 3.1. Survey Constraints

**3.1.1.** The survey was constrained by the season in which it took place; for example, certain pathogens and defects, in particular the fructifications of decay fungi, are only visible at specific times of the year.

**3.1.2.** A topographical plan of the site was not provided for the purpose of the survey. The trees have been plotted using a combination of land features, manual measurements, and GPS. Aerial imagery has also been utilised to plot tree group canopy spreads. Although these methods provide a good representation of the surveyed trees, it should be noted that the GPS used is not sub-metre accurate and aerial imagery may not reflect the exact current dimensions of the trees. The **Tree Plan** in **Appendix 3** therefore only shows the approximate locations and dimensions of the trees.

**3.1.3.** There are trees at the site which:

- are situated within dense areas of understorey vegetation;
- have dense adventitious growth on the main stems; and/or,
- have epiphytic plants established upon them.

Whilst such trees were surveyed insofar as was reasonably practicable, defects may be present which could not be observed in detail.

**3.1.4.** All visual observations and recommendations relate to the condition of the trees and surroundings at the time of the survey. Any subsequent changes to landform or site conditions within the vicinity of trees could invalidate the advice provided.

**3.1.5.** The observations made within this document are valid only under typical weather conditions. The majority of tree failures are associated with structural defects and/or declining physiological condition, often in combination with unusual or extreme weather events. Every effort has been made to identify defects within the trees and the risks these may pose; however, even healthy trees or parts of healthy trees which appear free from defects may fail at any time. Consequently, the outcomes of such events cannot always be predicted.

#### 3.2. Target Zones

**3.2.1.** In the event of failure, the trees at the site have potential to impact the targets listed below.

**Human:**

- Public footpaths:  
Average estimated traffic of 2 – 7 pedestrian/cyclists per hour, classified as QTRA **Target Zone 3**.
- Residential gardens:  
Estimated occupancy beneath trees between 2 minutes per week – 14 minutes per day, classified as QTRA **Target Zone 3 or 4**.

**Property:**

- Parked vehicles, residential properties, and street infrastructure/furniture:  
Potential damage values in the region of £20 – £200,000, classified as QTRA **Target Zone 2, 3, 4, or 5**, dependent on tree or tree-part size.



**Vehicle:**

- Station Road:  
Estimated average annual traffic flow of 48 – 470 vehicles per day, travelling at an average speed of less than 32 mph, classified as QTRA **Target Zone 3**.

**3.2.2.** For a more detailed explanation of target zones, refer to the QTRA User Manual<sup>7</sup>.

**3.3. Arboricultural Observations**

**3.3.1.** A total of 10 individual trees and four groups of trees were recorded during the survey.

**3.3.2.** The surveyed trees comprise a total of eight species, eight genera, and six families.

**Table 3.1:** Botanical families by species and genera richness.

Family	No. of Species	No. of Genera
<i>Rosaceae</i>	2	2
<i>Oleaceae</i>	2	2
<i>Salicaceae</i>	1	1
<i>Fagaceae</i>	1	1
<i>Sapindaceae</i>	1	1
<i>Aquifoliaceae</i>	1	1

**3.3.3.** **Tab. 3.1**, above, demonstrates that there is a moderate diversity in terms of the range of the botanical families, genera and species at the site.

**3.3.4.** Tree stock diversity is ecologically important and helps to:

- protect against pest and disease outbreak;
- provide greater climate change resilience;
- increase biodiversity, by supporting a wider variety of insects, bird, fungi, and mammals; and,
- implement structural stability by providing a continuous canopy over time.

**3.3.5.** The tree species recorded at the site include sycamore *Acer pseudoplatanus*, common hawthorn *Crataegus monogyna*, common ash *Fraxinus excelsior*, common holly *Ilex aquifolium*, wild privet *Ligustrum vulgare*, sessile oak *Quercus petraea*, goat willow *Salix caprea*, and common whitebeam *Sorbus aria*.

**3.4. Survey Results and Assessment**

**3.4.1.** Taking account of the target zones, size of the trees, and their probability of failure:

- Three individual trees and four groups of trees have been determined to present a broadly acceptable RoH of less than 1/1,000,000
- Seven individual trees have been determined to present a tolerable RoH of between 1/10,000 and 1/1,000,000
- None of the trees have been determined to present an unacceptable RoH (when imposed on other) of between 1/1,000 and 1/10,000, or an unacceptable RoH of more than 1/1,000

**3.4.2.** **Tab. 3.2**, on the next page, gives a summary of the trees at the site and their associated RoH.



**Table 3.2:** Summary of tree RoH categories.

RoH	Tree/Group Ref.	Line Totals
Broadly Acceptable	T003, T005, T009	4 Trees
	G001, G002, G003, G004	4 Groups
Tolerable	T001, T002, T004, T006, T007, T008, T010	6 Trees
Unacceptable	-	-
<b>Totals:</b>		<b>10 Trees 4 Groups</b>

**3.4.3.** The **Tree Survey Schedule**, which can be viewed in **Appendix 2**, details the full results of the survey. The approximate locations of the trees can be viewed in the **Tree Plan** in **Appendix 3**.

**3.4.4.** There are additional small trees and shrubs at the site, however, due to their relatively small size and/or distance from targets, these were not included in the survey.

### **3.5. Individual Trees with a Tolerable Risk of Harm (RoH)**

**3.5.1.** T001 and T007 are both moribund trees which have been determined to present a RoH of 1/500,000.

**3.5.2.** T002 is a mature sycamore, which displays brittle cinder fungus *Kretzschmaria deusta* fructifications at the base of the main stem. In the early stages of colonisation, brittle cinder fungus can cause a soft rot in the lower main stem and principal roots by preferentially destroying cellulose, which can lead to sudden brittle fracture. T002 has therefore been given a PoF value of 4<sup>9</sup> and has been determined to present a RoH of 1/30,000.

**3.5.3.** T004, T006, and T008 comprise early-mature common ash, all of which display deadwood within the crowns exceeding 100 mm in diameter. These trees have therefore been determined to present a RoH of 1/300,000.

**3.5.4.** T010 is a semi-mature common whitebeam which displays a southern bracket *Ganoderma australe* fructification on the west aspect of the stem. southern bracket is a fungal pathogen, which in the early stages of colonisation causes a localised selective delignification. In very advanced stages of decay the lignin can be almost completely degraded, which can instigate ductile fracture. T010 has therefore been given a PoF value of 4 and has been determined to present a RoH of 1/300,000.

**3.5.5.** The RoH posed by T001, T002, T004, T006, T007, T008, and T010, which are all between 1/1,000,000 and 1/10,000, is considered tolerable in situations where the risk is imposed on others, providing that the RoH is ALARP.

### **3.6. Individual Trees/Groups of Trees with a Broadly Acceptable RoH**

**3.6.1.** G001 includes several common ash, which display deadwood around the crown extremities and adventitious shoots on structural branches. These are features that are symptomatic of Chalara ash dieback *Hymenoscyphus fraxineus*. The initial hazard posed by trees that are infected by Chalara ash dieback are these dead or dying branches which can become brittle and fall. Chalara ash dieback can result in the death of mature trees, as sources for food and nutrition are gradually diminished; however, external factors such as the climate, topography, soil type, and local tree cover appear to play important roles in the extent and

<sup>9</sup> A PoF value of 4 is applied when the PoF of a tree cannot be accurately determined.



rate to which trees are affected. At present, the dead and dying branches pose the principal threat and these have been determined to present a RoH of less than 1/1,000,000.

- 3.6.2.** All of the remaining trees at the site have been determined to present a broadly acceptable RoH of less than 1/1,000,000.



## 4. Conclusion and Recommendations

### 4.1. Tree Works for Risk Mitigation

- 4.1.1. To eliminate the RoH which is posed by T001 and T007 it is recommended that these trees are removed.
- 4.1.2. To determine the extent of the decay within the lower main stems and principal roots of T002 and T010, it is recommended that further decay analysis is carried out using a resistance micro drill or sonic tomograph. Alternatively, the RoH which is posed by T002 and T010 could be eliminated by removing the trees.
- 4.1.3. To reduce the RoH posed by T004, T006, and T008 down to a broadly acceptable level, it is recommended that all deadwood within the crowns exceeding 50 mm in diameter is removed.
- 4.1.4. Since all of the remaining trees have been determined to present a broadly acceptable RoH, no further risk mitigation works are recommended.

### 4.2. Tree Works for Site Management

- 4.2.1. Unrelated to risk mitigation and at the discretion of the landowner, it is suggested that the low priority works which are summarised in **Tab. 4.1**, below, are undertaken in the interests of site management.

**Table 4.1:** Tree works schedule and priority categories.

Tree/Group Ref.	Management Recommendations	Priority Category
T001	<ul style="list-style-type: none"> <li>• Remove the tree</li> </ul>	Moderate
T002	<ul style="list-style-type: none"> <li>• Carry out further decay analysis using a resistance micro drill or sonic tomograph <u>or</u></li> <li>• Remove the tree</li> </ul>	
T004	<ul style="list-style-type: none"> <li>• Remove deadwood &gt; 50 mm in diameter</li> </ul>	
T006		
T007	<ul style="list-style-type: none"> <li>• Remove the tree</li> </ul>	
T008	<ul style="list-style-type: none"> <li>• Remove deadwood &gt; 50 mm in diameter</li> </ul>	
T010	<ul style="list-style-type: none"> <li>• Carry out further decay analysis using a resistance micro drill or sonic tomograph <u>or</u></li> <li>• Remove the tree</li> </ul>	
T003	<ul style="list-style-type: none"> <li>• Remove the tree</li> </ul>	Low
T005	<ul style="list-style-type: none"> <li>• Remove the tree</li> </ul>	
T009	<ul style="list-style-type: none"> <li>• Reduce or remove 2 x leaning co-dominant stems for clearance to adjacent property</li> </ul>	
G001	<ul style="list-style-type: none"> <li>• Carry out inspection of ash for symptoms of Chalara ash dieback when next in full leaf (August 2026)</li> </ul>	
G002	<ul style="list-style-type: none"> <li>• Sever ivy at the bases of affected trees to facilitate future inspections</li> </ul>	
G003		
G004	<ul style="list-style-type: none"> <li>• Remove the group</li> </ul>	



#### 4.3. Tree Protection and Wildlife Legislation

- 4.3.1.** According to information available on the website of Kirklees Council<sup>3</sup>, T002, T004, T005, T006, T007, T008, T009, T010, G002, G003, and G004 are subject to TPOs. Although T001 and G001 are not subject to TPOs they are located within the Slaithwaite Conservation Area. A Works to Protected Trees Application should therefore be submitted to and approved by Kirklees Council, by the landowner or the assigned arboricultural contractor, prior to the commencement of works<sup>10</sup>. It is an offence to carry out works to a protected tree without consent, and such actions may result in enforcement action and prosecution.
- 4.3.2.** All tree works should be carried out by a suitably qualified and fully insured arboricultural contractor who is able to comply with *BS 3998: 2010*<sup>11</sup>.
- 4.3.3.** Trees provide valuable habitat for wild birds, bats, and many other forms of wildlife. The risks posed to these should be suitably assessed before the recommendations within this report are completed.
- 4.3.4.** Under the *Conservation of Habitats and Species (Amendment) (EU Exit) Regulations 2019* and the *Wildlife and Countryside Act 1981 (as amended)*:
- it is an offence to intentionally or recklessly disturb any wild bird listed on Schedule 1 while it is nest building, or in, on or near a nest containing eggs or young, or to disturb the dependent young of such a bird; and
  - it is an offence to deliberately damage or destroy a bat roost (breeding site or resting place), even if the roost is not occupied at the time.

#### 4.4. Duty of Care

- 4.4.1.** Under the *Occupiers' Liability Acts (1957 and 1984)*, landowners and occupiers have a duty of care to take reasonable steps to ensure that trees on their land do not pose a foreseeable risk of harm to people or property.
- 4.4.2.** In order to discharge this duty of care, trees should be inspected at appropriate intervals and following significant events which may cause sudden change, such as severe storms.
- 4.4.3.** Providing the recommendations specified within this report are implemented, and follow-up inspections are carried out within the proposed time frame, the level of foreseeable risk to people and property at the site will be reduced to an acceptable level.
- 4.4.4.** The results of this survey are considered valid for a period of 18 months. It is therefore recommended that an update assessment is carried out before December 2027.

---

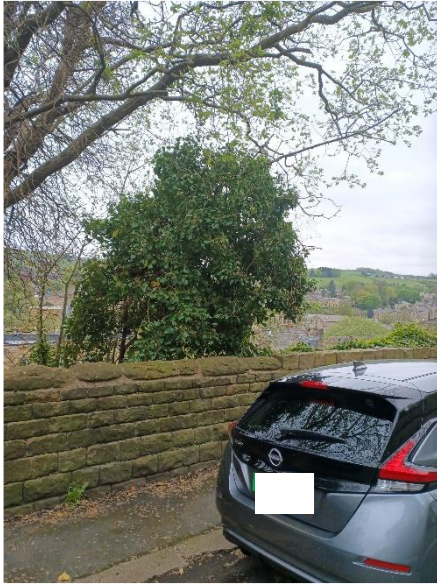
<sup>10</sup> Note, however, that the removal of ivy and deadwood from trees that are subject to TPOs does not usually require LPA consent.

<sup>11</sup> British Standards (2010). *BS 3998: 2010 - Tree Work: Recommendations*. British Standards Institute, London.

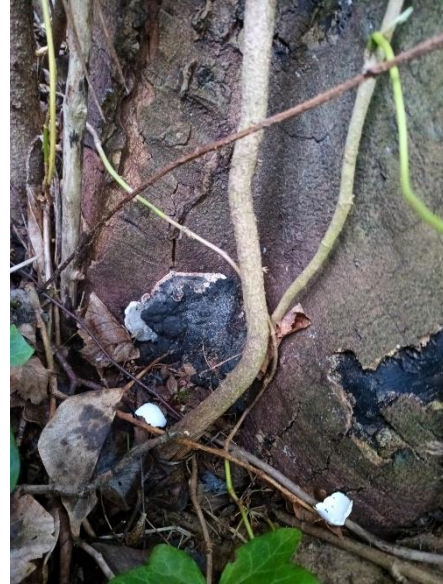


## Appendices

### Appendix 1: Images of Trees



**Plate 1:** T001



**Plate 2:** *K. deusta* fructifications at the base of T002



**Plate 3:** T002



**Plate 4:** T003



**Plate 5:** T004 (left) & T005 (right)



**Plate 6:** T006



**Plate 7:** T007



**Plate 8:** T008



**Plate 9:** Branches from T009 which encroach onto an adjacent property



**Plate 10:** *G. australe* fructification at the base of T010



**Plate 11:** G001



**Plate 12:** Ash within G001 displaying preliminary symptoms of *Chalara ash dieback*



***Plate 13: G002***



***Plate 14: G003***



***Plate 15: G004***



## Appendix 2: Tree Survey Schedule

Table Key			
<b>Tree/Group Ref:</b>	Reference numbers, as shown in the <b>Tree Plan</b> in <b>Appendix 3</b>	<b>DBH:</b> Diameter at breast height (1.5 m), in centimetres	
<b>Height (H):</b>	Height of the tree, from the base of the main stem to the top of the crown, in metres	<b>Target Type:</b> V = Vehicle on Highway; H = Human; P = Property	
<b>Crown Spread (CS):</b>	Mean crown radius, in metres	<b>SULE:</b> Safe useful life expectancy (SULE) of the tree, in years	
<b>Mass:</b>	The percentage mass of a tree or branch can alter according to its physiological condition, and has been estimated accordingly	<b>Physiological Condition (PC):</b> A measure of the physiological condition of the tree. G = Good; F = Fair; P = Poor; D = Dead	
<b>Species:</b>	Common (and <i>binomial name</i> )		
<b>Age</b>	<b>Young (Y):</b> Young sapling/newly planted tree <b>Semi-mature (SM):</b> Trees in first third of SULE for the species type <b>Early-mature (EM):</b> Trees in second third of SULE for the species type <b>Mature (M):</b> Trees in final third of SULE for the species type	<b>Over-mature (OM):</b> Trees that have exceeded the usual life span for the species type <b>Veteran (V):</b> Trees of any age which display veteran characteristics <b>Ancient (A):</b> Trees which are remarkably old for the species type	
Priority Categories			
<b>N/A:</b> Tree risk of harm (RoH) is broadly acceptable or as low as reasonably practicable (ALARP), and therefore no further works are prescribed		<b>High:</b> Dangerous trees that require planning and/or consultation; works to be completed within 4 weeks of inspection	
<b>Urgent:</b> Emergency situations where imminent failure is likely; works to be completed soon as reasonably practicable		<b>Moderate:</b> Trees noted as hazardous; works to be completed within 20 weeks of inspection	
		<b>Low:</b> Recommendations to be completed for long-term management purposes and at the discretion of the landowner	
Quantified Tree Risk Assessment Calculations			
Target Zone	(H = Human; V = Vehicle; P = Property)	Size	Probability of Failure (PoF)
<b>Target 2:</b>	<ul style="list-style-type: none"> <li>Potential to cause £20,000 – £200,000 in damage to property</li> </ul>	<b>Size 1:</b> > 450 mm DBH <b>Size 2:</b> 450-260 mm DBH <b>Size 3:</b> 250-110 mm DBH <b>Size 4:</b> 100-25 mm DBH <b>Size P:</b> Used to calculate damage to property	<b>1:</b> 1/1 - > 1/10 <b>2:</b> 1/10 - > 1/100 <b>3:</b> 1/100 - > 1/1K <b>4:</b> 1/1K - > 1/10K <b>5:</b> 1/10K - > 1/100K <b>6:</b> 1/100K - 1/1M <b>7:</b> < 1/1M
<b>Target 3:</b>	<ul style="list-style-type: none"> <li>Average estimated traffic of 2 – 7 pedestrians/cyclist p/hr</li> <li>Average estimated occupancy of 2 – 14 mins p/day</li> <li>Potential to cause £2,000 – £20,000 in damage to property</li> <li>Average estimated annual traffic flow of 48 – 470 vehicles p/day</li> </ul>		
<b>Target 4:</b>	<ul style="list-style-type: none"> <li>Average estimated traffic of 3 pedestrians/cyclist p/day – 1 p/hr</li> <li>Average estimated occupancy of 2 mins p/week – 1 min p/day</li> <li>Potential to cause £200 – £2,000 in damage to property</li> </ul>		
<b>Target 5:</b>	<ul style="list-style-type: none"> <li>Potential to cause £20 – £200 in damage to property</li> </ul>		
Risk of Harm (RoH)	RoH (as Fraction)	Action	
<b>Broadly Acceptable (BA):</b>	< 1/1M	The RoH is ALARP: no further remedial action is required	
<b>Tolerable (T):</b>	1/10K – 1/1M	Remedial action may be required if the RoH is not ALARP	
	1/1K – 1/10K (when not imposed on others)		
<b>Unacceptable (U):</b>	> 1/1K	Remedial action is required to reduce or remove the RoH	
	1/K - 1/10K (when imposed on others)		



Individual Trees

Tree Ref:	Species	A	SULE	H	CS	DBH	PC	Comments	Area of Tree Risk Assessed	Target Description	QTRA Factors					Management	Priority Category
											Target Type /Zone	Size	Mass	PoF	RoH		
T001	Goat willow <i>Salix caprea</i>	SM	< 5	6	2.5	22	P	Moribund tree. Dense ivy <i>Hedera helix</i> established throughout the crown, which obscures tree features and potential defects.	Main stem/root plate failure	Parked vehicles	H3	3	100 %	3	1/500K (T)	Remove tree	Moderate
T002	Sycamore <i>Acer pseudoplatanus</i>	EM	5-10	16	6	64	F	Bifurcates between 0-2 m into multiple co-dominant stems; the angles of these branch unions are all < 25°, and therefore, these potentially may contain included bark. Brittle cinder fungus <i>Kretzschmaria deusta</i> fructifications apparent at the base of the main stem. Necrotic bark on several first order branches between 2-4 m with jelly ear fungus <i>Auricularia auricula-judae</i> apparent on the exposed dysfunctional sapwood. Major deadwood > 100 mm in diameter scattered throughout the crown.	Main stem/root plate failure	Parked vehicles	P2	P	100 %	4	1/30K (T)	Carry out further assessment of decay in main stem using resistance micro drill or sonic tomograph, or remove the tree	Moderate
T003	Sycamore <i>Acer pseudoplatanus</i>	D	< 5	6.5	2	10 9 8	D	Dead tree.	Main stem/root plate failure	Parked vehicles	H3	4	100 %	3	< 1/1M (BA)	Remove tree	Low
T004	Common ash <i>Fraxinus excelsior</i>	EM	40-80	18	6	43	F	Asymmetrical form due to proximity with adjacent trees. Dense ivy <i>Hedera helix</i> established throughout the crown, which obscures tree features and potential defects. Major deadwood > 100 mm in	Deadwood	Public footpath	H3	3	100 %	3	1/500K (T)	<ul style="list-style-type: none"> <li>Remove deadwood &gt; 50 mm in diameter</li> </ul>	Moderate



Tree Ref:	Species	A	SULE	H	CS	DBH	PC	Comments	Area of Tree Risk Assessed	Target Description	QTRA Factors				Management	Priority Category	
											Target Type /Zone	Size	Mass	PoF			RoH
								diameter scattered throughout the crown. Branches extending north are entangled in adjacent telephone cables.							<ul style="list-style-type: none"> <li>Sever ivy at the base of the main stem to facilitate future inspections</li> <li>Crown lift/reduce branches extending north to clear telephone cables</li> </ul>	Low	
T005	Common ash <i>Fraxinus excelsior</i>	SM	10-20	7.5	3	17	F	Suppressed tree with asymmetrical form and leaning main stem in result.	Main stem/root plate failure	Parked vehicles	H3	3	100%	5	< 1/1M (BA)	Remove tree	Low
T006	Common ash <i>Fraxinus excelsior</i>	EM	40-80	19	6	41	F	Asymmetrical form and leaning main stem due to proximity with adjacent trees. The main stem is in contact with the boundary wall. Major deadwood > 100 mm in diameter scattered throughout the crown. Dense ivy <i>Hedera helix</i> established throughout the crown, which obscures tree features and potential defects.	Deadwood	Parked vehicles	P4	P	100%	3	1/300K (T)	Remove deadwood > 50 mm in diameter	Moderate
																Sever ivy at the base of the main stem to facilitate future inspections	Low
T007	Sycamore <i>Acer pseudoplatanus</i>	D	< 5	11	1	32	D	Dead tree. Dense ivy <i>Hedera helix</i> established on main stem, which obscures tree features and potential defects.	Main stem/root plate failure	Parked vehicles	P3	P	100%	3	1/30K (T)	Remove tree	Moderate



Tree Ref:	Species	A	SULE	H	CS	DBH	PC	Comments	Area of Tree Risk Assessed	Target Description	QTRA Factors					Management	Priority Category
											Target Type /Zone	Size	Mass	PoF	RoH		
T008	Common ash <i>Fraxinus excelsior</i>	EM	40-80	17	6	44	F	Minor deadwood < 100 mm in diameter scattered throughout the crown. Dense ivy <i>Hedera helix</i> established throughout the crown, which obscures tree features and potential defects.	Deadwood	Parked vehicles	P4	P	100 %	3	1/300K (T)	Remove deadwood > 50 mm in diameter	Moderate
																Sever ivy at the base of the main stem to facilitate future inspections	Low
T009	Sycamore <i>Acer pseudoplatanus</i>	EM	40-80	19	7	39	F	Bifurcates between 0-2 m into multiple co-dominant stems; the angles of some of these branch unions are < 25°, and therefore, these potentially may contain included bark. Dense ivy <i>Hedera helix</i> established on the main stem and first order branches, which obscures tree features and potential defects. Two co-dominant stems lean heavily to the south-east and encroach onto the roof of an adjacent property.	Acute branch unions	Residential garden	H3	2	100 %	6	< 1/1M (BA)	Reduce or remove 2 x leaning co-dominant stems for clearance to adjacent property	Low
T010	Common whitebeam <i>Sorbus aria</i>	SM	10-20	13	3	27 23	F	Bifurcates at ground level into two co-dominant stems. Southern bracket <i>Ganoderma australe</i> fructification apparent at the base of one co-dominant stem. Minor deadwood < 100 mm in diameter scattered throughout the crown.	Main stem/root plate failure	Parked vehicles	P3	P	100 %	4	1/300K (T)	Carry out further assessment of decay in main stem using resistance micro drill or sonic tomograph, or remove the tree	Moderate



Groups of Trees

Group Ref:	Species	A	SULE	Mx. H	Mx. DBH	V	Comments	Area of Tree Risk Assessed	Target Description	QTRA Factors					Management	Priority Category
										Target	Size	Mass	PoF	RoH		
G001	Sycamore <i>Acer pseudoplatanus</i> Common hawthorn <i>Crataegus monogyna</i> Common ash <i>Fraxinus excelsior</i> Common holly <i>Ilex aquifolium</i> Wild privet <i>Ligustrum vulgare</i> Goat willow <i>Salix caprea</i>	SM EM	40-80	16	42	F	Group containing semi-mature and early-mature sycamore, ash, and goat willow, with wild privet, hawthorn, and holly understorey. Multiple specimens display acute branch unions, asymmetrical forms, and branch tear-out wounds, though none of these features result in a PoF of > 1/10K. Minor deadwood and hanging branches < 100 mm in diameter scattered throughout the group, though these are positioned above low-occupancy targets (woodland). Ivy <i>Hedera helix</i> established throughout the group, though this has been severed at the bases of most of the affected trees. Several early-mature ash display deadwood around the extremities of the crowns, which may indicate the early stages of Chalara ash dieback <i>Hymenoscyphus fraxineus</i> .	Acute branch unions	Parked vehicles	P2	P	100 %	6	< 1/1M (BA)	Carry out inspection of ash for symptoms of Chalara ash dieback when next in full leaf (August 2026)	N/A
G002	Sycamore <i>Acer pseudoplatanus</i> Common hawthorn <i>Crataegus monogyna</i> Common ash <i>Fraxinus excelsior</i> Sessile oak <i>Quercus petraea</i> Common whitebeam <i>Sorbus aria</i>	EM	40-80	16	43	F	Group containing semi-mature and early-mature sycamore, ash, oak, and whitebeam, with an understorey comprising sapling sycamore, whitebeam, and hawthorn. Multiple specimens display acute branch unions, asymmetrical forms, and branch tear-out wounds, though none of these features result in a PoF of > 1/10K. Minor deadwood and hanging branches < 100 mm in diameter scattered throughout the group, though these are positioned above low-occupancy targets (woodland). Dense ivy <i>Hedera helix</i> established throughout the group, which obscures tree features and potential defects.	Acute branch unions	Parked vehicles	P2	P	100 %	6	< 1/1M (BA)	Sever ivy at bases of affected trees to facilitate future inspections	Low

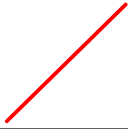
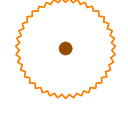
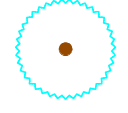
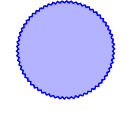
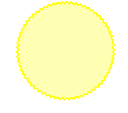


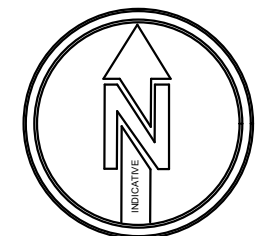
Group Ref:	Species	A	SULE	Mx. H	Mx. DBH	V	Comments	Area of Tree Risk Assessed	Target Description	QTRA Factors					Management	Priority Category
										Target	Size	Mass	PoF	RoH		
G003	Sycamore <i>Acer pseudoplatanus</i> Common ash <i>Fraxinus excelsior</i>	M	40-80	18	62	F	Group comprising semi-mature, early-mature, and mature sycamore and ash. Multiple specimens display acute branch unions, asymmetrical forms/leaning main stems, branch cavities, and branch tear-out wounds, though none of these features result in a PoF of > 1/10K. Standing dead trees and deadwood within the crowns of living trees, some of which exceed 100 mm in diameter, though these are positioned above or adjacent to low-occupancy targets (woodland). Dense ivy <i>Hedera helix</i> established throughout the group, which obscures tree features and potential defects.	Acute branch unions	Parked vehicles	P2	P	100 %	6	< 1/1M (BA)	Sever ivy at bases of affected trees to facilitate future inspections	Low
G004	Sycamore <i>Acer pseudoplatanus</i> Common ash <i>Fraxinus excelsior</i> Common whitebeam <i>Sorbus aria</i>	SM	10-20	7	19	F	Group comprising approx. 10 trees, all of which encroach onto the roof of an adjacent property. Multiple specimens display acute branch unions and heavily leaning main stems. No long-term retention value due to position on retaining wall top.	Acute branch unions	Residential gardens	H3	3	100 %	6	< 1/1M (BA)	Remove group	Low

# Appendix 3: Tree Plan

<b>Site name:</b>	Land adjacent to Station Road, Slaithwaite
<b>Drawing Number:</b>	WC-527.1a.3
<b>Client:</b>	Jess Brooke
<b>Revision:</b>	A
<b>Drawn By:</b>	Jack Delaney
<b>Date:</b>	12th May 2026
<b>Scale:</b>	1:500 @ A3

## Map Key:

	Site boundaries
	Individual trees identified to display defects and deemed to present a tolerable RoH, which have been recommended further remedial works
	Individual trees deemed to present a broadly acceptable RoH or a tolerable RoH that is already ALARP, which have been recommended low-priority remedial works in the interests of site management
	Groups of trees deemed to present a broadly acceptable RoH or a tolerable RoH that is already ALARP, which have been recommended low-priority remedial works in the interests of site management
	Groups of trees deemed to present a broadly acceptable RoH or a tolerable RoH that is already ALARP, recommended for further monitoring



**Woodsage Consulting Ltd**

T: [Redacted]  
 E: [info@woodsage.co.uk](mailto:info@woodsage.co.uk)  
 W: <https://woodsage.co.uk>