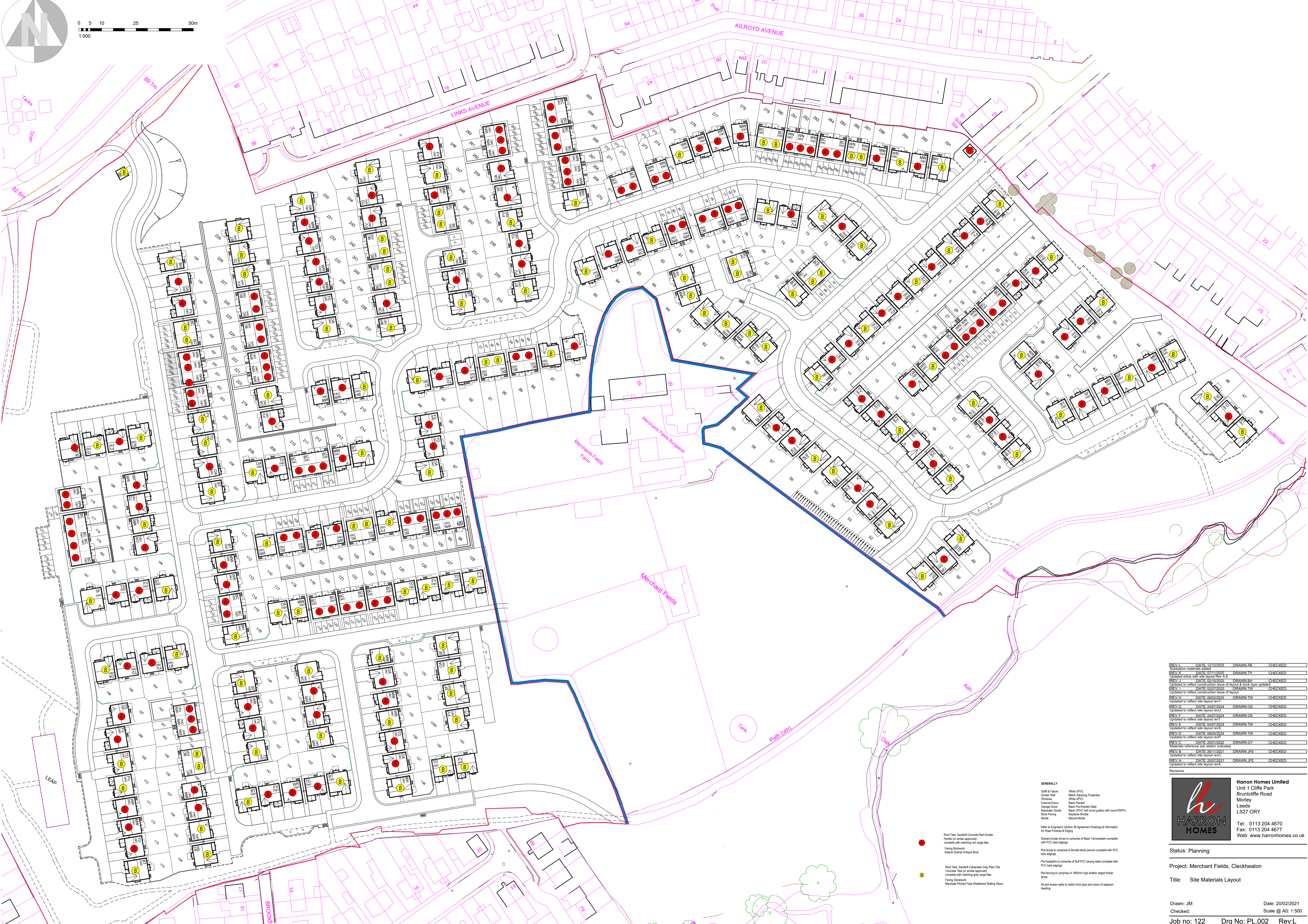


0 5 10 25 50m
1:500



REV. L	DATE 12/12/2005	DRAWN AB	CHECKED
REV. K	DATE 07/11/2005	DRAWN TH	CHECKED
REV. J	DATE 06/10/2005	DRAWN SH	CHECKED
REV. I	DATE 02/07/2005	DRAWN TV	CHECKED
REV. H	DATE 28/02/2005	DRAWN TW	CHECKED
REV. G	DATE 24/07/2004	DRAWN GS	CHECKED
REV. F	DATE 24/07/2004	DRAWN GS	CHECKED
REV. E	DATE 04/07/2004	DRAWN TW	CHECKED
REV. D	DATE 28/02/2004	DRAWN TW	CHECKED
REV. C	DATE 20/07/2002	DRAWN GY	CHECKED
REV. B	DATE 26/11/2001	DRAWN JEE	CHECKED
REV. A	DATE 20/07/2001	DRAWN JEE	CHECKED

HARRON HOMES

Harron Homes Limited
Unit 1 Cliffe Park
Bruncliffe Road
Morley
Leeds
LS27 0RY

Tel: 0113 204 4670
Fax: 0113 204 4677
Web: www.harronhomes.co.uk

Status: Planning

Project: Merchant Fields, Cleckheaton

Title: Site Materials Layout

Drawn: JM Date: 20/02/2021
Checked: Scale @ A0: 1:500
Job no: 122 Drg No: PL.002 Rev: L

- GENERALLY**
- Soils & Fences: White UPVC
 - Screen Wall: Match Adjacent Properties
 - Windows: White UPVC
 - External Doors: Black Framed
 - Garage Doors: Black Pre-Insulated Steel
 - Rainwater Gutter: Black UPVC half-round gutters with round RW/P
 - Block Paving: Keystone Bricks
 - Notes: Natural Stone
- Refer to Engineer's Section 38 Agreement Drawings & Information for Road Finishes & Edging
- Shared private drives to comprise of Black Tarmacadam complete with PCC kerb edgings
 - Plot drives to comprise of Brindle block pavers complete with PCC kerb edgings
 - Plot footpaths to comprise of Buff PCC paving slabs complete with PCC kerb edgings
 - Plot fencing to comprise of 1800mm high feather edged timber fence
 - All plot screen walls to match brick type and colour of adjacent dwelling

- Roof Tiles: Sandbutt Concrete Red Double Panels (or similar approved) complete with matching red verge tiles
Facing Bricks: Black Granite Antique Brick
- Roof Tiles: Sandbutt Calcedony Grey Plain Flat Concrete Tiles (or similar approved) complete with matching grey verge tiles
Facing Stonework: Marshalls Pitted Face Weathered Walling Stone