

**DESIGN DETAILS -**

YALE SLAM LOCK WITH KEY

OVERALL DIMENSIONS APPROX. 530MM X 680MM

DOOR THICKNESS APPROX. 23MM - SUBJECT TO TESTING OF MINIMUM STONE THICKNESS POSSIBLE



APPROX. WEIGHT 30 - 40KG

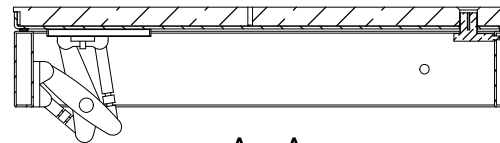
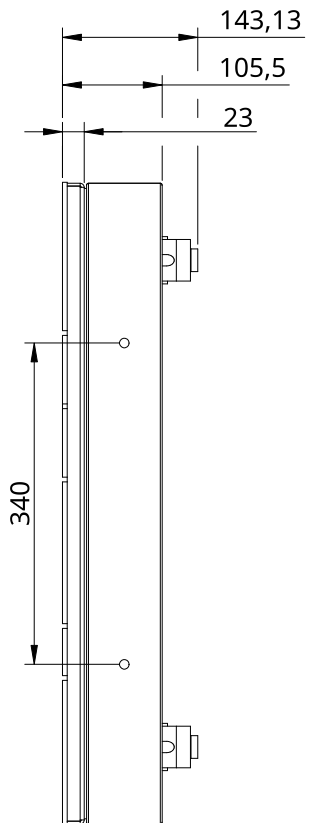
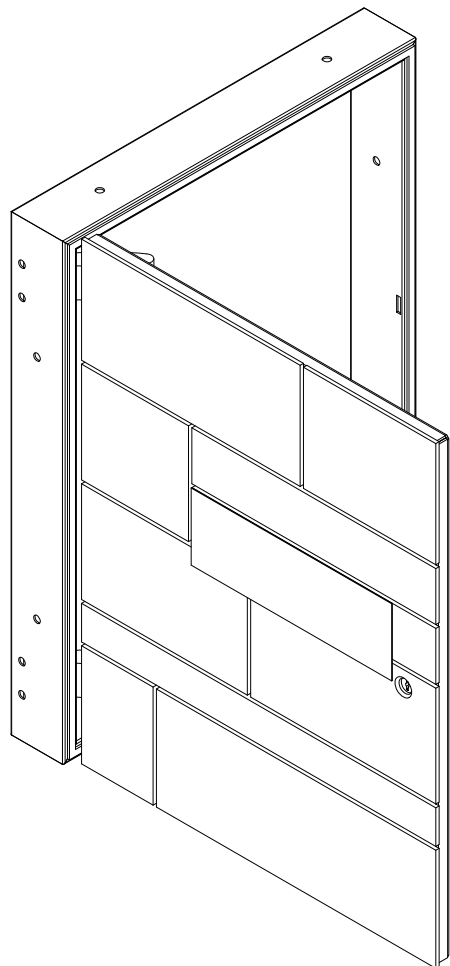
FRAME TO FIX TO SURROUNDING BLOCKWORK

DRY RISER ADHESIVE SIGN ON FRONT OF STONE PANELS

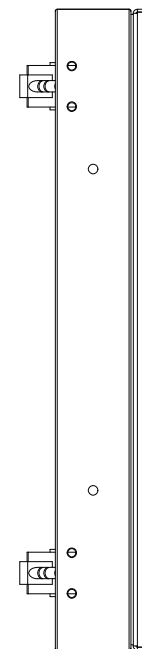
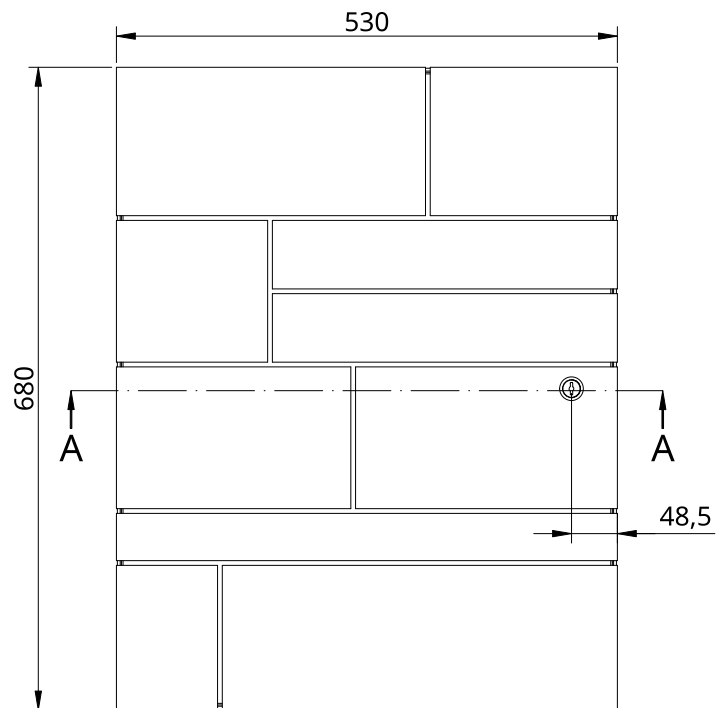
WEATHERPROOF SEAL BETWEEN DOOR PANEL AND FRAME



STONE PANELS MILLED DOWN TO 20MM AND ADHESIVE FIXED TO METAL DOOR PANEL TRAY - SUBJECT TO TESTING OF MINIMUM STONE THICKNESS POSSIBLE

UNLESS OTHERWISE SPECIFIED, DIMENSIONS ARE IN MILLIMETERS  ANGULAR = ± °  SURFACE FINISH ✓  DO NOT SCALE DRAWING  BREAK ALL SHARP EDGES AND REMOVE BURRS  FIRST ANGLE PROJECTION  		NAME	SIGNATURE	DATE	TITLE	
	DRAWN	CARA GARRAWAY		2026-01-16	530 x 680 - STONE CLAD DRY RISER DOOR	
	CHECKED				 I N T E R N A T I O N A L	
	APPROVED					
	MATERIAL	FINISH		SIZE <b>A4</b>	DWG NO. 530x680 - DRY RISER DOOR	
				SCALE 1:8	WEIGHT	SHEET 1 of 2



A - A



UNLESS OTHERWISE SPECIFIED, DIMENSIONS ARE IN MILLIMETERS  ANGULAR = ± °  SURFACE FINISH ✓  DO NOT SCALE DRAWING  BREAK ALL SHARP EDGES AND REMOVE BURRS  FIRST ANGLE PROJECTION  	NAME	SIGNATURE	DATE	TITLE
	DRAWN	CARA GARRAWAY	2026-01-16	530 x 680 - STONE CLAD DRY RISER DOOR
	CHECKED			 I N T E R N A T I O N A L
	APPROVED			
MATERIAL	FINISH		SIZE	DWG NO.
			A4	530x680-DRY_RISER
			SCALE	WEIGHT
			1:8	
			SHEET	REV.
			2 of 2	