

Network Rail (Huddersfield to Westtown (Dewsbury) Improvements) Order

Huddersfield Station Listed Building Consent Condition 2: Schedule of Materials

Network Rail

March 2026



Contents

1. INTRODUCTION 3
 1.1 Background 3

2. STAGED APPROACH TO DISCHARGE 4

3. INFORMATION INCLUDED IN THIS SUBMISSION 6

4. HUDDERSFIELD STATION - SCHEDULE OF MATERIALS 7

5. CONCLUSION 19
 5.1 Summary 19
 5.2 Next Steps 19

APPENDIX A – INDICATIVE IMAGES OF MATERIALS 20

APPENDIX B – HUDDERSFIELD STATION: FULL COLOUR SCHEME 26

1. INTRODUCTION

1.1 Background

- 1.1.1 The Scheme is part of a wider programme of works under the Trans-Pennine Route Upgrade (TRU) which will improve the Trans-Pennine railway between Manchester, Huddersfield, Leeds and York and improve connections between key towns and cities across the north of England.
- 1.1.2 Planning Direction for the Huddersfield to Westtown (Dewsbury) section of the TRU was received from the Department for Transport referenced TWA/21/APP/03, dated 3 November 2022.
- 1.1.3 Listed Building Consent for the works to Huddersfield Station as part of the Huddersfield to Westtown (Dewsbury) section of the TRU was granted as directed by the Secretary of State for the Department of Levelling Up, Housing and Communities on 27 June 2022 (LBC Ref: 2021/91328). This was granted subject to a number of conditions.
- 1.1.4 This document sets out details in relation to Condition 2 of the granted Listed Building Consent.

2. STAGED APPROACH TO DISCHARGE

- 2.1.1 The consent for the Order Scheme requires the discharge of various Planning and Listed Building Consent conditions. The materials specification and samples are just one of the elements which provide the foundation for the construction of the Order Scheme as they help inform how construction works should be undertaken in respect of the significance of the heritage asset.
- 2.1.2 Due to the nature of the construction programme and complexities of delivering the scale of the Order Scheme at Huddersfield Station, there are specifications and samples of materials that either will not be understood fully until after certain construction activities have commenced or may significantly delay the fulfilling of the Order Scheme in order for the required information to be gathered before works commence. As such, a phased approach to the materials condition utilising a partial discharge of the materials samples and specifications submission for different elements of the station is deemed necessary. This will afford a complete understanding, with approved materials, that informs high quality works considered appropriate for the sensitivities of the Grade I Listed Huddersfield Station, thereby complying with Condition 2 outlined and the phased approach agreed in principle by Kirklees Council.
- 2.1.3 This Schedule of Materials is intended to be read in conjunction with the associated Conservation Implementation Management Plan (CIMP) which comprehensively outlines the conservation framework and methodology in the context of works proposed to be undertaken within the Order Scheme. This Schedule of Materials is considered to align with the relevant Phase 5 of the CIMP, as this document details the material alterations proposed within the works covered by that phase of the CIMP.
- 2.1.4 Those elements of the Station covered by this Materials Schedule, aligned with the Phase 5 CIMP, comprise:
- Repair, reconditioning and reconstruction of the Tea Rooms (concerning wholly new materials)
- 2.1.5 Overall, this phased approach to submission utilises partial discharge of the condition to ensure that no works, including demolition, will take place until an approved specification and samples of materials for that element of the Station has been submitted and discharged. This requires that some approved works commence to inform later stages of the programme and allow for a fully complete and approved construction materials that entirely complies with the requirements of the condition. No works on any element would commence without formal approval based on an up to date and approved relevant materials sample and specifications with fully informed and precise details for the specific element for discharge.
- 2.1.6 Partial discharge of Condition 2 has already been approved for three previous phases of submission. Phase 1 of the CIMP included the Tea Rooms Methodology document, which details the material specification used for deconstruction and commencement of storage of Tea Rooms, and preparation for elements of reconstruction. This was submitted in June 2023 (ref: 2023/91628) and partial discharge approved in July 2023.
- 2.1.7 The Materials Schedule to align with Phase 2 of the CIMP included details of the materials specification for works to Roof A and the Penistone Line canopy. The Phase 2 Materials Schedule was submitted in October 2023 (ref: 2023/93177) and partial discharge approved in February 2024.
- 2.1.8 The Materials Schedule to align with Phase 3 of the CIMP included details of the materials specification for works to the footbridge and platforms. The Phase 3 Materials Schedule was submitted in April 2025 (ref: 2025/91093) and partial discharge approved in July 2025.

- 2.1.9 The Materials Schedule to align with Phase 4 of the CIMP included details of the materials specification for works to the extension of Roof A at its northern end, the new platform canopies and the extended passenger subway. The Phase 4 Materials Schedule was submitted in November 2025 (ref: 2025/93193) and partial discharge approved in February 2026.

3. INFORMATION INCLUDED IN THIS SUBMISSION

- 3.1.1 The wording of Condition 2 of the granted Listed Building Consent (LBC Ref: 2021/91328) is reproduced below:

2. (Huddersfield Station Materials) *Before the works hereby approved commence, or within a timescale to be otherwise agreed in writing by the local planning authority, samples and specifications of all materials to be used on all external elevations, roofs and subways of the works shall be submitted to and approved in writing by the local planning authority. The works shall be constructed only using the approved materials unless otherwise agreed in writing by the local planning authority.*

- 3.1.2 This document details the information required in relation to Condition 2, for details of methodology covered, see the corresponding Phase 5 Conservation Implementation Management Plan (CIMP) (see above, Section 2). This Materials Schedule document comprises a schedule of the materials to be used on all external elevations of these parts of the station.
- 3.1.3 Once procurement of the materials has been undertaken via the project supply chain, photographs and detailed specifications of materials and finishes will be obtained by Network Rail. These will be shared with Kirklees Council via the established TRU Heritage Working Group, and subsequently will be included, as appropriate, in future submissions to partially discharge the condition further.
- 3.1.4 Where necessary, samples of the material(s) to be used will be made available by Network Rail for inspection by the Kirklees Council Conservation Officer (and Historic England where appropriate). Where samples of materials are to be shared, these are identified in the schedule of materials below. Sharing of the sample(s) and any further agreement on the approach will be arranged and confirmed via the established TRU Heritage Working Group.
- 3.1.5 We do not anticipate any need to depart from the information provided, however, there may be unforeseen circumstances which require us to revise proposals. In such circumstances Kirklees Council will be notified as soon as possible, and their agreement sought on the required change in materials through the established TRU Heritage Working Group.

4. HUDDERSFIELD STATION - SCHEDULE OF MATERIALS

4.1.1 Table 4-1 below outlines the Schedule of Materials to be used at Huddersfield Station, relating to those elements covered in the corresponding Phase 5 CIMP. This Materials Schedule covers only those materials used within the reconstruction of the Tea Rooms which are wholly new to the structure, i.e. neither reused nor a like-for-like replacement.

Table 4-1 Huddersfield Station – Schedule of Materials for new elements for the reconstruction of the Tea Rooms

Item	Location	Proposal	Colour	Additional Requirements
Tea Rooms (new materials) - External				
Windows	Windows - throughout	7.5mm (3.8 mm+3.8 mm) annealed laminated safety glass	Clear	Safety glass improves impact resistance and overall robustness while ensuring minimal visual or material change to the existing components. Sash glazing recesses will be modified to accommodate the thickness of the proposed laminated glass.
Windows (toilets)	Windows W02, W25, W27, W28 – toilet areas	Lower sash panels - Obscure laminated glass panels for privacy	White clouded	Sash glazing recesses will be modified to accommodate the thickness of the proposed laminated glass. Sample of material can be shared with Conservation Officer, if required. Bay numbers and window numbers can be found in Appendix C.
Window ironmongery	Windows - throughout	Traditional ironmongery to match originals as closely as possible	Brass finish (typically)	Sample of material can be shared with Conservation Officer, if required.
Pivot window	Bay 3 and Bay 24	7.5mm (3.8 mm+3.8 mm) annealed laminated safety glass, timber glazing bars.	Clear glass and painted timber – colour TBC	Safety glass improves impact resistance and overall robustness while ensuring minimal visual or material change to the existing components.

Item	Location	Proposal	Colour	Additional Requirements
				<p>Tea Rooms colour scheme to be confirmed – will be shared with the Conservation Officer in future phase of submission, current colour scheme included in Appendix B.</p> <p>Bay numbers and window numbers can be found in Appendix C.</p>
Cladding and dado panel	Bays 3, 24, 27 and 28	New timber dado panelling and cladding to match existing external dado panels	Timber painted – colour TBC	<p>Tea Rooms colour scheme to be confirmed – will be shared with the Conservation Officer in future phase of submission, current colour scheme included in Appendix B.</p> <p>Bay numbers and window numbers can be found in Appendix C.</p>
Window sashes	Bays 27 and 28	New lower timber window sashes	Timber painted – colour TBC	<p>Tea Rooms colour scheme to be confirmed – will be shared with the Conservation Officer in future phase of submission, current colour scheme included in Appendix B.</p> <p>The existing trickle vents above the windows have degraded and are beyond repair. Integrated trickle ventilation at the head of each pivot or sash window are proposed, either within the frame itself or within the cladding zone above.</p> <p>Final design is TBC. Further details can be provided to the Conservation Officer if required.</p> <p>Bay numbers and window numbers can be found in Appendix C.</p>

Item	Location	Proposal	Colour	Additional Requirements
Doors	External doors - throughout	Bespoke timber doors, 7.5mm (3.8 mm+3.8 mm) annealed laminated safety glass glazing panels	Timber painted – colour TBC	Tea Rooms colour scheme to be confirmed – will be shared with the Conservation Officer in future phase of submission, current colour scheme included in Appendix B. Safety glass improves impact resistance and overall robustness while ensuring minimal visual or material change to the existing components
Door operators and hardware	All doors	Matching suite of door opening operators, push pads and associated door ironmongery	Stainless steel finish	Final design is TBC. Sample of material can be shared with Conservation Officer, if required.
Roof				
Roof covering	External roof covering	Proprietary ventilated standing-seam zinc roof system, installed over new plywood sheathing	Natural unpatinated zinc	New substrate addresses concerns over the structural condition of the original sarking boards and provides the required support for maintenance access. Timber battens will create a ventilation zone above the structural timber diaphragm.
Roof lantern glazing	External roof above waiting area	3.8+3.8 mm annealed laminated safety glass	Clear	Safety glass improves impact resistance and overall robustness while ensuring minimal visual or material change to the existing components (previously Georgian wired glass).
Flashing and upstands	External roof	Bespoke zinc flashings and upstands to match the profile of the existing cast-iron console brackets	Natural unpatinated zinc	Detail designed to protect the junction with the curved top sections of the brackets protruding above roof level.
Tea Rooms (new materials) - Internal				

Item	Location	Proposal	Colour	Additional Requirements
Toilets				
Masonry Walls	Internal toilet walls	Internal masonry walls will be finished in lime plaster, tiled finishes at low level in WC areas.	Painted masonry - colour TBC Tiled walls – colour TBC	Tea Rooms colour scheme to be confirmed – will be shared with the Conservation Officer in future phase of submission, current colour scheme included in Appendix B. Final colour and pattern design- for wall tiling is TBC, an indicative selection of options is provided in Appendix A, Insert A-5.
Plasterboard walls	Internal toilet walls	Internal plasterboard linings will be jointed and skim-coated with gypsum plaster, tiled finishes at low level in WC areas.	Painted plasterboard - colour TBC	Tea Rooms colour scheme to be confirmed – will be shared with the Conservation Officer in future phase of submission, current colour scheme included in Appendix B.
Flooring	Internal toilet flooring	Anti-slip porcelain floor tiles from Westminster Floor Tiles range by H&E Smith. WC areas will be tiled in a Victorian-style polychrome geometric pattern within decorative tile borders.	Tiling - colour TBC	The floor tiling will be laid on a proprietary reinforced cement sand floating screed, installed on rigid insulation acting as a void-former. Floor tiling within the WC areas will be laid to 1:80 to 1:100 falls towards floor gulleys and will include matching profiled tiled skirtings for ease of cleaning. Final colour and pattern design is TBC, an indicative selection of options is provided in Appendix A, Insert A-3. Sample of material can be shared with Conservation Officer, if required.
Vanity units	Toilet vanity units	Proposed bespoke vanity units in the toilet areas comprise bespoke mirror	Terrazzo wash troughs	The mirror units include fully concealed sensor-operated hand dryers, recessed LED

Item	Location	Proposal	Colour	Additional Requirements
		<p>units, wash troughs and cover panel systems below.</p> <p>The wash troughs will be bespoke precast terrazzo units incorporating integrated wastes, sensor taps and soap dispensers.</p> <p>The cover panel system below the wash troughs will be formed from high-density solid grade laminate with a decorative finish to both sides and polished black radiused edges.</p>	<p>Laminate cover panels</p> <p>TBC</p>	<p>lighting, hinged mirror panels and hand-dryer icons etched into the glass.</p> <p>The base of the cover panel system is to be recessed to accommodate tiled covered skirtings.</p> <p>Final design is TBC, an indicative selection of options is provided in Appendix A, Insert A-11.</p> <p>Sample of material can be shared with Conservation Officer, if required.</p>
Baby change unit	Toilet baby change units	<p>Bespoke baby change unit comprises a proprietary baby change top and cover panel system below.</p> <p>The baby change profile top will be formed of high-pressure laminate with an anti-roll front upstand and splashbacks to backs and sides.</p> <p>The cover panel system below the baby change top will be formed from high-density solid grade laminate with a decorative finish to both sides and</p>	<p>Laminate</p> <p>TBC</p>	<p>The unit is manufactured by Venesta Washroom Systems.</p> <p>The base of the cover panel system is to be recessed to accommodate tiled covered skirtings.</p> <p>Final design is TBC, an indicative selection of options is provided in Appendix A, Insert A-12.</p> <p>Sample of material can be shared with Conservation Officer, if required.</p>

Item	Location	Proposal	Colour	Additional Requirements
		polished black radiused edges.		
Integrated plumbing panels	Toilets	<p>The proposed scheme incorporates an accessible pre-plumbed panelling system behind all WCs and urinals.</p> <p>Panels are formed from high-density solid-grade laminate with decorative finishes to both sides and polished black radiused edges, within an aluminium frame.</p>	TBC	<p>The system is manufactured by Venesta Washroom Systems and uses the VEPPS.</p> <p>Panels have a nominal thickness of 13 mm, with matching solid-grade laminate flash gaps.</p> <p>Final design is TBC, an indicative selection of options is provided in Appendix A, Insert A-10.</p> <p>Sample of material can be shared with Conservation Officer, if required.</p>
Sanitary fixtures and fittings	Toilets	Standard grabrails, pull chords etc.	TBC	<p>Final design is TBC, an indicative selection of options is provided in Appendix A, Insert A-9.</p> <p>Sample of material can be shared with Conservation Officer, if required.</p>
Lighting	Toilets	Recessed spotlights	TBC	<p>All new luminaires are compatible with a centralised lighting control system to support automated monitoring of luminaires or driver failures, energy use, and emergency lighting testing.</p> <p>Final design is TBC, an indicative selection of options is provided in Appendix A, Insert A-7.</p> <p>Sample of material can be shared with Conservation Officer, if required.</p>

Item	Location	Proposal	Colour	Additional Requirements
Ventilation extraction fans	WCs	Mechanical extract ventilation	TBC	Final design is TBC. Sample of material can be shared with Conservation Officer, if required.
Waiting Room				
Masonry Walls	Waiting room walls	Internal masonry walls will be finished in lime plaster.	Painted masonry - colour TBC	Tea Rooms colour scheme to be confirmed – will be shared with the Conservation Officer in future phase of submission, current colour scheme included in Appendix B.
Internal wall linings	Waiting room walls	Timber frame - timber pencil round tongue and groove cladding boards to match original profile in café, painted.	Painted wall linings - colour TBC	Tea Rooms colour scheme to be confirmed – will be shared with the Conservation Officer in future phase of submission, current colour scheme included in Appendix B.
Flooring	Waiting room floors	Anti-slip porcelain floor tiles from Westminster Floor Tiles range by H&E Smith in a chequerboard pattern within a decorative tile border.	Tiling – colour TBC	Final colour and pattern design is TBC, an indicative selection of options is provided in Appendix A, Insert A-4. Sample of material can be shared with Conservation Officer, if required.
Doors	Between café and waiting room	Bespoke timber panelled doors	Varnished natural finish – to match joinery	Sample of material can be shared with Conservation Officer, if required.
Wall lights	Internal café walls	Victorian-inspired style wall luminaires	TBC	All new luminaires are compatible with a centralised lighting control system to support automated monitoring of luminaires or driver failures, energy use, and emergency lighting testing. Final design is TBC, an indicative selection of options is provided in Appendix A, Insert A-7.

Item	Location	Proposal	Colour	Additional Requirements
				Sample of material can be shared with Conservation Officer, if required.
Pendant lighting	Internal café ceiling	Victorian-inspired style pendant luminaires	TBC	<p>All new luminaires are compatible with a centralised lighting control system to support automated monitoring of luminaires or driver failures, energy use, and emergency lighting testing.</p> <p>Final design is TBC, an indicative selection of options is provided in Appendix A, Insert A-7.</p> <p>Sample of material can be shared with Conservation Officer, if required.</p>
Café				
Masonry Walls	Internal café walls	Internal masonry walls will be finished in lime plaster.	Painted masonry - colour TBC	Tea Rooms colour scheme to be confirmed – will be shared with the Conservation Officer in future phase of submission, current colour scheme included in Appendix B.
Plasterboard walls	Internal café walls	Internal plasterboard linings will be jointed and skim-coated with gypsum plaster.	Painted plasterboard - colour TBC	Tea Rooms colour scheme to be confirmed – will be shared with the Conservation Officer in future phase of submission, current colour scheme included in Appendix B.
Recessed mat wells	Café floor	Barrier matting set within bespoke recessed matwells with aluminium edges.	TBC	<p>The surface of matting will be level with adjacent floor finishes to ensure ease of access.</p> <p>Final design is TBC, an indicative selection of options is provided in Appendix A, Insert A-1.</p>

Item	Location	Proposal	Colour	Additional Requirements
				Sample of material can be shared with Conservation Officer, if required.
Servery flooring area	Café floor	Linoleum sheet flooring on a plywood underlay. A smooth brass threshold strip will protect the edge of the linoleum at the opening in the side-screen.	Colour scheme – TBC Brass finish threshold strip	Final design is TBC, an indicative selection of options is provided in Appendix A, Insert A-2. Sample of material can be shared with Conservation Officer, if required.
Servery countertop	Servery	Quartz composite worktop, with matching splashbacks, supported on a plywood substrate will be fitted to both the front and rear counters.	TBC	Worktop will be fabricated to replicate the profile and visual character of the original marble top. Drainage grooves will be incorporated in the countertop. Final design is TBC. Sample of material can be shared with Conservation Officer, if required.
Sink	Servery	Stainless steel undermount sink with top-mounted monoblock kitchen mixer tap	Stainless steel finish	Final design is TBC. Sample of material can be shared with Conservation Officer, if required.
Casing for Roof B column	Café	Bespoke pine panelling, details to match the original panelled storage cupboard, including a dentilled cornice, applied to cladding around the column casing adjacent to the counter. Hinged gib door access hatch of solid pine.	Varnished natural finish – to match joinery	Hinged gib door access hatch, allowing inspection of the column base plate will be incorporated into the panelling design. The access hatch door will be of a quality and finish to match the historic joinery in the room and fitted with a lock. Illustrations/samples of varnish finish can be shared with Conservation Officer, if required.

Item	Location	Proposal	Colour	Additional Requirements
Café cupboards	Cafe	Two new bespoke pine panelled cupboards will be fabricated with details to match the original panelled storage cupboard.	Varnished natural finish – to match joinery	<p>Each cupboard will include a panelled door of solid pine, finished to match the historic joinery in the room. The panelling design will match the roof B column cladding, with applied panels of the same proportions and a dentilled cornice at the same height. Both cupboards will be lockable.</p> <p>Internally, the cupboards will be fitted with adjustable shelving and a removable base to allow access to services in the floor void.</p> <p>Illustrations/samples of varnish finish can be shared with Conservation Officer, if required.</p>
Bench table	Café	<p>Wall-mounted bench table for customer use.</p> <p>Fabricated from solid pine to match the quality and finish of the historic joinery.</p>	Varnished natural finish – to match joinery	<p>Supported by hidden brackets within the depth of the shelf, with additional wall-mounted brass brackets below.</p> <p>Illustrations/samples of varnish finish can be shared with Conservation Officer, if required.</p>
Pendant lighting	Café ceiling	Victorian-inspired style pendant luminaires	TBC	<p>All new luminaires are compatible with a centralised lighting control system to support automated monitoring of luminaires or driver failures, energy use, and emergency lighting testing.</p> <p>Final design is TBC, an indicative selection of options is provided in Appendix A, Insert A-7.</p> <p>Sample of material can be shared with Conservation Officer, if required.</p>

Item	Location	Proposal	Colour	Additional Requirements
Wall lights	Café walls	Victorian-inspired style wall luminaires	TBC	<p>All new luminaires are compatible with a centralised lighting control system to support automated monitoring of luminaires or driver failures, energy use, and emergency lighting testing.</p> <p>Final design is TBC, an indicative selection of options is provided in Appendix A, Insert A-7.</p> <p>Sample of material can be shared with Conservation Officer, if required.</p>
Extract fan	Above the café counter	Recessed ceiling extract fan	TBC	Final design is TBC. Sample of material can be shared with Conservation Officer, if required.
Heating and Cooling				
Radiators	Beneath fixed seating and behind tables within café area. Beneath windows in waiting area.	Column radiators positioned beneath fixed seating and behind tables within the café area. Beneath windows in the waiting room	White	<p>Final design is TBC, an indicative selection of options is provided in Appendix A, Insert A-6.</p> <p>Sample of material can be shared with Conservation Officer, if required.</p>
Over-door heaters	Above external exits	Over-door heaters will be installed above all external exits to act as air curtains and reduce heat loss during periods of door operation.	White	<p>Final design is TBC, an indicative selection of options is provided in Appendix A, Insert A-6.</p> <p>Sample of material can be shared with Conservation Officer, if required.</p>

Item	Location	Proposal	Colour	Additional Requirements
Radiant panels	WC facilities	Recessed radiant ceiling panels will be provided within both the male and female WC facilities to maintain suitable internal temperatures.	White	Final design is TBC, an indicative selection of options is provided in Appendix A, Insert A-6. Sample of material can be shared with Conservation Officer, if required.
Telecoms				
Public address speakers	Waiting room	Flush-mounted within the ceiling to reduce visual impact	TBC	Final design is TBC. Sample of material can be shared with Conservation Officer, if required.
CCTV cameras	Waiting room walls	Surface-mounted dome cameras with paintable skins, painted to match surrounding wall and ceiling finishes	Plastic white casing, black camera dome	Modular housings so only internal components require replacement. All units can be configured remotely to minimise operational disruption and reduce the need for working at height. Final design is TBC, an indicative selection of options is provided in Appendix A, Insert A-8. Sample of material can be shared with Conservation Officer, if required.
Customer information display	Waiting room wall	Surface mounted customer information display. Low-profile unit has a slim black bezel, installed on a tiltable bracket that remains largely concealed from view	Black plastic casing, LED screen	Final design is TBC, an indicative selection of options is provided in Appendix A, Insert A-8. Sample of material can be shared with Conservation Officer, if required.

5. CONCLUSION

5.1 Summary

- 5.1.1 As stated, this document is submitted in order to partially discharge Condition 2 of the granted Listed Building Consent for works to Huddersfield Station (LBC Ref: 2021/91328).
- 5.1.2 The works will be implemented with the materials used as agreed via this documentation. As detailed above in paragraph 3.1.5, any unforeseen circumstances leading to changes in the materials used will be communicated to Kirklees Council and changes in materials agreed accordingly.
- 5.1.3 Sample(s) of the materials to be used across the wholly new elements of the Tea Rooms will be made available by Network Rail to be shared with Kirklees Council, if required, as identified in the table above. Composite samples of repair and reconstruction details, such as entire sample bay reconstructions, will also be made available for inspection by the Kirklees Council Conservation Officer, as appropriate.
- 5.1.4 Sharing of the samples, photographs and detailed specifications, as well as any further agreement on the approach will be arranged and confirmed via the regular TRU Heritage Working Group.

5.2 Next Steps

- 5.2.1 It is anticipated that the information contained within this document will be sufficient to at least partially discharge Condition 2 of the granted Listed Building Consent for works to Huddersfield Station (LBC Ref: 2021/91328), in relation to those elements of the Station covered, namely new elements used in the reconstruction of the Tea Rooms.
- 5.2.2 Network Rail will submit further Material Schedule documents to accompany future phases of the Huddersfield Station Conservation Implementation Management Plan (CIMP) (as outlined in Section 2).

APPENDIX A – INDICATIVE IMAGES OF MATERIALS

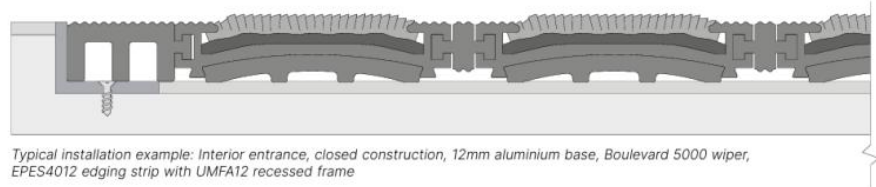


Typical example:

- > Closed construction
- > 12mm aluminium base
- > Boulevard 5000 Falcon wiper

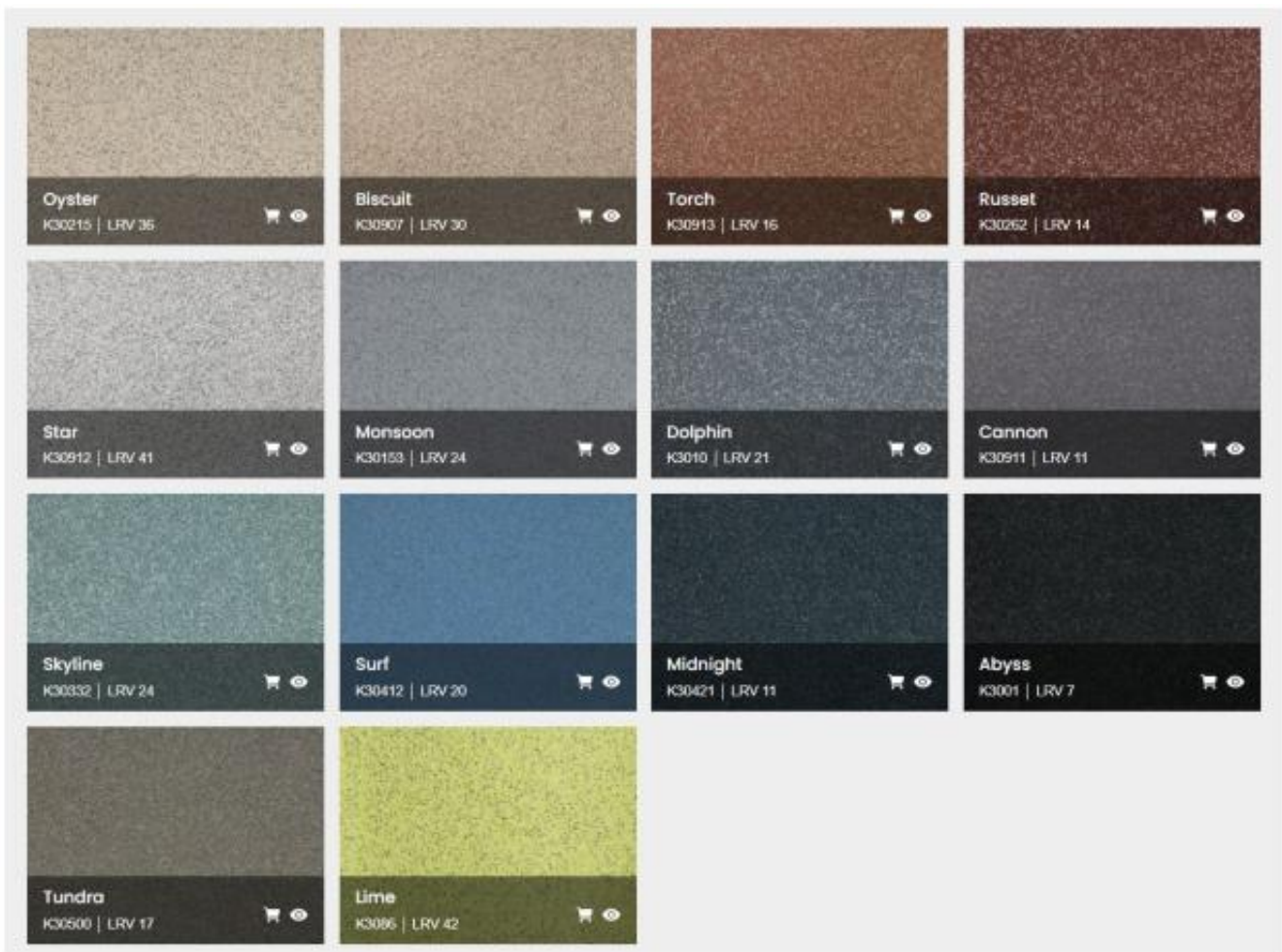


Aluminium base options

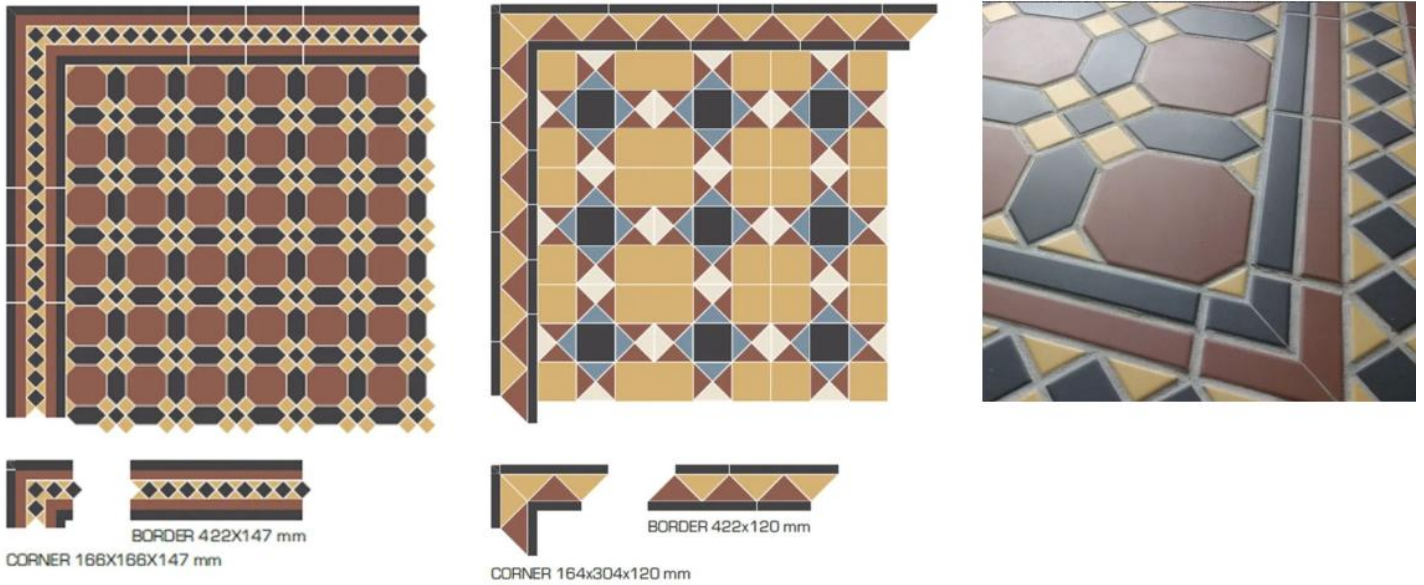


Typical installation example: Interior entrance, closed construction, 12mm aluminium base, Boulevard 5000 wiper, EPES4012 edging strip with UMFA12 recessed frame

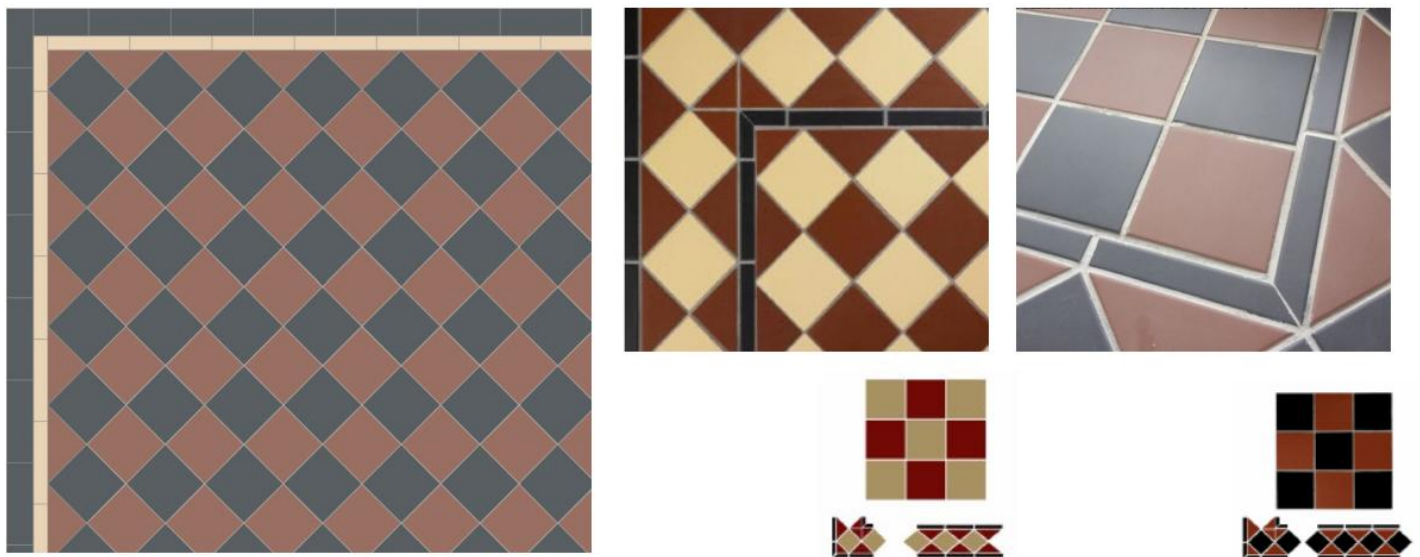
Insert A-1 – Matwell finish examples.



Insert A-2 – Vinyl finish examples for café servery floor.



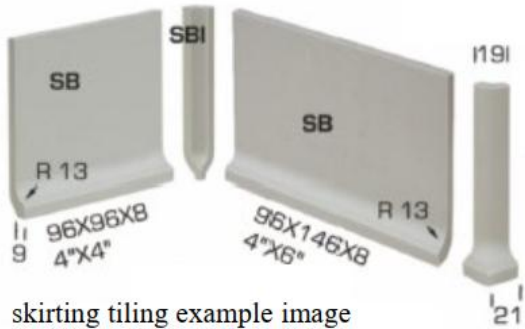
Insert A-3 – Tiling for toilet floor, indicative images of colour and pattern choices



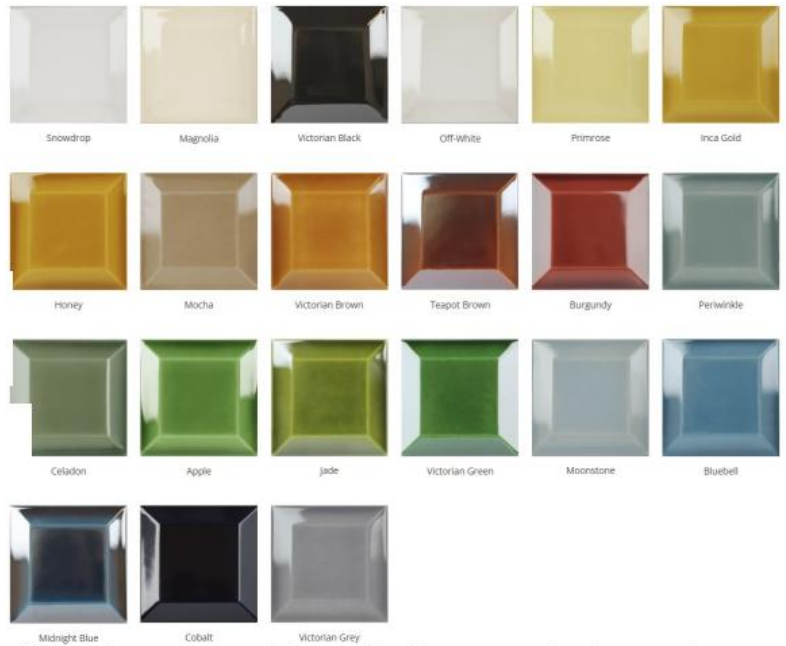
Insert A-4 – Tiling for waiting room floor, indicative images of colour and pattern choices.



tiling border example image



skirting tiling example image



tiling colour range – plain profile tile proposed, colours to be agreed

Insert A-5 – Tiling for toilet walls, indicative image of design. Tiling colours TBC further samples and images can be provided to the Conservation Officer if required.



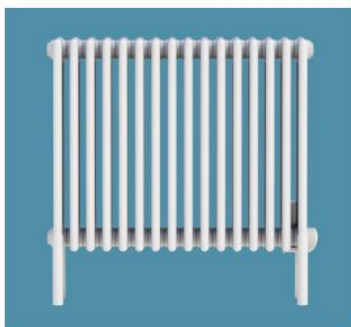
electric radiant panel heater



extract grille



surface mounted extract fan



electric column radiator



over door heater

Insert A-6 – Heating units, indicative images of designs. Further samples and images can be provided to the Conservation Officer if required.



recessed downlight



recessed downlight



linear feature light



recessed emergency light



recessed light sensor



pendant above counter



pendant



wall light



suspended escape signage

Insert A-7 – Indicative lighting design options. Further samples and images can be provided to the Conservation Officer if required.



CCTV camera



smoke detector



heat detector



socket face plates – finish to be agreed



CIS display

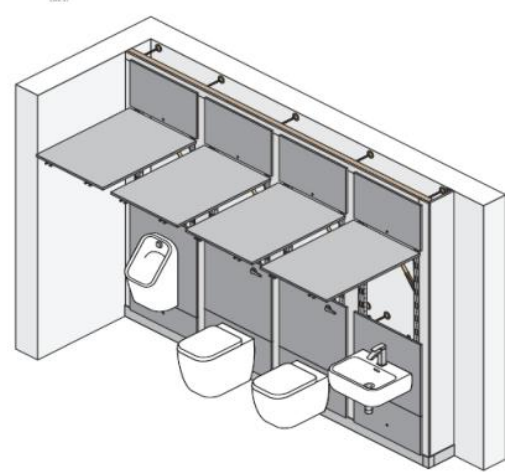


thermostat

Insert A-8 – Electrical equipment and telecoms, indicative images of design.

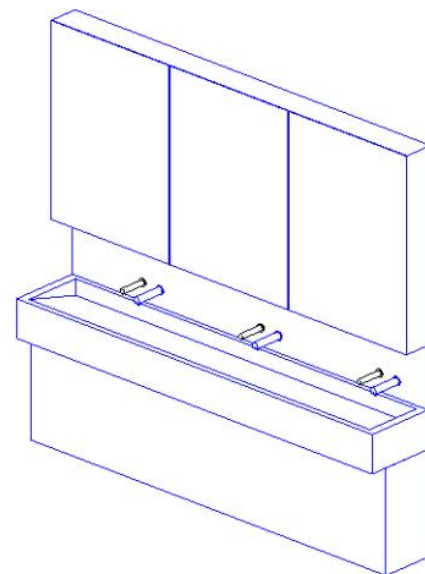


Insert A-9 - Sanitaryware and WC fittings for toilets, indicative images of design options.



laminate colour range – colour to be agreed

Insert A-10 – Laminate colour range for IPS (integrated plumbing system) panels, colour choice TBC, likely white or neutral.



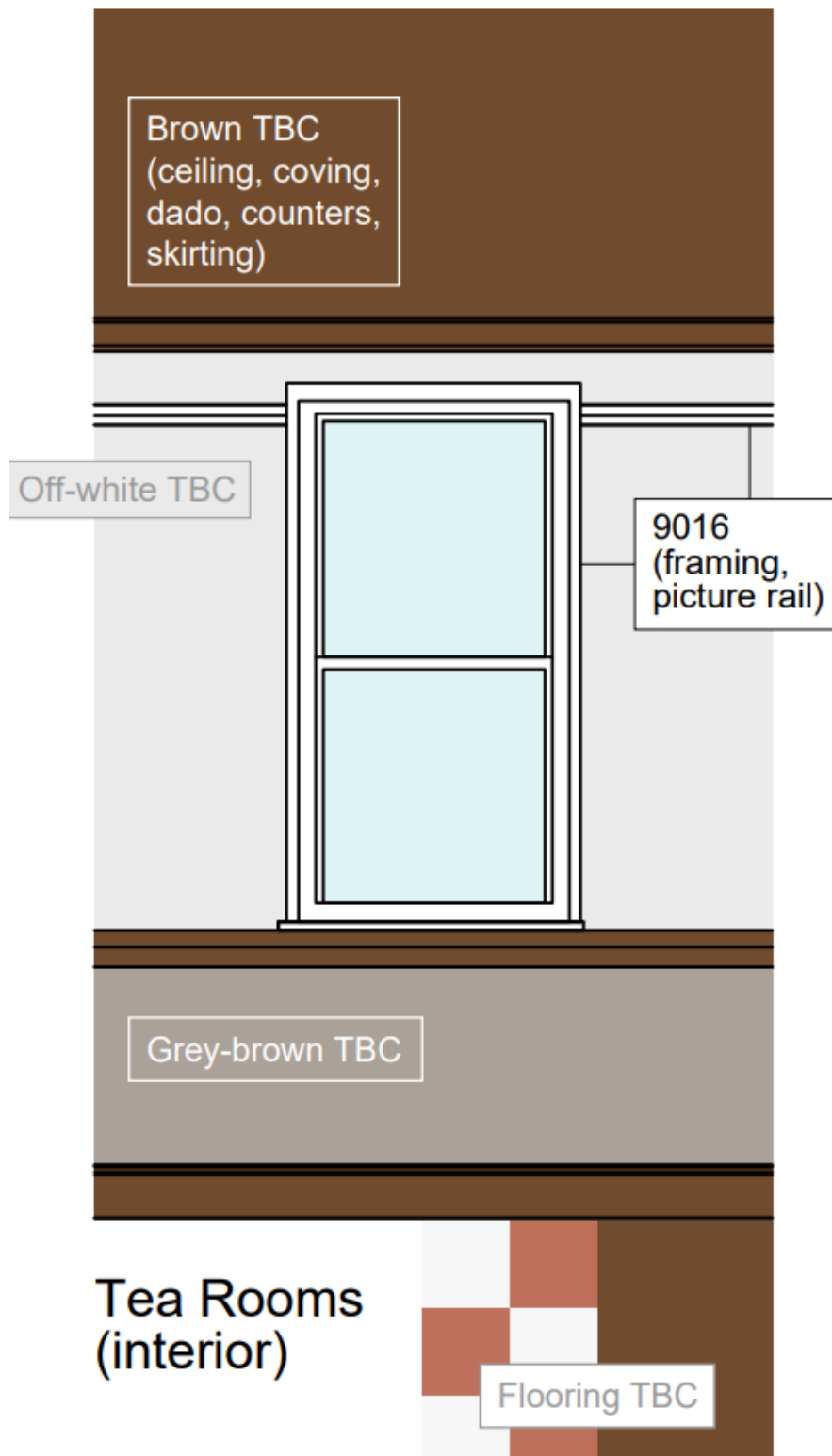
Insert A-11 – Vanity unit design, indicative image without terrazzo features, further samples and images can be provided to the Conservation Officer if required.



example image – proposal is without washbasin

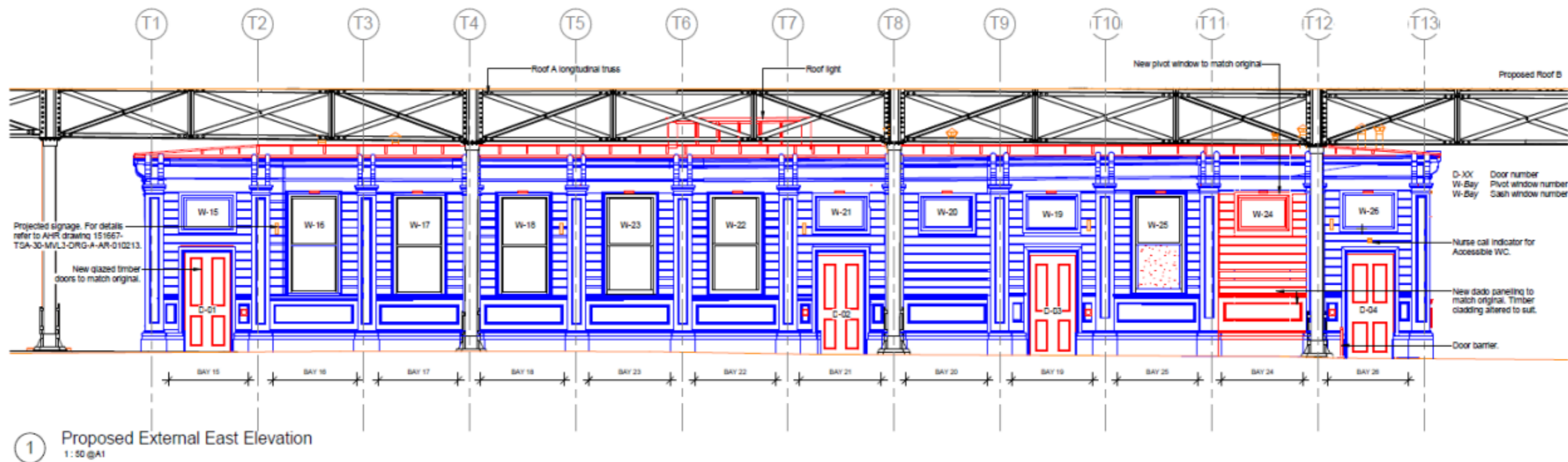
Insert A-12 – Baby change unit design, indicative image.

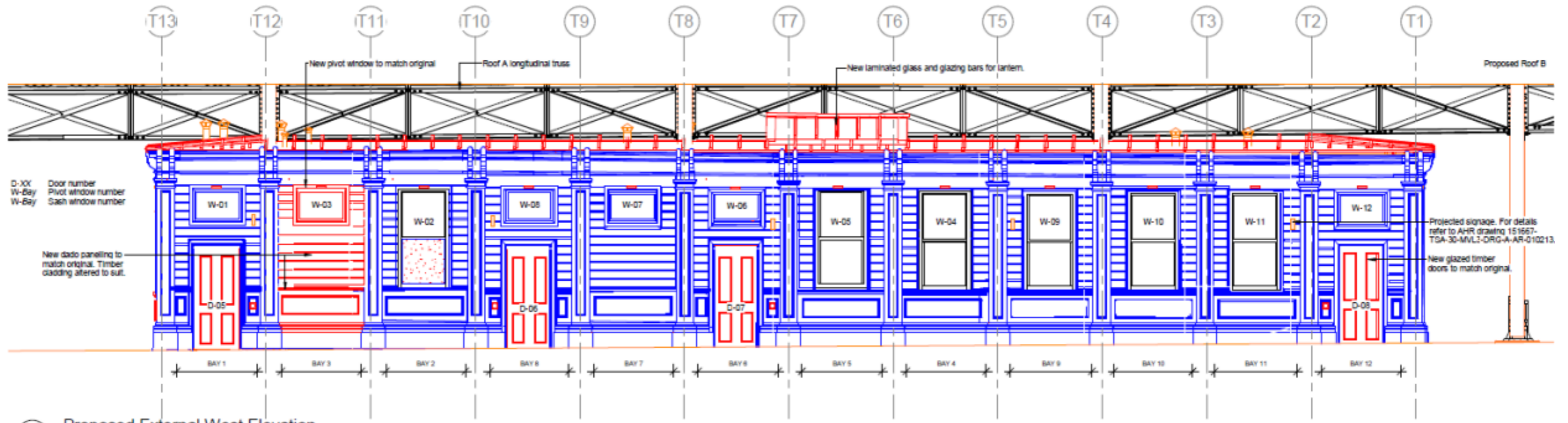
APPENDIX B – HUDDERSFIELD STATION: FULL COLOUR SCHEME



Insert B-1 – Tea Rooms internal colour scheme (TBC)

APPENDIX C – TEA ROOMS LAYOUT DIAGRAM, BAY NUMBERS





2 Proposed External West Elevation
1:50 @A1

Insert C-1 – Tea Rooms Bay Numbers

Network Rail
Waterloo General Office
London
SE1 8SW

www.networkrail.co.uk