

File Note: 054

Subject: Tea Rooms – Pavement Light

Date: 08/12/25

Introduction:

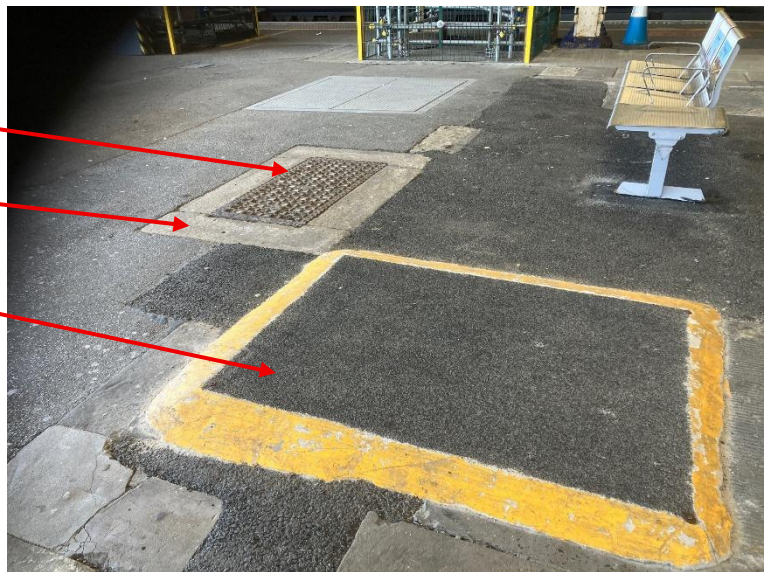
The following File Note records the condition and physical dimensions of the Pavement Light that has been removed from the Beer Cellar of the Huddersfield Tea Rooms.

Following removal of the Tea Rooms the Pavement Light was left in-situ on the platform. It was surrounded by perimeter of York Stone.

Cast Iron Pavement Light

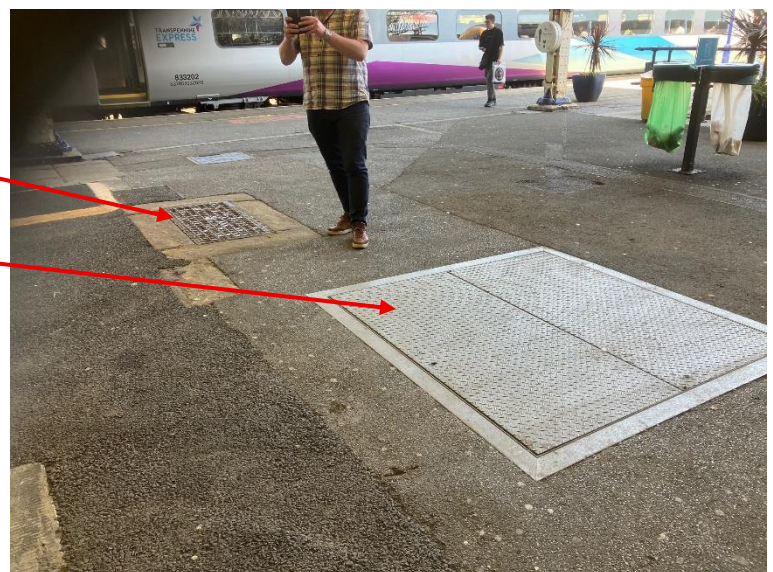
York stone surround

Former entrance into Beer Cellar.



Pavement Light

Barrel access doors for former beer cellar.



The Pavement Light was removed by the BAM site team and taken for storage on site before being collect by HPC for assessment and record.

Upper (face) side of the pavement light. The frame is damaged on 2No of the corners.



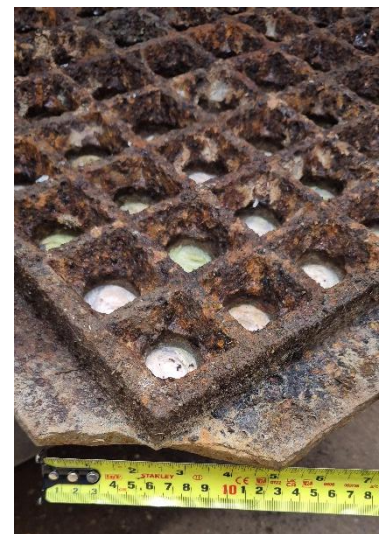
Lower (cellar) side of the pavement light. Showing circular glass blocks.

Note: Glas blocks are severely cracked and lower bulb elements are missing.

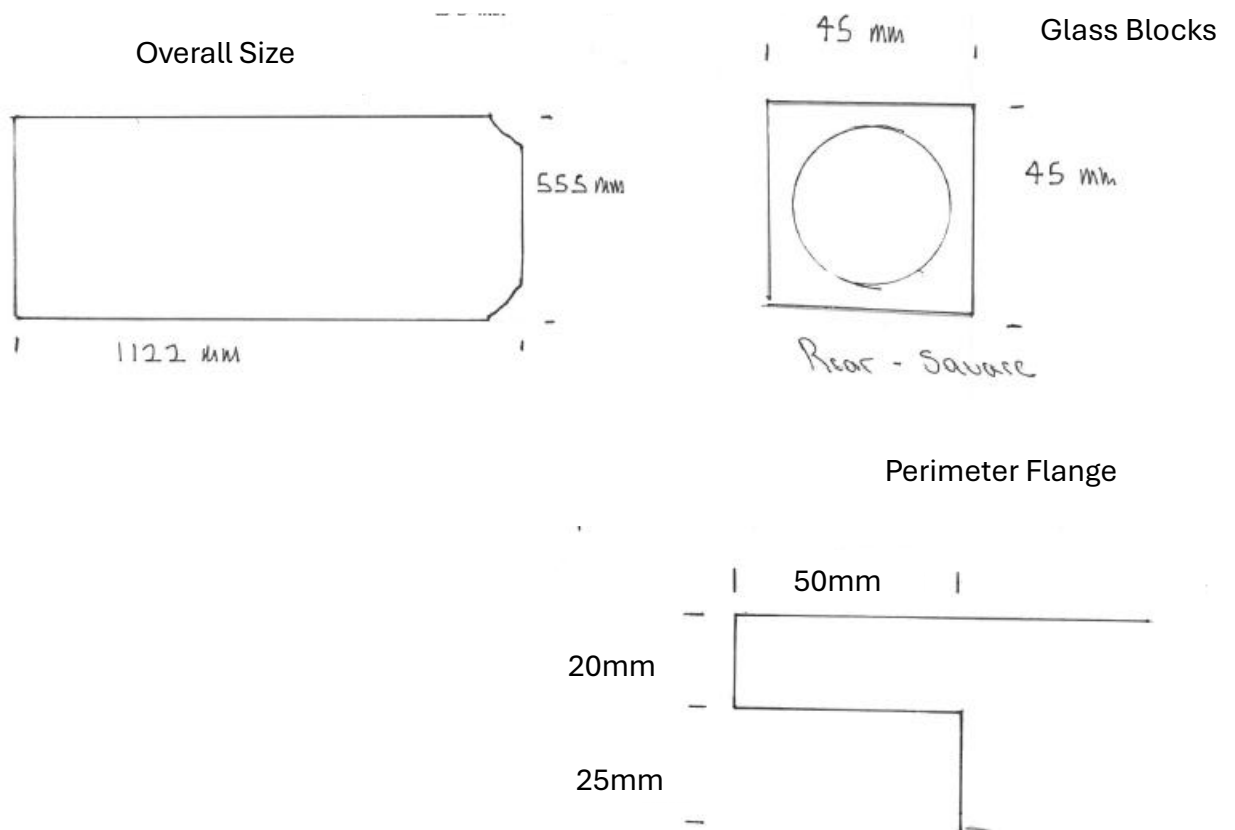


Damage to the 2No corners – this is within the upper perimeter flange only.

Note: Corrosion present in the crack interface indicating that crack s have been present for some time. (not cracked on removal).



Dimensions:



Condition

The pavement light is made from Grey Cast Iron and surface corrosion is present on both sides of the light. However, the lower side of the light where condensation has been allowed to build-up this is more severe. The majority of the glass blocks appear to be broken with severe cracking present in the glass and loss of the lower bulb elements. The two corners of the upper flange are damaged but no further cracking was observed.

If the pavement light is to be reinstated as a structural item then it will be necessary to fully clean the ironwork to assess its condition. This will require the removal of the glass blocks where loose or broken. Due to these being cracked they cannot be reinstated.

New glass blocks are not commercially available and would need to be remanufactured in either glass or resin.

Markings

The Pavement Light is marked with the Makers Name – Haywards London.

It has been possible to find the original manufacturers catalogue entry for this light which is noted below:

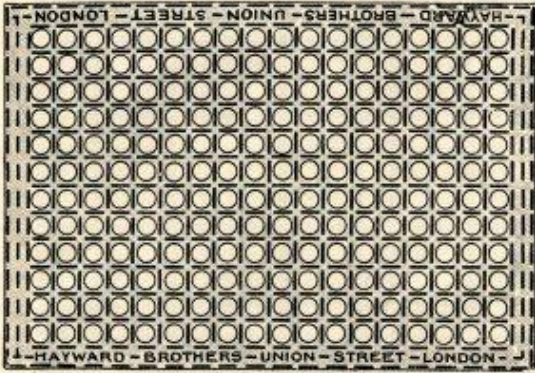
26

HAYWARD'S SPECIAL PLATFORM LIGHT

No. 13 PATTERN LIGHT

Extra Strong, with good foothold; suitable for light wheel traffic, RAILWAY PLATFORMS, SUBWAYS, &c.

HAYWARDS LTD.
 32, KING STREET WEST,
 MANCHESTER.



Over-all Size, 3 5/8"

Sight Opening, 3 5/8"

MADE TO ORDER.

Over-all dimensions, including 1 1/2-in. flange all round.

Lenses in Front.	Depth 7 Lenses.			Depth 8 Lenses.			Depth 9 Lenses.			Depth 10 Lenses.			Depth 11 Lenses.			Depth 12 Lenses.		
	Length.	Pt. Ins.	Super.	Length.	Pt. Ins.	Super.	Length.	Pt. Ins.	Super.	Length.	Pt. Ins.	Super.	Length.	Pt. Ins.	Super.	Length.	Pt. Ins.	Super.
11	2 4 1/2 x 1 7/8	4	1	2 4 1/2 x 1 9/8	4	6	2 4 1/2 x 2 0 1/8	4	10	2 4 1/2 x 2 2 1/8	5	6	2 4 1/2 x 2 4 1/8	5	10	2 4 1/2 x 2 6 1/8	6	3
12	2 6 1/2 x 1 7/8	4	4	2 6 1/2 x 1 9/8	4	9	2 6 1/2 x 2 0 1/8	5	7	2 6 1/2 x 2 2 1/8	5	10	2 6 1/2 x 2 4 1/8	6	3	2 6 1/2 x 2 6 1/8	6	8
13	2 9 1/2 x 1 7/8	4	7	2 9 1/2 x 1 9/8	5	1	2 9 1/2 x 2 0 1/8	5	6	2 9 1/2 x 2 2 1/8	6	3	2 9 1/2 x 2 4 1/8	6	8	2 9 1/2 x 2 6 1/8	7	2
14	2 11 1/2 x 1 7/8	5	0	2 11 1/2 x 1 9/8	5	6	2 11 1/2 x 2 0 1/8	6	0	2 11 1/2 x 2 2 1/8	6	9	2 11 1/2 x 2 4 1/8	7	3	2 11 1/2 x 2 6 1/8	7	9
15	3 1 1/2 x 1 7/8	5	4	3 1 1/2 x 1 9/8	5	10	3 1 1/2 x 2 0 1/8	6	4	3 1 1/2 x 2 2 1/8	7	2	3 1 1/2 x 2 4 1/8	7	8	3 1 1/2 x 2 6 1/8	8	3
16	3 3 1/2 x 1 7/8	5	7	3 3 1/2 x 1 9/8	6	2	3 3 1/2 x 2 0 1/8	6	8	3 3 1/2 x 2 2 1/8	7	6	3 3 1/2 x 2 4 1/8	8	1	3 3 1/2 x 2 6 1/8	8	8
17	3 6 1/2 x 1 7/8	5	10	3 6 1/2 x 1 9/8	6	5	3 6 1/2 x 2 0 1/8	7	0	3 6 1/2 x 2 2 1/8	7	11	3 6 1/2 x 2 4 1/8	8	6	3 6 1/2 x 2 6 1/8	9	0
18	3 8 1/2 x 1 7/8	6	3	3 8 1/2 x 1 9/8	6	11	3 8 1/2 x 2 0 1/8	7	6	3 8 1/2 x 2 2 1/8	8	6	3 8 1/2 x 2 4 1/8	9	1	3 8 1/2 x 2 6 1/8	9	9

Glazed with small Bull's-eye Lenses, 10/6 per foot super.

Instructions for Orders, see page 14.

HAYWARD BROTHERS & ECKSTEIN, LD., 187 TO 201 UNION ST., LONDON, S.E.

TELEGRAMS: "HAYWARD BROTHERS, LONDON"

TELEPHONE: HOP 193 & 195.