

**General Note**

This drawing is issued for the purposes of planning submission. It must not be used for construction, fabrication, or procurement. Copyright remains with the architect and this drawing must not be copied, reproduced, or disclosed without prior written consent.

**Residual Risk Register**

These drawings are issued for planning and pre-construction purposes only. A Construction Phase Plan and Health & Safety File shall be prepared by the appointed Principal Contractor/Principal Designer prior to construction in accordance with CDM 2015.

Residual risks have been highlighted on the drawing set, and listed below.

**Overhead cables**

Existing overhead cables and lines are identified on this drawing set. Design and works shall avoid contact with these services and follow regulatory control measures for overhead power lines

**Decommissioning of electrics**

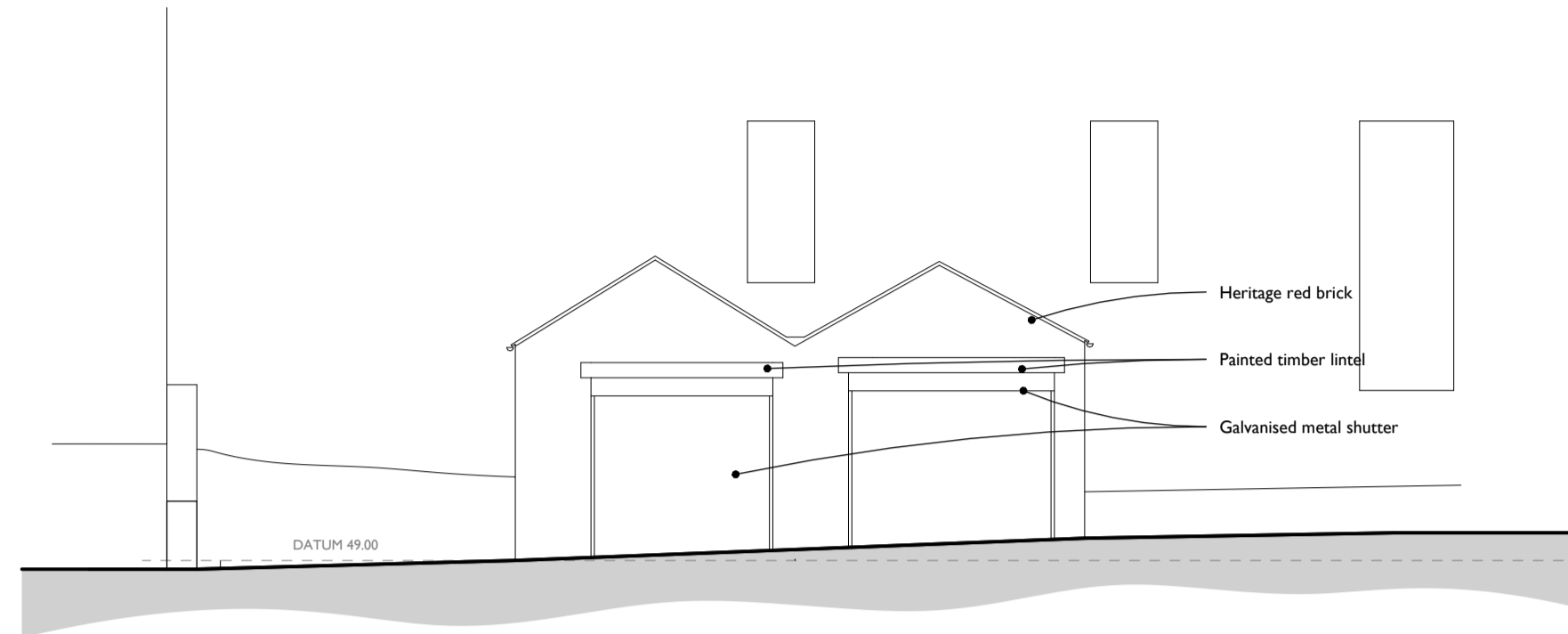
Existing electrical installations and services to be decommissioned are shown in this drawing set. Decommissioning works shall be planned and carried out by the contractor in accordance with safe systems of work, competent supervision and statutory requirements.

**Adjacent below ground services**

Reduced levels are proposed, with underground services adjacent and within the site boundary. The contractor must verify the location, depth and levels of all underground services on site prior to any excavation or works.

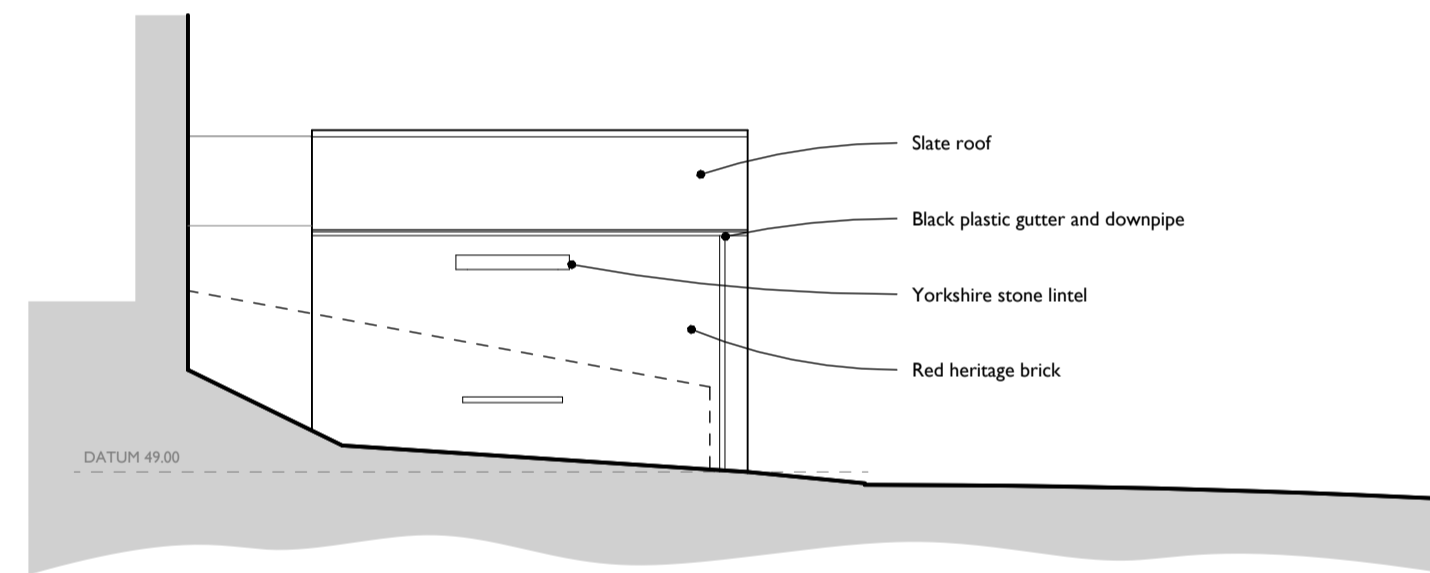
**Reduced levels adjacent to existing building.**

Contractors must verify all levels on site prior to work and plan safely for level differences and excavation risks. Trial pits and SE input required.



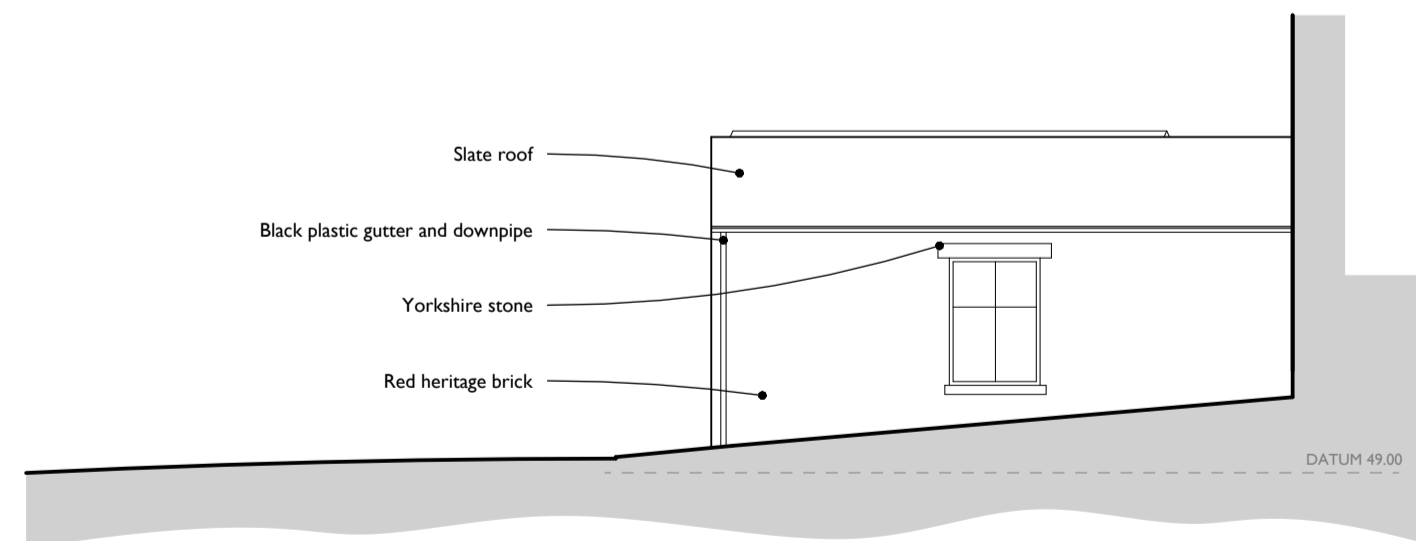
**Existing East Elevation**

1 : 100



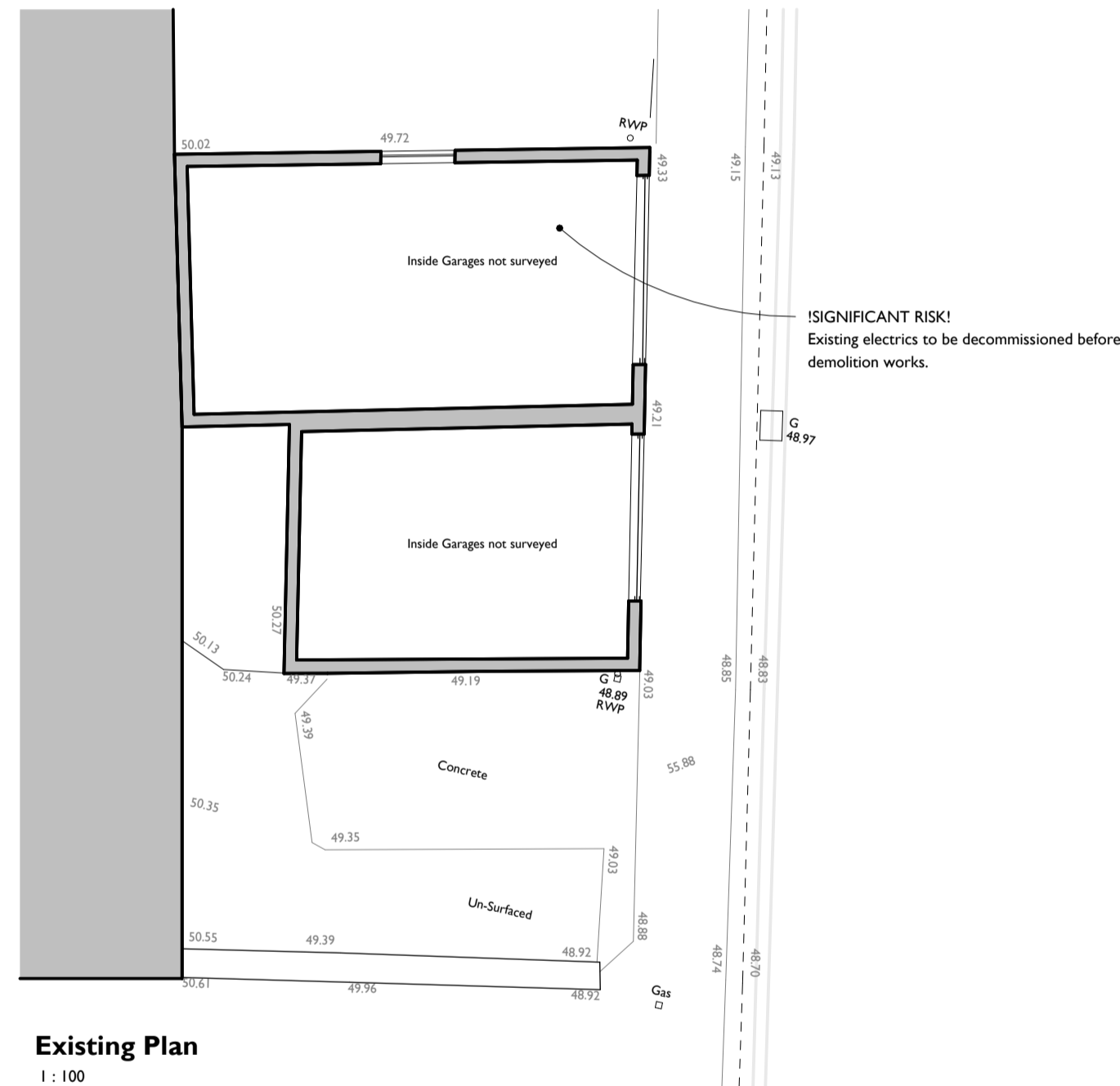
**Existing South Elevation**

1 : 100



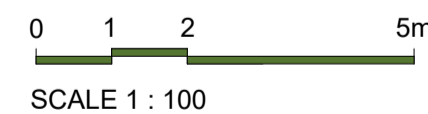
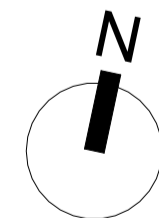
**Existing North Elevation**

1 : 100



**Existing Plan**

1 : 100



SCALE 1 : 100

Rev	Description	Drawn	Checked	Date
P03	Issued for Planning	DH	MW	27.03.26
P02	Preliminary planning set	DH	MW	25.02.26
P01	Issued for Information	DH	MW	05.02.26

Document Status : Purpose of Issue:

**S2 FOR INFORMATION**



Firth Buildings, 99 - 103 Leeds Rd, Dewsbury, WF12 7BU t: 01924 464342  
e: info@martinwalsh.co.uk w: www.martinwalsh.co.uk

Project

Proposed demolition of existing domestic garages and redesign existing car parking spaces to form new car park and landscaping

Title

Existing GA's

Client

Connect Housing

MWA Project	Scale	Original Paper Size	Paper Orientation	Drawn
6727	As indicated	@A2	Landscape	Author

File Identifier	Project	Originator	Volume	Level	Type	Role	Number	Revision
CHBS - MWA - XX - XX - DR - A - 0005								P03