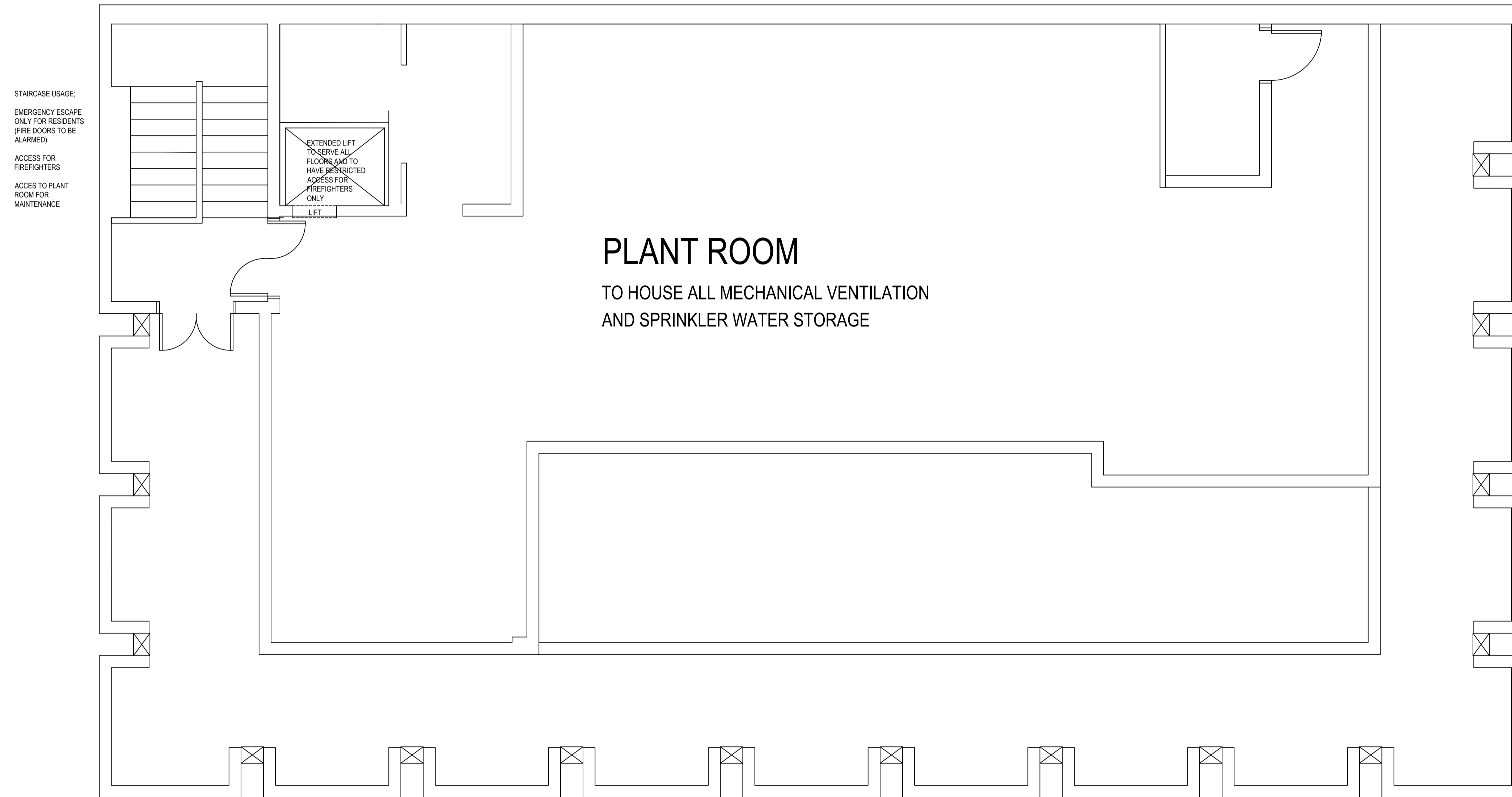
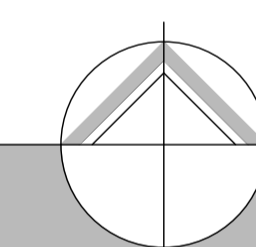


IF IN ANY DOUBT PLEASE ASK THE ARCHITECT FOR CLARIFICATION.
DO NOT SCALE FROM DRAWING. ALL DIMENSIONS TO BE CHECKED ON SITE.
THE COPYRIGHT FOR THESE DRAWINGS REMAINS THE PROPERTY OF THE ARCHITECT. THEY MUST NOT BE REPRODUCED IN ANY WAY WITHOUT THE ARCHITECT'S PRIOR WRITTEN CONSENT.



**SIXTH FLOOR PLAN - PLANT ROOM
TO REMAIN UNALTERED**



**northern design
partnership**

Chartered Architects
The Chapel, Millmoor Road,
Meltham, Holmfirth, HD9 5JU

www.northerndesignpartnership.co.uk
instagram: @northerndesignp
Telephone: (01484) 854848

client	HD CENTRAL		
project	DEVELOPMENT OF FORMER HSBC BANK 2 CLOTH HALL STREET HUDDERSFIELD HD1 2EG		
drawing	PROPOSED SIXTH FLOOR PLAN		
revision	notes	date	drawn
A	NOTES AMENDED TO OVERCOME PLANNING CONCERNS	06.25	PB
scale :	1:50 AT A1	03.25	PB
project no.	drawing no.	revision	
2412	16	A	