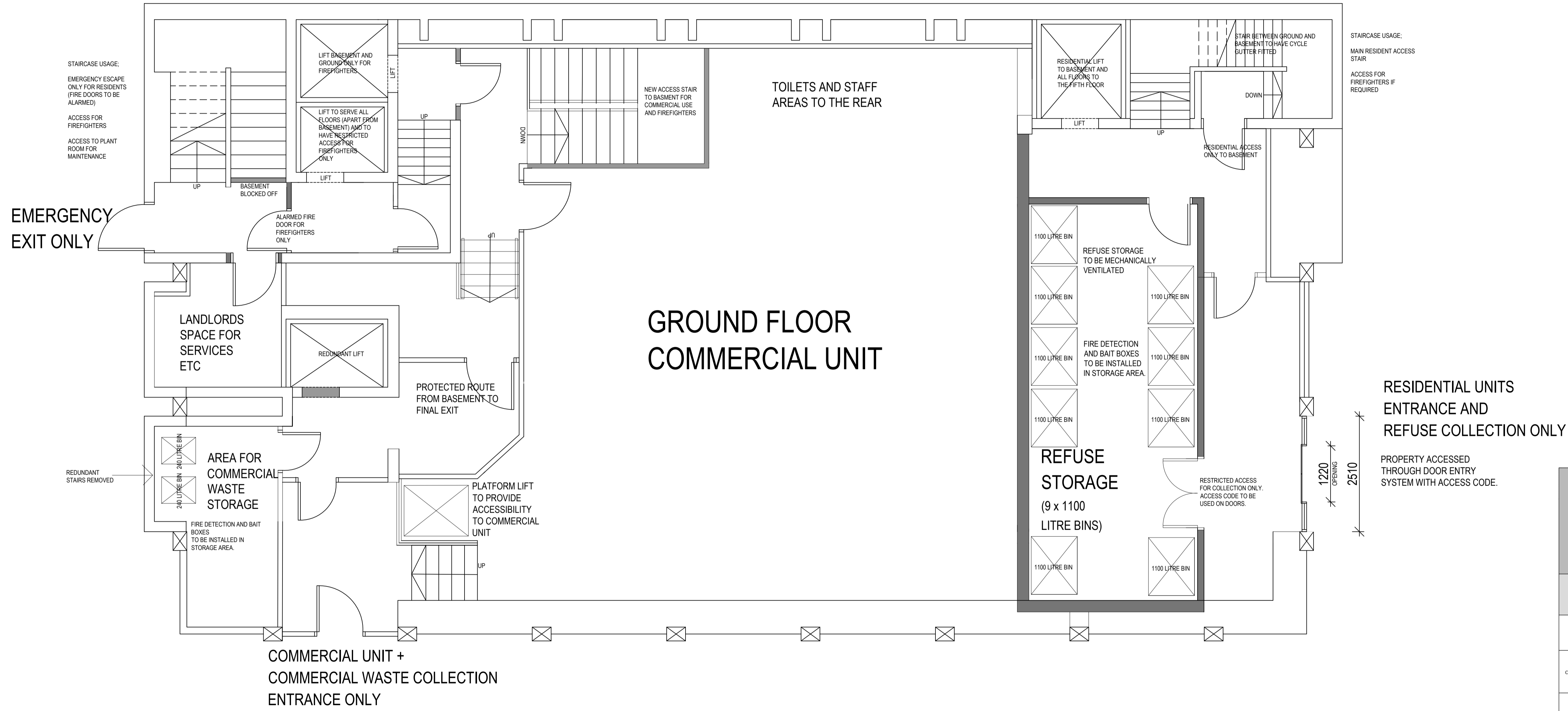


IF IN ANY DOUBT PLEASE ASK THE ARCHITECT FOR CLARIFICATION.  
 DO NOT SCALE FROM DRAWING. ALL DIMENSIONS TO BE CHECKED ON SITE.  
 THE COPYRIGHT FOR THESE DRAWINGS REMAINS THE PROPERTY OF THE ARCHITECT. THEY MUST NOT BE REPRODUCED IN ANY WAY WITHOUT THE ARCHITECT'S PRIOR WRITTEN CONSENT.



**GROUND FLOOR PLAN**



**northern design partnership**

Chartered Architects  
 The Chapel, Millmoor Road,  
 Meltham, Holmfirth, HD9 5JU

www.northerndesignpartnership.co.uk  
 Instagram: @northerndesignp  
 Telephone: (01484) 854848

client	HD CENTRAL		
project	DEVELOPMENT OF FORMER HSBC BANK 2 CLOTH HALL STREET HUDDERSFIELD HD1 2EG		
drawing	PROPOSED GROUND FLOOR PLAN		
revision	notes	date	drawn
A	LAYOUT AMENDED TO OVERCOME PLANNING CONCERNS	06.25	PB
B	ADDITIONAL NOTES ADDED IN RESPONSE TO PLANNING CONCERNS	07.25	PB
C	LAYOUT AMENDED TO OVERCOME HSE CONCERNS	07.25	PB
D	WHEELCHAIR ACCESS LIFT ADDED TO COMMERCIAL UNIT	08.25	PB
scale :	1:50 AT A1	03.25	PB
project no.	2412	drawing no.	10
		revision	D