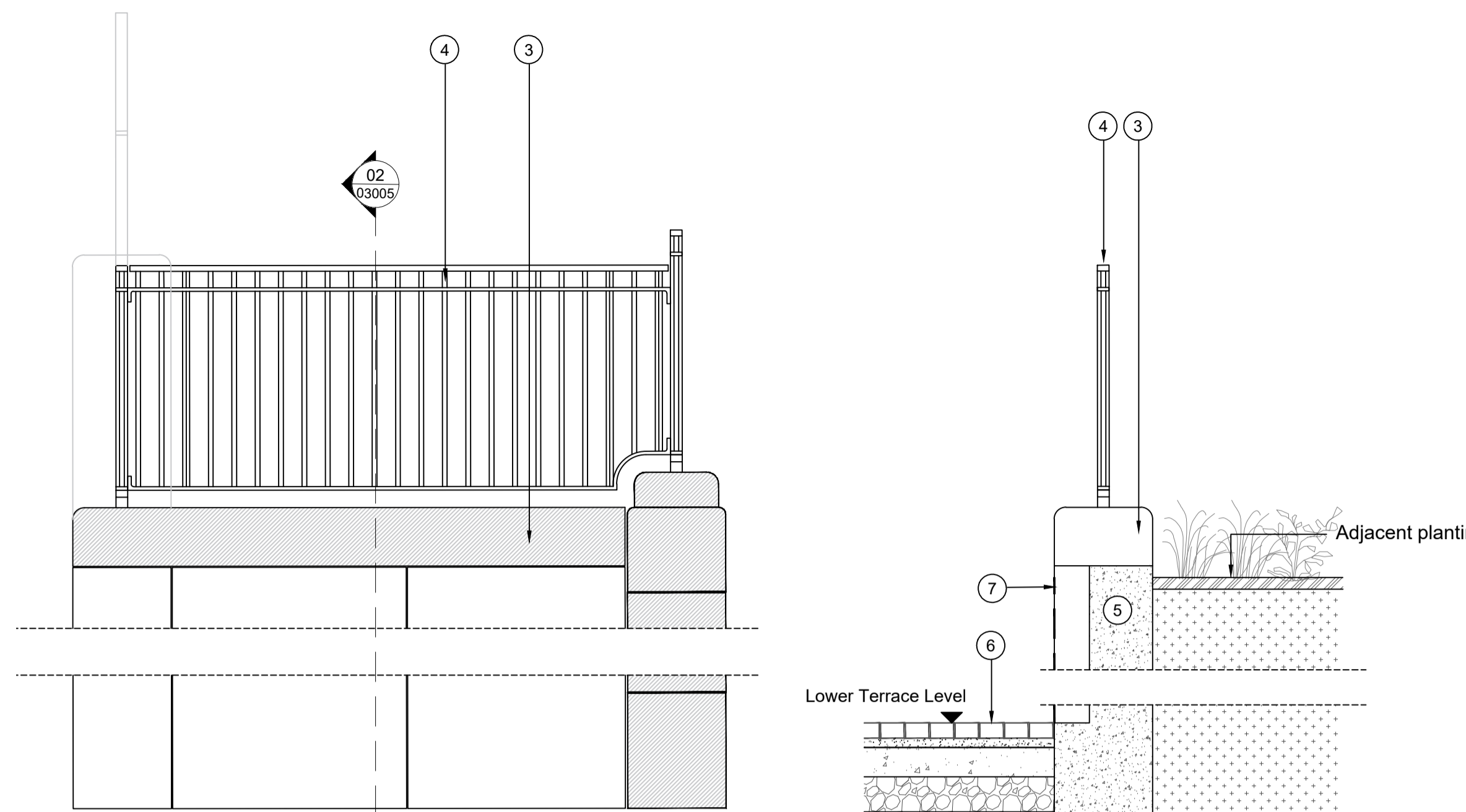
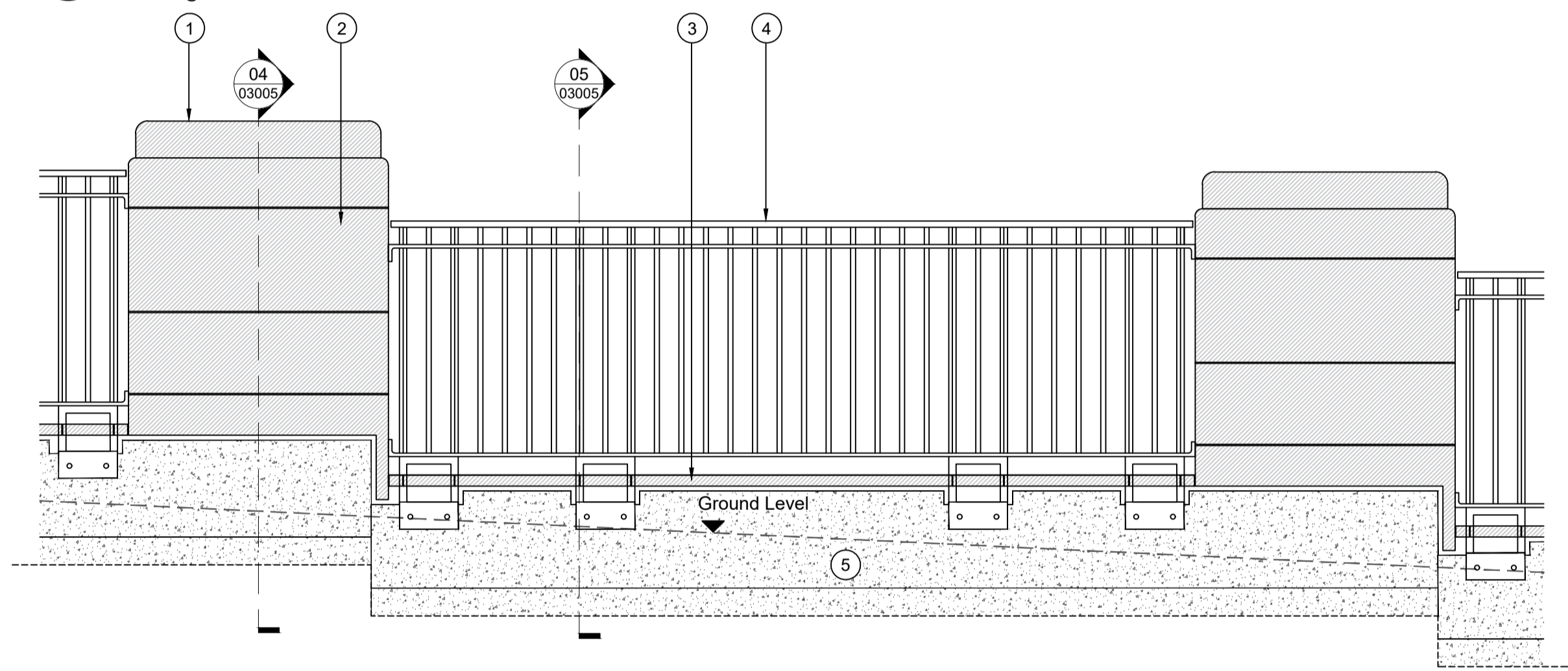


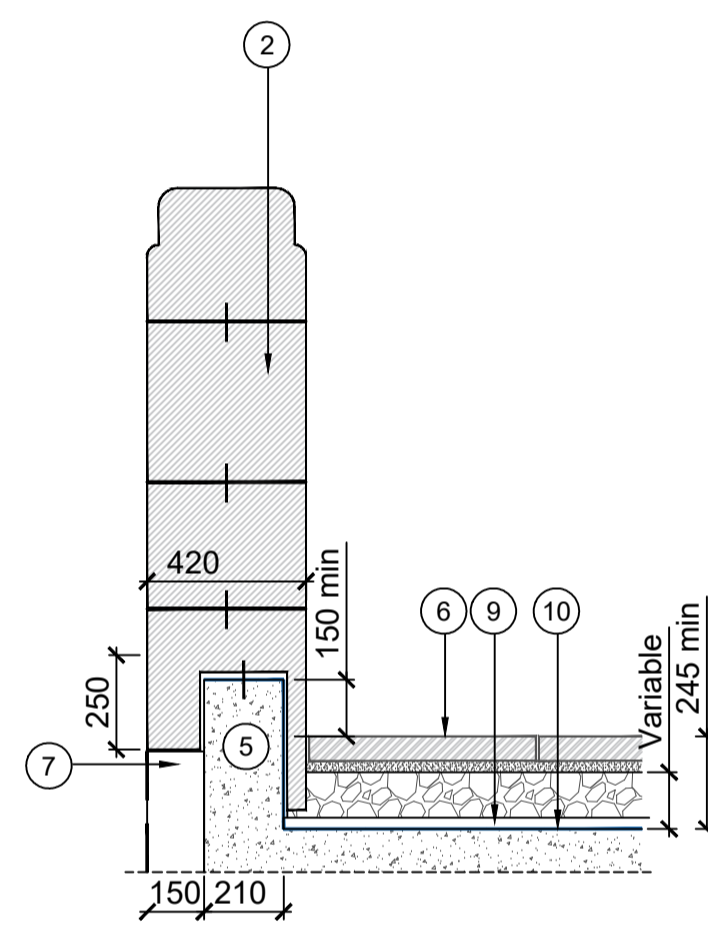
01 03005 W2b - Proposed Raked Retaining Wall with 1.1m High Balustrade & Stone Coping Elevation
Scale 1: 20 @A1



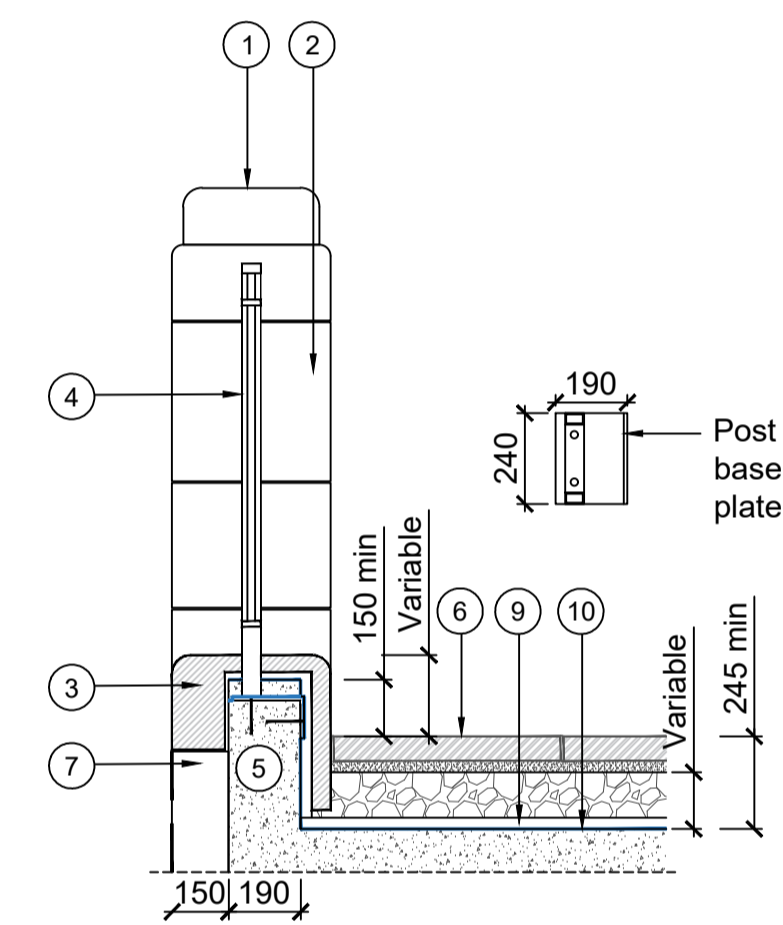
02 03005 W2b - Balustrade Section
Scale 1: 20 @A1



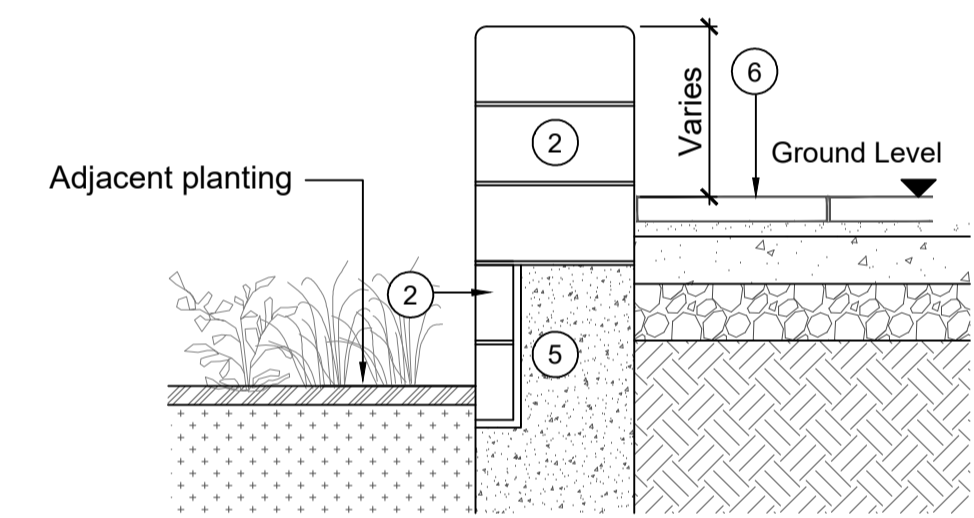
03 03005 W3 - Proposed Retaining Walls with Piers and Metal Cladding Elevation
Scale 1: 20 @A1



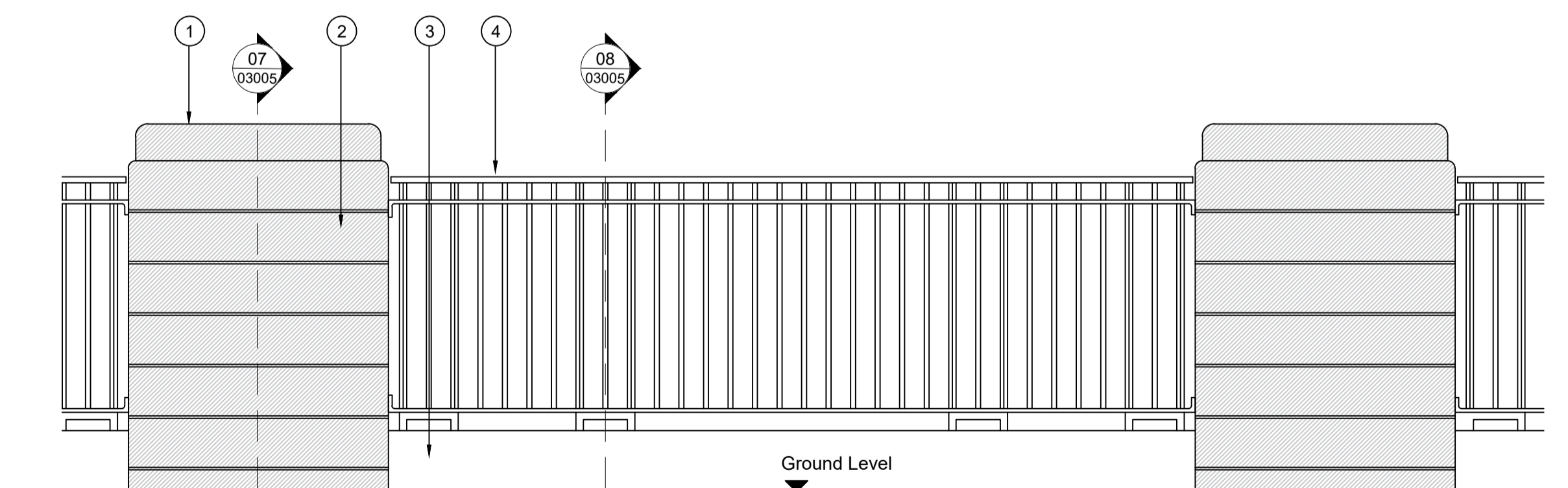
04 03005 W3 - Pier Section
Scale 1: 20 @A1



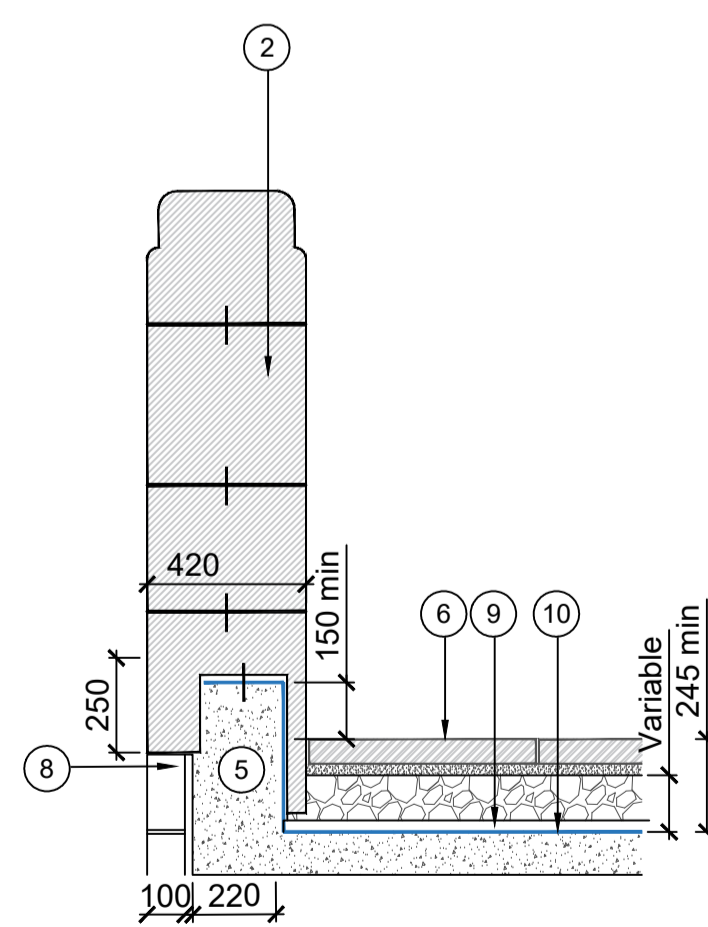
05 03005 W3 - Balustrade Section
Scale 1: 20 @A1



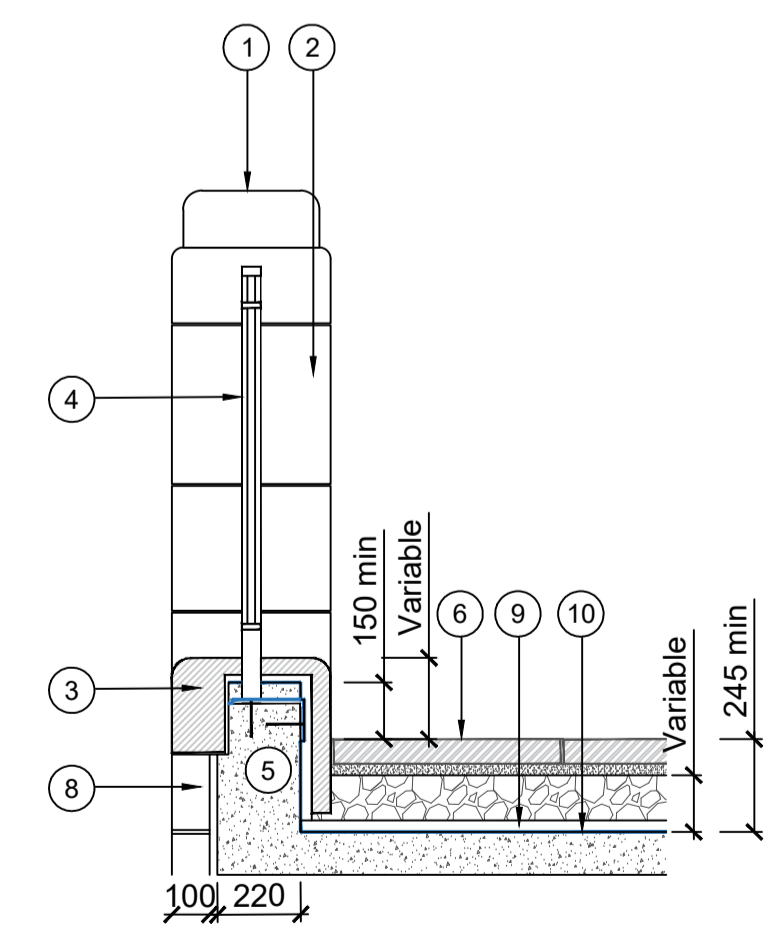
09 03004 W5 - Proposed Retaining Wall with Stone Cladding
Scale 1: 20 @A1



06 03005 W4 - Proposed Retaining Walls with Piers and Stone Cladding Elevation
Scale 1: 20 @A1



07 03005 W4 - Pier Section
Scale 1: 20 @A1



08 03005 W4 - Balustrade Section
Scale 1: 20 @A1

W2b - Refer to NBS Clause F21:110D
W3 - Refer to NBS Clause F21:110E
W4 - Refer to NBS Clause F21:110F
W5 - Refer to NBS Clause F21:110G

1. Stone pier cap to match existing
2. Stone pier to match existing
3. Coping stone
4. Proposed Balustrade (NBS Clause Q40:410)
5. Concrete retaining wall to Engineer's design
6. Adjacent paving details to IR40300-GIL-ZZ-XX-DR-L-03000 Typical Paving Details
7. Metal cladding to to Architects design
8. Proposed stone cladding
9. Drainage mat to Architect's information
10. Waterproofing to Architect's information

rev	details	by	date
P01	ISSUE FOR PLANNING	YH	22.08.2025
P02	Updated details and coding	YH	29.10.2025
P03	Updated section details	YH	12.11.2025
P04	STAGE 4 ISSUE	YH	03.12.2025
P05	Issued for Planning	SH	26.03.2026

Notes

- 1.0 Do not scale from drawing, use figured dimensions only
- 1.1 All dimensions to be checked onsite
- 1.2 This drawing to be read in conjunction with all other Gillespies drawings and specifications

Project title
**OUR CULTURAL HEART
PHASE 2**

Drawing title
**TYPICAL WALLS DETAILS
- Sheet 2 of 2**

Drawing number
IR40300-GIL-ZZ-XX-DR-L-03005

Drawing Status Revision
PLANNING P05

Date	Scale	Drawn	Checked
22.08.2025	1:20 @ A1	YH	JF

© copyright GILLESPIES LLP, all rights reserved

Client

Kirklees Council
Princess Alexandra Walk, Huddersfield
HD1 2RS

Gillespies

5th Floor, Phoenix House, 3 South Parade, Leeds, LS1 5DQ
P: 0113 247 0550 F: 0113 247 0550 E: design@kirklees.gillespies.co.uk