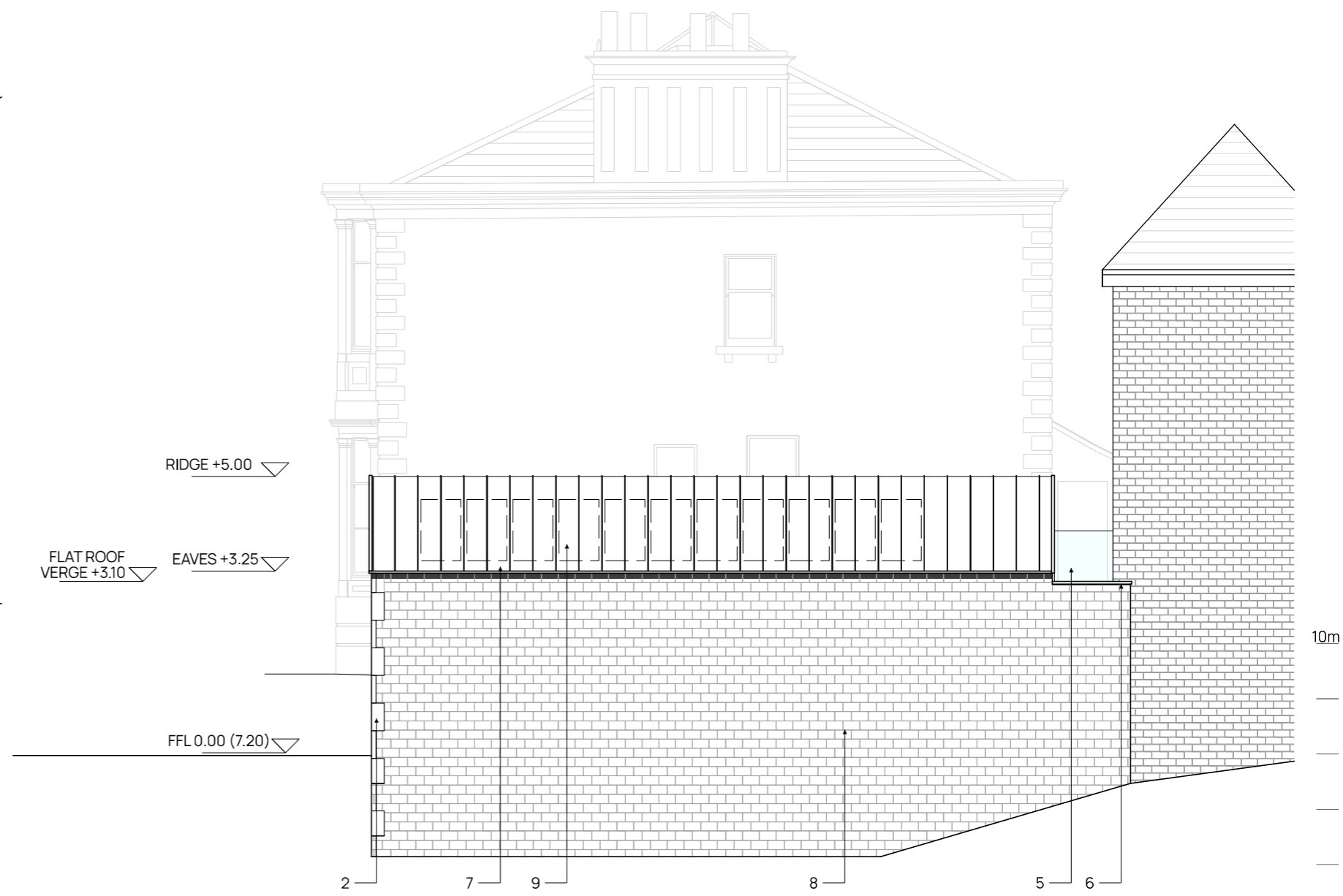


SOUTH (REAR) ELEVATION



WEST (SIDE) ELEVATION A

1. Existing bank/driveway reinstated to geotechnical engineers drawings
2. Smooth stone
3. Aluminium framed window/door col: light grey
4. Spiral staircase
5. Frameless glass balustrade
6. Stone coping or aluminium coping to match windows
7. Standing seam zinc roof
8. Stone to match existing
9. Indicative location of photovoltaic panels

rev	date	description			
Project <b>CELLAR CLOUGH HOUSE, MARSDEN</b>					
Title <b>ELEVATIONS AS PROPOSED</b>					
Project No	23-07	Drawing No	L(-4)021	Status	PLANNING
Scale	1:100@A3	Date	JULY 2023	Rev	01