

Existing Plan
Scale 1:100



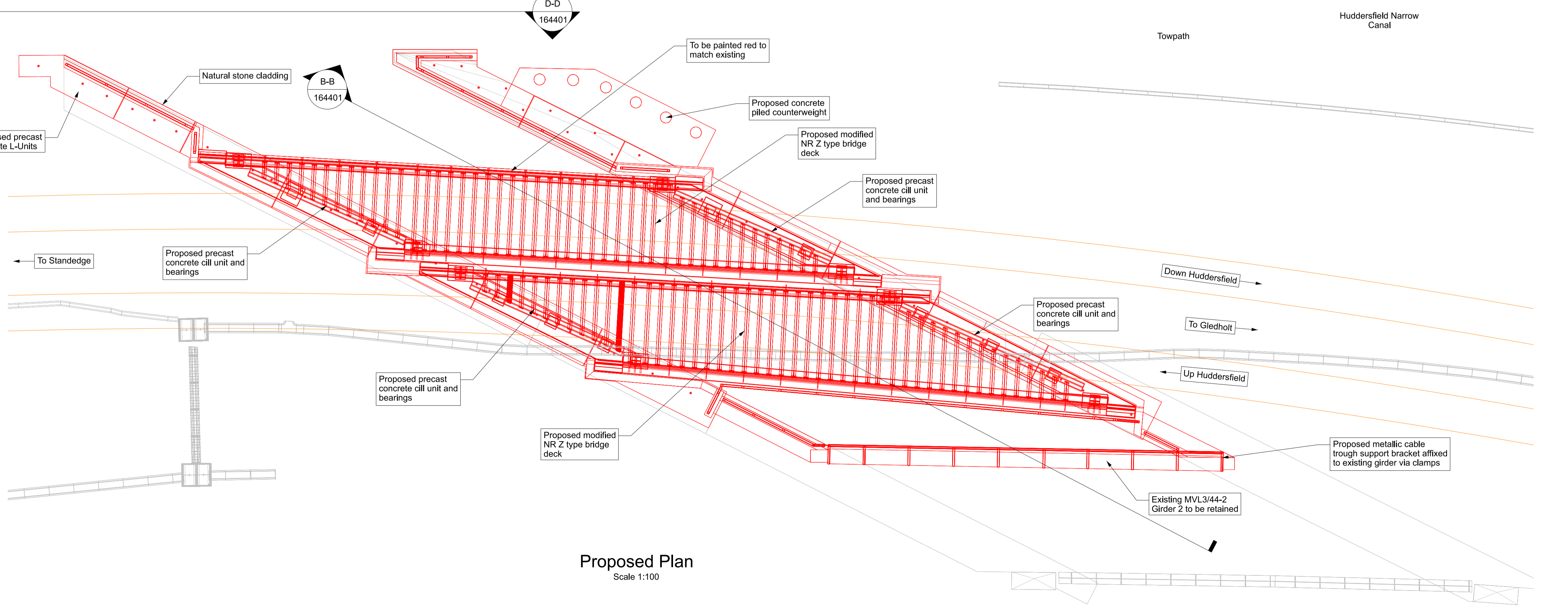
Aerial View
Scale N.T.S



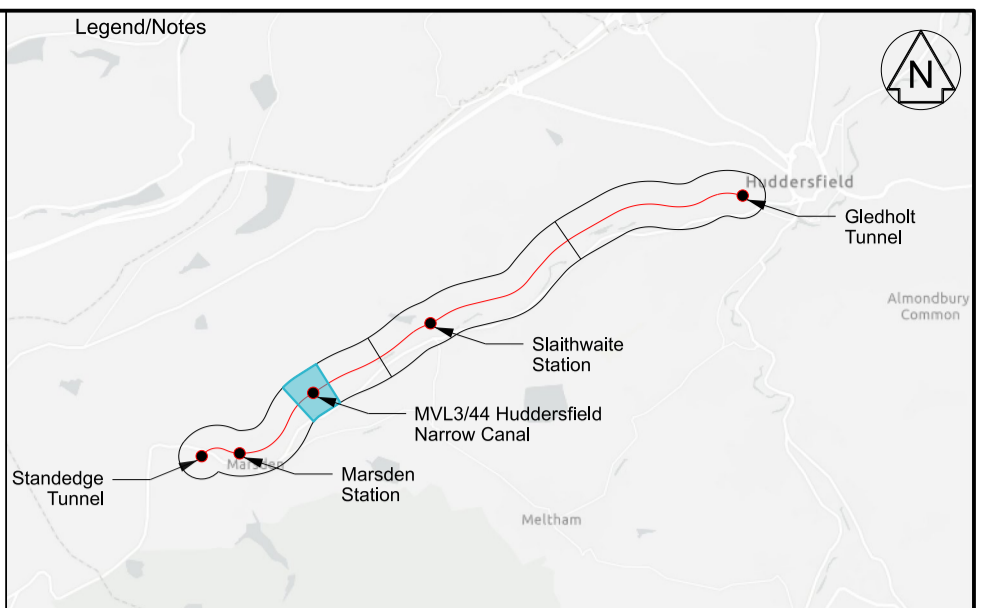
Photo 1
(Looking South East)
Scale N.T.S



Photo 2
(Looking North West)
Scale N.T.S

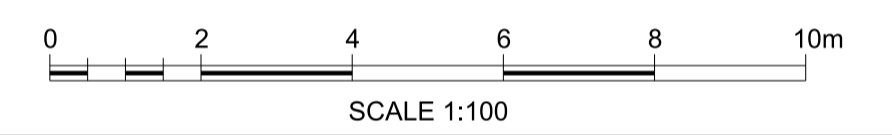


Proposed Plan
Scale 1:100



- Legend**
- Existing
 - Proposed
 - Other works not subject to Prior Approval
 - Network Rail Boundary

- Notes**
- All dimensions in millimetres unless shown otherwise. All levels in metres above ordnance datum Newlyn. Do not scale from this drawing.
 - This drawing shall be read in conjunction with the following drawings: 167037-TGP-54-MVL3-DRG-T-LP-164401



Rev	Date	Description of Revisions	Drawn	Chkd	Appr	Suitability
P01	23/01/26	First Issue				CB GM
P02	26/01/26	First Issue				AM GM TL
P03	19/02/26	Post Workshop Issue				AM GM TL

Fit for Information S2



Authorised	Signed	Date
Contractor(s) Tony Gee & Partners LLP		
Location STALYBRIDGE STN - HEATON LODGE JN (HUDD-MANC LINE)		
Type Drawings	Sub-type Planning	
Role Town and Country Planner	Sub-Role General	
Zone Marsden		
Phasing Proposed	Project Stage FACE 2 ES4	

Transpennine Route Upgrade

Contract No.
167037

Contract Title
2BC Stalybridge to Huddersfield

Drawing Title
**Prior Approval - MVL3/44
Huddersfield Narrow Canal
Existing and Proposed Plan**

Designed	Signed	Date
Drawn A. Murphy	Signed <i>Electronically Signed</i>	Date 19/02/26
Checked G. Mcsharry	Signed <i>Electronically Signed</i>	Date 19/02/26
Approved T. Lachut	Signed <i>Electronically Signed</i>	Date 19/02/26

Scale(s) As Shown	ELR & Mileage 18.0534	to	0
Alternative Reference			Sheet of
Drawing Number 167037-TGP-54-MVL3-DRG-T-LP-164400			Revision P03

Published

Published

Published

Published

Published

Published