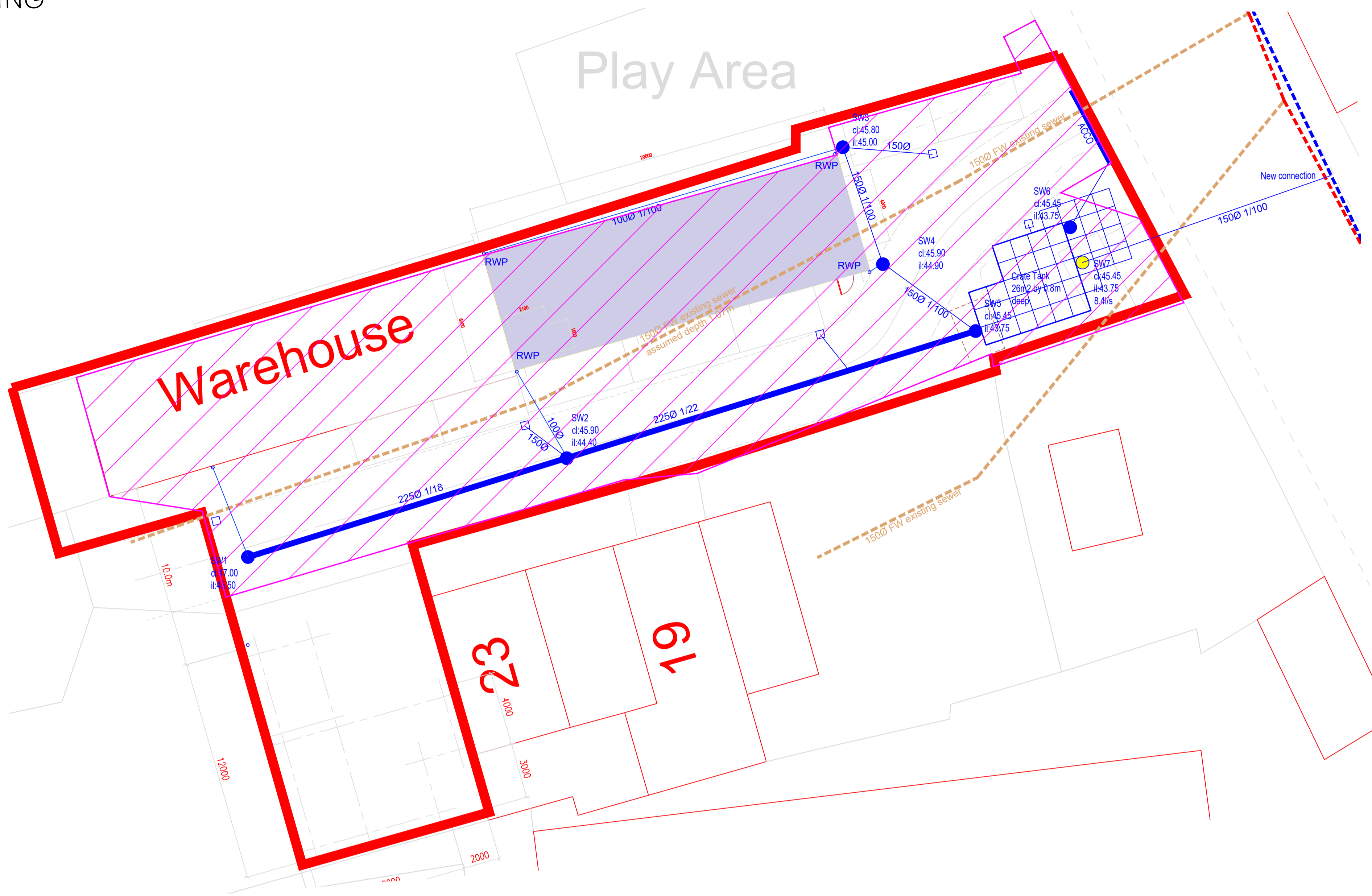


CONDITION DISCHARGE DRAWING



- KEY:**
- Road Gullies
 - Manhole Surface Water
 - Concrete Manhole Surface Water with hydrobrake 8.4l/s

Existing Public FW sewers within site boundary.
Sewer located under proposed building has YW build over agreement

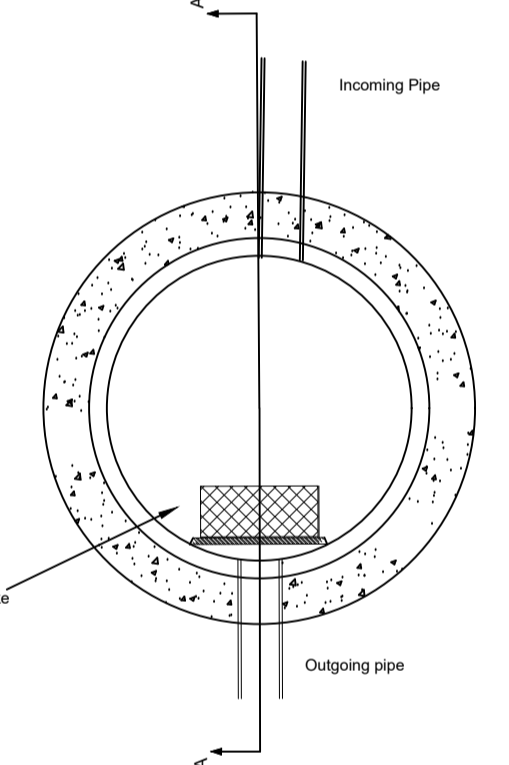
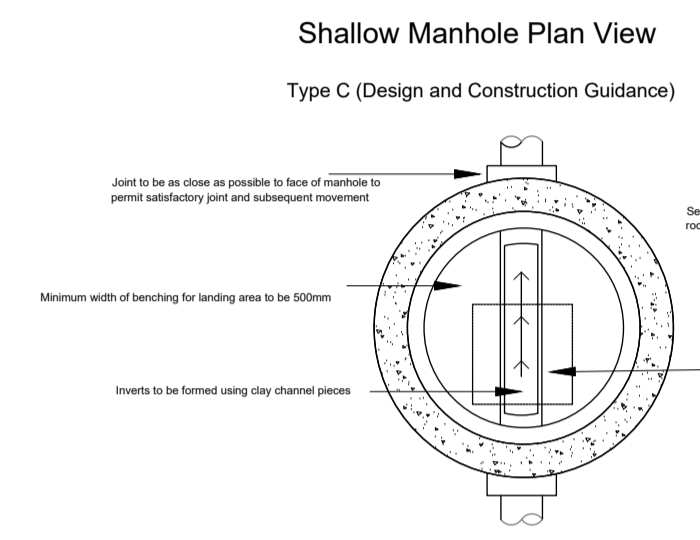
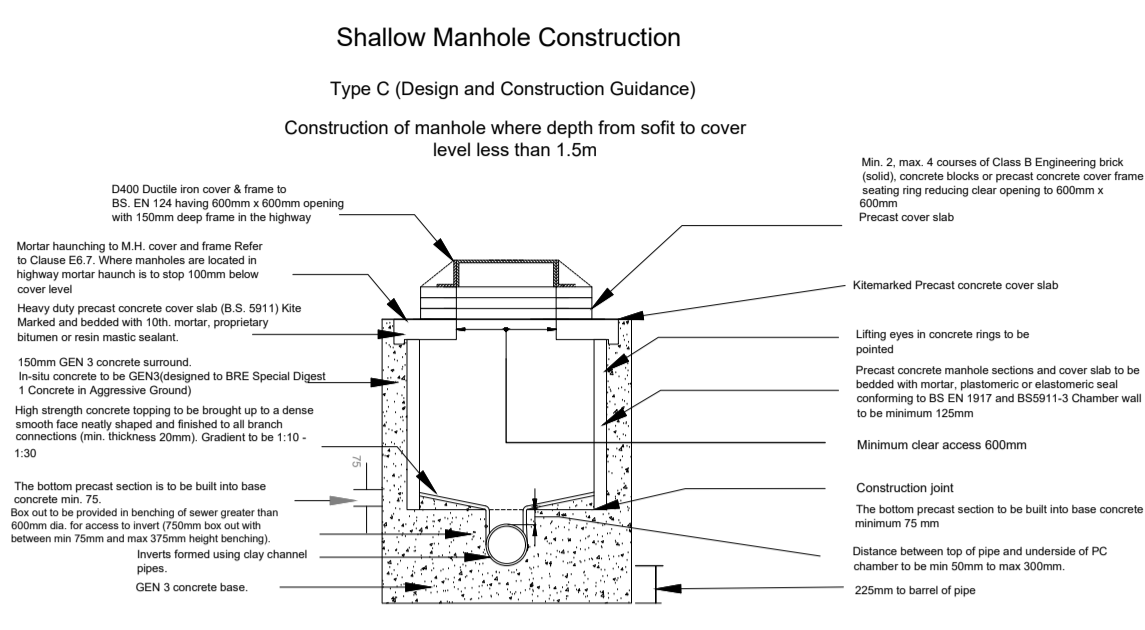
- Contributing roofed and paved 800m²
- Total Site Area 1016m²
- Attenuation using crate tank 2.6m² by 0.8m deep with minimum 0.8m cover.
Tank location and shape can be adjusted to suit

NOTES:

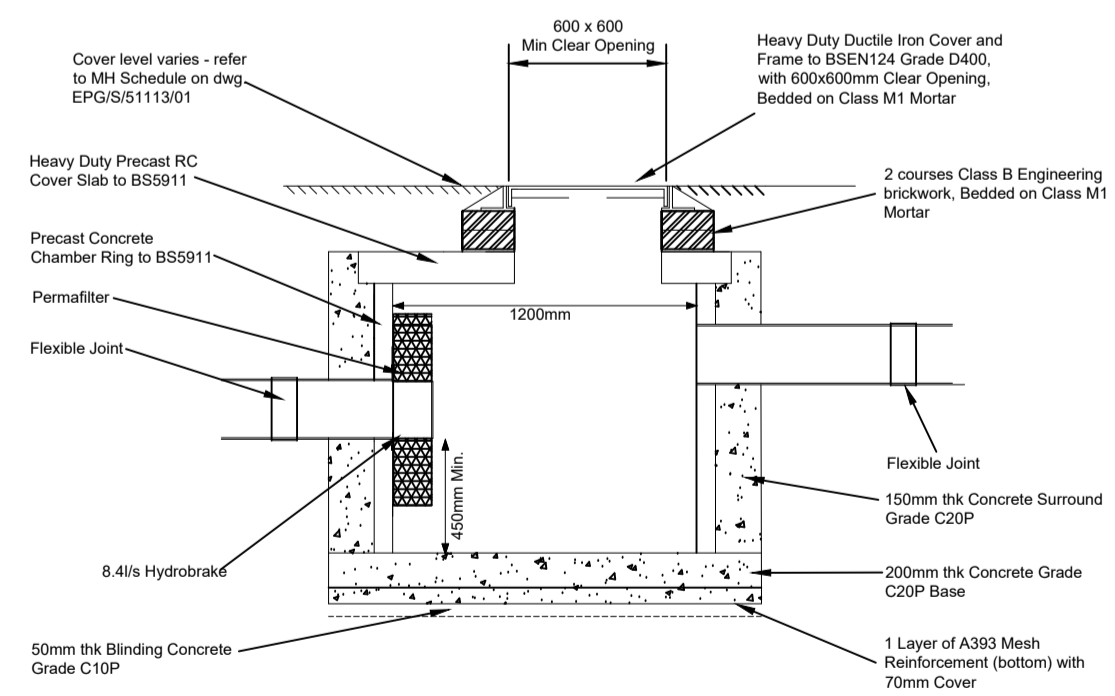
The existing site appears to drain into the foul sewer located within the site. The foul sewer is shown to be a public sewer the responsibility of Yorkshire Water.

The roofed and paved area within the site has an area of 0.102ha. Using Modified Rational Method the 1 year discharge rate of 1.2l/s has been calculated. A 30% reduction has been applied to give a restricted discharge of 8.4l/s. It is proposed that a new connection into the surface water sewer within Mill Road is provided to serve the development. Subsequently, attenuation has been provided in the form of a crate tank 2.6m² by 0.8m deep located within the low point of the site for 100yr+CC40% storm.

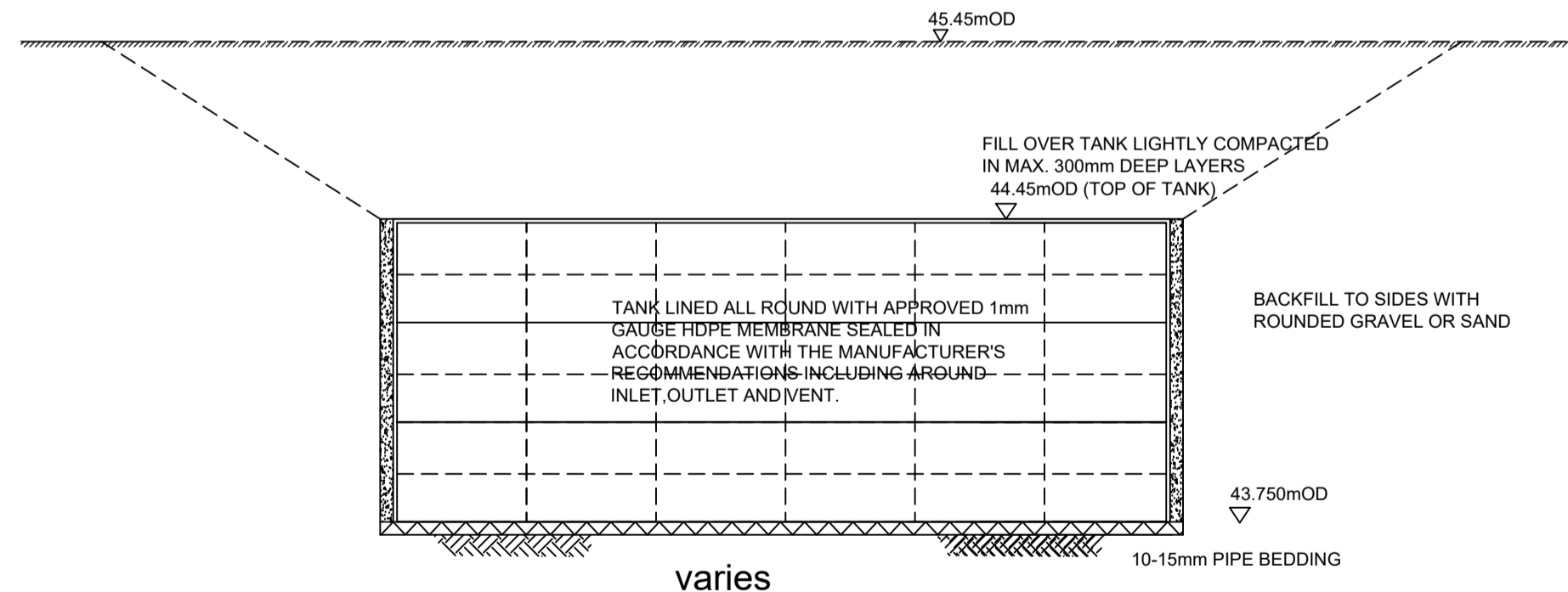
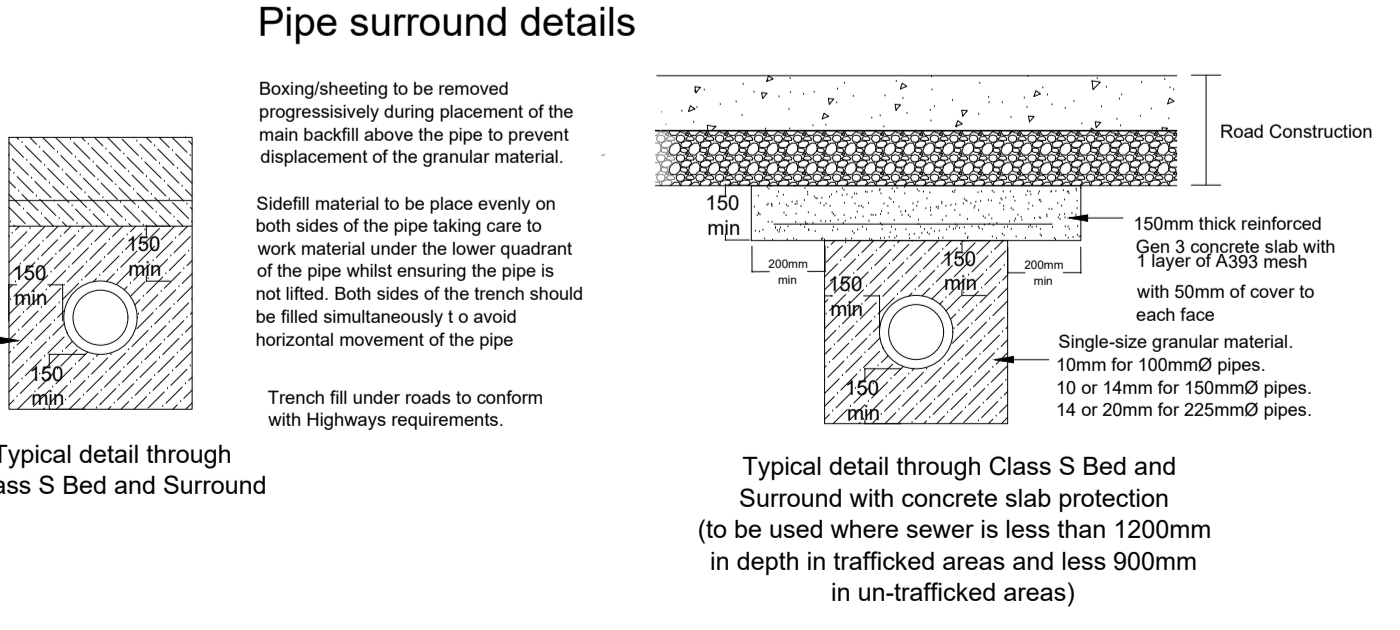
Existing sewer inverts to be verified before construction of SW and FW drainage.



TYPICAL 1200mm FLOW CONTROL CATCHPIT MANHOLE



TYPICAL 1200mm FLOW CONTROL CATCHPIT MANHOLE (SW7)
SECTION A-A SCALE 1:25



CRATE TANK1 - CROSS-SECTION (1:50)

MANHOLE REF.	PIPE OUTLET SIZE mm	PIPE MATERIAL	COVER LEVEL	INVERT LEVEL	DEPTH m	DEPTH to soffit	CHAMBER TYPE	CHAMBER SIZE mm	COVER TYPE	COVER SIZE mm	COMMENTS
SW1	225	Polys sewer	47.000	45.500	1.500	1.275	PPIC	600	D400	600	Limited Access
SW2	225	Polys sewer	45.900	44.400	1.500	1.275	PPIC	600	D400	600	Limited Access
SW3	150	Polys sewer	45.800	45.000	0.800	0.650	PPIC	600	D400	600	
SW4	150	Polys sewer	45.900	44.900	1.000	0.850	PPIC	600	D400	600	
SW5	225	Polys sewer	45.450	43.750	1.700	1.475	PPIC	600	D400	600	Limited Access+sump
SW6	150	Polys sewer	45.450	43.750	1.700	1.550	PPIC	600	D400	600	Limited Access+sump
SW7	150	Polys sewer	45.450	43.750	1.700	1.550	CONC	1200	D400	600	8.4l/s hydrobrake

REV	DESCRIPTION	DATE
0	For Approval/costing	17/09/24
A	FW sewer build over agreement	28/07/25
B	Building Removed imp area reduced	14/10/25

EWE Associates Limited
Windy Ridge Barn
Theaby Lane
Winterton
Scunthorpe
DN15 9TG
Tel: 07875 972270
Email: lea.favill@eweassociates.com

PROJECT
Development at Firths Yard
Mill Road Dewsbury

CLIENT
Mr Abdul Rehman

DRAWING TITLE
Drainage Layout & Details

SCALE
1:150

DATE
14/10/2025

DRAWN BY
LJF

CHECKED BY
JF

REVISION
B

DRAWING No
EWE/3146/01