

**Land off Hermitage Park, Lepton
Proposed Residential Development
Travel Plan**

December 2024 (Rev 1)

**Prepared on behalf of
Miller Homes**

Quality Management

Land off Hermitage Park, Lepton, Travel Plan Project No: 13015				
File reference	O:\Rowley Lane, Lepton\TEXT\REPORTS\Millers Docs\241204 Rowley Lane TP (Rev 1).docx			
Issue/revision	Initial Issue	Revision 1	Revision 2	Revision 3
Remarks	Draft	Final		
Date	25th November 2024	4th December 2024		
Prepared by	E Jones	E Jones		
Checked by	K Peel	K Peel		
Authorised by	M Whittaker	M Whittaker		

This document has been prepared for the exclusive use of the Client and unless otherwise agreed in writing by them or by Optima Highways and Transportation Ltd, no other party may use, make use of or rely on the contents of this document. This document cannot be assigned or transferred to any third party without the express written agreement of both Optima Highways and Transportation Ltd and the Client.



Contents

1. Introduction.....	2
2. Existing Site & Development Proposals.....	4
3. Objectives and Targets	6
4. Roles and Responsibilities	9
5. Monitoring and Review	10
6. Walking	12
7. Cycling.....	16
8. Public Transport.....	19
9. Other Measures.....	25
10. Action Plan.....	28

IMAGES

Image 1.1 Site Location (Strategic).....	2
Image 2.1 Indicative Site Boundary.....	4
Image 3.1 Kirklees 046 MSOA	7
Image 3.2 Summary of Census Mode Splits.....	7
Image 6.1 Public Right of Way Map Extract.....	12
Image 6.2 Pedestrian Accessibility	13
Image 7.1 Cycle Accessibility	16

TABLES

Table 4.1 TPC Contact Details.....	9
Table 4.2 Travel Plan Measure 1 – Appoint Travel Plan Co-ordinator	9
Table 5.1 Travel Plan Measure 2 – Undertake Travel Surveys.....	10
Table 5.2 Travel Plan Measure 3 – Monitoring and Review	11
Table 6.1 Travel Plan Measure 4 – Pedestrian Connections.....	14
Table 6.2 Travel Plan Measure 5 – PRow Upgrade.....	14
Table 6.3 Travel Plan Measure 6a – Travel Information Leaflet & Newsletters (Pedestrians)	14
Table 6.4 Travel Plan Measure 7 – National and Local Events.....	15
Table 6.5 Walking Useful Links	15
Table 7.1 Travel Plan Measure 6b - Travel Information Leaflet and Newsletters (Cycling).....	17
Table 7.2 Travel Plan Measure 8 – Cycle Storage	17
Table 7.3 Travel Plan Measure 9 – Cycling Challenges / Competitions	17
Table 7.4 Cycling Useful Links	18
Table 8.1 Bus Stop Provision	19
Table 8.2 Bus Service Summary – Rowley Lane Westbound	20
Table 8.3 Bus Service Summary – Rowley Lane Eastbound	20
Table 8.4 Bus Service Summary – Penistone Road Northbound	21
Table 8.5 Bus Service Summary – Penistone Road Southbound	21
Table 8.6 Bus Service Summary – Highgate Lane Northbound.....	22
Table 8.7 Bus Service Summary – Highgate Lane Southbound.....	22
Table 8.8 Indicative Journey Times	23
Table 8.9 Rail Service Summary	23
Table 8.10 Travel Plan Measure 6c - Travel Information Leaflet and Newsletters (Public Transport)	23



Table 8.11 Public Transport Useful Links	24
Table 9.1 Travel Plan Measure 10 – Car Sharing.....	25
Table 9.2 Travel Plan Measure 11 – Car Club.....	25
Table 9.3 Travel Plan Measure 12 – School Travel.....	25
Table 9.4 Travel Plan Measure 13 – Home Delivery	25
Table 9.5 Travel Plan Measure 14 – Home Working.....	26
Table 9.6 Travel Plan Measure 15 – Personalised Travel Planning.....	26
Table 9.7 Travel Plan Measure 16 – EV Charging.....	26
Table 9.8 Travel Plan Measure 17 – Sustainable Travel Plan Fund Contribution	26
Table 10.1 Action Plan.....	28

FIGURES

- Figure 1 Site Location – Strategic
- Figure 2 Site Location – Local
- Figure 3 Pedestrian Accessibility
- Figure 4 Cycle Accessibility

APPENDICES

- Appendix A Site Layout Plan D

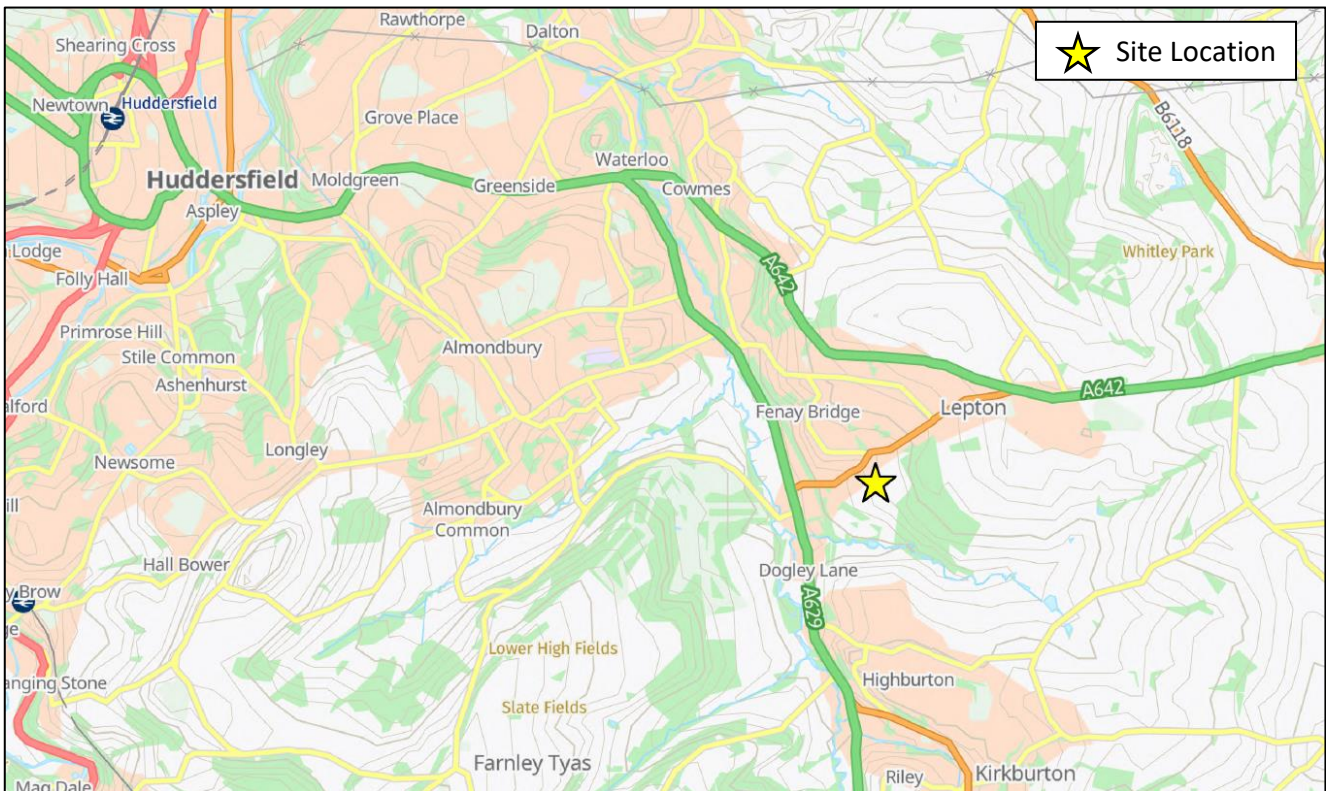


1. Introduction

1.1.1 This Travel Plan (TP) has been undertaken by Optima as part of a variation of plans which have been approved under an existing outline planning application for the Phase 1A development of 80 residential dwellings on land off Hermitage Park, Lepton on behalf of Miller Homes. This TP has been prepared as part of Condition 32, of planning application ref: 2022/60/91735/W, as detailed within this section.

1.1.2 The Site in relation to the strategic and local transport network is shown on Figures 1 and 2 respectively and an extract of Figure 1 is shown in Image 1.1 which illustrates the strategic location.

Image 1.1 Site Location (Strategic)



1.1.3 The Site is located within Kirklees Council (KC) which as a unitary authority, is responsible for both planning and highways.

1.1.4 A Travel Plan (TP) is a package of measures tailored to the needs of individual developments, aimed at promoting greener, cleaner travel choices and reducing the reliance on the car. It involves the development of a set of mechanisms, initiatives and targets that together can enable a development to reduce the impact of travel and transport on the environment, whilst also achieving a number of other benefits for residents.

1.1.5 This document provides details of the measures to be incorporated into the overall design of the development and outlines the obligations on Miller Homes to encourage residents to use sustainable modes of transport along with a range of initiatives to be adopted to encourage the use of sustainable modes.



Site Background

1.1.6 The Site is allocated for housing development in the Kirklees Local Plan Allocations and Designations document adopted on 27th February 2019 under site reference HS3 'Land to the south east of Hermitage Park, Lepton'. The overall Site has an estimated capacity of 312 dwellings.

1.1.7 A TP was prepared by Optima in January 2021, which has been listed as a Framework Travel Plan. Outline Planning Permission was granted in November 2023, planning reference: 2022/60/91735/W, of which Condition 32 was listed as follows:

Three months prior to the occupation of any of the hereby approved dwellings, a Full Travel Plan for the site, produced in accordance with the Framework Travel Plan ref. 13015 Rev. 3 by Optima, dated the 13th of January 2021, has been submitted to and approved in writing by the Local Planning Authority. The Full Travel Plan shall include:

- *Measures, objectives and targets for reduced car usage and increased non-car transport usage, including modal split targets;*
- *The provision of Travel Plan Co-ordinator including roles, responsibilities, annual monitoring, and contact details;*
- *The provision of travel Information;*
- *Implementation and review timescale; and*
- *Enforcement, sanctions and corrective / review mechanisms.*

The measures contained within the Travel Plan shall be implemented in accordance with the approved timescale, except where the monitoring evidence demonstrates that a revised timescale/measures to achieve trip targets are necessary, in which case the revised details would be implemented.

Reason: *To promote sustainable methods of travel, in accordance with Policy LP21 of the Kirklees Local Plan.*

1.1.8 This TP includes the requirements set out within Condition 32.

1.1.9 Following the introduction, this TP contains the following:

- Chapter 2 – describes the Site and summarises the development proposals;
- Chapter 3 – defines the Travel Plan objectives and targets;
- Chapter 4 – describes the Travel Plan Coordinator role;
- Chapter 5 – sets out the monitoring and review process;
- Chapter 6 – describes the walking facilities, accessibility and measures;
- Chapter 7 – describes the cycling facilities, accessibility and measures;
- Chapter 8 – describes the public transport facilities, accessibility and measures;
- Chapter 9 – details all other Travel Plan measures; and
- Chapter 10 – sets out the initial Action Plan.



2. Existing Site & Development Proposals

2.1 DEVELOPMENT PROPOSALS

2.1.1 The development proposals, which are illustrated on the JRP Site Layout Plan D drawing contained at Appendix A can be summarised as follows:

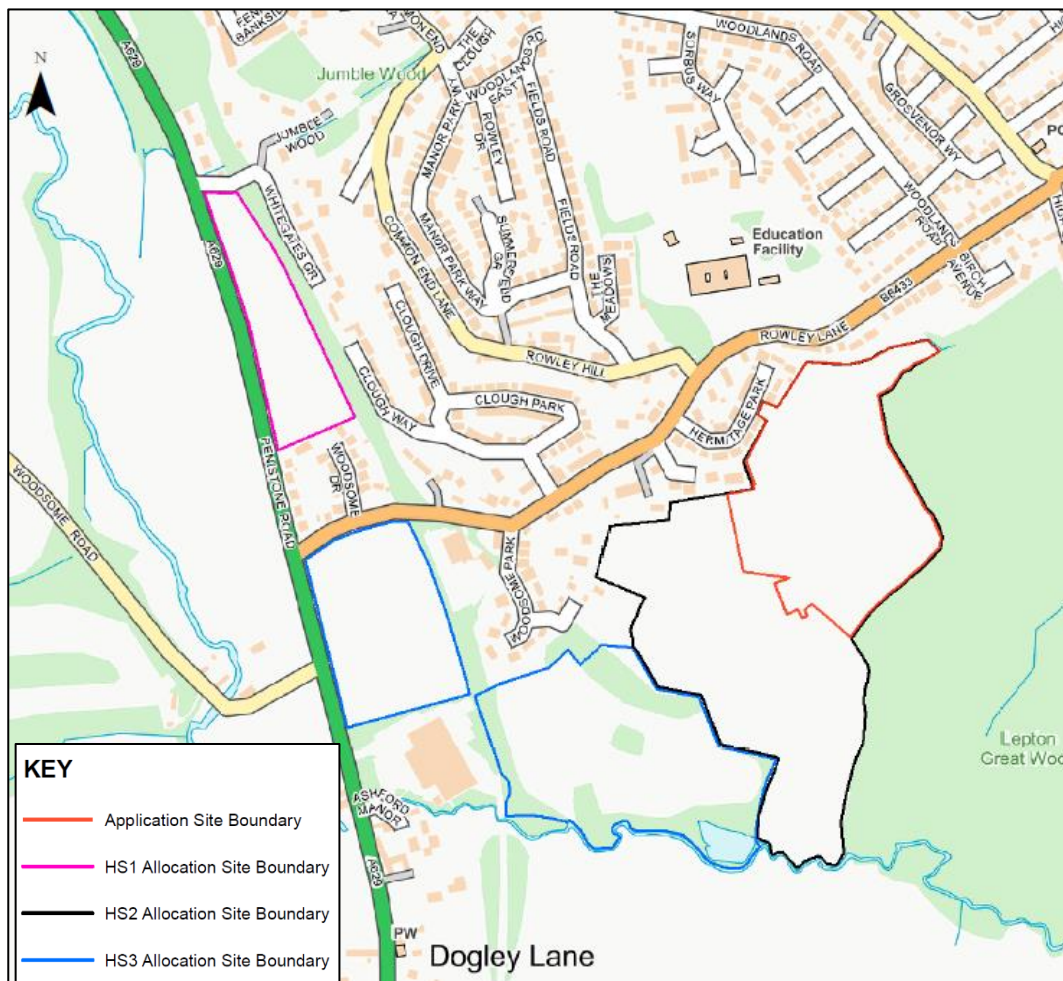
- Erection of 80 residential dwellings comprising of 2, 3 and 4 bedroom properties.
- Access via Hermitage Park; and
- Associated parking, landscaping and infrastructure.

2.2 EXISTING SITE

2.2.1 The Site is located on land to the south of the B6433 Rowley Lane, approximately midway along its length. As set out within Chapter 1, the Site is designated for housing within the Kirklees Local Plan adopted in February 2019 under Site reference HS3.

2.2.2 The application Site has an approximate area of 4.9 hectares (12.1 acres) and is located in Lepton, approximately 5.1km southwest of Huddersfield and 2.3km north of Kirkburton. The Site in relation to the strategic transport networks is shown on Figure 1. Figure 2 illustrates the application boundary and extents of allocations, HS1, HS2 and HS3, an extract of which is provided within Image 2.1.

Image 2.1 Indicative Site Boundary



2.2.3 The Site incorporates several agricultural fields and is bound by Lepton Great Wood to the east, further agricultural land to the south and west and existing housing served from Rowley Lane and Hermitage Park to the north. The Site has an 18m wide frontage onto Hermitage Park to the north-western corner of the Site.

2.2.4 Land to the west of the Site, which extends to the A629 Penistone Road is allocated for housing under Site allocation reference HS2 'Land adjacent to Penistone Road/Woodsome Park, Lepton'.

2.3 PEDESTRIAN/CYCLE ACCESS STRATEGY

2.3.1 Pedestrian/cycle access will be provided from the proposed vehicular junction onto Hermitage Park.

2.3.2 The 2.0m internal Site Access footways will connect with the existing footways on Hermitage Park. This ensures that residents from the Site can access the bus stops on Rowley Lane as well as the local facilities beyond.



3. Objectives and Targets

3.1 TRAVEL PLAN OBJECTIVES

3.1.1 This Travel Plan shall, by containing appropriate measures, help to improve the environment by seeking to reduce the number of trips made to and from the development by the private car. All residents shall be made aware of the measures included within the Travel Plan in order that positive benefits can be delivered, and the number of trips undertaken by public transport, walking or cycling are increased.

3.1.2 The overall objectives for the development are:

- Promoting walking, cycling and public transport as the primary modes of travel;
- To deliver mode shift from car journeys to alternative modes including multi-occupancy vehicle trips;
- To reduce vehicle emissions through the take up of alternative transport modes; and
- To deliver education and promotion of walking and cycling as options for a healthier lifestyle.

3.2 TRAVEL PLAN TARGETS

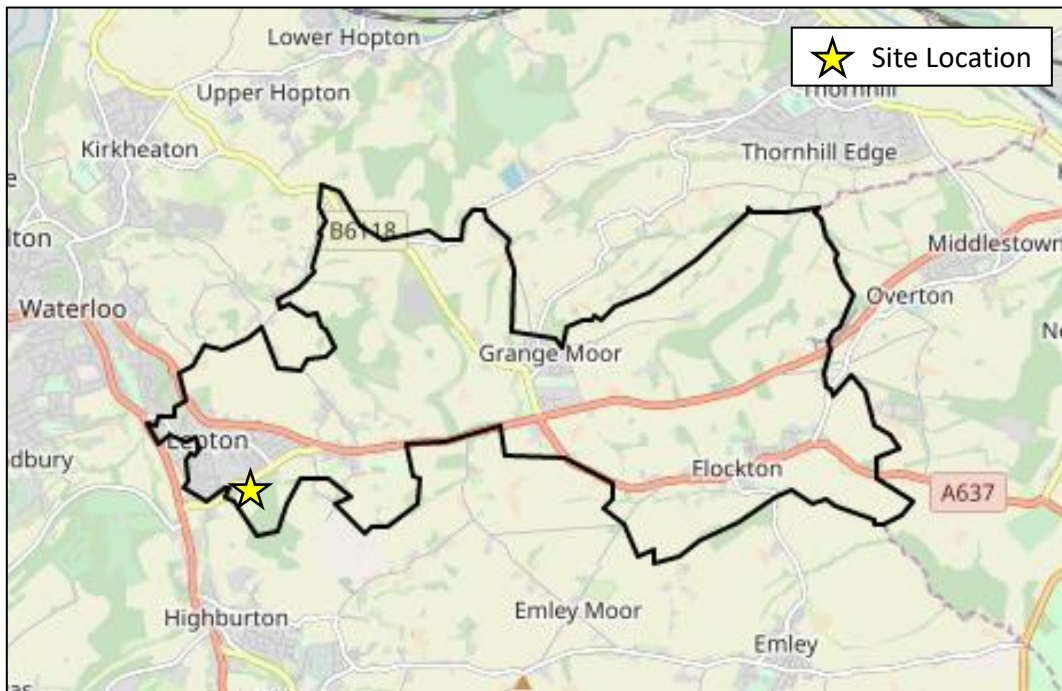
3.2.1 Overarching targets are to be set once baseline travel surveys have been carried out (as described within Chapter 5). Targets set for the Travel Plan will need to be 'SMART' i.e. they must be:

- **S**ite-specific;
- **M**easurable;
- **A**chievable;
- **R**ealistic; and
- **T**ime related.

3.2.2 In order to provide initial Site specific targets, modal split information has been obtained from National Statistics census data (2011) which provides an indication of existing residential journey to work mode split data for the local area. The proposed development is located within super output area (mid layer) (MSOA) Kirklees 046 as illustrated in Image 3.1.



Image 3.1 Kirklees 046 MSOA



3.2.3 Journey to work mode split data for the Kirklees 046 MSOA is summarised in Image 3.2.

Image 3.2 Summary of Census Mode Splits

Method of Travel to Work	Percentage
Work Mainly at or From Home	0%
Train / Tram	2%
Bus, Minibus or Coach	7%
Taxi	0%
Motorcycle, Scooter or Moped	1%
Driving a Car or Van	79%
Passenger in a Car or Van	6%
Bicycle	0%
On Foot	5%
Other	0%
Total	100.0%

3.2.4 The Census mode split indicates that **79%** of residents in the Kirklees 046 MSOA drive in a car or van for their journey to work with **6%** being a passenger in a car or van. Assuming on average 1.2 passengers per vehicle, this equates to **70.3%** single occupancy cars and vans.

3.2.5 The initial targets are set out below and these are to be met within 5 years from first occupation:

- 10% reduction in 51.6% driving in a car without any passengers = **63.5%**
- For any school trips, the target is for a maximum of **20%** of school children to be taken to school by car where that is the sole purpose of the journey.



3.2.6 The above interim targets will be reviewed and confirmed within 3 months following the first travel surveys.

3.2.7 These targets will be reviewed, expanded and confirmed within 3 months following the initial travel survey. These or other targets set shall not be omitted or changed by the Travel Plan Coordinator without prior consultation with KC.



4. Roles and Responsibilities

4.1 INTRODUCTION

4.1.1 An important aspect of a successful TP is the allocation of sufficient time and resources to enable it to happen. This can in part be achieved by the recognition from the outset of the roles and responsibilities of those who will be involved.

4.2 TRAVEL PLAN CO-ORDINATOR

4.2.1 Miller Homes will appoint a Travel Plan Coordinator (TPC) prior to first occupation of the development. Once appointed the TPC will inform KC of the date that this work commenced and provide a contact name and details. In the interim, Optima will act as TPC and the contact details are as shown in Table 4.1.

Table 4.1 TPC Contact Details

Travel Plan Coordinator	
Name	Kate Peel
Address	Suite 1, 3 rd Floor, Goodbard House, Infirmary Street, Leeds, LS1 2JP
Email	Kate.peel@optimghighways.com
Phone	0113 245 1679

4.2.2 The developer will be responsible for paying the Travel Plan Monitoring Fee to the Council as per the S106.

4.2.3 The duties of the TPC will include:

- Implementation of the TP;
- Acting as a single point of contact across the development for all transport, access and travel related issues;
- Obtaining and providing residents/visitors with up to date details of information relating to access to the Site via sustainable modes; and
- Liaison with KC and other key stakeholders such as public transport operators.

Table 4.2 Travel Plan Measure 1 – Appoint Travel Plan Co-ordinator

Travel Plan Measure – TPM1	
Summary	Appoint a Travel Plan Coordinator.
Guideline Timescale	6 months prior to first occupation and retained for 5 years.
Notes	To implement, oversee and manage the Travel Plan.
Responsibility	Miller Homes.



5. Monitoring and Review

5.1.1 A successful Travel Plan must have an appropriate monitoring and review programme that measures success (and failure) and reinvigorates the process where necessary.

5.2 QUESTIONNAIRE SURVEY

5.2.1 A critical element of the information gathering exercise for the Travel Plan is to carry out a questionnaire survey of the residents. This will provide details of individual circumstances, travel patterns and preferences etc. The survey also increases the residents' awareness of travel issues.

5.2.2 A full travel survey of residents will take place within 12 months of first occupation, or from 50% occupation, whichever is sooner. A minimum response rate of 35% will be targeted and a prize draw will be offered to assist in meeting this target for responses.

5.2.3 The results of the survey will be provided to KC within 3 months of the survey taking place and will be compared against the interim targets set out within Chapter 3.

5.2.4 The survey will be undertaken using an online questionnaire software such as 'SurveyMonkey' and this will be facilitated by providing residents with a QR code to access the survey.

Table 5.1 Travel Plan Measure 2 – Undertake Travel Surveys

Travel Plan Measure - TPM2	
Summary	Undertake a resident Questionnaire survey to provide a baseline and inform initial targets
Guideline Timescale	Within 12 months of first occupation, or 50% occupation, whichever is sooner
Notes	To record travel patterns and inform targets
Responsibility	Travel Plan Coordinator

5.3 MONITORING AND ANNUAL REVIEW

5.3.1 The Travel Plan will be monitored on an annual basis during the appointment of the developer TPC, which will include a full survey of all residents.

5.3.2 Within 6 months of the annual review the TPC shall agree the following TP items with the KC:

- Any revised site specific measures to reduce the numbers of car-borne trips; and
- Any revisions to the modal split targets for the residents as a result of carrying out the surveys.

5.3.3 The annual monitoring report will also review the progress that has been achieved in implementing measures against the modal shift targets over the preceding twelve month period. Any progress made will be reported by the TPC to the relevant external organisations including KC, and public transport operators where appropriate.

5.3.4 Following the annual monitoring report the TP will be reviewed as appropriate and any further actions/measures will be identified and implemented to progress and if necessary improve the TP to meet objectives and targets. This review should be undertaken in consultation with KC and any other relevant stakeholders. Potential secondary measures/actions could include the following for which the TPC would be responsible:



- Arrange for a local cycle shop to provide a troubleshooting/maintenance day on selected weekends through the year. Promotion of this through marketing would be coordinated by the TPC;
- Seek to arrange a discount for residents at a local cycle store. Promotion of this through marketing would be coordinated by the TPC; or
- Seek to arrange a discount for residents at a local running/sportswear store to try and increase the number of people walking/running to local services/employment.

Table 5.2 Travel Plan Measure 3 – Monitoring and Review

Travel Plan Measure – TPM3	
Summary	Monitoring and Review
Guideline Timescale	Annually during Developer TPC appointment
Notes	To monitor Travel Plan performance
Responsibility	Travel Plan Coordinator

5.4 MAINTAINING INTEREST

5.4.1 In order for the TPC to maintain interest in the TP there are a few key points that will help assist in ensuring that people are not discouraged. These are as follows:

- Ensure that measures implemented work, this will maintain confidence in the Travel Plan;
- Ensure that there is regular communication to keep the Travel Plan issues in people's minds;
- Easily contactable assistance will be available to seek to solve any problems they have in changing mode;
- Make sure information provided to staff is always up to date; and
- Develop a successful feedback mechanism.



6. Walking

6.1 EXISTING PEDESTRIAN FACILITIES

6.1.1 Lit footways are provided along Rowley Lane and Hermitage Park. The footways vary in width between 1.8m and 2.1m. The existing footways provide connections to the bus stops along Rowley Lane, Rowley Lane Junior Infant & Nursery School and Rowley Hill Club.

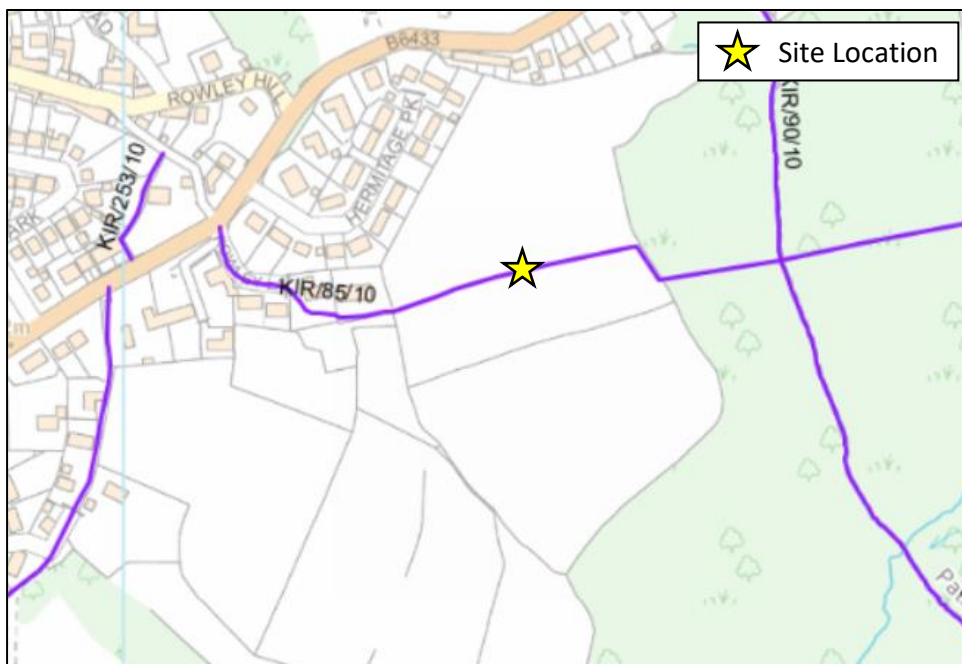
6.1.2 Public footpath KIR/85/10 runs in a west to east alignment for circa 429m through the development site. Footpath KIR/85/10 connects to Footpath KIR/85/20, KIR/90/10 and KIR/90/20 at its eastern terminus and to a private drive south of Hermitage Park at its western terminus.

6.1.3 The Public footpath KIR/253/10 is situated to the northwest of the development site and provides a pedestrian connection from Rowley Lane to an unnamed road connected to Rowley Hill.

6.1.4 Another Public Right of Way Footpath located in close proximity to the site is Footpath KIR/65/10 which has a north to south alignment and runs for approximately 709m, to the west of the development site. Footpath KIR/65/10 is connected to Rowley Lane at its northern terminus and to two other footpaths at its southern terminus, forming a pedestrian connection from Rowley Lane to Kirkburton village.

6.1.5 An extract of the Kirklees Public Right of Way map is provided within Image 6.1.

Image 6.1 Public Right of Way Map Extract



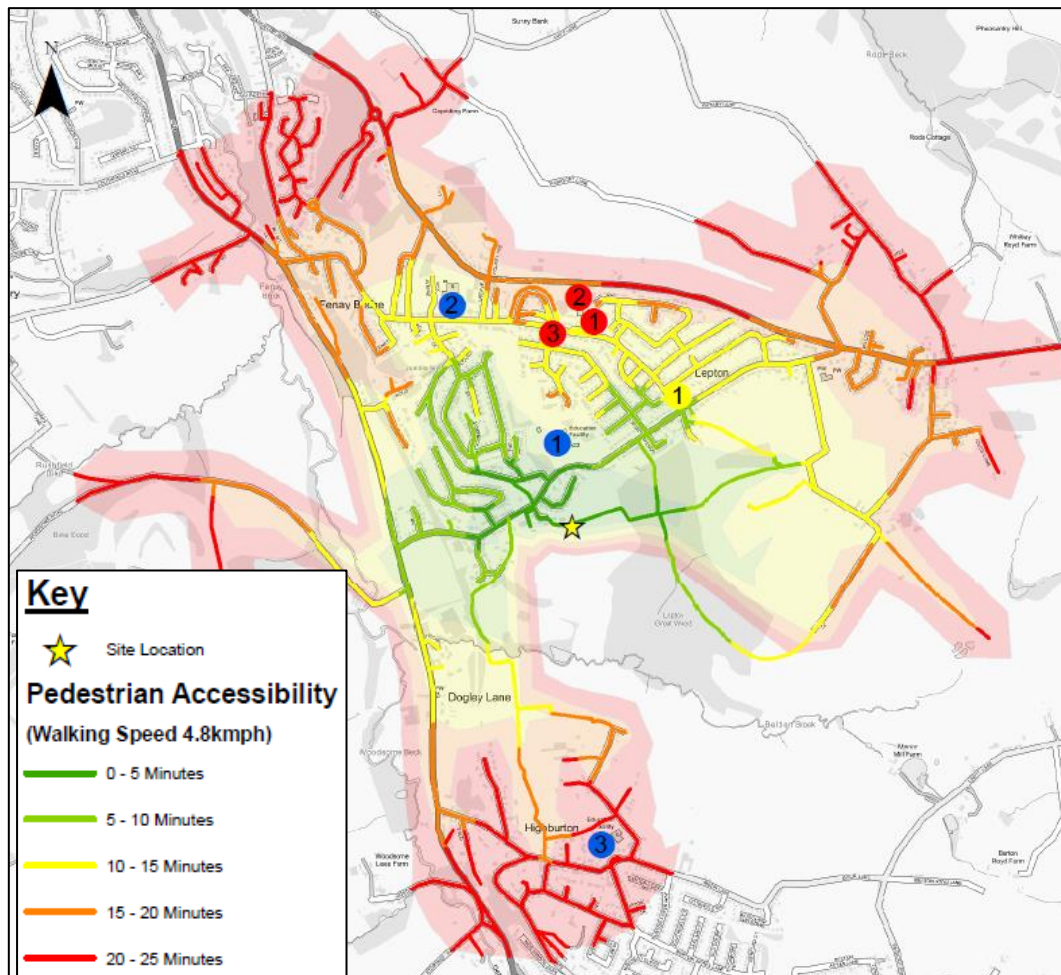
6.2 ACCESSIBILITY ON FOOT

6.2.1 The residential design guide 'Manual for Streets' (MfS) advises that “walkable neighbourhoods are typically characterised by having a range of facilities within ten minutes (up to about 800m) walking distance of residential areas...” (ref para 4.4.1). However, this is not regarded as an upper limit in MfS and reference is also made to walking offering “the greatest potential to replace short car trips, particularly those under 2km”. The acceptability of walking trips up to 2km, for commuting purposes, (an approximate 25 minutes' walk time) is also supported in the Chartered Institution of Highways and Transportation (CIHT) document 'Providing for Journeys on Foot', 2000.

6.2.2 The Department for Education (DfE) statutory guidance document, 'Home to School Travel and Transport', July 2014, defines an even greater maximum walking distance to schools of 2 miles (3.2km) and 3 miles (4.8km) for children under and over 8 years respectively.

6.2.3 Using GIS Network Analyst software typical walk times (up to 25 mins) from the centre of the development are shown on Figure 3. An extract of Figure 3 is provided within Image 6.2.

Image 6.2 Pedestrian Accessibility



6.2.4 Figure 3 (Image 6.2) demonstrates that the Site is within walking distance of the centre of both Lepton and Fenay Bridge.

6.2.5 The following key facilities can be accessed on foot:

- Shops and facilities (including Lepton GP surgery, Pharmacy and Dental Surgery) within Lepton can be walked within 14 minutes;



- Rowley Lane Junior Infant & Nursery school can be walked in under 5 minutes;
- Lepton CE Junior and Infant School can be walked in 15 minutes;
- Bus stops along Rowley Lane can be walked in under 5 minutes;
- Bus stops along the A629 Penistone Road, close to the Rowley Lane/Penistone Road junction, can be walked within 10 minutes;
- Bus stops at Highgate Lane can be walked within 10 minutes; and
- Bus stops along the A642 Wakefield Road can be walked within 20 minutes.

6.2.6 The existence of internal links, pedestrian routes and public rights of way will positively influence trips on foot.

6.3 WALKING MEASURES

Table 6.1 Travel Plan Measure 4 – Pedestrian Connections

Travel Plan Measure – TPM4	
Summary	Pedestrian connection to Hermitage Park and existing PRoW.
Guideline Timescale	Prior to first occupation.
Notes	To improve connectivity.
Responsibility	Miller Homes.

Table 6.2 Travel Plan Measure 5 – PRoW Upgrade

Travel Plan Measure - TPM5	
Summary	Upgrade PRoW KIR/85/10 within the site boundary, as shown on the site layout plan D at Appendix A.
Guideline Timescale	Detailed within Condition 6.
Notes	To encourage trips on foot.
Responsibility	Miller Homes.

Table 6.3 Travel Plan Measure 6a – Travel Information Leaflet & Newsletters (Pedestrians)

Travel Plan Measure – TPM6a	
Summary	Production and distribution of a Travel Information Leaflet including key pedestrian routes and destinations, as well as health benefits of walking and mention of walking groups. Followed by newsletters throughout the year with updated information.
Guideline Timescale	Prior to occupation.
Notes	To encourage trips on foot.
Responsibility	TPC to produce and distribute the leaflet, followed by newsletters.



Table 6.4 Travel Plan Measure 7 – National and Local Events

Travel Plan Measure – TPM7	
Summary	National and Local events such as 'Walk to Work day' (April 1 st) will be promoted in communication through newsletters.
Guideline Timescale	Ongoing.
Notes	To encourage trips on foot.
Responsibility	TPC to include in the newsletters.

6.4 USEFUL LINKS

Table 6.5 Walking Useful Links

Walking Weblinks	
Kirklees Public Rights of Way Map	www.kirklees.gov.uk/beta/countryside-parks-and-open-spaces/Search-for-public-rights-of-way.aspx
Kirklees walking routes	www.kirklees.gov.uk/beta/food-exercise-and-sport/search-for-walking-and-cycling-routes/
Walk 4 Life	https://walk4life.info
Ramblers	www.ramblers.org.uk



7. Cycling

7.1 EXISTING CYCLE FACILITIES

7.1.1 National Cycle Network Route 627 starts in Kirkburton and runs through Shepley and Millhouse Green before connecting to the Trans Pennine Trail. Although it does not run through Lepton, it starts off the B6116 North Road which is easily accessible from the Site, as it is within a 10-minute cycle ride. The route is 23.5 miles long on local roads through villages and joins the Trans Pennine Trail at Millhouse Green.

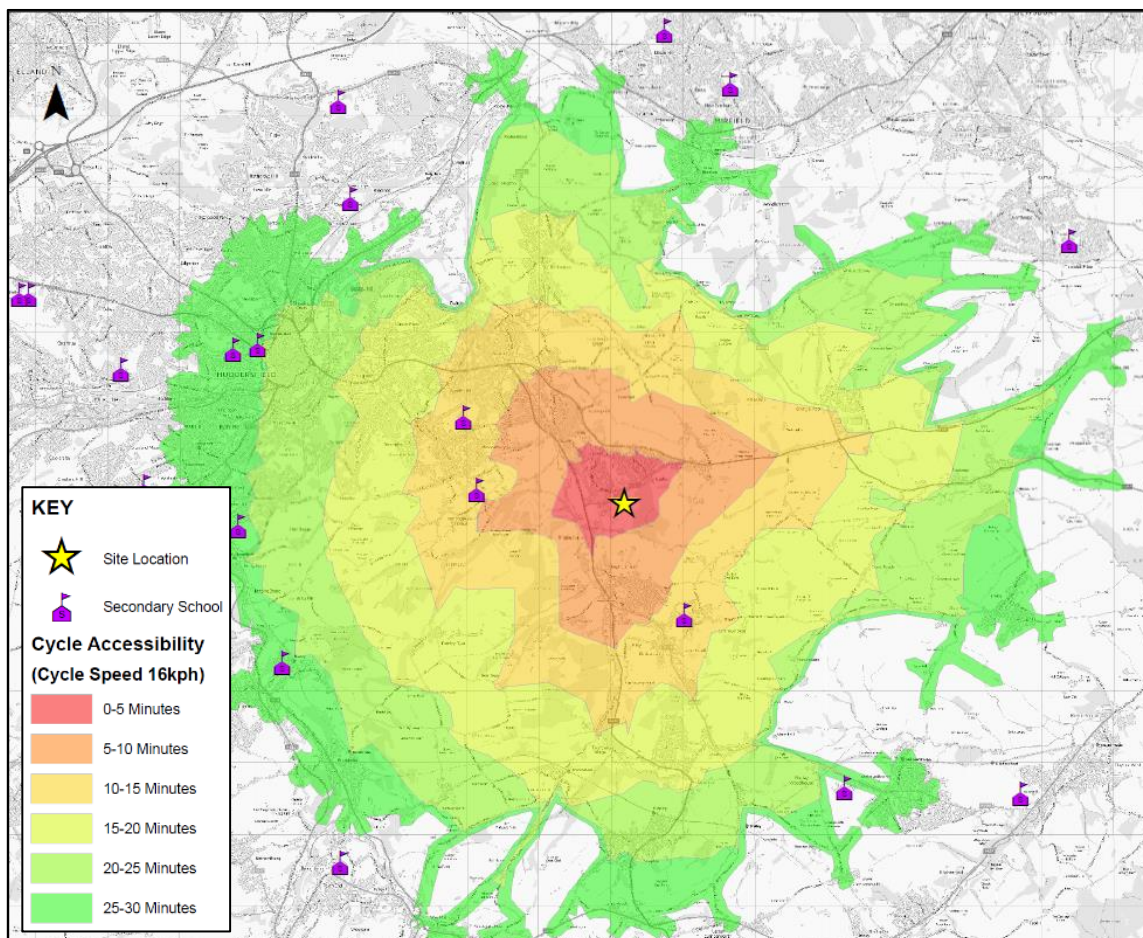
7.2 CYCLE ACCESSIBILITY

7.2.1 An acceptable and comfortable distance for general cycling trips is considered to be up to 5km as referred to in Local Transport Note 2/08 (published by the Department for Transport). However, the same guidance also refers to commuting cycle trips up to 8km.

7.2.2 Whilst LTN 1/20, Cycle Infrastructure Design, July 2020, has replaced LTN 2/08 and has resulted in it being withdrawn, LTN 1/20 does not contain definitive recommended maximum cycling distances and therefore there is no reason to suggest that these distances are not still applicable.

7.2.3 Using GIS Network Analyst software typical cycle times (with 30 mins approximating to 8km distance) from the Site are shown on Figure 4 an extract of which is provided within Image 7.1.

Image 7.1 Cycle Accessibility



7.2.4 Figure 4 (Image 7.1) shows that:

- Rowley Lane Junior Infant & Nursery School, Lepton C.E Junior, Infant & Nursery School and Highburton C of E Voluntary Controlled First School can be cycled within 5 minutes;
- Retail and employment opportunities within Kirkburton can be cycled within 15 minutes;
- Kirkburton Middle School is located within a 15-minute cycle journey;
- Southgate Secondary School and King James’s School Huddersfield are both located within a 25-minute cycle journey;
- Stocksmoor Railway Station can be cycled within 20 minutes; and
- Retail and employment opportunities within Huddersfield and surrounding places such as Almondbury and Kirkheaton can be reached within a 25-minute cycle ride.

7.2.5 It is therefore concluded that the proposed development is accessible by bicycle.

7.3 CYCLE MEASURES

Table 7.1 Travel Plan Measure 6b - Travel Information Leaflet and Newsletters (Cycling)

Travel Plan Measure – TPM6b	
Summary	Production and distribution of a Travel Information Leaflet including key cycling routes and destinations, as well as health benefits of cycling and mention of cycling groups. Followed by newsletters throughout the year with updated information.
Guideline Timescale	Prior to occupation.
Notes	To encourage trips by cycle
Responsibility	TPC to produce and distribute the leaflet, followed by newsletters.

Table 7.2 Travel Plan Measure 8 – Cycle Storage

Travel Plan Measure – TPM8	
Summary	Provide cycle storage in the form of garages or sheltered storage area in the garden.
Guideline Timescale	Prior to occupation.
Notes	Provision of safe, dry and secure cycle storage at the home.
Responsibility	Miller Homes.

Table 7.3 Travel Plan Measure 9 – Cycling Challenges / Competitions

Travel Plan Measure – TPM9	
Summary	Cycling challenges / competitions will be promoted such as Love to Ride where prize draws are used.
Guideline Timescale	Ongoing.
Notes	These can either be within teams or taking part in national challenges such as ‘Cycle to Work day’.
Responsibility	TPC to include in the newsletters.



7.4 USEFUL LINKS

Table 7.4 Cycling Useful Links

Cycle Weblinks	
Kirklees cycle routes	www.kirklees.gov.uk/beta/food-exercise-and-sport/cycling.aspx
Tax Free Bike Scheme	www.gov.uk search 'cycle to work'
Bike and Go	www.bikeandgo.co.uk
Cycle Streets	www.cyclestreets.net
National cycle events	www.bikeweek.org.uk



8. Public Transport

8.1 BUS SERVICES

8.1.1 The nearest bus stops to the Site are located along the B6433 Rowley Lane, adjacent to the Hermitage Park junction, some 300m from the centre of the Site.

8.1.2 Further bus stops are located along B6433 Rowley Lane, A629 Penistone Road and Highgate Lane offering additional high frequency services.

8.1.3 A summary of the bus stop provision is provided within Table 8.1.

Table 8.1 Bus Stop Provision

Bus Stop Reference	Location	Direction	Distance from Site centre	Facilities	Buses towards	Services
45018785	Rowley Lane/Hermitage Park	Westbound	315m	Bus stop pole and timetable information	Denby Dale, King James School, Kirkburton School & Penistone Road	D2, K77, K78, K79, K80, K89 & S11
45018786	Rowley Lane/Hermitage Park	Eastbound	320m	Bus stop pole and timetable information	Huddersfield, Cowmes, Grange Moor, Waterloo Road, Ivy Green & Bradley St Thomas Gardens	D2, K77, K78, K80, K89 & K98
45016775	Penistone Road/Rowley Lane	Northbound	830m	Bus shelter, bus flag, timetable information	Waterloo, Huddersfield, Lepton Station Road, Cooper Bridge, Kirkheaton, Penistone Road & Rowley Lane J & I School	80, D1, D3, K79, K81, K86, K87 & S11
45016774	Penistone Road/Rowley Lane	Southbound	780m	Bus flag and timetable information	Denby Dale, King James' School and Kirkburton School	D1, D2, D3, K77, K78, K79, K80, K86, K87, K89
45018795	Highgate Lane/Highgate Avenue	Southbound	1km	Bus stop and timetable information	Wakefield, Denby Dale, King James' School, Lepton Station Road and Kirkburton School	231, 232, D2, K79, K80, K89
45018794	Highgate Lane/Rowley Lane	Northbound	930m	Bus stop and timetable information	Huddersfield, Waterloo Road, Ivy Green & Bradley St Thomas Gardens	231, 232, D2, K80, K89 & K98

8.1.4 A summary of the bus services in the vicinity of the Site are provided in Table 8.2 – 8.7.



Table 8.2 Bus Service Summary – Rowley Lane Westbound

Service	Buses Towards	Operator	Days of Operation	Approximate One-way Frequency	Time of Operation
D2	Denby Dale	Team Pennine	Monday – Friday	6 buses per day	07:56 – 17:39
			Saturday	6 buses per day	08:15 – 17:15
K77	King James' School	First West Yorkshire Ltd	Monday – Friday	1 bus per day	07:58
K78	King James' School	Team Pennine	Monday – Friday	1 bus per day	07:57
K79	King James' School	First West Yorkshire Ltd	Monday – Friday	1 bus per day	07:59
	Lepton Station Road		Monday – Friday	1 bus per day	15:23
K80	King James' School	First West Yorkshire Ltd	Monday – Friday	1 bus per day	08:07
K89	Kirkburton School	First West Yorkshire Ltd	Monday – Friday	1 bus per day	08:42
S11	Penistone Road	First West Yorkshire Ltd	Monday – Friday	1 bus per day	15:31

Table 8.3 Bus Service Summary – Rowley Lane Eastbound

Service	Buses Towards	Operator	Days of Operation	Approximate One-way Frequency	Time of Operation
D2	Huddersfield	Team Pennine	Monday – Friday	5 per day	08:00 – 16:37
			Saturday	5 per day	08:14 – 16:15
			Sunday	N/A	Not in operation
K77	Cowmes	First West Yorkshire Ltd	Monday - Friday	1 bus per day	15:17
			Saturday	N/A	Not in operation
			Sunday	N/A	Not in operation
K78	Grange Moor	Team Pennine	Monday - Friday	1 bus per day	15:17
			Saturday	N/A	Not in operation
			Sunday	N/A	Not in operation
K80	Waterloo Road	First West Yorkshire Ltd	Monday - Friday	1 per day	15:13
			Saturday	N/A	Not in operation
			Sunday	N/A	Not in operation
K89	Ivy Green	First West Yorkshire Ltd	Monday - Friday	1 bus per day	15:47
			Saturday	N/A	Not in operation
			Sunday	N/A	Not in operation
K98	Bradley St Thomas Gardens	First West Yorkshire Ltd	Monday - Friday	1 bus per day	16:08
			Saturday	N/A	Not in operation
			Sunday	N/A	Not in operation



Table 8.4 Bus Service Summary – Penistone Road Northbound

Service	Buses Towards	Operator	Days of Operation	Approximate One-way Frequency	Time of Operation
80	Waterloo	First West Yorkshire Ltd	Monday – Friday	1 per day	15:28
D1	Huddersfield	Team Pennine	Monday – Friday	3 per hour	05:43 – 23:24
			Saturday	2 per hour	06:34 – 23:23
			Sunday	1 per hour	09:20 – 23:24
D3	Huddersfield	Team Pennine	Monday – Friday	7 per day	07:04 – 18:42
			Saturday	6 per day	09:23 – 18:22
K79	Lepton Station Road	First West Yorkshire Ltd	Monday – Friday	1 per day	15:15
K81	Cooper Bridge	Team Pennine	Monday – Friday	1 per day	15:14
K86	Kirkheaton	First West Yorkshire Ltd	Monday – Friday	1 per day	15:13
K87	Kirkheaton	First West Yorkshire Ltd	Monday – Friday	1 bus per day	15:12
S11	Penistone Road	First West Yorkshire Ltd	Monday – Friday	1 per day	15:34
	Rowley Lane J & I School		Monday – Friday	1 per day	08:15

Table 8.5 Bus Service Summary – Penistone Road Southbound

Service	Buses Towards	Operator	Days of Operation	Approximate One-way Frequency	Time of Operation
D1	Denby Dale	Team Pennine	Monday - Friday	2 per hour	06:01 – 23:02
			Saturday	2 per hour	07:06 – 23:01
			Sunday	1 per hour	10:06 – 23:02
D2	Denby Dale	Team Pennine	Monday - Friday	6 per day	07:57 – 17:40
			Saturday	1 per hour	08:16 – 17:16
D3	Denby Dale	Team Pennine	Monday - Friday	6 per day	06:49 – 18:29
			Saturday	5 per day	09:09 – 18:07
K77	King James' School	First West Yorkshire Ltd	Monday - Friday	1 per day	08:00
K78	King James' School	Team Pennine	Monday - Friday	1 per day	08:00
K79	King James' School	First West Yorkshire Ltd	Monday - Friday	1 per day	08:00
K86	King James' School	First West Yorkshire Ltd	Monday - Friday	1 per day	08:07
K80	King James' School	First West Yorkshire Ltd	Monday - Friday	1 per day	08:08
K87	King James' School	First West Yorkshire Ltd	Monday - Friday	1 per day	08:04
K89	Kirkburton School	First West Yorkshire Ltd	Monday - Friday	1 per day	08:43



Table 8.6 Bus Service Summary – Highgate Lane Northbound

Service	Buses Towards	Operator	Days of Operation	Approximate One-way Frequency	Time of Operation
231	Huddersfield	Arriva Yorkshire	Monday – Friday	1 per hour	06:01 – 22:01
			Saturday	1 per hour	07:01 – 22:01
			Sunday	Every 2 hours	10:01 – 22:01
232	Huddersfield	Arriva Yorkshire	Monday – Friday	1 per hour	06:31 – 21:01
			Saturday	1 per hour	08:03 – 21:01
			Sunday	Every 2 hours	09:01 – 21:01
D2	Huddersfield	Team Pennine	Monday – Friday	Every 2 hours	08:02 – 16:39
			Saturday	Every 2 hours	08:16 – 16:17
K80	Waterloo Road	First West Yorkshire Ltd	Monday - Friday	1 per day	15:14
			Saturday	N/A	Not in operation
K89	Ivy Green	First West Yorkshire Ltd	Monday - Friday	1 per day	15:49
K98	Bradley St Thomas Gardens	First West Yorkshire Ltd	Monday - Friday	1 per day	16:09

Table 8.7 Bus Service Summary – Highgate Lane Southbound

Service	Buses Towards	Operator	Days of Operation	Approximate One-way Frequency	Time of Operation
231	Wakefield	Arriva Yorkshire	Monday – Friday	1 per hour	05:15 – 21:45
			Saturday	1 per hour	07:59 – 21:45
			Sunday	Every 2 hours	09:45 – 21:45
232	Wakefield	Arriva Yorkshire	Monday – Friday	1 per hour	06:46 – 22:45
			Saturday	1 per hour	08:59 – 22:45
			Sunday	1 per hour	10:45 – 22:45
D2	Denby Dale	Team Pennine	Monday – Friday	6 per day	07:55 – 17:38
			Saturday	Every 2 hours	08:14 – 17:14
K79	King James' School	First West Yorkshire Ltd	Monday - Friday	1 per day	07:58
	Lepton Station Road		Monday - Friday	1 per day	15:20
K80	King James' School	First West Yorkshire Ltd	Monday - Friday	1 per day	08:05
K89	Kirkburton School	First West Yorkshire Ltd	Monday - Friday	1 per day	08:41

8.1.5 As can be seen from Tables 8.2 – 8.7 the existing bus services provide regular journeys to major employment, retail, health, leisure and education facilities within the surrounding areas of Huddersfield.

8.2 BUS ACCESSIBILITY

8.2.1 The centre of the development is located some 300m from the bus stops along Rowley Lane.

8.2.2 Further bus stops offering additional services are situated within a 10-minute walk along both Penistone Road and Highgate Lane.

8.2.3 Indicative bus journey times to local destinations are summarised within Table 8.8.



Table 8.8 Indicative Journey Times

Destination	Estimated Journey Time
Morrison's food store Waterloo	8 minutes
M&S Foodhall	9 minutes
Huddersfield	23 minutes
Denby Dale	29 minutes

8.3 RAIL ACCESSIBILITY

8.3.1 The nearest Station is Stocksmoor Railway Station which is located approximately 3.8km to the south of the development off Station Road.

8.3.2 Stocksmoor Railway Station is located on the Penistone line which provides regular connections to major destinations such as Huddersfield, Penistone, Barnsley and Sheffield, operated by Northern Trains. Huddersfield Station provides further direct trains to Leeds, Manchester and Hull.

8.3.3 Stocksmoor Railway Station can be accessed by bus (service D1) or a 20-minute cycle journey, where there is a bicycle store facility.

8.3.4 A summary of the available services is contained within Table 8.9.

Table 8.9 Rail Service Summary

Route	Monday to Saturday Frequency		Sunday Frequency
	Daytime	Late Evening	
Huddersfield – Sheffield (Penistone Line)	10	10	13

*additional peak hour services

8.3.5 A summary of typical journey times by train from Stocksmoor Railway Station can be found below:

- Huddersfield - 19 minutes; and
- Sheffield – 1hr 2 minutes.

8.4 PUBLIC TRANSPORT MEASURES

Table 8.10 Travel Plan Measure 6c - Travel Information Leaflet and Newsletters (Public Transport)

Travel Plan Measure – TPM6c	
Summary	Production and distribution of a Travel Information Leaflet including key stops, routes and destinations, as well as public transport trackers and timetables. Followed by newsletters throughout the year with updated information.
Guideline Timescale	Prior to occupation.
Notes	To encourage trips by public transport.
Responsibility	TPC to produce and distribute the leaflet, followed by newsletters.



8.5 USEFUL LINKS

Table 8.11 Public Transport Useful Links

Cycle Weblinks	
Bus timetable information	www.wymetro.com/buses/bus-timetables/
Your Next Bus	www.wymetro.com/buses/your-next-bus/
Journey planner	www.wymetro.com/plan-a-journey/
Useful Travel Apps	www.wymetro.com/plan-a-journey/useful-travel-apps
Weekly, monthly and annual MetroCard	www.m-card.co.uk
Rail times and journey planner	www.nationalrail.co.uk
Coach information	www.nationalexpress.com www.megabus.com



9. Other Measures

9.1 CAR SHARING

Table 9.1 Travel Plan Measure 10 – Car Sharing

Travel Plan Measure – TPM10	
Summary	The West Yorkshire Car Share scheme will be promoted by the TPC www.wycarshare.com
Guideline Timescale	Upon occupation.
Notes	To encourage car sharing.
Responsibility	TPC to include in the newsletters.

9.2 CAR CLUB

Table 9.2 Travel Plan Measure 11 – Car Club

Travel Plan Measure – TPM11	
Summary	The Enterprise Car club will be promoted by the TPC www.enterprisecarclub.co.uk
Guideline Timescale	Upon occupation.
Notes	To encourage car club use.
Responsibility	TPC to include in the newsletters.

9.3 SCHOOL TRAVEL

Table 9.3 Travel Plan Measure 12 – School Travel

Travel Plan Measure - TPM12	
Summary	Encourage sustainable travel modes within newsletters.
Guideline Timescale	Upon occupation.
Notes	To encourage children and parents to walk to school.
Responsibility	TPC.

9.4 HOME DELIVERY SERVICES

Table 9.4 Travel Plan Measure 13 – Home Delivery

Travel Plan Measure - TPM13	
Summary	Promote the use of home delivery services.
Guideline Timescale	Upon occupation.
Notes	To reduce vehicle trips.
Responsibility	TPC to include in the newsletters.



9.5 HOME WORKING PRACTICES

Table 9.5 Travel Plan Measure 14 – Home Working

Travel Plan Measure - TPM14	
Summary	Provide infrastructure/cabling for broadband to enable home working where feasible.
Guideline Timescale	Prior to occupation.
Notes	To encourage home working.
Responsibility	Miller Homes.

9.6 PERSONALISED TRAVEL PLANNING

Table 9.6 Travel Plan Measure 15 – Personalised Travel Planning

Travel Plan Measure - TPM15	
Summary	Personalised Travel Planning will be offered to all new residents. Personalised travelling planning will be provided to residents on request. Contact details of the TPC will be included on all communication materials.
Guideline Timescale	Upon occupation
Notes	To encourage sustainable modes of transport
Responsibility	TPC to include in the newsletters.

9.7 EV CHARGING

Table 9.7 Travel Plan Measure 16 – EV Charging

Travel Plan Measure - TPM16	
Summary	EV Charging points will be provided for each dwelling.
Guideline Timescale	Prior to occupation.
Notes	To reduce vehicle emissions.
Responsibility	Miller Homes.

9.8 SUSTAINBLE TRAVEL FUND CONTRIBUTION

Table 9.8 Travel Plan Measure 17 – Sustainable Travel Plan Fund Contribution

Travel Plan Measure - TPM17	
Summary	Pay the sum of £40,920 to the Council.
Guideline Timescale	50% prior to occupation and 50% prior to occupation of 40 th dwelling.
Notes	For the implementation of measures to encourage residents of the development to use sustainable modes of transport. To be used on items such as MCards.
Responsibility	Miller Homes.

9.9 COMMUNICATION

9.9.1 When raising awareness of the TP, consideration should be given to different groups that should be targeted.



9.9.2 Publicity material could include the following:

- Ensuring that a copy of the TP is available to all residents on request;
- Sustainable travel information to be provided to residents via the Travel Leaflet; and
- A TP email/newsletter – for example a leaflet detailing the launch of a new measure, the advantages of this and who to contact to find out more.

9.9.3 When developing the marketing strategy, it is often useful to identify which of the above media would be most effective at different stages of implementation and identify the timescale and who will be responsible for developing each.



10. Action Plan

10.1.1 An initial Action Plan is shown within Table 10.1 to identify the actions, objectives, timescales and responsibilities. This Action Plan will develop over time and adapt with the Site and to suit residents needs.

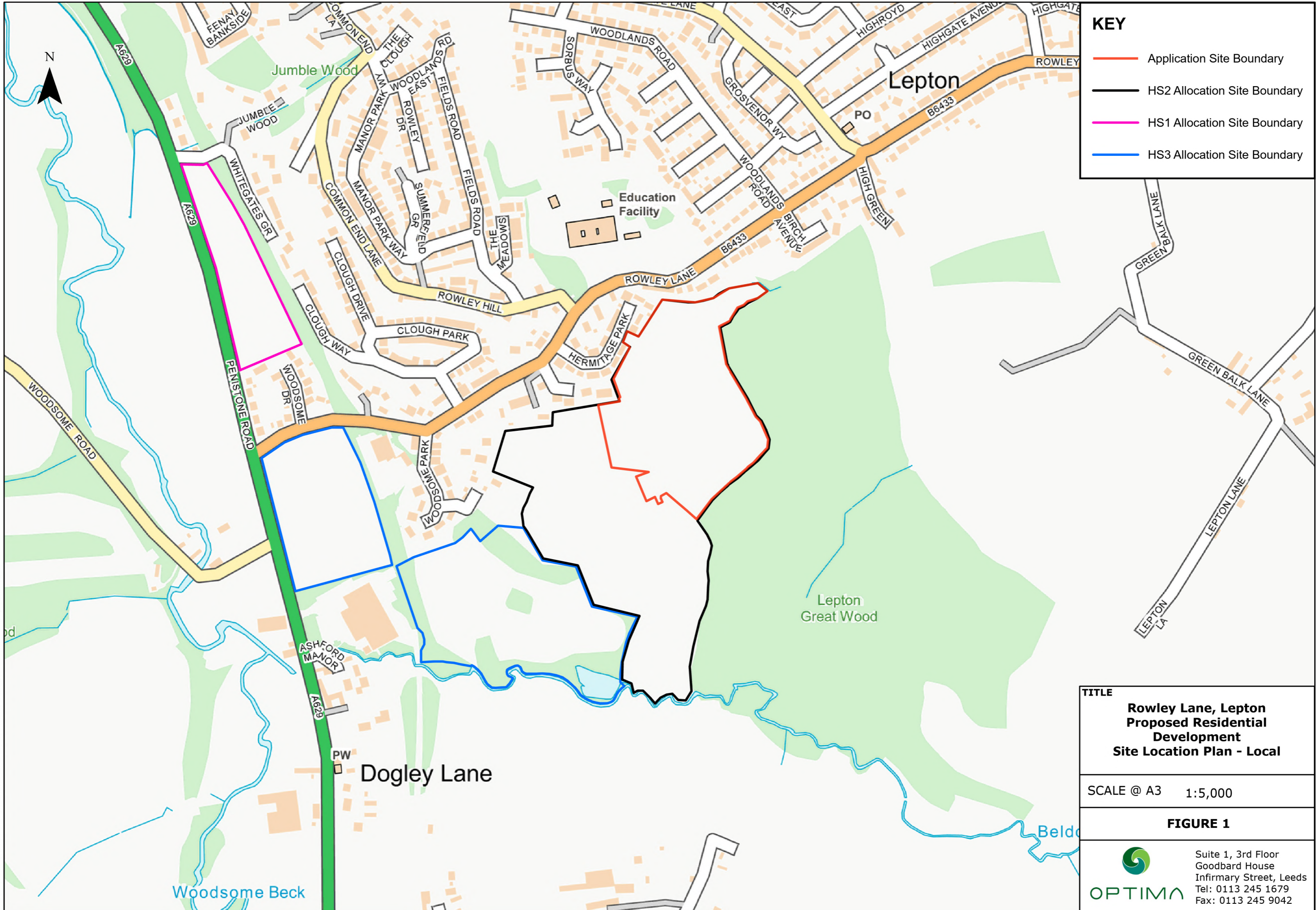
Table 10.1 Action Plan

Reference	Measures	Objective	Guideline Timescale	Responsibility
TPM1	Appoint a Travel Plan Coordinator	To implement, monitor and review the Travel Plan	6 months prior to occupation	Miller Homes
TPM2	Undertake travel surveys	To gather baseline travel information and inform measures	Within 12 months of first occupation, or 50% occupation, whichever is sooner	Travel Plan Coordinator
TPM3	Monitor and Review	To monitor Travel Plan performance	Annually during developer TPC role	Travel Plan Coordinator
TPM4	Provide internal pedestrian and cycle routes	To encourage walking and cycling	To be agreed	Miller Homes
TPM5	Improve PRow KIR/85/10	To encourage walking	To be agreed	Miller Homes
TPM6a/6b/6c	Provide travel information leaflets for residents and visitors	To encourage sustainable travel	Upon occupation	Travel Plan Coordinator
TPM7	Promote National and Local events	To encourage sustainable travel	Upon occupation	Travel Plan Coordinator
TPM	Provision of cycle storage	To encourage cycling	Prior to occupation	Miller Homes
TPM9	Promote cycle challenges	To encourage cycling	Upon occupation	Miller Homes
TPM10	Promote car sharing	To encourage car sharing and reduce single occupancy trips	Upon occupation	Travel Plan Coordinator
TPM11	Promote car club	To encourage sustainable travel	Upon occupation	Travel Plan Coordinator
TPM12	Encourage sustainable school travel	To encourage sustainable travel	Upon occupation	Travel Plan Coordinator
TPM14	Enable home/flexible work practices	To reduce the need to travel	Upon occupation	Travel Plan Coordinator
TPM15	Provide personalised journey planning	To encourage sustainable travel	Upon occupation	Travel Plan Coordinator
TPM16	Provide EV charging	To encourage the use of zero/low immersion vehicles	Upon occupation	Miller Homes
TPM17	Sustainable Travel Fund Contribution	To encourage sustainable travel	Prior to occupation and prior to occupation of the 40 th dwelling	Miller Homes



Figures





KEY

- Application Site Boundary
- HS2 Allocation Site Boundary
- HS1 Allocation Site Boundary
- HS3 Allocation Site Boundary

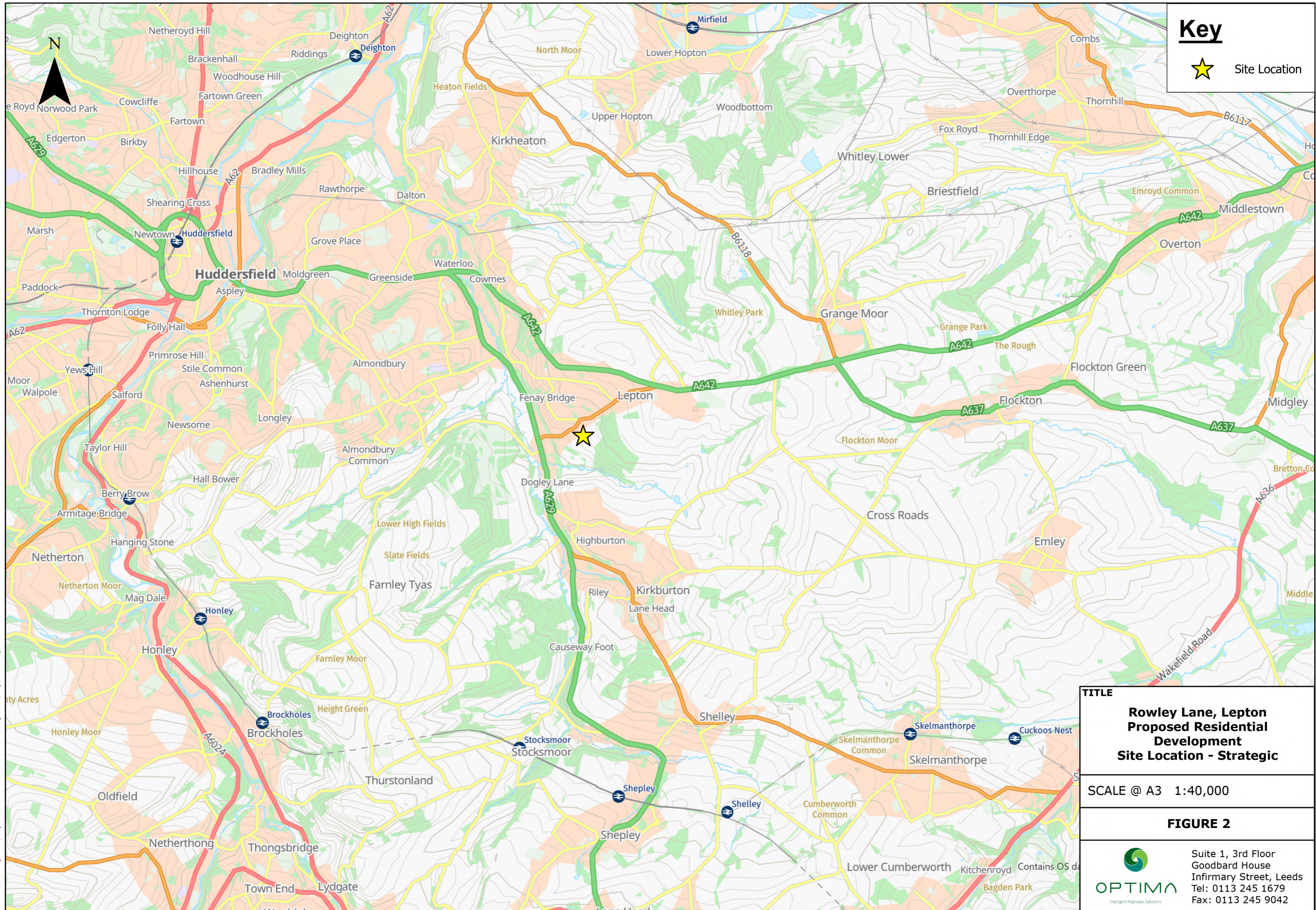
TITLE
Rowley Lane, Lepton
Proposed Residential
Development
Site Location Plan - Local

SCALE @ A3 1:5,000

FIGURE 1

 Suite 1, 3rd Floor
 Goodbard House
 Infirmary Street, Leeds
 Tel: 0113 245 1679
 Fax: 0113 245 9042

Path: O:\Rowley Lane, Lepton\DRAWINGS\GIS\Rowley Lane 2024 GIS\2024 Rowley Lane, Lepton GIS.aprx



Key

★ Site Location

TITLE

**Rowley Lane, Lepton
Proposed Residential
Development
Site Location - Strategic**

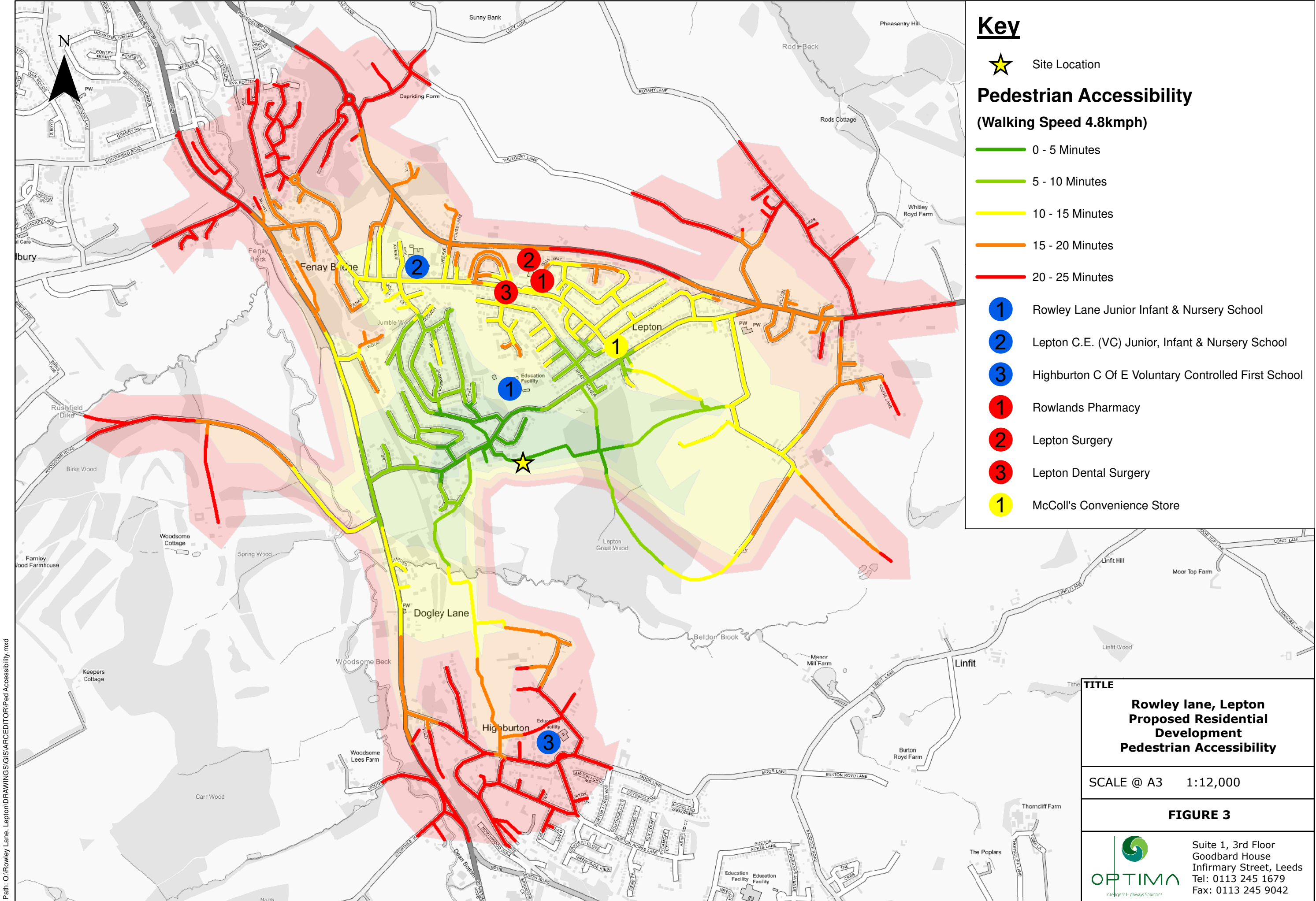
SCALE @ A3 1:40,000

FIGURE 2



Suite 1, 3rd Floor
Goodbard House
Infirmary Street, Leeds
Tel: 0113 245 1679
Fax: 0113 245 9042

Path: O:\Rowley Lane, Lepton\DRAWINGS\GIS\2024 Rowley Lane, Lepton GIS.aprx



Key

★ Site Location

Pedestrian Accessibility

(Walking Speed 4.8kmph)

- 0 - 5 Minutes
- 5 - 10 Minutes
- 10 - 15 Minutes
- 15 - 20 Minutes
- 20 - 25 Minutes

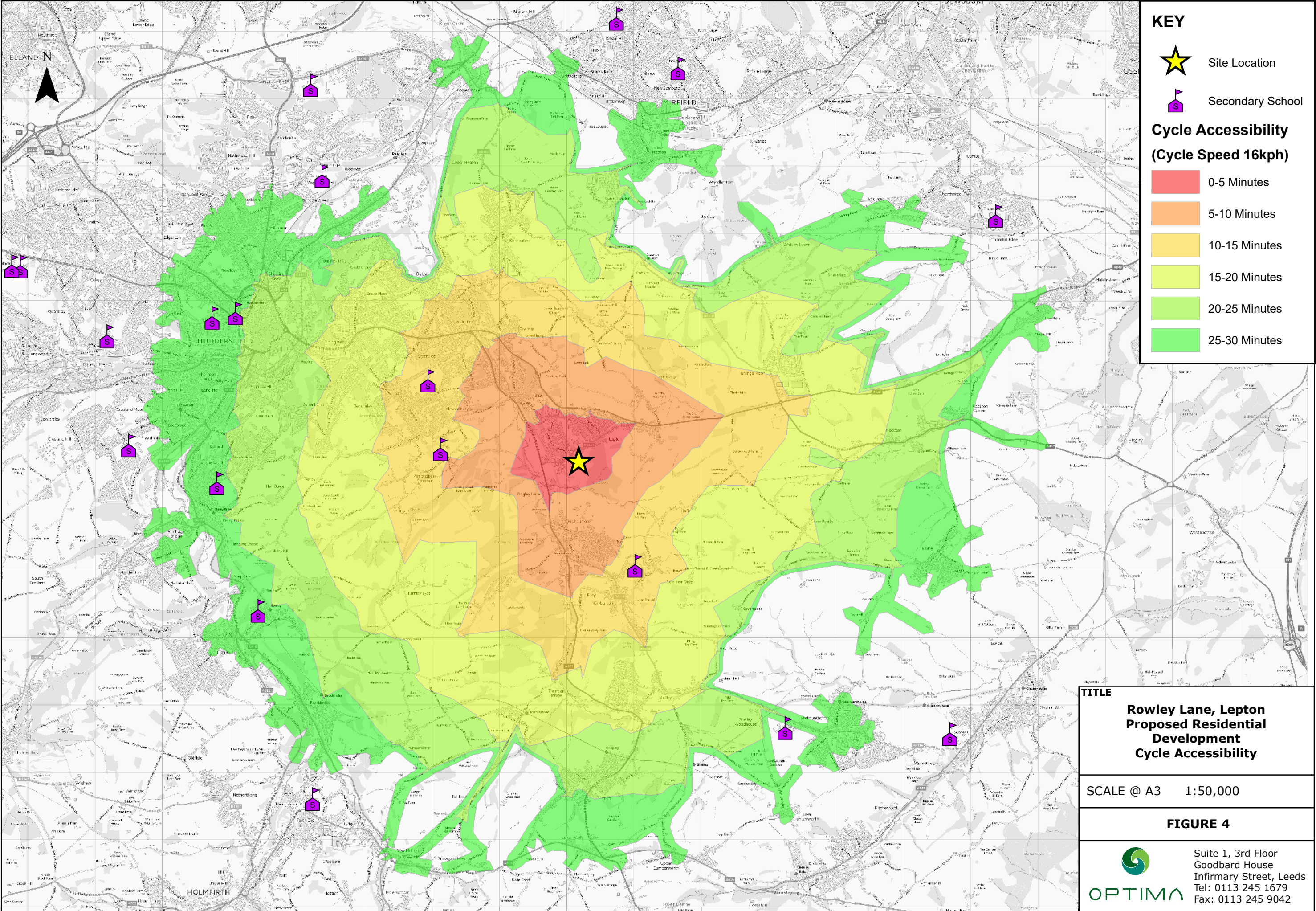
- 1 Rowley Lane Junior Infant & Nursery School
- 2 Lepton C.E. (VC) Junior, Infant & Nursery School
- 3 Highburton C Of E Voluntary Controlled First School
- 1 Rowlands Pharmacy
- 2 Lepton Surgery
- 3 Lepton Dental Surgery
- 1 McColl's Convenience Store

TITLE
Rowley lane, Lepton
Proposed Residential
Development
Pedestrian Accessibility


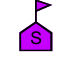
SCALE @ A3 1:12,000

FIGURE 3



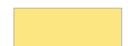

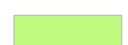
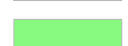
 Suite 1, 3rd Floor
 Goodbard House
 Infirmary Street, Leeds
 Tel: 0113 245 1679
 Fax: 0113 245 9042



KEY

-  Site Location
-  Secondary School


**Cycle Accessibility
(Cycle Speed 16kph)**

-  0-5 Minutes
-  5-10 Minutes
-  10-15 Minutes
-  15-20 Minutes
-  20-25 Minutes
-  25-30 Minutes

TITLE
**Rowley Lane, Lepton
 Proposed Residential
 Development
 Cycle Accessibility**

SCALE @ A3 1:50,000

FIGURE 4

 Suite 1, 3rd Floor
 Goodbard House
 Infirmary Street, Leeds
 Tel: 0113 245 1679
 Fax: 0113 245 9042

Appendices



Appendix A Site Layout Plan D





SCHEDULE OF ACCOMMODATION

AFFORDABLE										
Ref	Housetype	Type	Parking	Storey	Bed	Sq Ft	No	Total Sq Ft		
DEL	Delmont	End	PS	2	2	758	2	1516		
		Mid	PS	2	2	758	1	758		
		Semi	PS	2	2	850	4	3400		
BAY	Baymont	End	PS	2	2	850	2	1700		
		Mid	PS	2	2	850	1	850		
LOC	Lockton	Semi	PS	2	3	1001	6	6006		
							SUB TOTAL	16	14230	
OPEN MARKET										
WHI	Whitton	Det	PS	2	2	947	7	6629		
BRA	Braxton	Det	PS	2	2	996	8	7968		
POR	Portstone	Det	SG	2	3	1212	2	2424		
DEN	Denstone	Det	INT	2	3	1368	9	12312		
CHE	Cherrystone	Det	INT	2	3	1296	6	7776		
BEA	Beauwood	Det	SG	2	4	1379	6	8274		
SAN	Sandalwood	Det	SG	2	4	1422	2	2844		
HOM	Homesford	Det	DDG	2	5	1568	5	7840		
DEF	Denford	Det	INT	2	5	1640	12	19680		
GRA	Grayford	Det	SG	2	5	1780	6	10680		
		DDG	2	5	1780	1	1780			
							SUB TOTAL	64	88207	
							TOTAL	80	102437	

SALES AREA EXTRACT



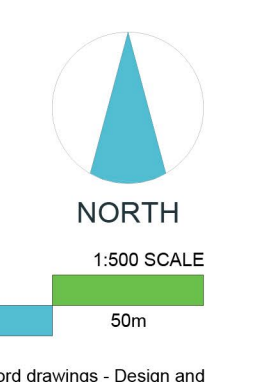
PLANNING LAYOUT LAYERS KEY

	1800mm PIER AND PANEL WALL
	1800mm TIMBER FENCE
	2000mm ACCOUSTIC FENCE
	600mm KNEE HIGH RAIL
	1200mm POST & RAIL
	1500mm RAILING WITH HEDGE BEHIND
	EXISTING STONE WALL TO BE REPAIRED
	APPLICATION BOUNDARY
	LOCKABLE GATE
	AFFORDABLE / AFFORDABLE RENT
	AFFORDABLE / SHARED OWNERSHIP
	AFFORDABLE / FIRST HOMES
	TREES
	VISIBILITY SPLAYS
	CARS (VISITOR PARKING)
	BIN COLLECTION POINT
	BINS
	CYCLE SHEDS
	BLOCK PAVING (SHARED SURFACES)
	BLOCK PAVING (RAISED TABLE)

D	27.11.24	LAYOUT UPDATED IN RESPONSE TO AGRICULTURAL IMPACT ASSESSMENT & CLIENT COMMENTS. DEVELOPMENT PUSHED FURTHER FROM 15M WOODLAND BUFFER.	JP	VS
C	13.11.24	MAINTENANCE ACCESS GATE MOVED IN LINE WITH CLIENT REQUEST.	JP	VS
B	11.11.24	LAYOUT UPDATED IN RESPONSE TO PRE-APP COMMENTS.	JP	VS
A	17.07.24	AFFORDABLE TENURE UPDATED IN LINE WITH CLIENTS REQUEST.	JP	VS

Architecture
 Planning
 Urban Design
 Landscaping

CLIENT: MILLER HOMES
PROJECT: HERMITAGE PARK, LEPTON
DRAWING: SITE LAYOUT
DRAWING NUMBER: 22.561101 D
SCALE @ A0: 1:500
DATE: OCT 24
CHECKED: VS



Do not scale off this drawing - Only figure dimensions to be taken from this drawing. Drawings based on Ordnance Survey and/or existing record drawings - Design and Drawing created subject to Site Survey, Structural Survey, Site Investigations, Planning and Statutory Requirements and Approvals. Authorized reproduction from Ordnance Survey Map with permission of the Controller of Her Majesty's Stationery Office. Crown Copyright reserved.