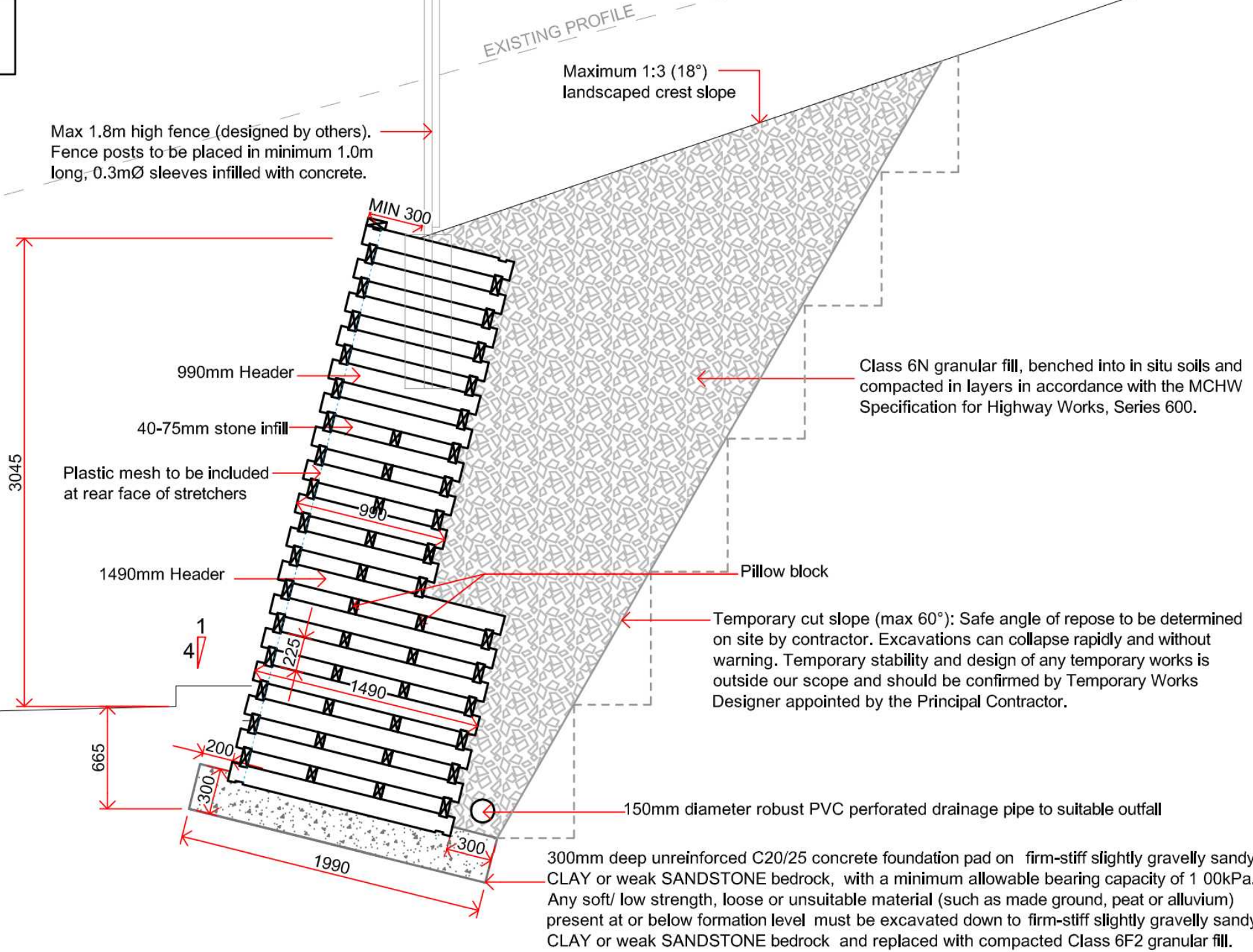


SECTION 3-3

1:50



Max 1.8m high fence (designed by others). Fence posts to be placed in minimum 1.0m long, 0.3mØ sleeves infilled with concrete.

Maximum 1:3 (18°) landscaped crest slope

Class 6N granular fill, benched into in situ soils and compacted in layers in accordance with the MCHW Specification for Highway Works, Series 600.

Temporary cut slope (max 60°): Safe angle of repose to be determined on site by contractor. Excavations can collapse rapidly and without warning. Temporary stability and design of any temporary works is outside our scope and should be confirmed by Temporary Works Designer appointed by the Principal Contractor.

300mm deep unreinforced C20/25 concrete foundation pad on firm-stiff slightly gravelly sandy CLAY or weak SANDSTONE bedrock, with a minimum allowable bearing capacity of 1 00kPa. Any soft/ low strength, loose or unsuitable material (such as made ground, peat or alluvium) present at or below formation level must be excavated down to firm-stiff slightly gravelly sandy CLAY or weak SANDSTONE bedrock and replaced with compacted Class 6F2 granular fill.