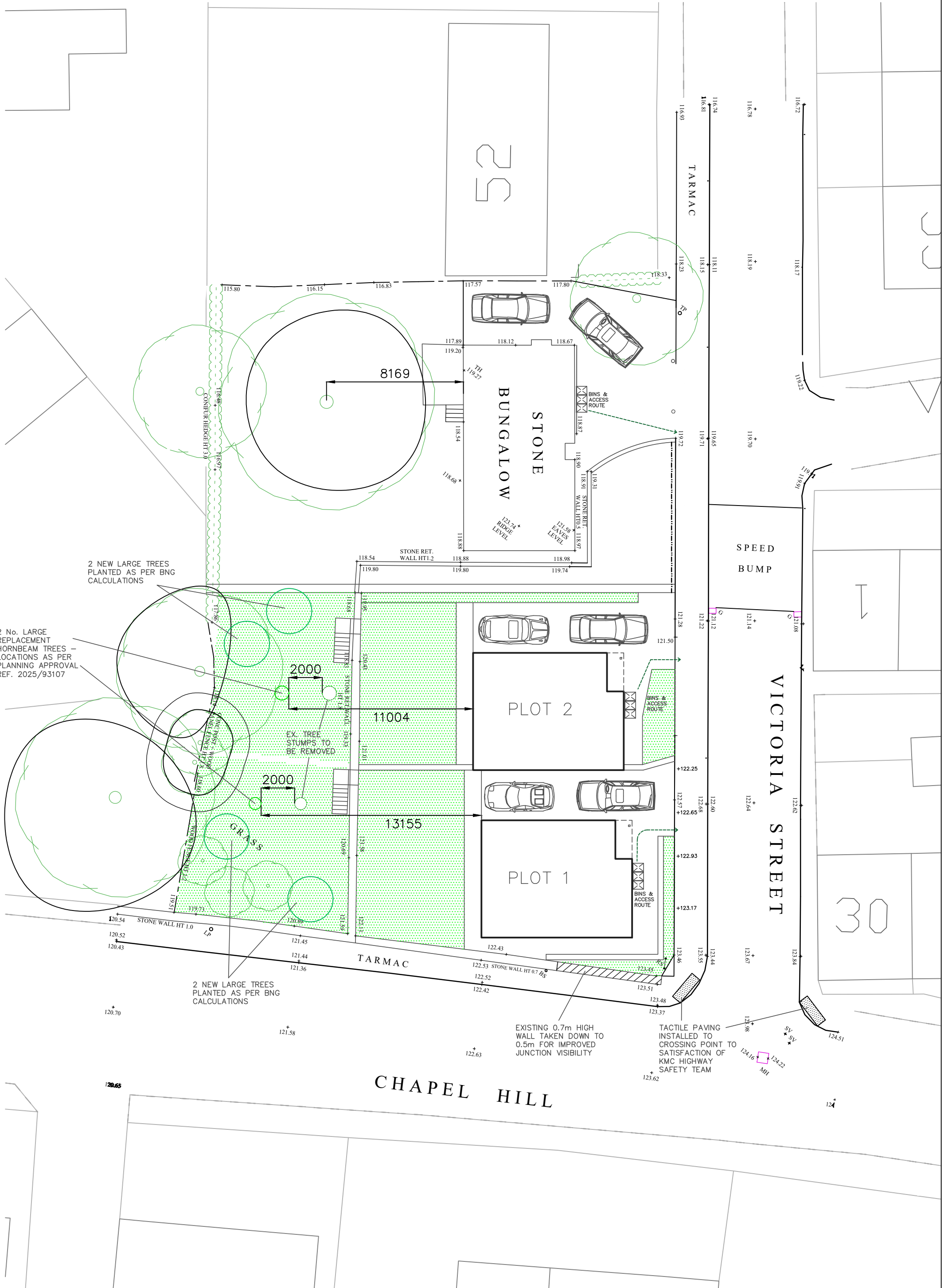


SITE PLAN
AS PROPOSED

PROPOSED HOUSING DEVELOPMENT
54 VICTORIA STREET, CLAYTON WEST, HD8 9NW
DWG No. 682-A12 revA
SCALE 1:200@A3 NOVEMBER 2025

REV DATE ITEM
A 13/04/26 LANDSCAPING/TREE PLANTING UPDATED

AUTH
ID



2 NEW LARGE TREES
PLANTED AS PER BNG
CALCULATIONS

2 No. LARGE
REPLACEMENT
HORNBEAM TREES -
LOCATIONS AS PER
PLANNING APPROVAL
REF. 2025/93107

2 NEW LARGE TREES
PLANTED AS PER BNG
CALCULATIONS

EXISTING 0.7m HIGH
WALL TAKEN DOWN TO
0.5m FOR IMPROVED
JUNCTION VISIBILITY

TACTILE PAVING
INSTALLED TO
CROSSING POINT TO
SATISFACTION OF
KMC HIGHWAY
SAFETY TEAM

CHAPEL HILL

VICTORIA STREET

SPEED
BUMP

STONE
BUNGALOW

PLOT 2

PLOT 1

8169

11004

13155

25

30

TARMAC

STONE RET.
WALL HT1.2

CONIFER HEDGE HT 3.0

EX. TREE
STUMPS TO
BE REMOVED

GRASS

TARMAC

STONE WALL HT 1.0

STONE WALL HT 0.7

SY

MI

124