





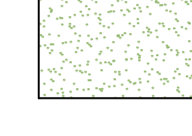

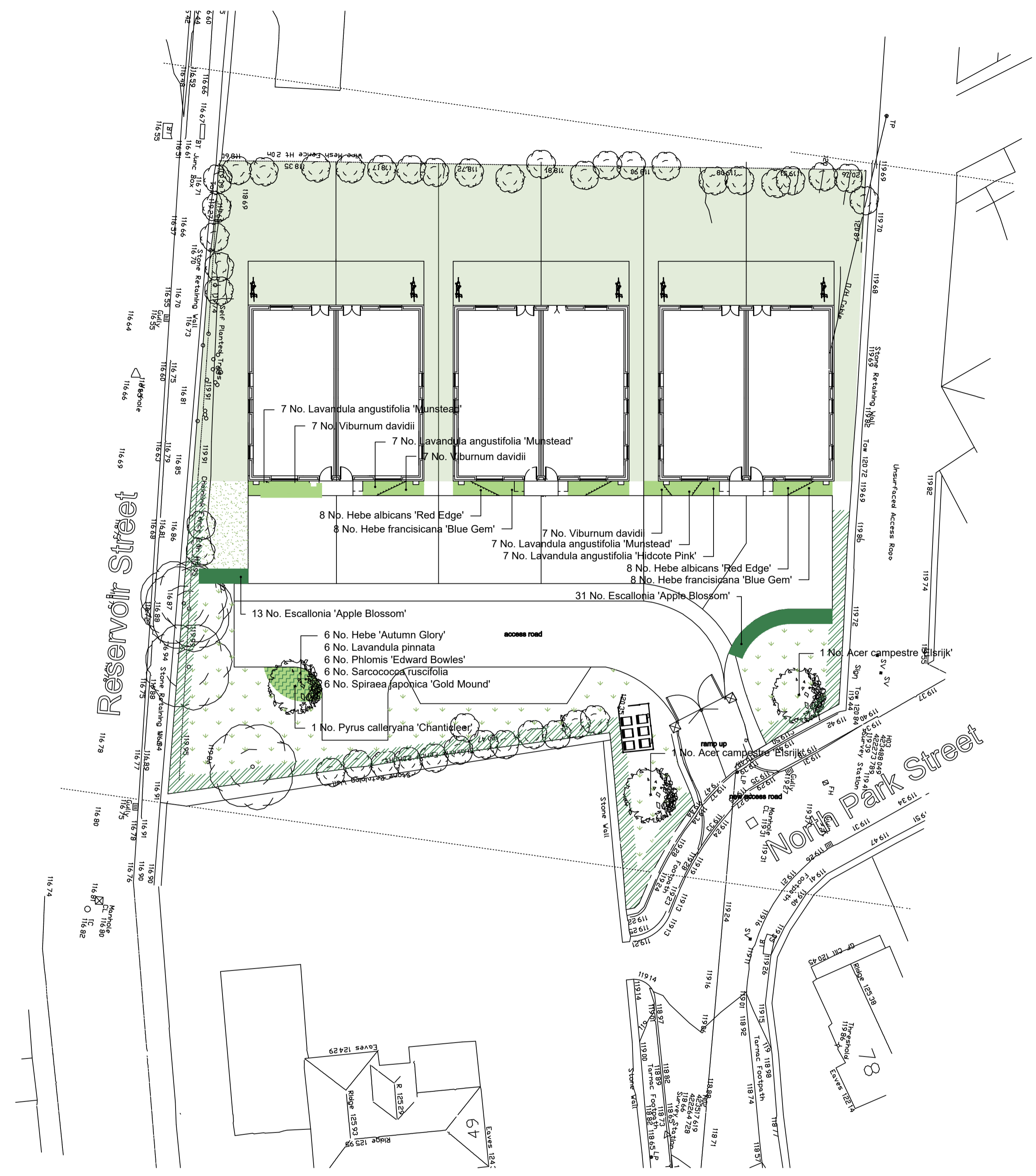


Legend

-  Proposed tree planting within soft landscape. See detail
-  Proposed decorative hedge planting to be planted as specified
-  Proposed mixed native hedging woodland edge mix. Species to be planted in groups of 5-7 at percentages specified. All whips to be staked and tied with expandable rubber tree ties and covered with 60cm tall Spiral tree guards. Where shown within RPAs to be located where possible at percentages specified in line with best practice to strengthen the existing vegetation
-  Proposed mixed shrub planting area receive 75mm bark mulch after planting operations. Species to be planted in groups of 5-7.
-  Proposed shrub planting to receive 75mm bark mulch after planting operations
-  Proposed grass areas to receive good quality amenity grass turves laid in line with good horticultural practices
-  Proposed grassland areas, to be seeded with Hedgerow and Light Shade Seed Mix mix as supplied by British Wildflower Seeds and sown as recommended or similar
-  Rear garden area

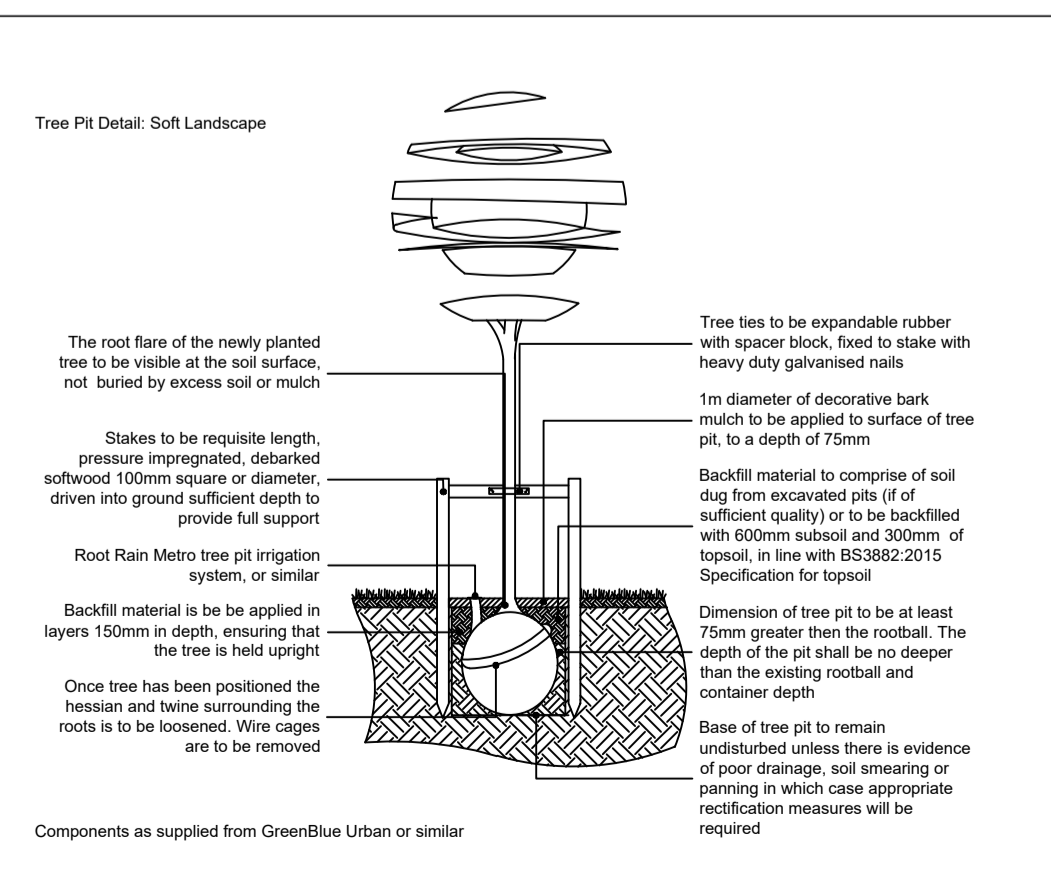


Planting Schedule

Trees					
Species Name	Girth	Height	Density	Specification	No.
Acer campestre 'Elsrijk'	16-18cm	400-450cm	Counted	:Extra Heavy Standard :Clear Stem 150-175cm :RB	1
Pyrus calleryana 'Chanticleer'	12-14cm	200-250cm	Counted	:Standard :Clear Stem min 150cm :RB	1

Shrubs					
Species Name	Height	Pot Size	Specification	Density	No.
Escallonia 'Apple Blossom'	60-80cm	5L	:Bushy :C :Planted and maintained as hedge	4/linear m	44
Hebe albicans 'Red Edge'	40-60cm	5L	:Bushy :C	4/m2	16
Hebe 'Autumn Glory'	40-60cm	5L	:Bushy :C	4/m2	6
Hebe franciscana 'Blue Gem'	40-60cm	5L	:Bushy :C	4/m2	16
Lavandula angustifolia 'Hidcote Pink'	40-60cm	5L	:Bushy :C	4/m2	7
Lavandula angustifolia 'Munstead'	40-60cm	5L	:Bushy :C	4/m2	21
Lavandula pinnata	40-60cm	5L	:Bushy :C	4/m2	6
Phlomis 'Edward Bowles'	40-60cm	5L	:Bushy :C	4/m2	6
Sarcococca ruscifolia	40-60cm	5L	:Bushy :C	4/m2	6
Spiraea japonica 'Gold Mound'	40-60cm	5L	:Bushy :C	4/m2	6
Viburnum davidii	40-60cm	5L	:Bushy :C	4/m2	21

Mixed Native Hedgerow Mix			
Species Name	Height	Specification	Percentage
Corylus avellana	60-80cm	:Bushy :RB :Double staggered rows :5/linear m	10%
Crataegus monogyna	100-120cm	:Feather :RB :Double staggered rows :5/linear m	40%
Euonymus europaeus	60-80cm	:Bushy :RB :Double staggered rows :5/linear m	10%
Prunus spinosa	100-120cm	:Feather :RB :Double staggered rows :5/linear m	20%
Rosa canina	60-80cm	:Bushy :RB :Double staggered rows :5/linear m	5%
Viburnum lantana	60-80cm	:Bushy :RB :Double staggered rows :5/linear m	15%



N.B. To be read alongside engineering and ecology plans
N.C. Root barriers to be used as needed in line with best practice

NOTES:
Do not scale from drawing
Not for construction, for planning purposes only

SPECIFICATION
All works are to comply with the written Soft Landscape Specification.

Copyright of LVIA Ltd. All rights described in Chapter IV of the Copyright, Designs and Patents Act 1988 have been generally asserted. Copyright of this plan remains with LVIA Ltd until all fees have been paid in full.

A	11.12.25	Addition of north point	JF
Rev	Date	Details	Drawn

Scheme: Reservoir Street, Dewsbury

Drawing: Soft Landscape Proposals

Drawing no:	ARB1683-11	Date:	November 2025
Scale:	1:200@A1	Checked:	JPF
Drawn:	SC		