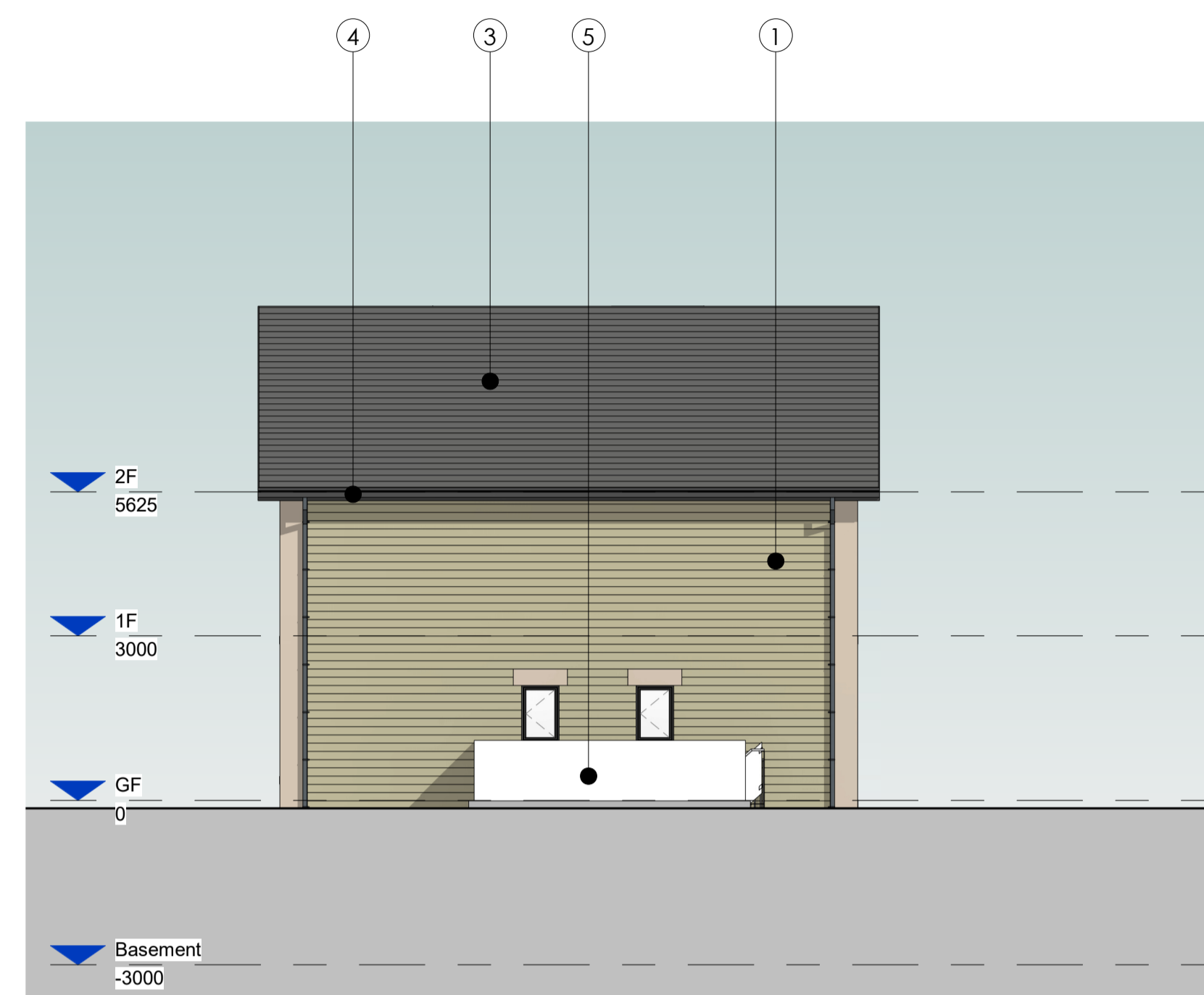


Northpoint:

Rev	Date	Amendments	By	Chkd
A	29.01.2026	Updated in line with client comments	ND	ADP
B	05.03.2026	Updated in line with client comments	ND	ADP



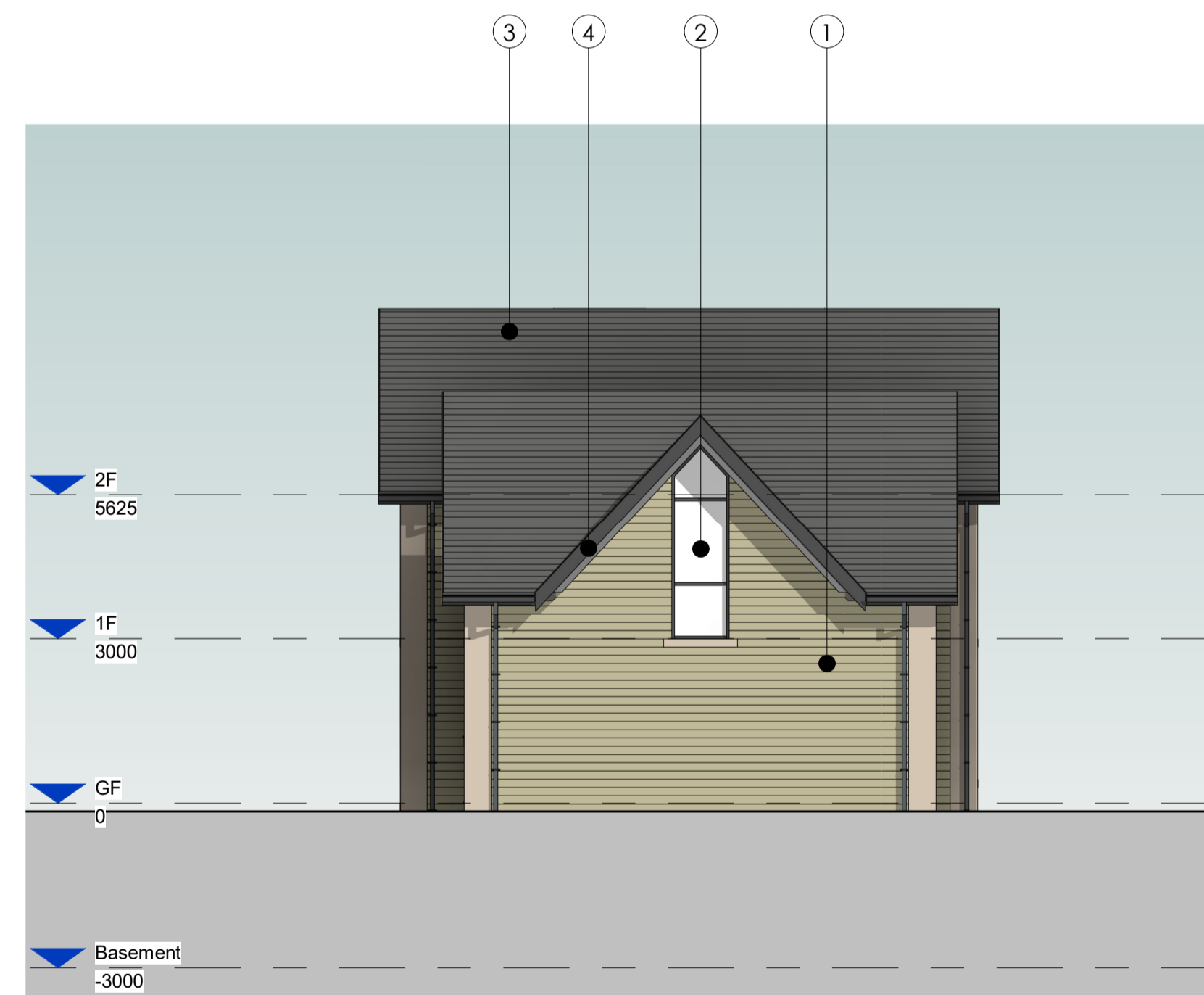
Front Elevation 1 : 100



Side Elevation 1 1 : 100



Rear Elevation 1 : 100



Side Elevation 2 1 : 100

**Materials Schedule**

- ① Stone to approved sample.
- ② Aluminium carved double glazed window & doors, colour dark grey
- ③ Tile/slate roof finish to approved sample
- ④ Powder coated aluminium fascia & soffit panels, colour dark grey
- ⑤ Glazed balustrade (Light grey)
- ⑥ Metal decorative balustrade (Dark grey)



8 Wharf Street,  
Leeds, LS2 7EQ

T: 0113 244 5038

info@den.uk.com

www.den.uk.com

Project:  
Proposed Residential Development,  
West House, Oxford Rd, Gomersal,  
Cleckheaton BD19 4AU

Client:  
Empire Real Estate Developments Ltd

Dwg Title:  
Plots 7 - Proposed Elevations

Date:	Scale:	Drawn:	Checked:
September 2024	As indicated	HSS	ADP

Project No:	Size:	Status:
3427	A1	Preliminary

Drawing Number:	Revision:
3427-DEN-XX-ZZ-DR-A-4101	B