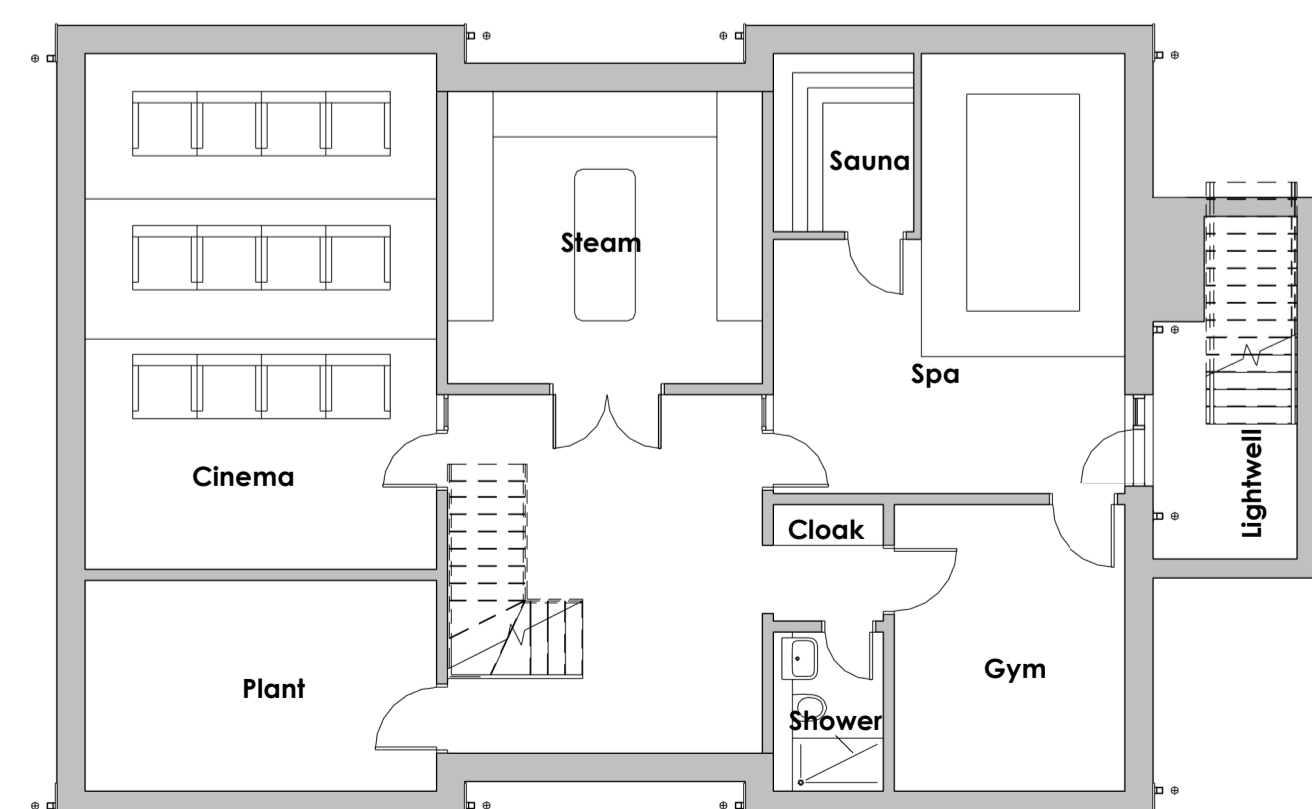


Ground Floor 1 : 100



Basement 1 : 100



3D View 1



3D View 2

P:\3427 - West House, Gomersal\03\_Spatial Coordination\03.1 - Drawings\Planning\3427 - Plot 4, 5 & 6 - Model 006.rvt

Copyright of this drawing remains the sole property of Den Architecture Ltd unless otherwise assigned in writing. Do not scale from this drawing. Figured dimensions are to be worked in all cases with any discrepancies reported to Den Architecture Ltd prior to commencement of any work.

Northpoint:

Rev	Date	Amendments	By	Chkd
A	29.01.2026	Updated in line with client comments	ND	ADP
B	05.03.2026	Updated in line with client comments	ND	ADP

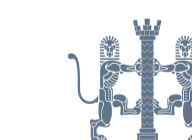
Gross Internal Area (GIA)		
Level	Area	ft2
Basement	118.9 m <sup>2</sup>	1280 ft <sup>2</sup>
GF	132.2 m <sup>2</sup>	1423 ft <sup>2</sup>
1F	168.3 m <sup>2</sup>	1812 ft <sup>2</sup>
2F	68.3 m <sup>2</sup>	735 ft <sup>2</sup>
	487.7 m <sup>2</sup>	5249 ft <sup>2</sup>

Please note: GIA Area excludes garage.



8 Wharf Street,  
Leeds, LS2 7EQ

T: 0113 244 5038  
info@den.uk.com  
www.den.uk.com



Project:  
Proposed Residential Development,  
West House, Oxford Rd, Gomersal,  
Cleckheaton BD19 4AU

Client:  
Empire Real Estate Developments Ltd

Dwg Title:  
Plots 4,5 and 6 - Proposed Plans

Date:	Scale:	Drawn:	Checked:
September 2024	1 : 100	HSS	ADP

Project No:	Size:	Status:
3427	A1	Preliminary

Drawing Number:	Revision:
3427-DEN-XX-ZZ-DR-A-2103	B