

Northpoint:

Rev	Date	Amendments	By	Chkd



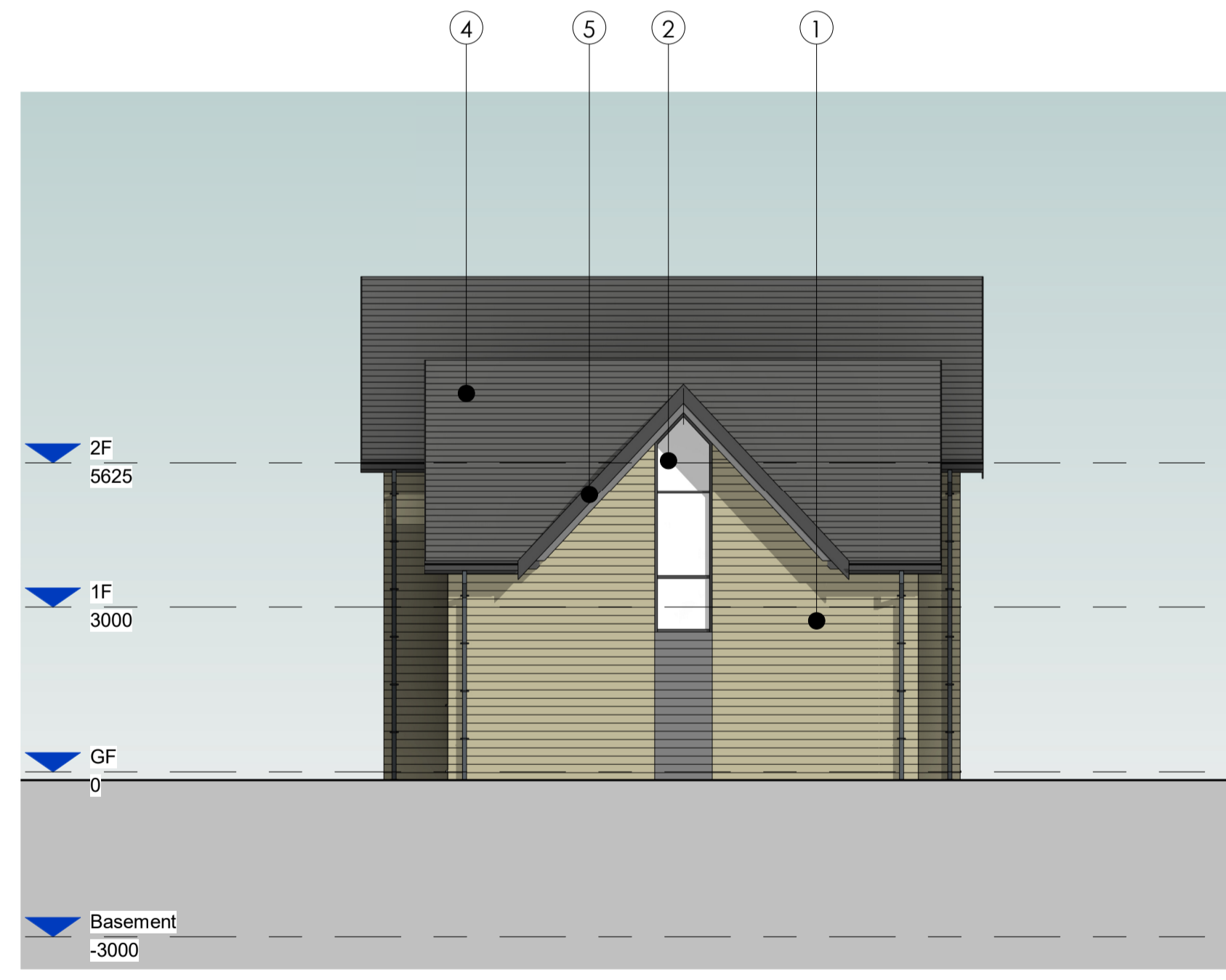
Front Elevation 1 : 100



Side Elevation 1 1 : 100



Rear Elevation 1 : 100



Side Elevation 2 1 : 100

**Materials Schedule**

- ① Stone to approved sample.
- ② Aluminium carved double glazed window & doors, colour dark grey
- ③ Composite timber effect cladding, colour dark grey
- ④ Tile/slate roof finish to approved sample
- ⑤ Powder coated aluminium fascia & soffit panels, colour dark grey
- ⑥ Glazed balustrade



8 Wharf Street,  
Leeds, LS2 7EQ  
T: 0113 244 5038  
info@den.uk.com  
www.den.uk.com

Project: Proposed Residential Development, West House, Oxford Rd, Gomersal, Cleckheaton BD19 4AU			
Client: Empire Real Estate Developments Ltd			
Dwg Title: Plot 1,3, and 9 - Proposed Elevations			
Date: September 2024	Scale: As indicated	Drawn: HSS	Checked: ADP
Project No: 3427	Size: A1	Status: -	
Drawing Number: 3427-DEN-XX-ZZ-DR-A-4100			Revision: