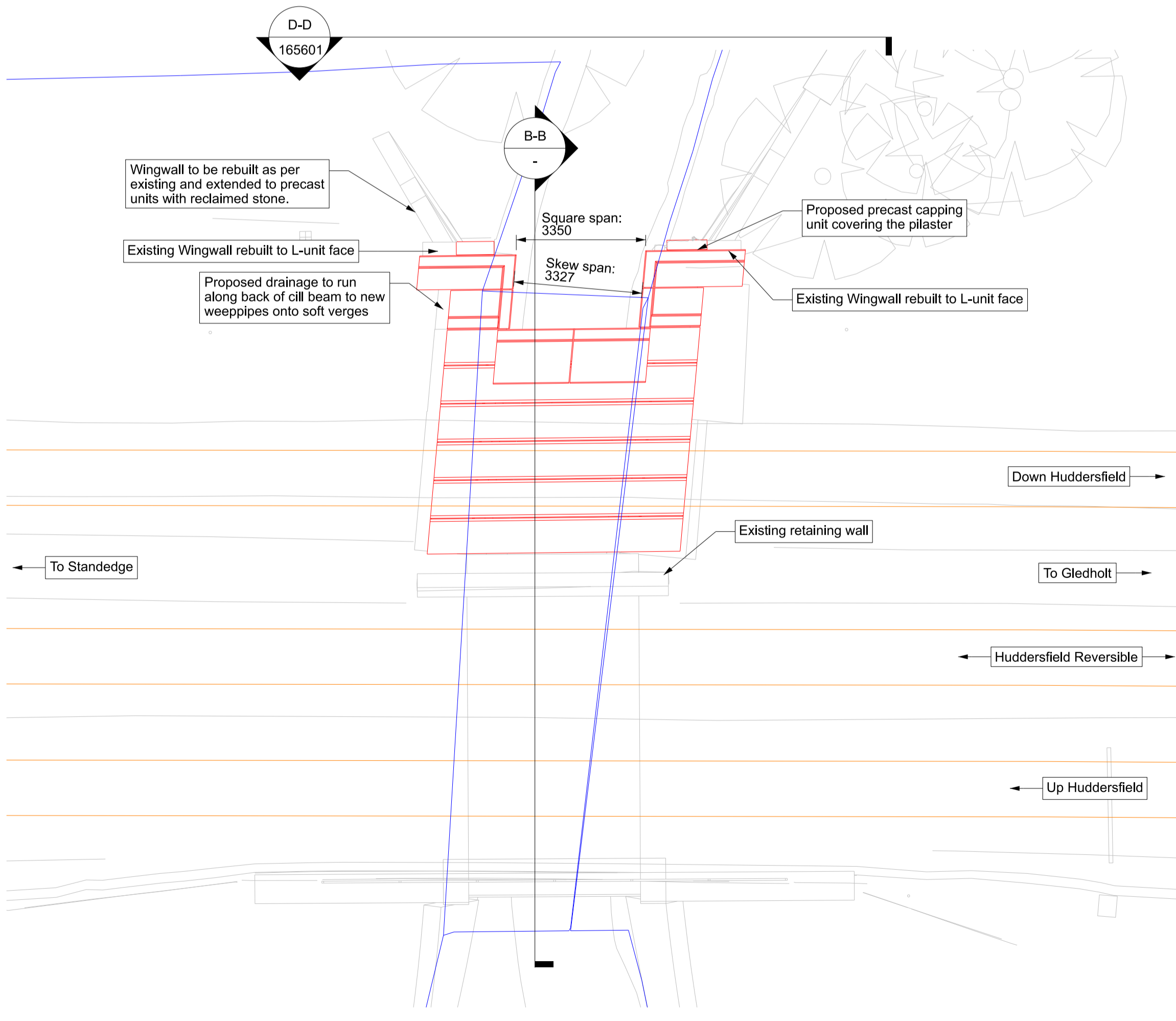
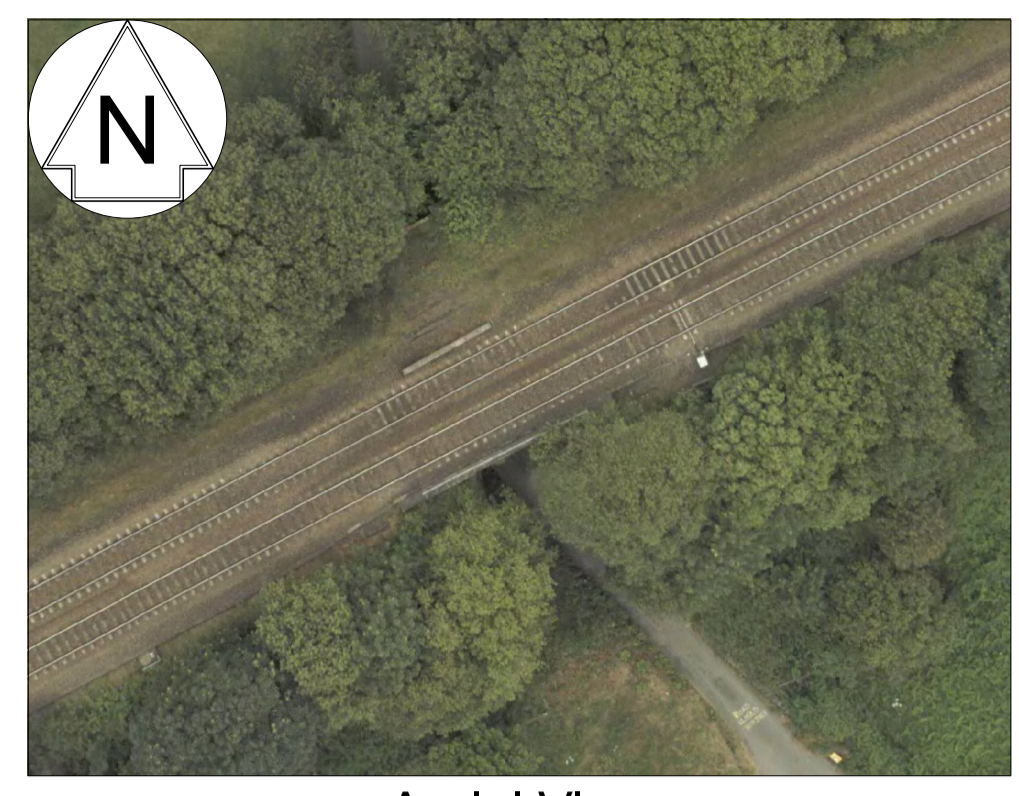


Existing Plan
Scale 1:100



Proposed Plan
Scale 1:100



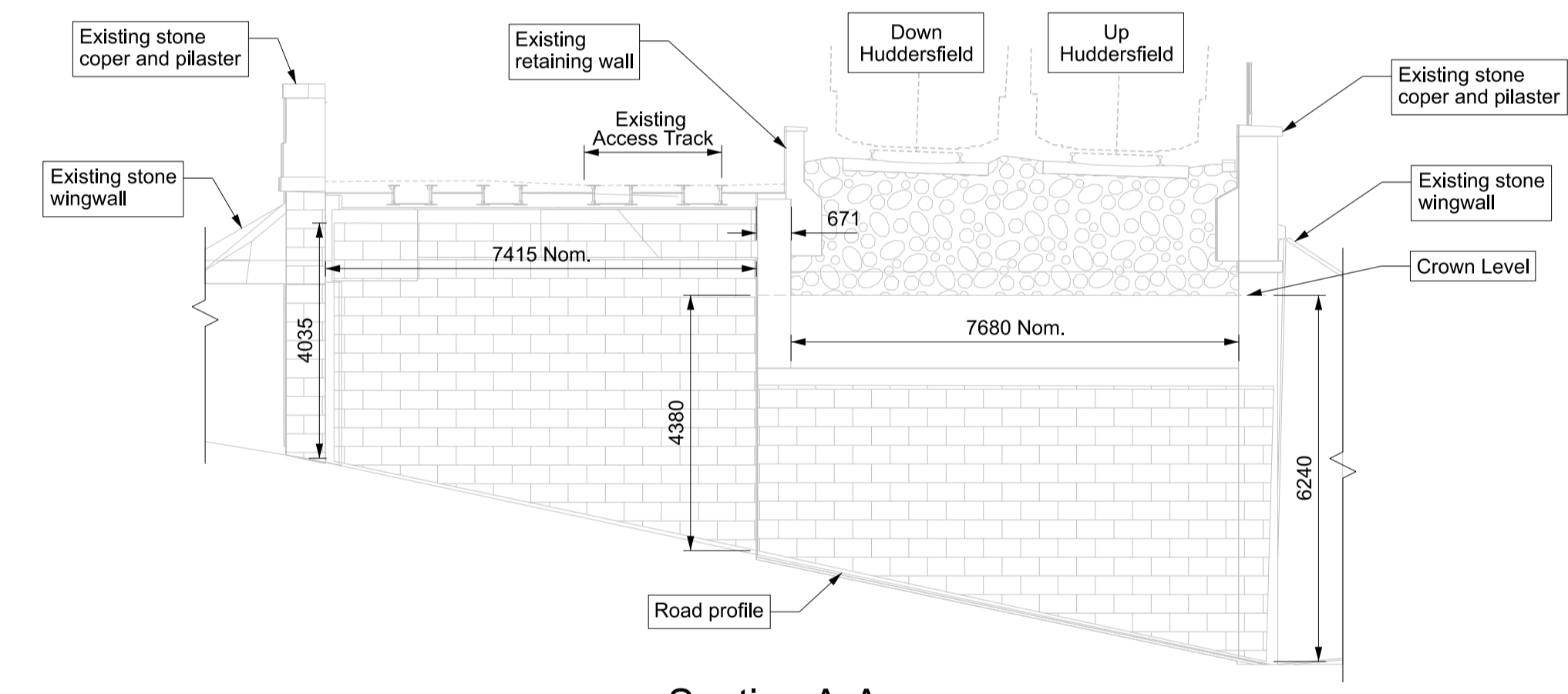
Aerial View
Scale N.T.S



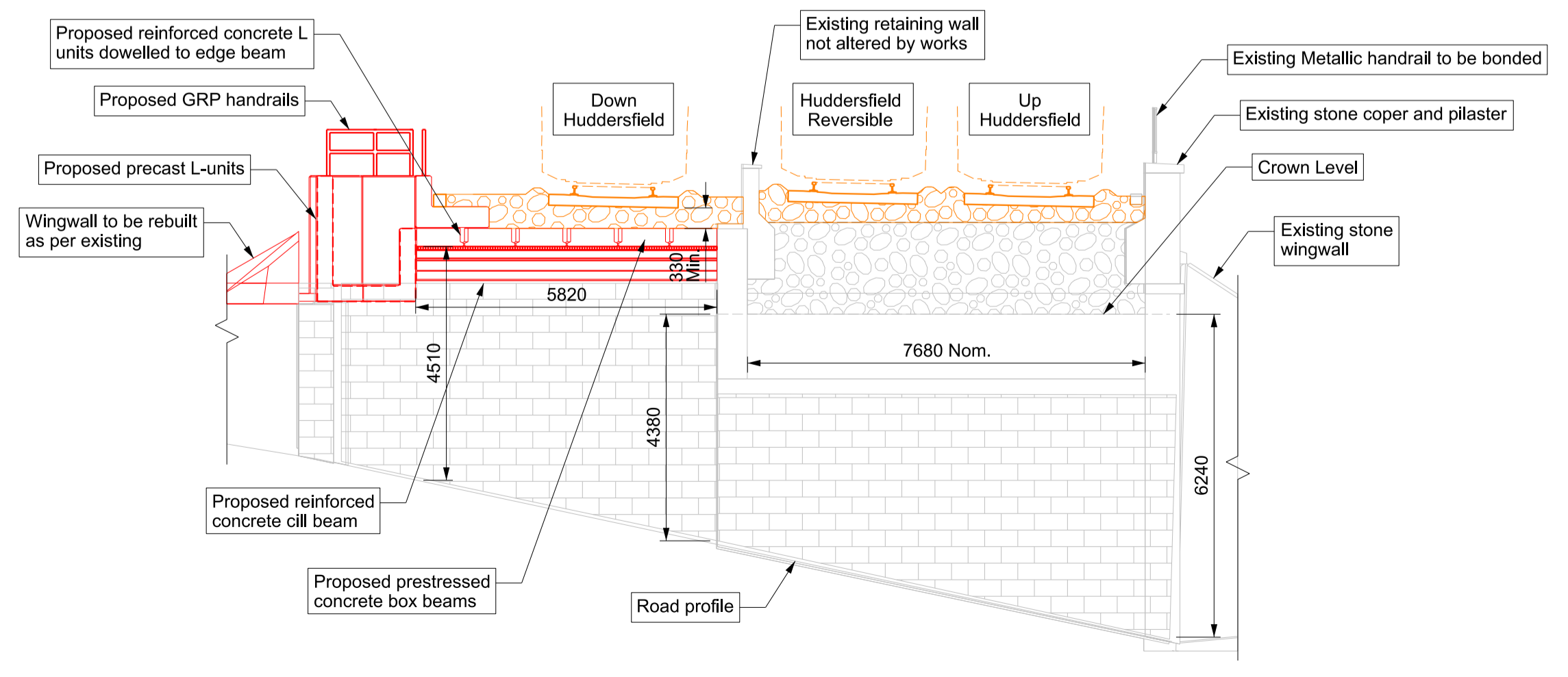
Photo 1
(Looking South East)
Scale N.T.S



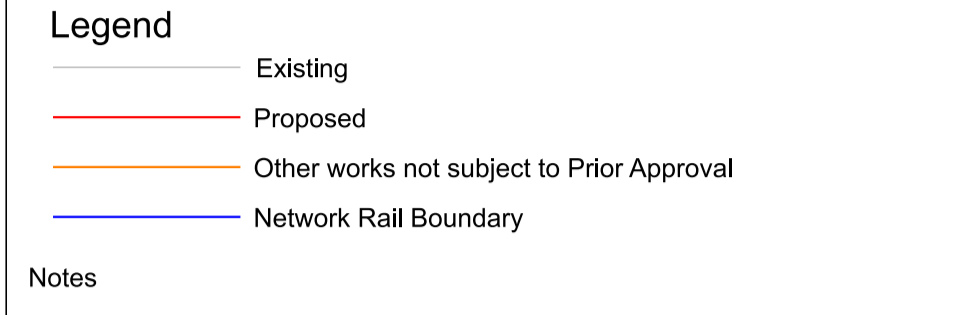
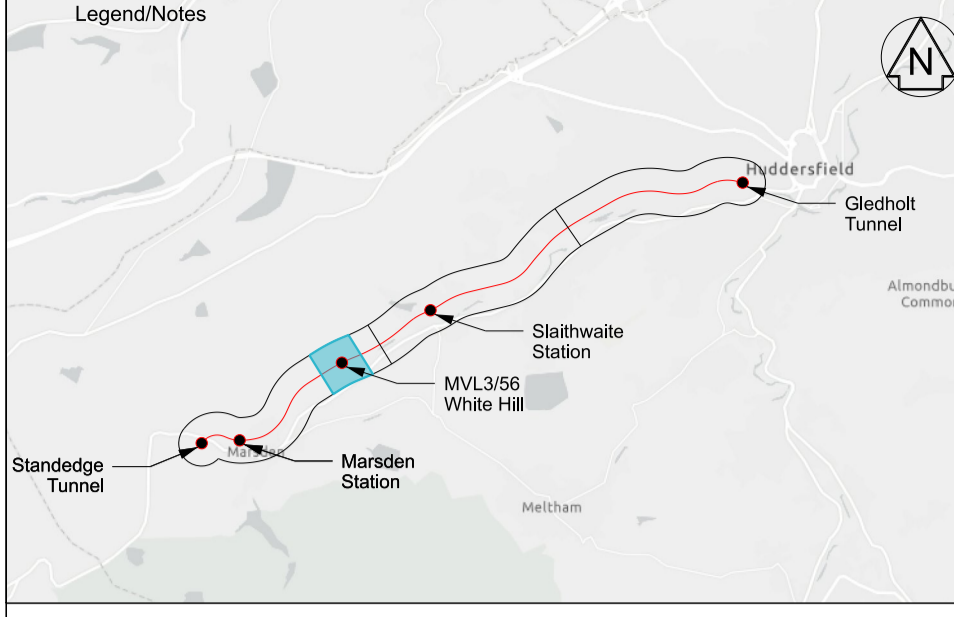
Photo 2
(Looking North West)
Scale N.T.S



Section A-A
Scale 1:100



Section B-B
Scale 1:100



Rev	Date	Description of Revisions	Drawn	Chkd	Appr	Suitability
P01	21/11/25	First Issue				CB GM
P02	14/01/26	For Issue				LC GM TL

Status: **S2**

Fit for Information

Authorised	Signed	Date
Contractor(s) Tony Gee & Partners LLP		
Location STALYBRIDGE STN - HEATON LODGE JN (HUDD-MANC LINE)		
Type Drawings	Sub-type Planning	
Role Town and Country Planner	Sub-Role General	
Zone Marsden		
Phasing Existing	Project Stage FACE 2 ES4	
Project Transpennine Route Upgrade		
Contract No. 167037		
Contract Title 2BC Stalybridge to Huddersfield		
Drawing Title Prior Approval - MVL3/56 White Hill (Ex Booths) - Existing and Proposed General Arrangement		
Designed	Signed	Date
Drawn	Signed	Date
Checked	Signed	Date
Approved	Signed	Date
Scale(s) As Shown		ELR & Mileage 20 to 0
Alternative Reference		Sheet of Revision P02
Drawing Number 167037-TGP-54-MVL3-DRG-T-LP-165600		

Published

Published

Published

Published

Published

Published