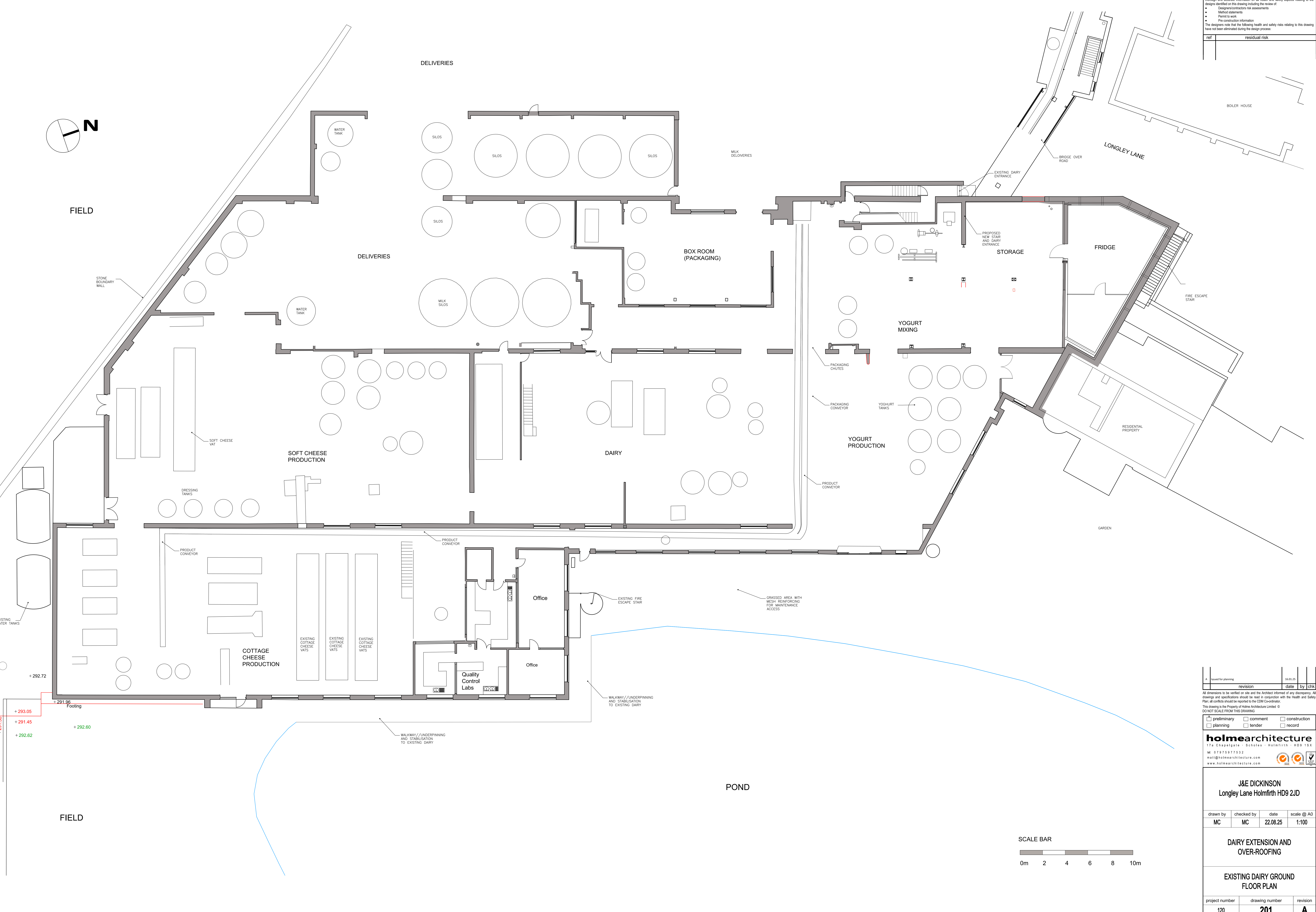
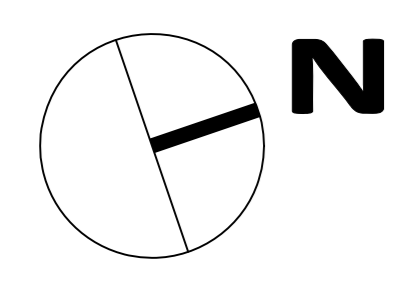


Construction staff and operatives must ensure the principal contractor has provided thorough and accurate information on all health and safety aspects relating to the design identified on this drawing including the review of:

- Design/contractor risk assessments
- Method statements
- Permit to work
- Pre construction information

The designers note that the following health and safety risks relating to this drawing have not been eliminated during the design process:

ref	residual risk



revision	date	by

All dimensions to be verified on site and the Architect informed of any discrepancy. All drawings and specifications should be read in conjunction with the Health and Safety Plan; all conflicts should be reported to the CDM Coordinator. This drawing is the Property of Holme Architecture Limited. © DO NOT SCALE FROM THIS DRAWING.

holmearchitecture
 17a Chapelgate · Scholes · Holmfirth · HD9 1SX
 Tel: 01475 775332
 mail@holmearchitecture.com
 www.holmearchitecture.com

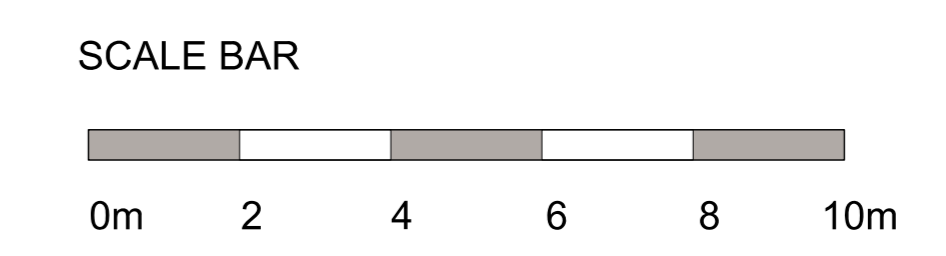
J&E DICKINSON
 Longley Lane Holmfirth HD9 2JD

drawn by	checked by	date	scale @ A0
MC	MC	22.08.25	1:100

DAIRY EXTENSION AND OVER-ROOFING

EXISTING DAIRY GROUND FLOOR PLAN

project number	drawing number	revision
120	201	A



1:100
 17a Chapelgate · Scholes · Holmfirth · HD9 1SX
 Tel: 01475 775332
 mail@holmearchitecture.com
 www.holmearchitecture.com
 J&E DICKINSON
 Longley Lane Holmfirth HD9 2JD
 120
 201
 A