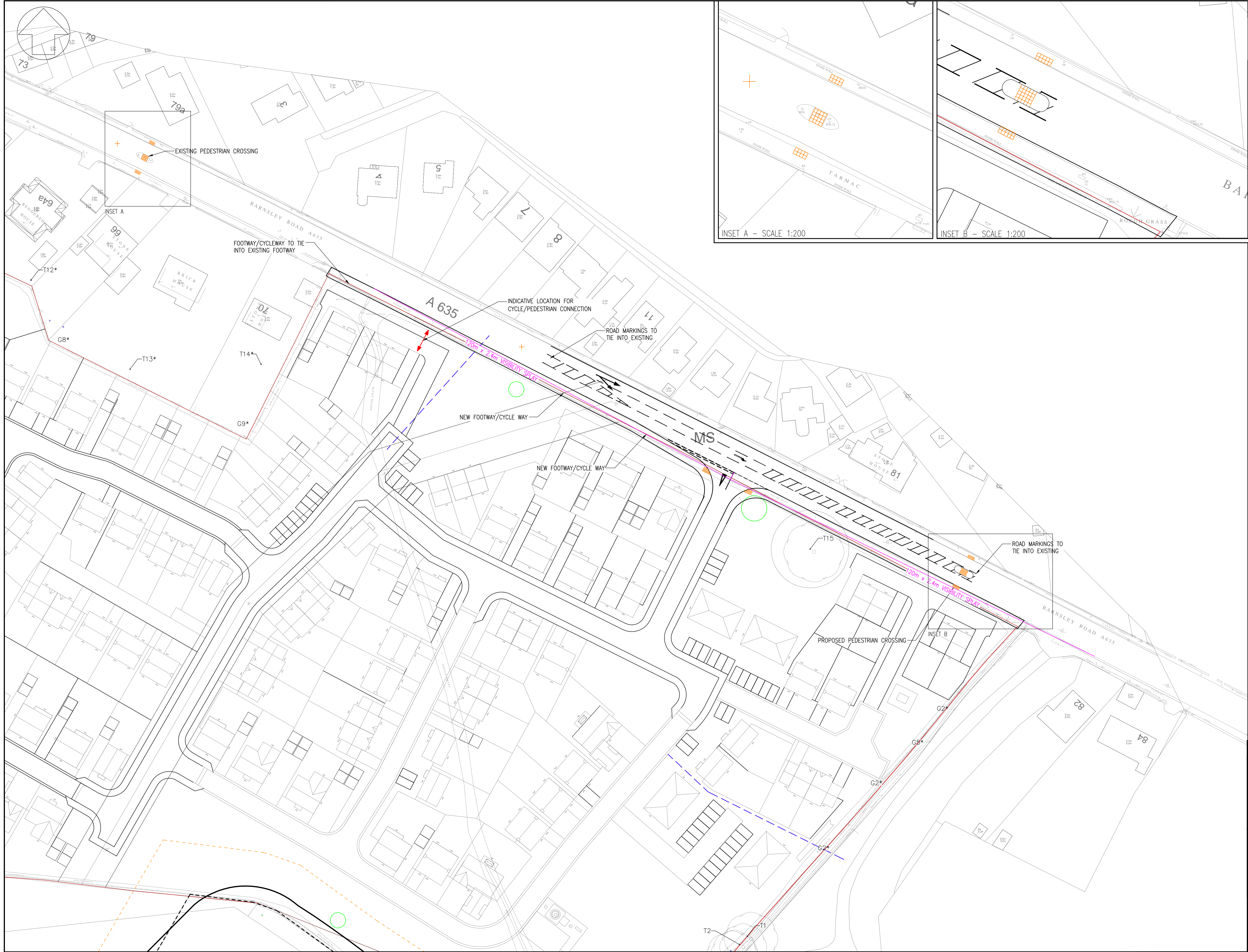
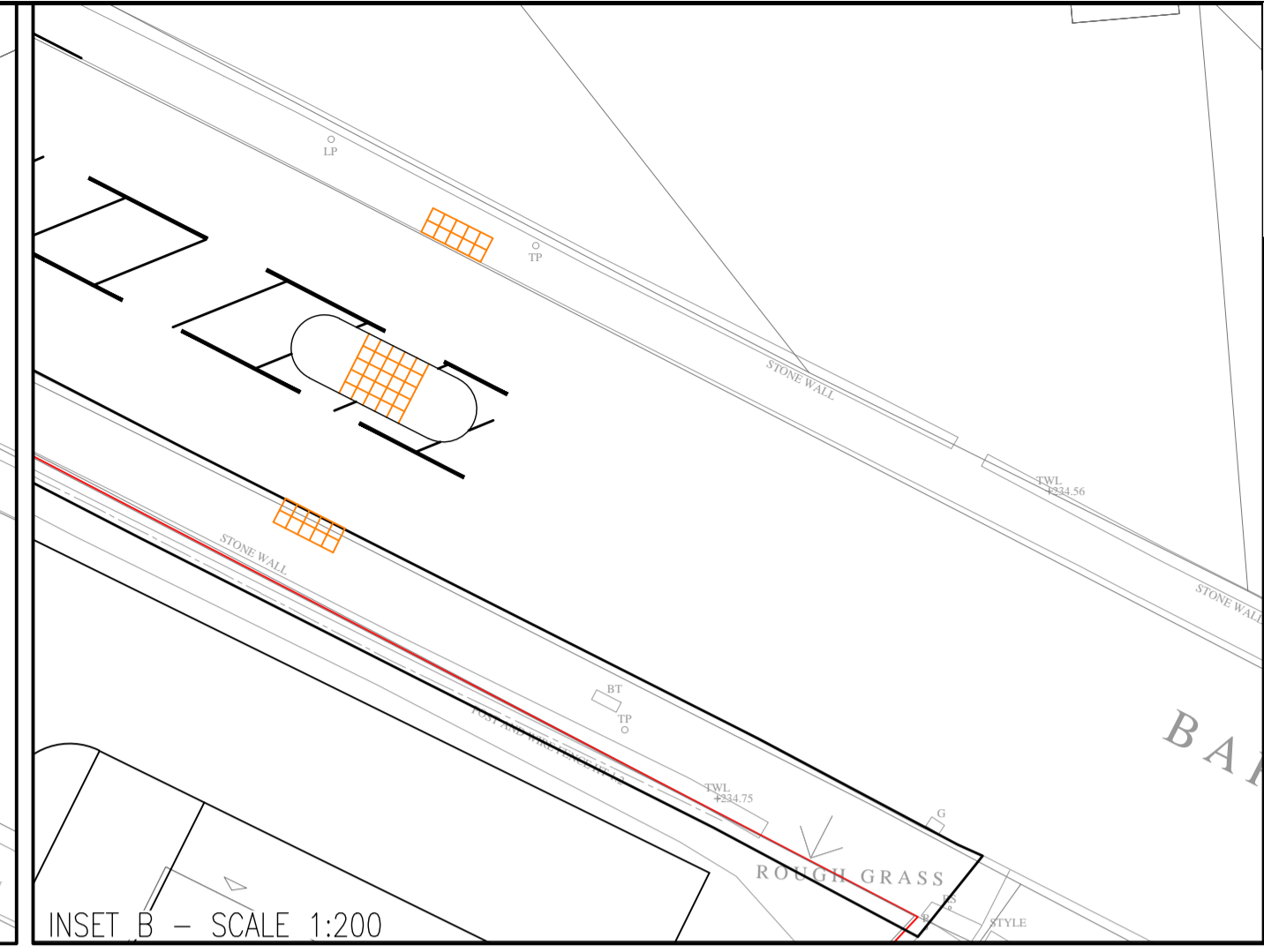
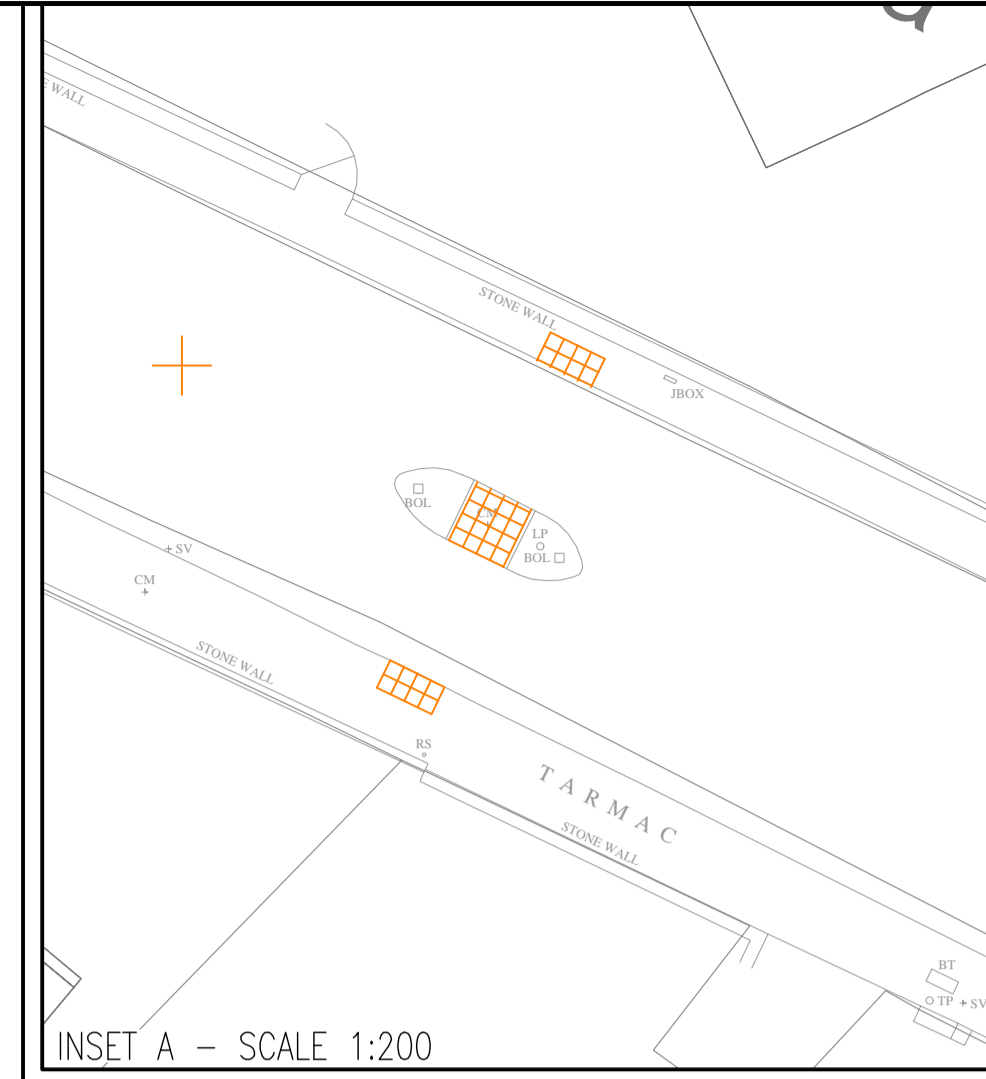


DO NOT SCALE

KEY  
TACTILE PAVING



PO2	22/7/25	AS	REVISED LAYOUT AND AMENDMENTS	TL
PO1	07/07/25	AS	FIRST ISSUE	TL
REV	DATE	BY	DESCRIPTION	APP

DRAWING STATUS: S0 - WORK IN PROGRESS



SITE PROJECT: PROPOSED RESIDENTIAL DEVELOPMENT UPPER CUMBERWORTH  
 TITLE: ACCESS LAYOUT AND VISIBILITY SPLAYS

DRAWN: AS	APPROVED: TL
SCALE @ A1: 1:500	DATE: July 25
DRAWING No: 2501801	REV: P02