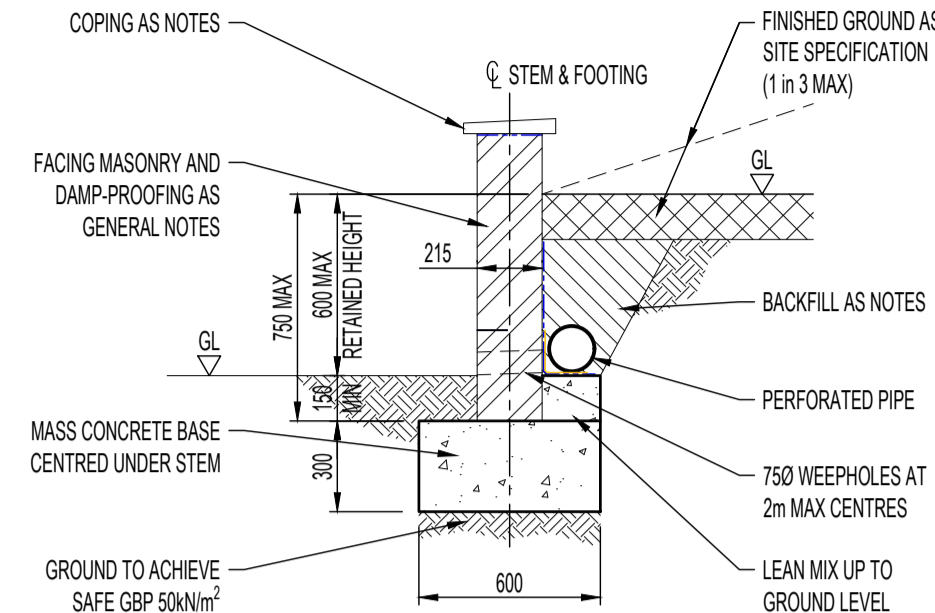
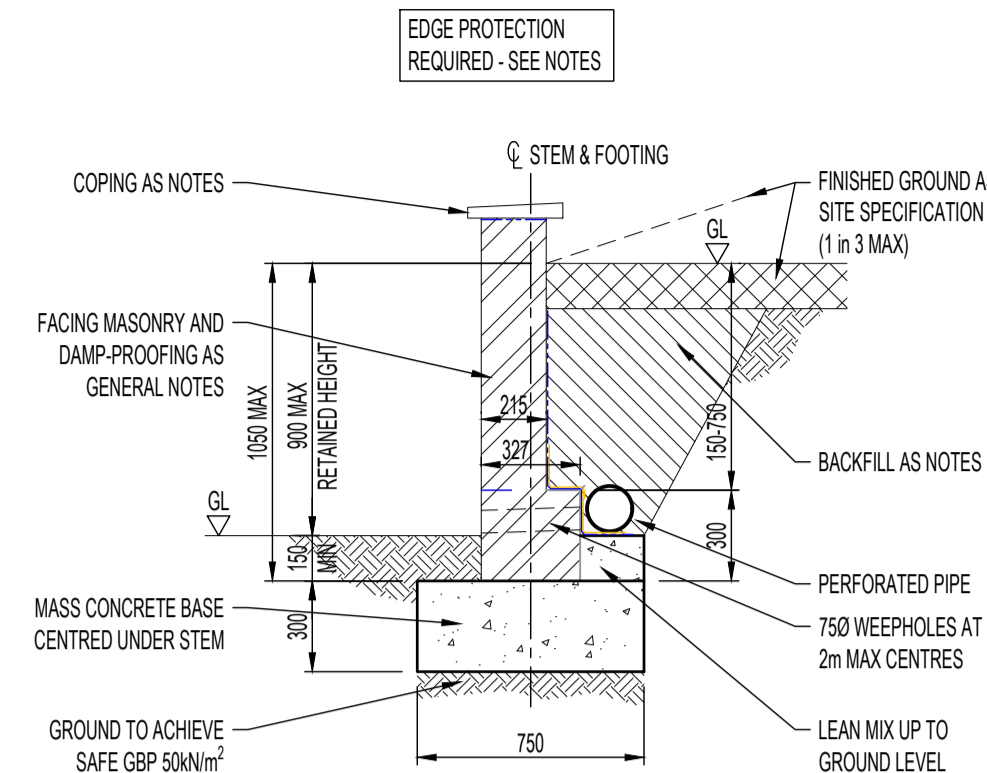


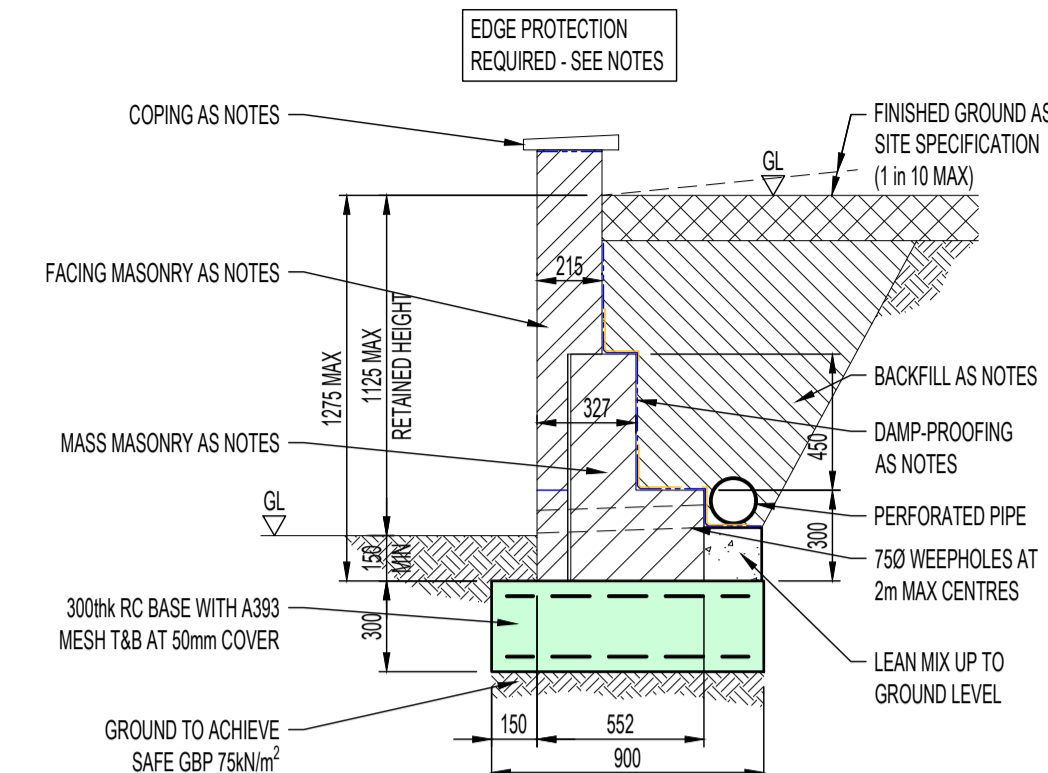
**TYPE 0 RETAINING WALL**  
SCALE 1:25



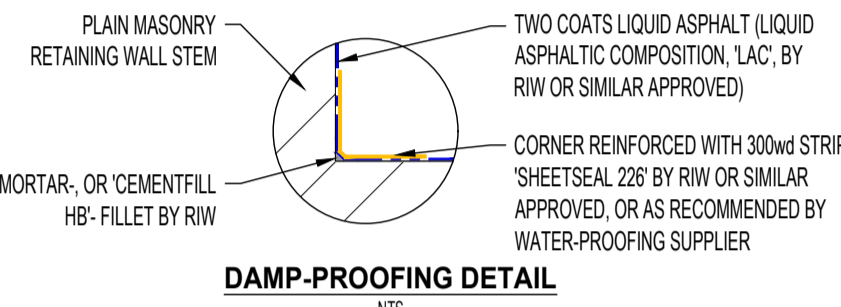
**TYPE 1 RETAINING WALL**  
SCALE 1:25



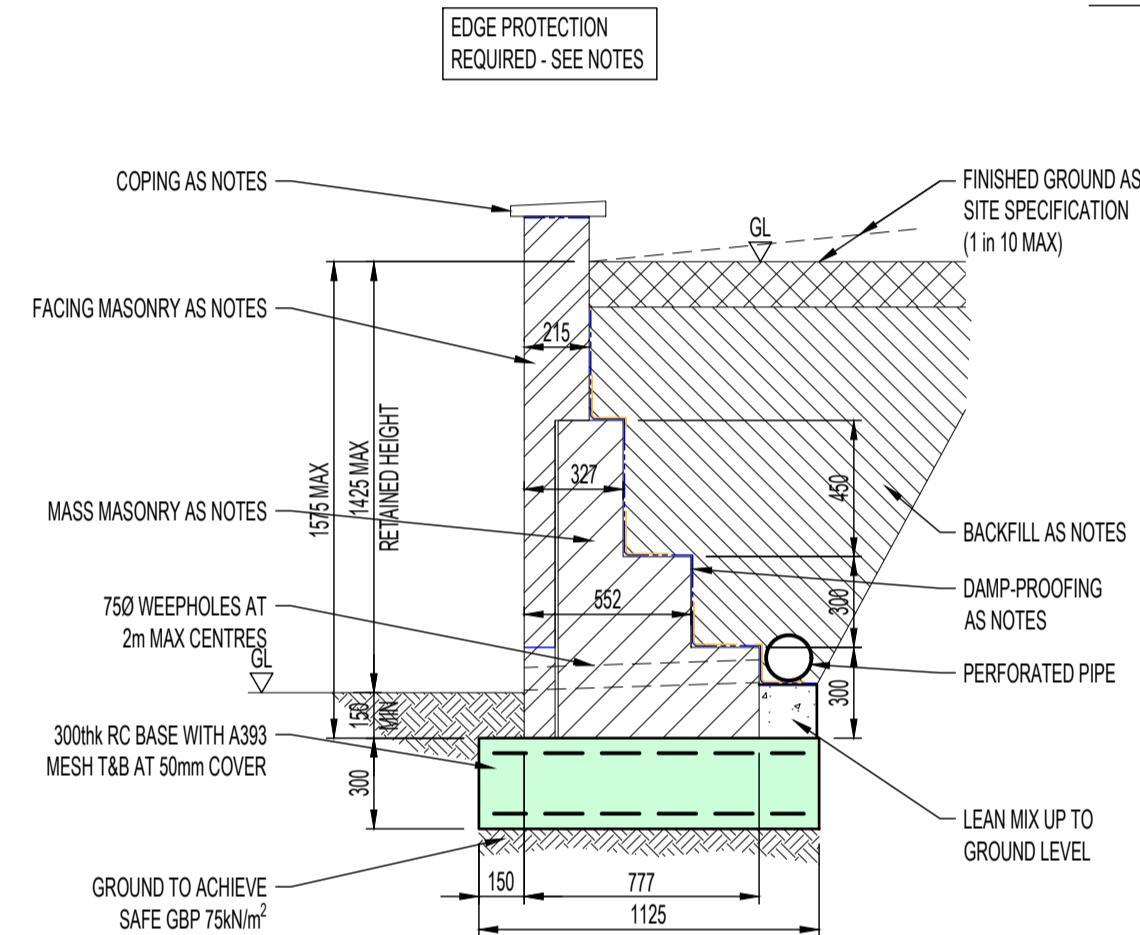
**TYPE 2 RETAINING WALL**  
SCALE 1:25



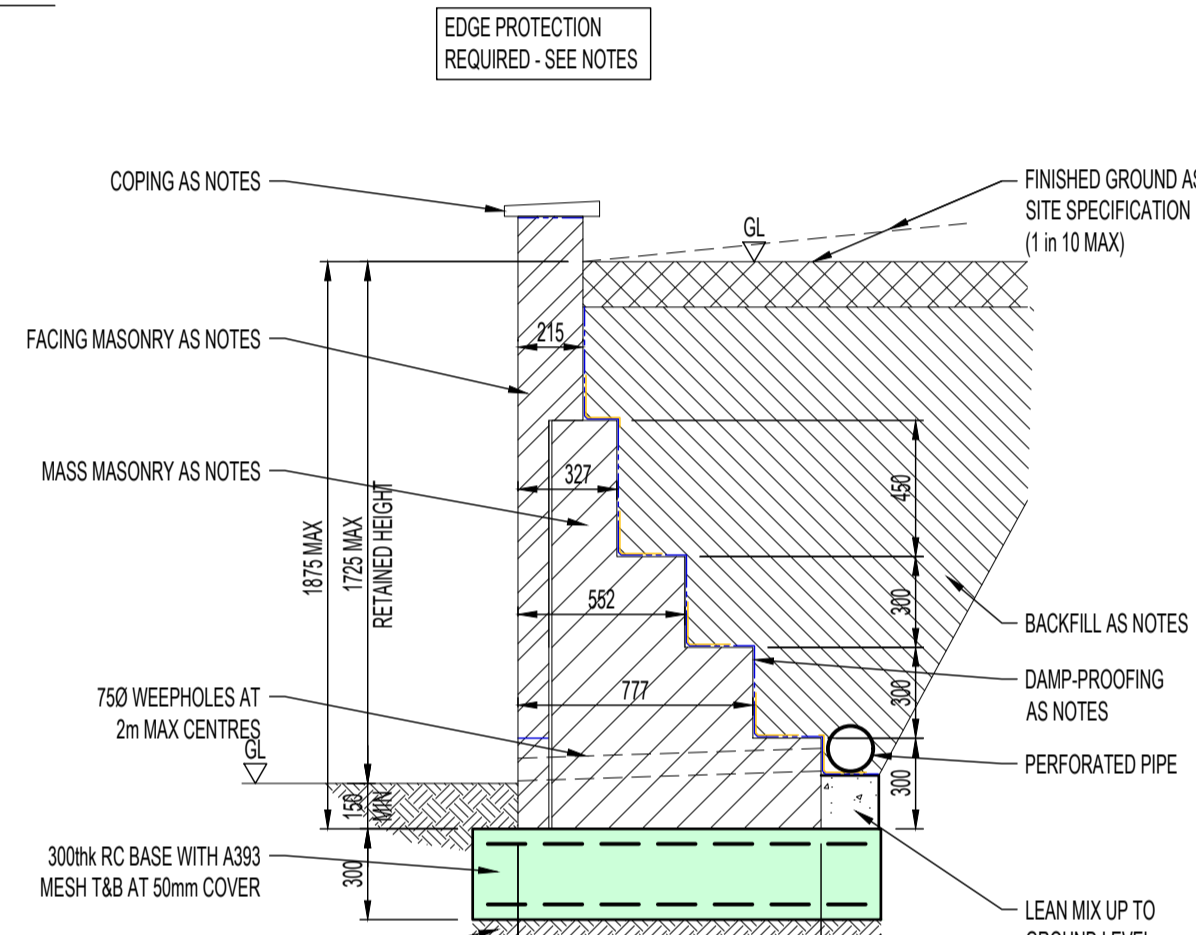
**TYPE 3 RETAINING WALL**  
SCALE 1:25



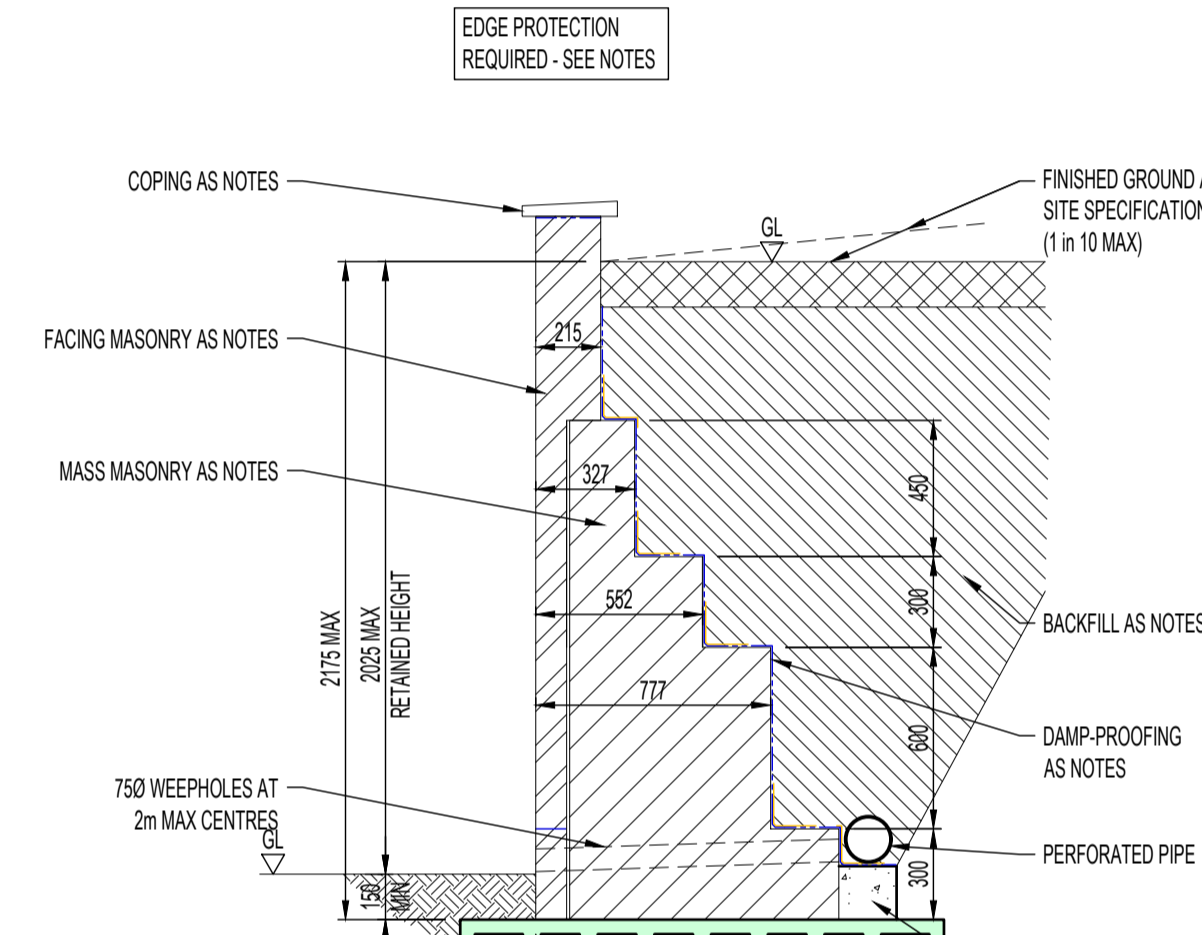
**DAMP-PROOFING DETAIL**  
N/S



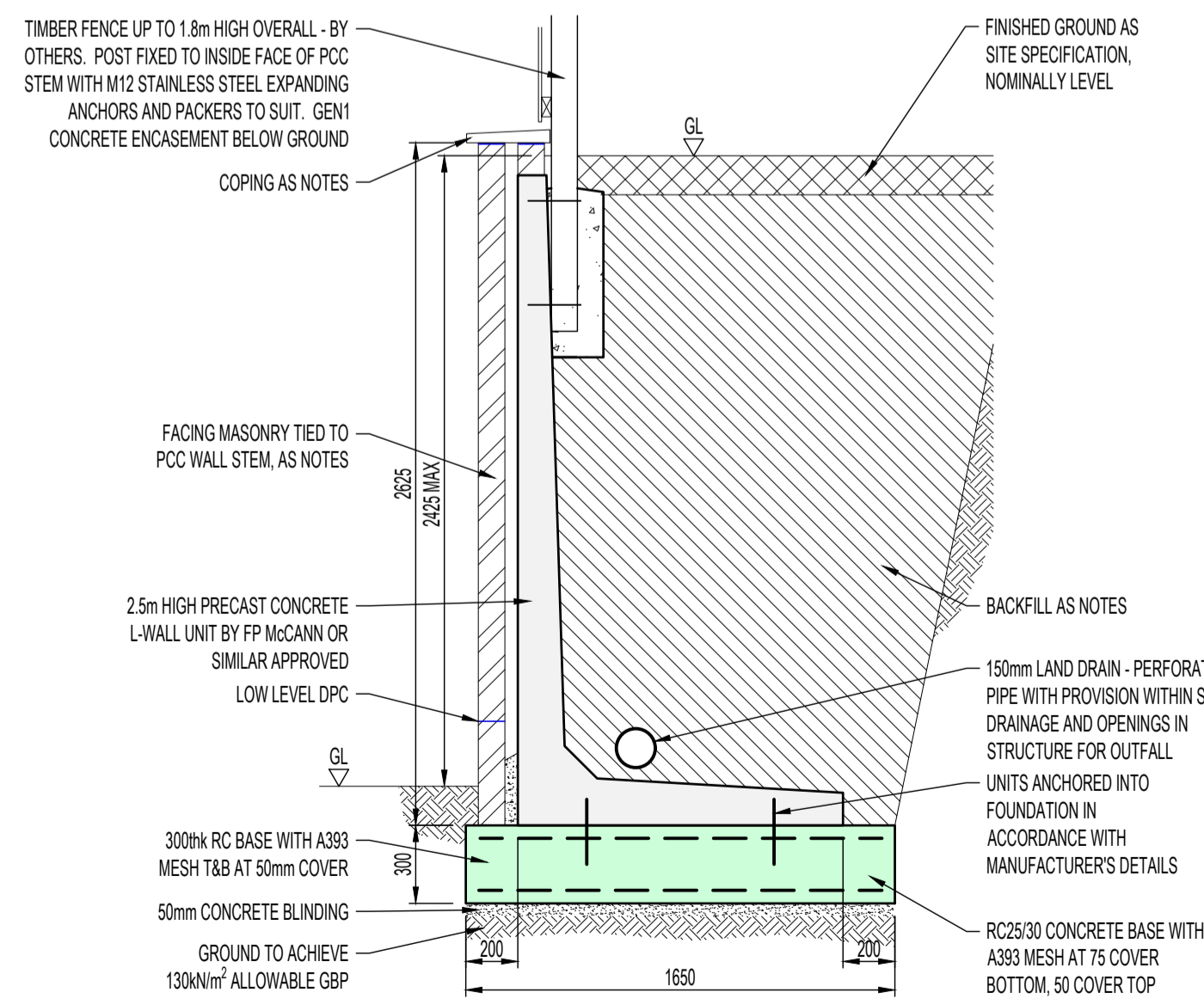
**TYPE 4 RETAINING WALL**  
SCALE 1:25



**TYPE 5 RETAINING WALL**  
SCALE 1:25



**TYPE 6 RETAINING WALL**  
SCALE 1:25



**TYPE 7 RETAINING WALL**  
SCALE 1:25

- NOTES:**
- ALL CONCRETE TO BE GRADE GEN1 FOR UNREINFORCED STRIP AND TRENCH FILL FOOTINGS & RC25/30 FOR REINFORCED BASES. OVERSITE CONCRETE OR BLINDING TO BE MINIMUM 50mm THICK GRADE GEN1. TIMBER POST FOUNDATION TO BE GRADE GEN1. ALL CONCRETE TO BS 8500-1.
  - FOUNDATIONS TO BEAR ON NATURAL GROUND ACHIEVING MINIMUM SAFE GROUND BEARING PRESSURE AS NOTED ON DETAILS.
  - BACKFILL BEHIND WALL WITH SULFATE FREE GRANULAR MATERIAL - CLASS 6N OR 6P AND COMPACTED IN ACCORDANCE WITH SPECIFICATION FOR HIGHWAY WORKS.
  - WALL STEM FACING TO CONSIST OF FROST RESISTANT BRICK WITH GRADE (i)M6 MORTAR BELOW DPC AND NORMAL FACING BRICKWORK WITH GRADE (ii)M4 MORTAR ABOVE. LOW LEVEL DPC (AT 150mm ABOVE LOWER GROUND LEVEL) NOT REQUIRED IF FROST-RESISTANT BRICK ADOPTED FULL HEIGHT.
  - MOVEMENT JOINTS IN FACING MASONRY TO BE PROVIDED AT 12m MAX CENTRES IN BRICKWORK, 6m MAX IN ARTSTONE. 15mm MOVEMENT JOINT WITH 15x15mm POLYSULPHIDE SEALANT BACKED WITH COMPATIBLE FILLER.
  - TO TIE FACING BRICK TO MASS MASONRY, PROVIDE STAINLESS STEEL TYPE 1 WALLS TIES 150g AT 900x450mm CENTRES.
  - TO TIE FACING BRICK TO PCC CONCRETE WALL STEM, PROVIDE STAINLESS STEEL FRAME CRAMPS 150g AT 900x450mm CENTRES. ANCON 'SPB' OR SIMILAR.
  - COPINGS TO BE FROST RESISTANT, OVERHANG THE WALL MINIMUM 45mm EACH SIDE, AND BEDDED ON HIGH BOND DPC.
  - RETAINED FACE OF PLAIN MASONRY RETAINING WALL STEM TO BE DAMP-PROOFED WITH TWO COATS LIQUID ASPHALT (LIQUID ASPHALTIC COMPOSITION, 'LAC' BY RIV OR SIMILAR APPROVED) WITH REINFORCED CORNERS IN ACCORDANCE MANUFACTURER'S RECOMMENDATIONS. SEE ALSO INSET ON DRAWING.
  - MASS MASONRY TO CONSIST OF 140hk BLOCKS LAID FLAT (TO COURSE WITH FACING), MINIMUM 10.4N/mm² STRENGTH AND 1450kg/m³ DENSITY. GRADE (ii)M4 MORTAR.
  - EITHER PROVIDE KNEE-RAIL FENCE, GUARD RAIL, OR BUILD-UP BRICKWORK TO PROVIDE EDGE PROTECTION. ALTERNATIVELY, SET FENCE POSTS BACK FROM WALL FACE SUCH THAT FENCE IS INDEPENDENT OF WALL. MASONRY WALL STEM NOT SUITABLE TO DIRECTLY SUPPORT SOLID FENCES OF ANY HEIGHT.

RETAINING WALL SUMMARY				
CONSTRUCTION	TYPE	RETAINED HEIGHT (m)	GROUND	SURCHARGE LOAD
FLAG-ON-EDGE	0	0 - 0.40	50kN/m² ALLOWABLE GBP	2.5kN/m² LEVEL BACKFILL
MASS MASONRY	1	0 - 0.60	50kN/m² ALLOWABLE GBP	5kN/m² LEVEL BACKFILL, OR 2.5kN/m² 1 in 3 BACKFILL
	2	0.5 - 0.9	75kN/m² ALLOWABLE GBP	10kN/m² 1 in 10 BACKFILL
	3	0.9 - 1.1		
	4	1.1 - 1.4		
	5	1.4 - 1.7		
	6	1.7 - 2.0		
PCC L-WALL	7	2.425		

Rev	Date	Amendments	By
A	12.12.25	Wall Types 0 & 6 added; Drawing title, notes & table amended accordingly	ASH
Drawing Status:			
<b>TENDER PACK</b>			
<b>FORTEM</b>			
FORTEM Structures Ltd E info@fortemstructures.co.uk W www.fortemstructures.co.uk			
Client:			
<b>MILLER HOMES</b>			
Project:			
<b>HERMITAGE PARK, LEPTON</b>			
Drawing Title:			
<b>STANDARD RETAINING WALL DETAILS</b>			
Drawn:	ASH	Scale:	1:25 @ A1
Checked:		Date:	DEC 2025
Drawing No.	51233-DR-200		Rev. A