

Front View



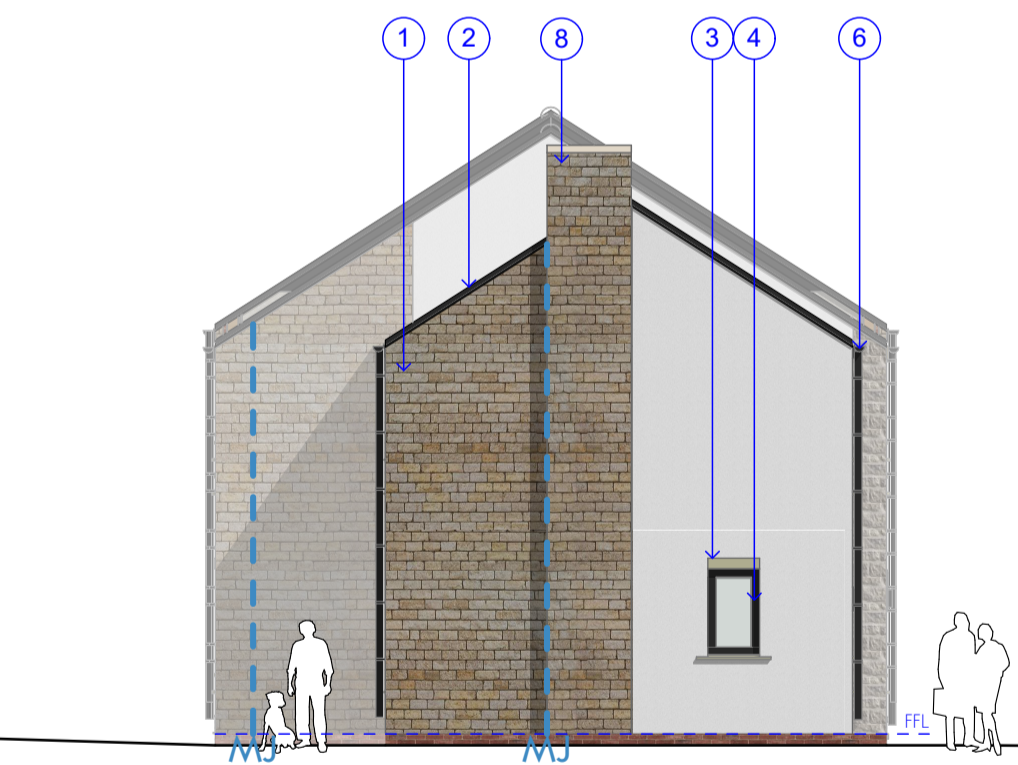
E-01 Elevation



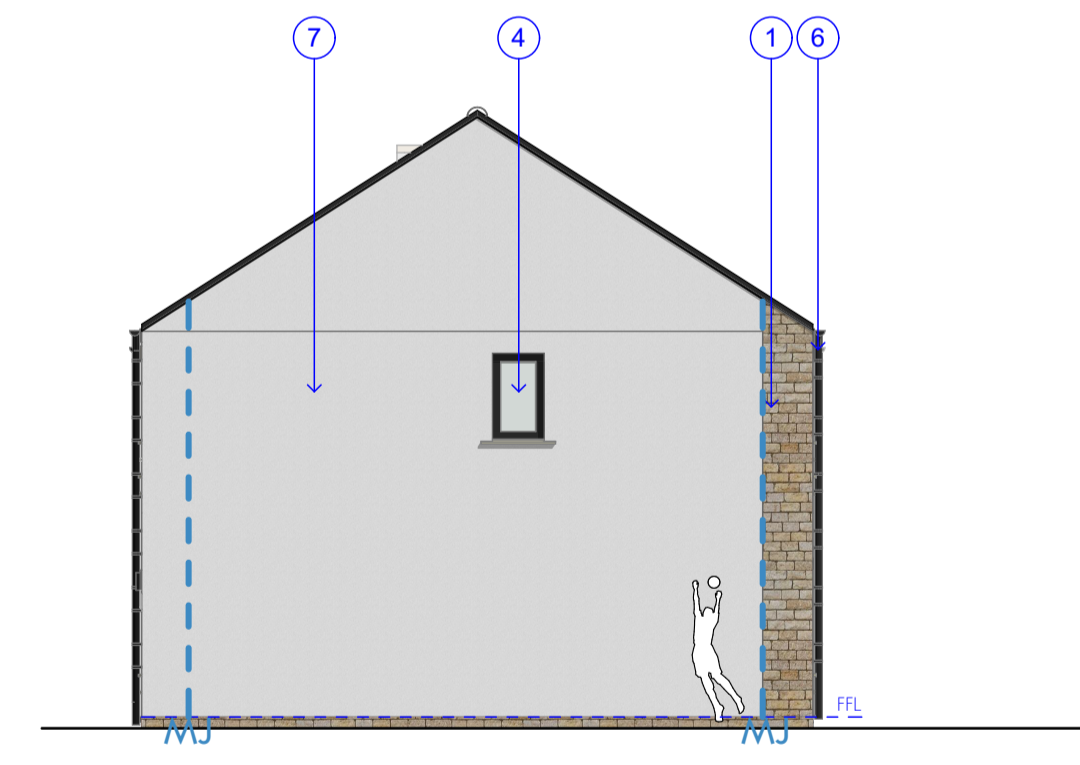
E-02 Elevation



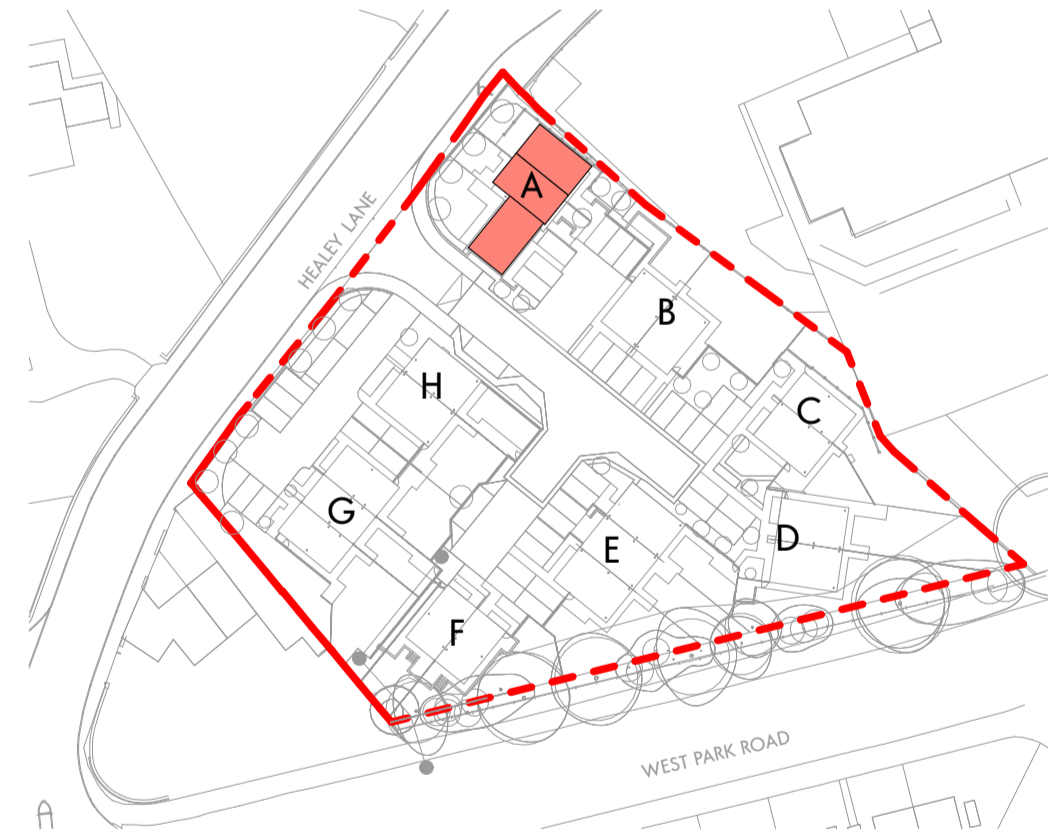
Back View



E-03 Elevation



E-04 Elevation



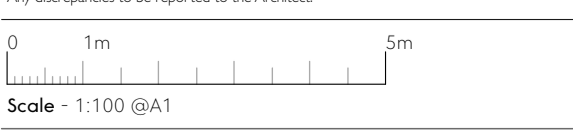
Location Key

- Notes:**
- Internal road layout revised to suite highway sectional approval (visibility plays to central junction adjusted).
 - Plot A moved by circa 400mm towards N-E and circa 100mm towards S-W to suite retaining wall engineering.
 - Site levels and FFL have been adjusted to reduce landfill/cut, and to suite the as designed adopted highways and site drainage.
 - Changes to boundary treatments to following the revised levels
 - Windows adjusted following building regulations Part O (overheating) assessment. First floor bedroom windows now with double opening sashes (for purge ventilation).



- Light sandstone cladding.
- Dark grey slate roof tiles.
- Sandstone art-stone for head and cill.
- Windows & back door uPVC in dark grey colour.
- Composite door.
- UPVC downpipes and gutters, with matching fascia, black colour.
- Render, colour TBC.
- Feature chimney.

This drawing is the property of GWP Architects. Copyright is reserved by them and the drawing is issued on the condition that it is not copied, reproduced, stored or disseminated in any form or by any means, electronic, mechanical, photocopying, recording, or by any information storage and retrieval system, without the consent in writing of GWP Architects. All drawings and specifications should be read in conjunction with the project health and safety plan. Any possible conflicts should be generated to the Planning Consultant. All work to be carried out in accordance with current Building Regulations. Contractors must verify all dimensions at the job before commencing any work or making shop drawings. Written dimensions should be taken. Do not scale off drawing. Do not take digital dimensions from the drawing. Any discrepancies to be reported to the Architect.



| Rev | Date | Comment | Dr | Ch |
|-----|----------|-------------------------------|----|----|
| C07 | 03.12.25 | Issue for 5/3 | | |
| C06 | 17.11.25 | Update to corner stone return | | |
| C05 | 11.11.25 | Minor box setting out | | |
| C04 | 16.09.25 | General Update | | |
| C03 | 31.07.25 | General Update | | |
| C02 | 04.07.25 | General Revision | | |
| C01 | 27.05.25 | First Issue | | |

| | |
|----------------|----------------------------------|
| Client | (557)2405 Healey Lane, Batley |
| Job Title | Block A Architectural Drawings |
| Name | 2405-GWP-00-00-D-A-(00)-0015 |
| Scale | 1:100@A1 |
| Revision | C07 |
| Drawn/Checked | MK / DT |
| First Issue | 27.06.25 |
| Drawing Status | Technical Design - A04 |

CHARTERED ARCHITECTS
INTERIOR DESIGNERS
SPACE PLANNERS
PROJECT MANAGERS
LANDSCAPE ARCHITECTS

03 01 Tower Works, 2 Gladwin Road, Holbeck Leeds LS11 5QC
+44(0)113 264 6544 (r) +44(0)113 268 1839 (f)
architects@gwp-arch.com | www.gwp-arch.com