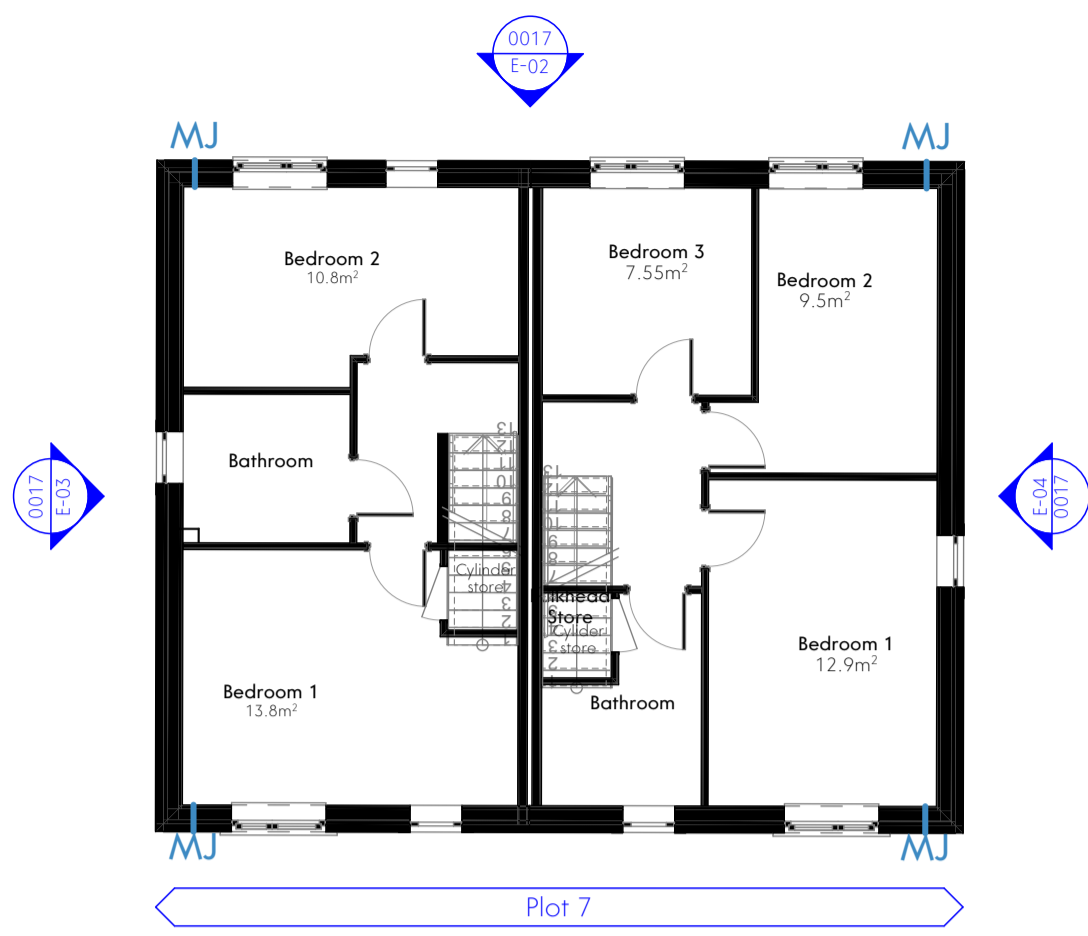
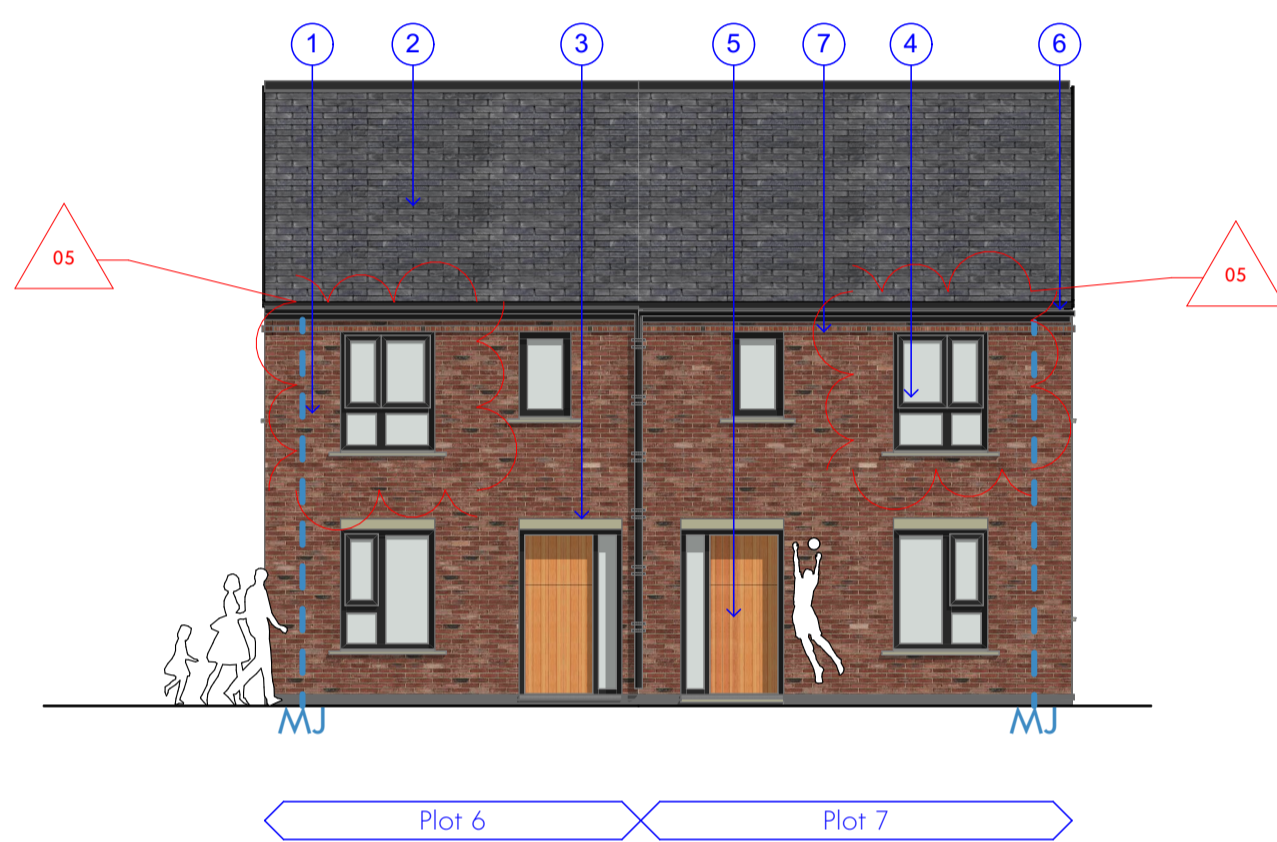


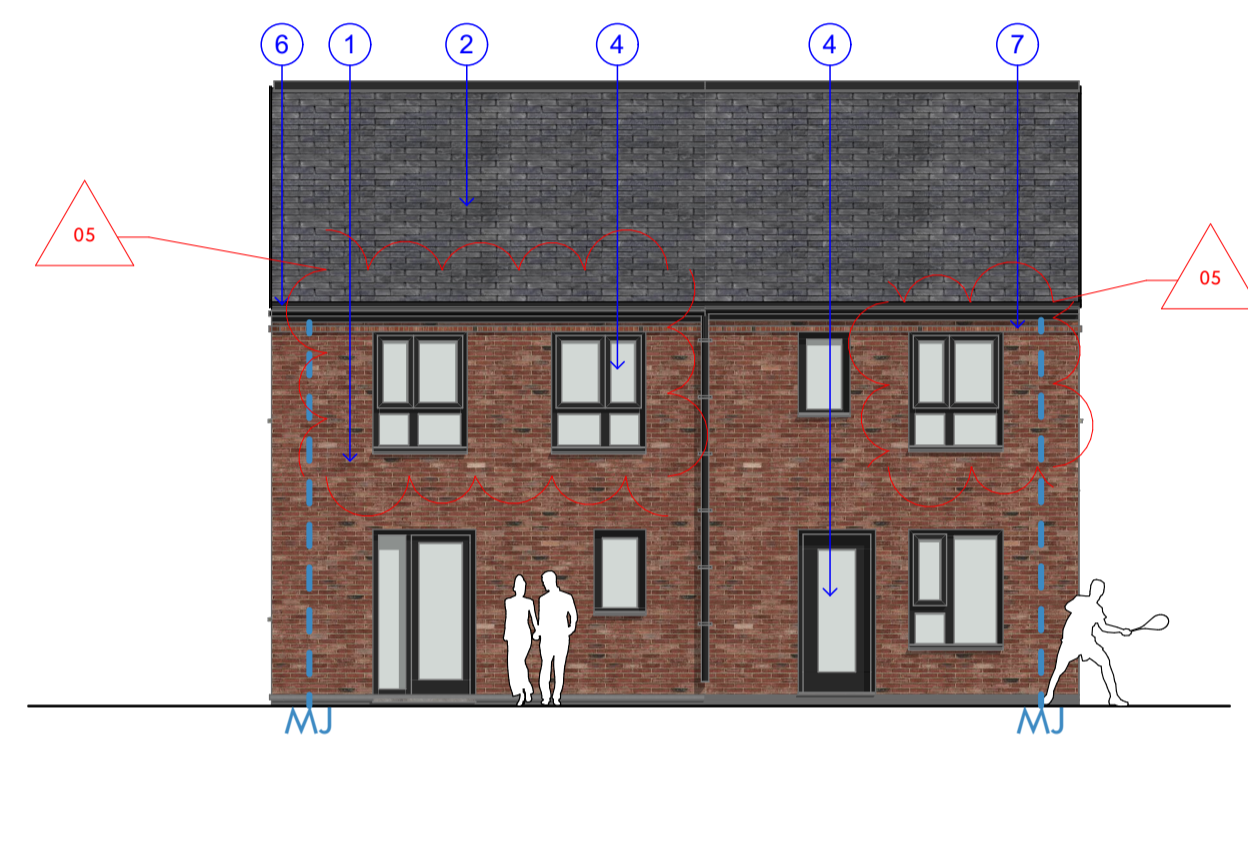
Ground Floor Plan



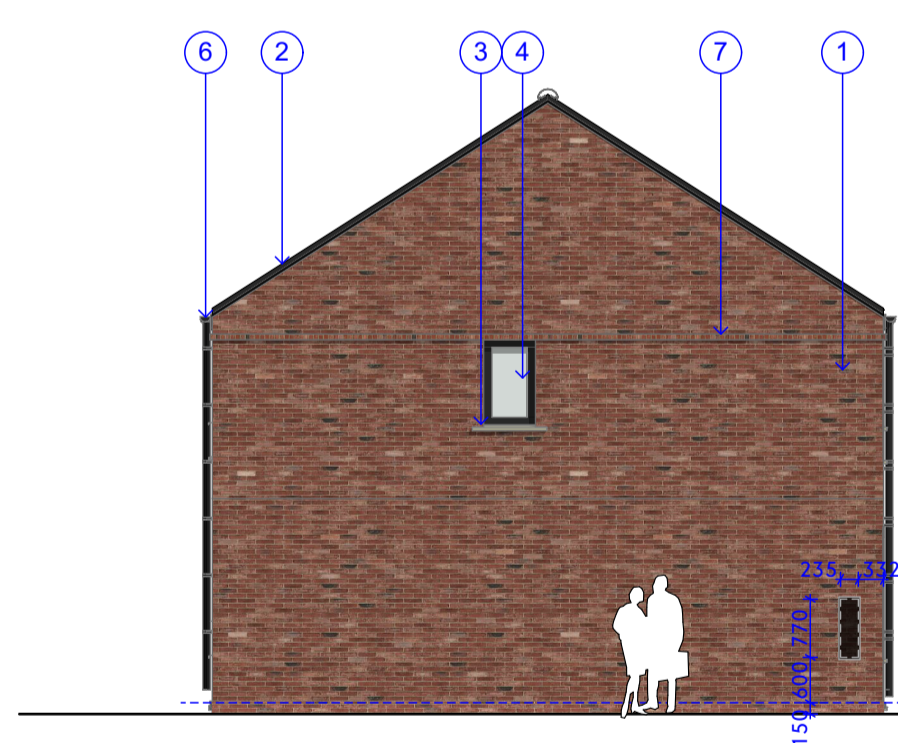
First Floor Plan



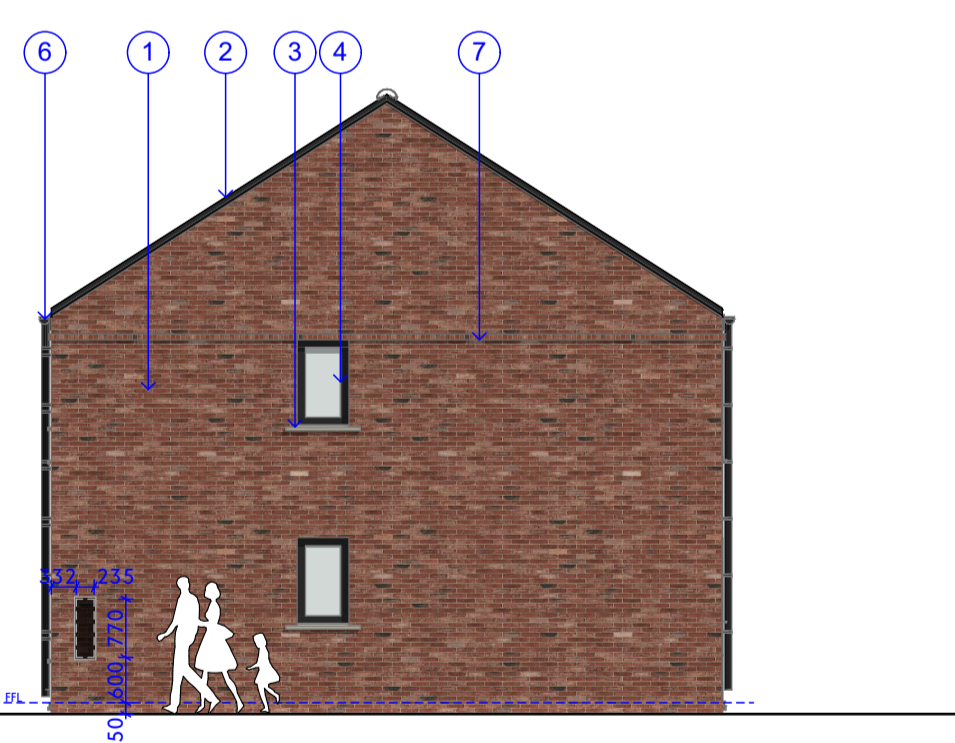
E-01 Elevation



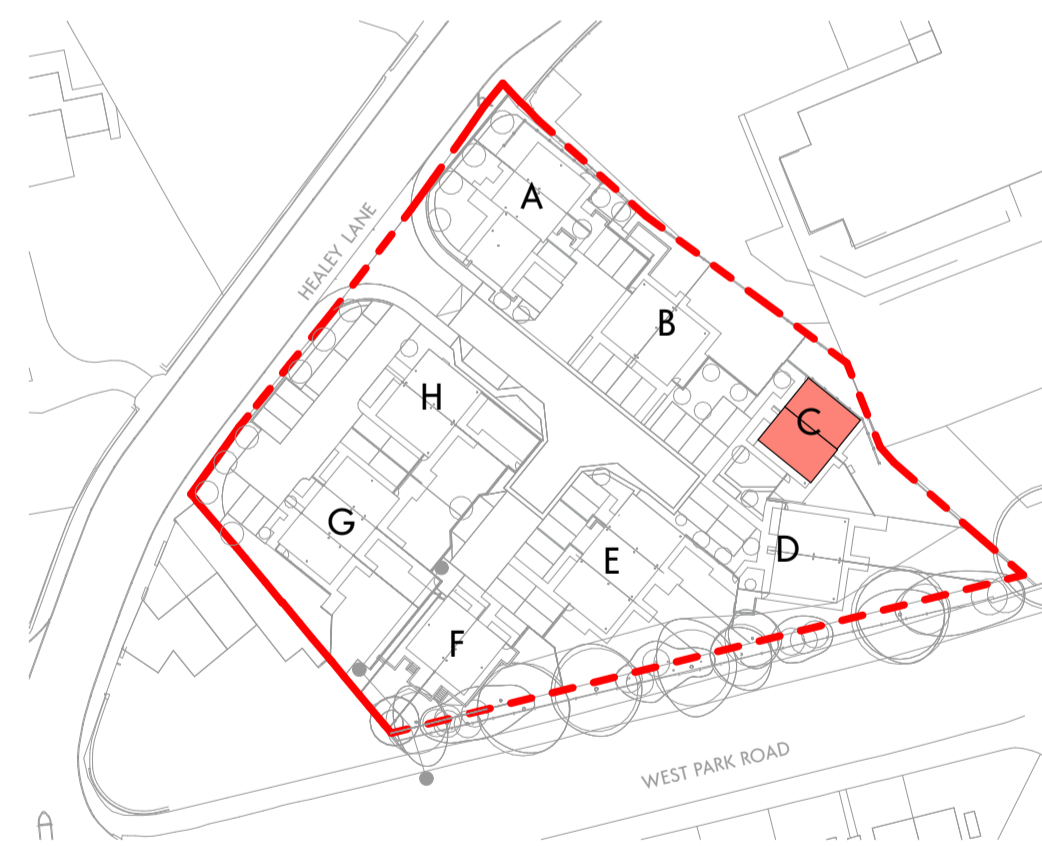
E-02 Elevation



E-03 Elevation



E-04 Elevation



Location Key



Front View



Back View

- Notes:**
- Internal road layout revised to suite highway sectional approval (visibility splays to central junction adjusted).
 - Plot A moved by circa 400mm towards N-E and circa 100mm towards S-W to suite retaining wall engineering.
 - Site levels and FFL have been adjusted to reduce landfill/cut, and to suit the as designed adopted highways and site drainage.
 - Changes to boundary treatments to following the revised levels
 - Windows adjusted following building regulations Part O (overheating) assessment. First floor bedroom windows now with double opening sashes (for purge ventilation).



- Red brick.
- Dark grey slate roof tiles.
- Sandstone art-stone for head and cill.
- Windows & back door uPVC in dark grey colour.
- Composite door.
- UPVC downpipes and gutters, with matching fascia, black colour.
- Brick string course.

MJ - Movement Joints, indicative. See structural engineers drawing.

The drawing is the property of GWP Architects. Copyright is reserved by them and the drawing is issued on the condition that it is not copied, reproduced, stored or disseminated in any form or by any means, electronic, mechanical, photocopying, recording, or by any information storage and retrieval system, without the consent in writing of GWP Architects. All drawings and specifications should be read in conjunction with the project health and safety plan. Any possible conflicts should be generated to the Planning Consultant. All work to be carried out in accordance with current Building Regulations. Contractors must verify all dimensions at the job before commencing any work or making shop drawings. Written dimensions should be taken. Do not scale off drawing. Do not take digital dimensions from the drawing. Any discrepancies to be reported to the Architect.



Rev	Date	Comment	Dr	Ch
C07	01.12.25	Issue for 573		
C06	11.11.25	Minor issue setting out		
C05	29.10.25	General Update	MK	DT
C04	16.09.25	General Update	MK	DT
C03	31.07.25	General Update	MK	DT
C02	04.07.25	General Revision	MK	DT
C01	27.05.25	First Issue	MK	DT

Client	Healey Lane, Batley
Job Title	Block C Architectural Drawings
Drawn/Checked	MK / DT
First Issue	27.06.25
Drawing Status	Technical Design - A04

Name	2405-GWP-00-00-D-A-(00)-0017
Scale	1:100@A1
Revision	C07



CHARTERED ARCHITECTS
INTERIOR DESIGNERS
SPACE PLANNERS
PROJECT MANAGERS
LANDSCAPE ARCHITECTS

03.01 Tower Works, 2 Gladstone Road, Holbeck Leeds LS11 5QC
+44(0)113 266 6044 (t) +44(0)113 268 1819 (f)
architectural@gwp-arch.com | www.gwp-arch.com