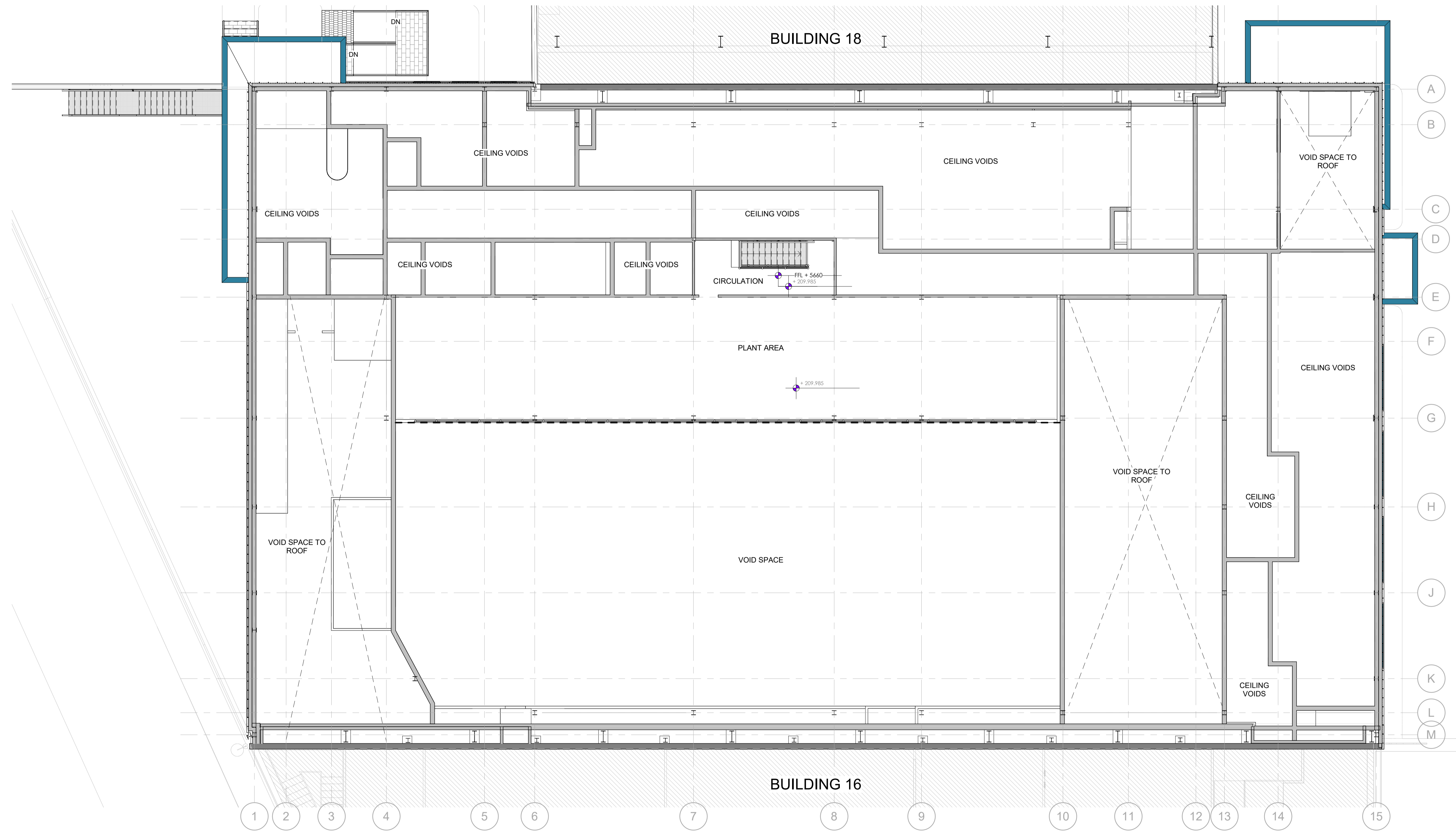


NOTES
 All dimensions and levels to be checked on site
 Any discrepancies are to be reported to the Architect before any work commences
 This drawing shall not be scaled to ascertain any dimensions, work to figured dimensions only
 This drawing shall not be reproduced without express written permission from AFL Architects Ltd.

DISCLAIMER
 When this drawing is issued in CAD, it is an uncontrolled version issued for information only, to enable the recipient to prepare their own documents/drawings for which they are solely responsible.

SOFTWARE INTEROPERABILITY
 AFL prepared this drawing using Autodesk REVIT Architecture.
 AFL does not accept liability for any loss or degradation of any information held in the drawing resulting from the translation from the original file format to any other file format or from the recipient's reading of it in any other programme.



P02 19.11.2025 SO Issued for Planning Application (LoR comments applied)
 P01 18.11.2025 SO Issued for Planning Application

rev no.	rev date	rev by	description

project
Huddersfield Pharmaceutical Unit

location
**Huddersfield Royal Infirmary
 (Acre Mill Site)**

Employer



client
**Calderdale & Huddersfield NHS
 Foundation Trust**

AFL Architects
 1st Floor
 56 Peter Street
 Manchester UK
 M2 3NQ



t: +44(0)161 236 6263
 w: www.afl-architects.com
 e: mail@afl-architects.com

key plan

drawing title
Planning - Level M1 Plan

Level M1 Proposed GA Plan - Planning
 1:100

AFL job number	scale @ A1	drawn SO	checked NP
233148	1:100	rev date	19.11.2025

draw purpose	status	rev
Review & Acceptance	S5	P02

bim project origin zone level type role 6-digit no.
HPU-AFL-17-M1-DR-A-201102