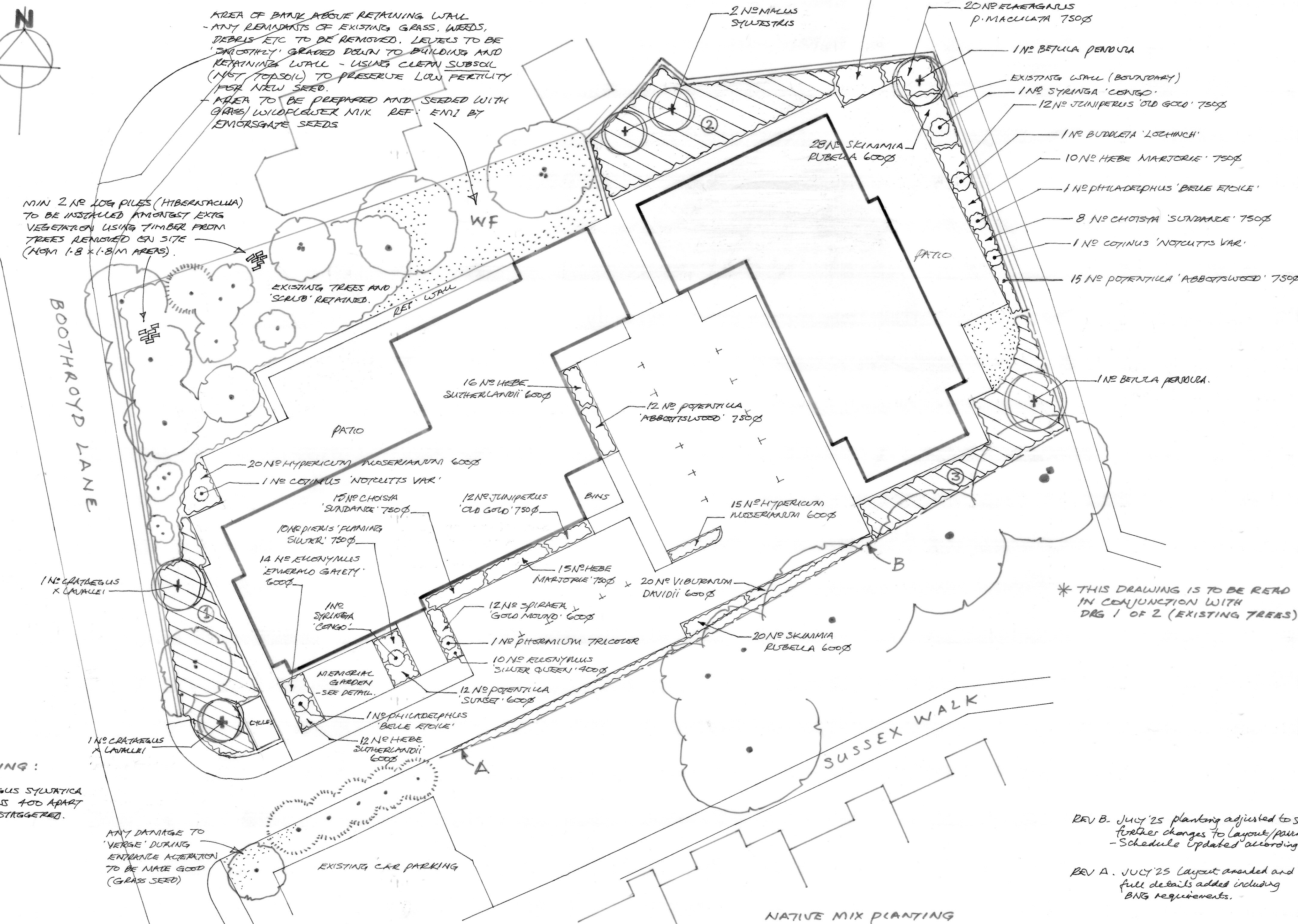
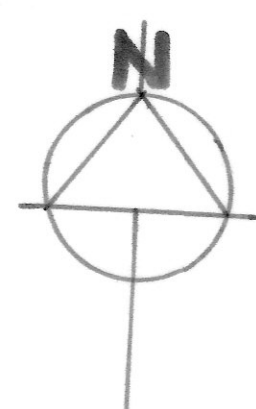


GENERAL NOTES

- THE LANDSCAPE CONTRACTOR IS TO CHECK THE POSITIONS OF ALL SERVICES (EXISTING AND 'AS-BUILT') WITH THE MAIN CONTRACTOR PRIOR TO EXCAVATING FOR TREES / SHRUBS - PARTICULARLY WHERE PLANTING OCCURS WITHIN SERVICE ZONES. CONSULT THE S.O. IF CONFLICT ARISES.
- PROPOSED TREE POSITIONS TO BE CONFIRMED BY THE STRUCTURAL ENGINEER RELATIVE TO GROUND CONDITIONS / FOUNDATION DESIGN OF BUILDINGS / EXTERNAL WALLS. CONSULT THE S.O. IF CONFLICT ARISES.
- GRASSED AREAS TO BE **GOOD QUALITY BROADLEAF TURF** - WEED-FREE CULTIVATED TURF - SEED / TURF AS SHOWN ON PLAN.
- WHERE GRASS ABUTS BUILDINGS - MOWING MARGIN TO BE TO SEPARATE ARCHITECTS DETAIL.
- A 50MM LAYER OF MEDIUM GRADE FOREST BARK MULCH (75MM MAX PARTICLE SIZE) IS TO BE SPREAD OVER ALL NEW PLANTED AREAS AT COMPLETION. SOIL GRADED SMOOTH BEFORE SPREADING. PLANTS NOT TO BE BURIED. CHECK BARK TYPE IF NECESSARY TO ENSURE CONTINUITY WITH EXISTING AREAS.
- ROUTINE MAINTENANCE FOLLOWING PRACTICAL COMPLETION (TO INCLUDE 12 MONTHS DEFECTS LIABILITY) - IN ACCORDANCE WITH SEPARATE A4 SPECIFICATION.
- **TO BE AGREED SEPARATELY AND APPROVED BEFORE PROCEEDING:**
- FOR DETAILS OF PAVINGS / WALLS / FENCES ETC - SEE ARCHITECTS DRGS.
- INFORM THE S.O. IF IT IS APPARENT THAT ANY AREAS CANNOT BE BUILT AS SHOWN - PLANT QUANTITIES / SPECIES MAY NEED ADJUSTMENT TO SUIT.
- ANY 'SURPLUS' AREAS ARE NOT TO BE TOPSOILED UNLESS AGREED IN ADVANCE TO ALLOW CORRECT PLANTS TO BE SPECIFIED - OTHERWISE ANY SUCH AREAS ARE TO BE PAVED TO ARCHITECTS DETAILS.
- FOR ADDITIONAL DETAILS OF EXISTING TREES - SEE SEPARATE ARBORICULTURAL REPORT - DRAWING 1 OF 2.

GROUNDWORKS AND TOPSOILING

- * BY MAIN CONTRACTOR UNLESS OTHERWISE AGREED.
- ANY 'ON-SITE' TOPSOIL INTENDED FOR RE-USE IS TO BE STOCKPILED FREE OF TURF / WEED / DEBRIS. QUALITY OF MATERIAL MAY INFLUENCE SUITABLE AREAS FOR RE-USE - CONSULT THE SUPERVISING OFFICER BEFORE RE-SPREADING.
- ANY EXISTING PAVING / HARD SURFACES TO BE PROPERLY REMOVED FROM AREAS TO BE LANDSCAPED. ANY VOIDS FILLED WITH CLEAN SUBSOIL OR TOPSOIL - NOT RUBBLE.
- SUBSOIL TO BE EXCAVATED AS REQUIRED TO ALLOW NEW TOPSOIL DEPTHS TO BE PROVIDED.
- ANY SURPLUS MATERIAL ARISING FROM THE ABOVE OPERATIONS TO BE DISPOSED OF AS DIRECTED BY THE SUPERVISING OFFICER.
- BASE OF EXCAVATIONS TO BE PROPERLY DECOMPACTED TO ALLOW FREE DRAINAGE - WATERLOGGED AREAS AT COMPLETION WILL NOT BE ACCEPTED.
- IN THE VICINITY OF EXISTING TREES (BENEATH CANOPY SPREAD) - WORKS ARE TO BE CARRIED OUT BY HAND TO PREVENT UNDUE DAMAGE TO ROOTS. FAMILIARITY WITH B.S.5837:2005 IS ESSENTIAL. CONSULT THE SUPERVISING OFFICER IF IN DOUBT.
- SPREAD TOPSOIL TO BACKFILL AND BRING TO FINISHED LEVELS:
- SHRUB PLANTING 400 MM MIN DEPTH.
- GRASSED AREAS 100 MM MIN DEPTH.
- NATIVE WOODLAND MIX AREAS 300 MM MIN DEPTH (INC HEDGES)
- TREE PITS - BARE ROOT UP TO APPROX 14/16 SIZE 1 X 1 X 1M MIN - ROOTBALL / LARGE C.G. ABOVE 14/16 1.5 X 1.5 X 1.5M.
- ANY IMPORTED TOPSOIL TO BE TO B.S.3882 (DOCUMENTARY EVIDENCE THAT SOIL COMPLIES TO BE PROVIDED IF REQUESTED).
- TOPSOILED AREAS TO BE LEFT IN A CLEAN, EVENLY GRADED AND UNCOMPACTED STATE PRIOR TO ACCESS BY THE LANDSCAPE CONTRACTOR.
- ANY VARIATION TO THE ABOVE TO BE AGREED BEFORE WORKS BEGIN.



SCHEDULE OF PLANTING

TOTAL NO	SPECIES	SIZE	POT SIZE
65	ACER CAMPESTRE	60/75	0.G.
1	BUDOLETA 'LOCHINCH'	30/120	10
39	CHOISYA 'SUNDANCE'	30/45	3
2	COTINUS 'NOTCUTTS VARIETY'	30/120	10
70	CORNYLIUS MONSIEURINA	60/75	0.G.
14	EUCONYMIUS 'EMERALD GAIETY'	20/30	3
70	CORYLIUS AVELLANA	60/75	0.G.
10	EUCONYMIUS 'SILVER QUEEN'	15/25	2
25	HEBE 'MARTJORIE'	30/45	3
28	HEBE 'SUTHERLANDII'	20/30	3
35	HYPERICUM MOSEERIANUM	30/45	3
65	CORNYLIUS SANGUINER	60/75	0.G.
24	JUNIPERUS 'OLD GOLD'	30/45	3
2	PHILADELPHUS 'BELLE ETOILE'	30/120	10
1	PHORNIUM TRICOLOR	60/75	10
12	POTENTILLA 'SUNSET'	30/45	3
27	POTENTILLA 'ABBOTTSWOOD'	30/45	3
10	PIERIS 'PLANNING SILVER'	30/45	3
48	SKIMMIA RUBELLA	30/45	3
12	SPRAEA 'GOLD MOUND'	20/30	3
25	LIGUSTRUM VULGARE	45/60	2
2	SYRINGA 'CONGO'	30/120	10
55	VIBURNUM OPULIS	60/75	0.G.
20	VIBURNUM DAVIDII	30/45	3
195	FAGUS SYLVASTICA	75/90	0.G.
20	ELAEAGNUS P. MACULATA	30/45	3

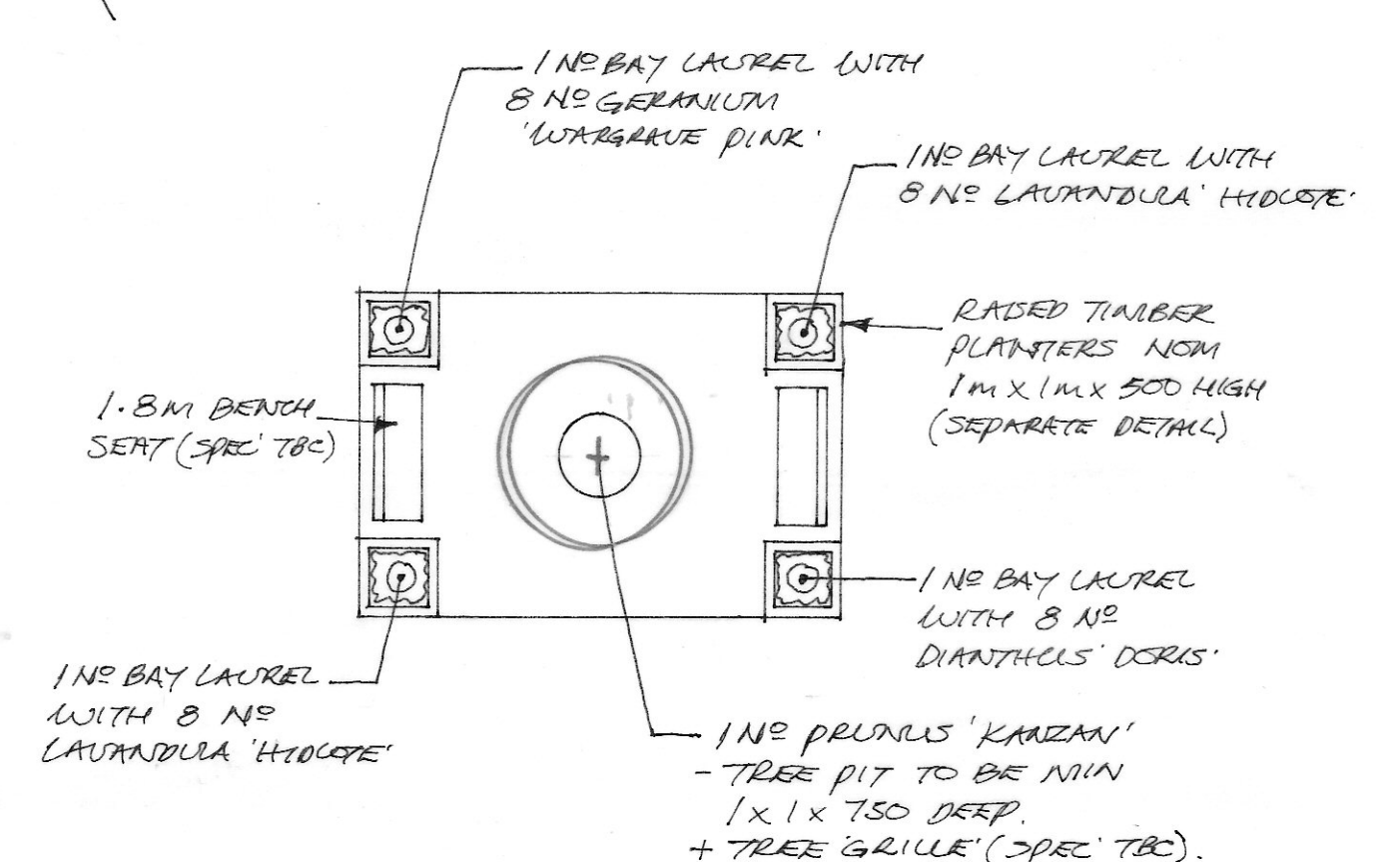
TREES

2	BETULA PERDULA	H. STD	0.G.
2	CARTAGUS X LAVALLEI		
2	NIALLUS SYLVESTRIS	12/14 CM	

0.G. = OPEN GROUND (BARE ROOT) - SUBJECT TO SEASON.
 ANY TREES / SHRUBS THAT DO NOT MEET WITH THE SPECIFICATION WILL BE RETIRED AT PRACTICAL COMPLETION (REPLACED WITHIN 14 DAYS).
 SUBSTITUTIONS (AVAILABILITY) MAY BE ACCEPTED IF AGREED MINIM 21 DAYS BEFORE WORKS ON SITE.
 * CONSULT THE S.O. IF IN DOUBT AS TO THE REQUIREMENTS OF THE SCHEDULE OR DRAWING.

HEDGE PLANTING:
 A-B 195 NO FAGUS SYLVASTICA
 - PLANTED IN 2 ROWS 400 APART
 - PLANTS AT 4500 STAGGERED.

ANY DAMAGE TO 'VERGE' DURING ENTRANCE AGGERATION TO BE MADE GOOD (GRASS SEED)



MEMORIAL GARDEN 1:100

* THIS DRAWING IS TO BE READ IN CONJUNCTION WITH DRG 1 OF 2 (EXISTING TREES)

REV B. JULY '25 planting adjusted to suit further changes to layout/planting. - Schedule updated accordingly.

REV A. JULY '25 layout amended and full details added including BNG requirements.

NATIVE MIX PLANTING

- AREA 1: 20 CORNYLIUS MONSIEURINA, 30 CORYLIUS AVELLANA, 20 VIBURNUM OPULIS, 25 ACER CAMPESTRE, 25 CORNYLIUS SANGUINER
- AREA 2: 30 CORNYLIUS MONSIEURINA, 20 CORYLIUS AVELLANA, 20 VIBURNUM OPULIS, 20 ACER CAMPESTRE, 20 CORNYLIUS SANGUINER, 15 LIGUSTRUM VULGARE
- AREA 3: 20 CORNYLIUS MONSIEURINA, 20 CORYLIUS AVELLANA, 15 VIBURNUM OPULIS, 20 ACER CAMPESTRE, 20 CORNYLIUS SANGUINER, 10 LIGUSTRUM VULGARE

PROPOSED CARE HOME
 BOOTHROYD LANE
 DEWSBURY

Landscape Proposals

1:200 APRIL '25 DRG No. 2^B OF 2 (A1)

MARTIN F. HOLLAND CML
 LANDSCAPE DESIGN CONSULTANT

- TO BE PLANTED ON A 300MM GRID. STAGGERED, RANDOM MIX IN MAX GROUPS OF 5 NO OF ANY ONE SPECIES.
- LIGUSTRUM TO BE EVENLY DISTRIBUTED IN 2/3.
- CORNYLIUS TO BE 1.5 M CLEAR OF ADJACENT PATHS