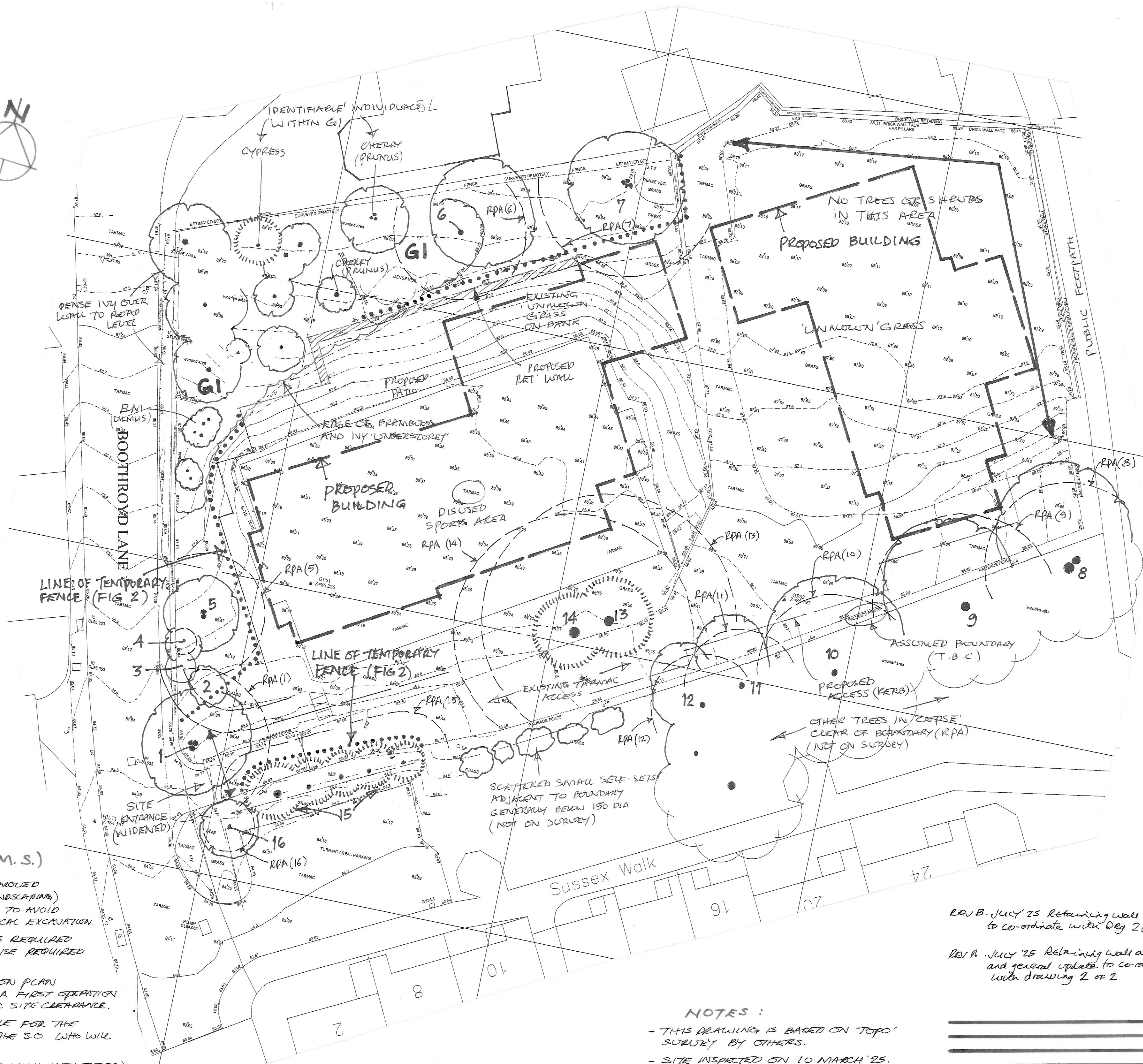
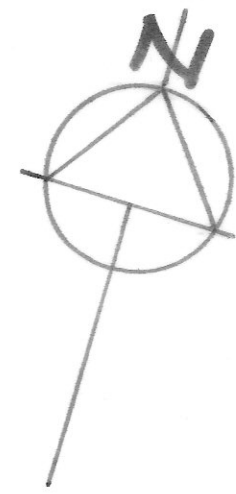


SCHEDULE OF TREES

REF	SPECIES	TRUNK DIA MM	HEIGHT M	CANOPY SPREAD N S E W	CAN ABOVE G.L.	RPA DIA	CAT	COMMENTS/PRELIMINARY RECS.	
1	ASH (FRAXINUS EXCELS)	100	14	5 4 4 4	4	6.6	C	MODERATE EXAMPLE, SELF-SET. BOUNDARY LOCATION.	
2	BLACKTHORN (PRUNUS SPINOSA)	25	2	- - - -	-	-	-	GROUP OF 'COUCHING' SMALL SELF-SETS. NOT SIGNIFICANT.	
3	ASH (FRAXINUS EXCELS)	-	-	- - - -	-	-	-	DEAD, NOT ON SURVEY.	
4	ASH (FRAXINUS EXCELS)	100	8	1.5 1.5 1.5 1.5	1	1.2	C	SMALL SELF-SET ON BOUNDARY NOT SIGNIFICANT.	
5	ASH (FRAXINUS EXCELS)	TWIN STEM (425)	8	3 3 3 3	3	5.1	C	MODERATE EXAMPLE, SELF-SET. BOUNDARY LOCATION.	
6	POPLAR (POPULUS SP)	150	18	7 3 6 3	3	5.4	C	MODERATE EXAMPLE VISIBLE 'LEAN' TO E. V. CLOSE TO ADJACENT HOUSE ROOF.	
7	ASH (FRAXINUS EXCELS)	MULTI STEM (650)	14	4 5 5 5	5	7.8	B	REASONABLE EXAMPLE. REMOVE LOWER EPICORMIC GROWTH TO IMPROVE SHAPE.	
8	SYCAMORE (ACER PSEUDO)	2 x 600 (2400)	16	8 0.5 0.5 5	4	7.1	-	OFF SITE TREE NEAR BOUNDARY - PLOTTED TO SHOW POTENTIAL RPA INTO SITE.	
9	SYCAMORE (ACER PSEUDO)	TWIN (650)	7	0.5 0.5 7	3	7.8	-	AS 8. ABOVE.	
10	CHERRY (PRUNUS AVIUM)	550	12	6 0.5 0.5 6	3	6.6	-	AS 8. ABOVE.	
11	CHERRY (PRUNUS AVIUM)	400	12	6 0.5 0.5 4	3	4.8	-	AS 8. ABOVE.	
12	SYCAMORE (ACER PSEUDO)	350	12	5 0.5 0.5 3	3	4.2	-	AS 8. ABOVE.	
13	CYPRESS (C. LAZANDII)	900	16	4 3 3 3	1.5	10.8	C	UBIQUITOUS GARDEN CONIFER MATURE SPECIMEN. EVIDENCE OF HISTORIC REDUCTION. AS 13. ABOVE	
14	CYPRESS (C. CASTLEWELLAN)	850	16	3 3 3 3	1.5	10.2	C	AS 13. ABOVE	
15	CYPRESS	400	8-10	- - - -	-	1.0	4.8	C	LINE OF UBIQUITOUS GARDEN CONIFERS FORMING BOUNDARY 'HEDGE'.
16	SYCAMORE (ACER PSEUDO)	175	8	3 3 3 3	2.5	2.1	-	SMALL OFF-SITE TREE NEAR ACCESS.	
G1	SMALL 'ORCHARD' MIXED SPECIES INC 5% BLACKTHORN, ASH, ELM.	400	8-16	- - - -	-	-	-	DENSE GROUP OF SELF-SETS IN CORNER OF SITE AT UPPER LEVEL. IVY INFESTATION IN SOME CANOPIES. BRAMBLES/IVY GROUND COVER. APPROX MARK TREE POSITIONS SHOWN.	



ARBORICULTURAL IMPLICATIONS (A.I.A.)

- T1 - TO BE REMOVED TO IMPROVE ACCESS ROAD.
- T2 - TO BE REMOVED TO IMPROVE ACCESS ROAD.
- T3 - DEAD. REMOVE.
- T4 - RETAINED. CLEAR OF PROPOSALS
- T5 - RETAINED. PROPOSED PAVING ENDS/ARCHES INTO RPA BY 5 M<sup>2</sup> (7%) UNLIKELY TO RESULT IN DAMAGE.
- T6 - RETAINED. PROPOSED RETAINING WALL AT LOWER LEVEL (1M) ENDS/ARCHES INTO RPA BY 9 M<sup>2</sup> (10%) UNLIKELY TO RESULT IN SIGNIFICANT DAMAGE.
- T7 - RETAINED (AT HIGHER LEVEL BY APPROX 1M) PROPOSED BUILDING ENDS/ARCHES INTO RPA BY 10 M<sup>2</sup> (6%) UNLIKELY TO RESULT IN SIGNIFICANT DAMAGE.
- T8 - OFF SITE. RETAINED. CLEAR OF RPA. CANOPY OVERHANGS WILL REQUIRE REDUCTION/RAISING.
- T9 - OFF SITE. RETAINED. BUILDING ON EDGE OF RPA. EXTERNAL PAVING ENDS/ARCHES BY 12 M<sup>2</sup> (7%) UNLIKELY TO RESULT IN DAMAGE. CANOPY OVERHANGS WILL REQUIRE REDUCTION/RAISING.
- T10 - OFF SITE. RETAINED. CANOPY OVERHANGS WILL REQUIRE REDUCTION/RAISING. EXISTING TARMAC OVER RPA REDUCED.
- T11 - OFF SITE. RETAINED. CANOPY OVERHANGS WILL REQUIRE REDUCTION.
- T12 - REDUCTION. EXISTING TARMAC OVER RPA REDUCED.
- T13/T14 - TO BE REMOVED TO FACILITATE PROPOSALS.
- T15 - CONIFER LINE - ASSUMED OFF SITE - T.B.C. RETAINED. ACCESS WIDENING IS TO N. OF RPA (CLEAR). WIDER REALIGNMENT OF KERB TO S. SIDE.
- G1 - MAJORITY RETAINED. AT HIGHER LEVEL - UP TO 2M ABOVE. GENERALLY CLEAR OF PROPOSALS. LOCAL AREA OF EXCAVATION ON S. EDGE OF GROUP TO ALLOW NEW RETAINING WALL. NO SIGNIFICANT IMPACT - NO SIGNIFICANT TREES IN THE SPECIFIC AREA.

METHOD STATEMENT (A.M.S.)

- WHERE EXISTING TARMAC IS TO BE REMOVED OVER RPA'S (AREAS RESTORED TO LANDSCAPING) WORKS TO BE CARRIED OUT BY HAND TO AVOID UNDOE DAMAGE TO ROOTS BY MECHANICAL EXCAVATION.
- NO SPECIFIC CONSTRUCTION TECHNIQUES REQUIRED RELATIVE TO TREES UNLESS OTHERWISE REQUIRED BY STRUCTURAL ENGINEER.
- TEMPORARY PROTECTION AS SHOWN ON PLAN (FENCING ETC) TO BE INSTALLED AS A FIRST OPERATION PRIOR TO START OF ANY WORKS. INC SITE CLEARANCE.
- THE SITE AGENT WILL BE RESPONSIBLE FOR THE INSTALLATION AND IS TO CONTACT THE S.O. WHO WILL INSPECT, APPROVE, AND RECORD.
- BEYOND FENCE LINES (CONSTRUCTION EXCLUSION ZONE)
  - NO FIRES - NO STORAGE OF ANY MATERIALS
  - NO ACCESS BY MACHINERY, NO ALTERATION OF LEVELS +/-
- FENCING TO REMAIN IN PLACE UNTIL SUBSTANTIAL COMPLETION OF CONSTRUCTION. AND REMOVAL IS REQUIRED TO CARRY OUT EXTERNAL WORKS/LANDSCAPING.
- TREE SURGERY**
  - EXCESS (UNMANAGED) OVERHANGS FROM T8 - T12 INC. TO BE CUT BACK BY NOM 4 M TO ALLOW CONSTRUCTION ACCESS AND CLEARANCE FROM NEW BUILDING/CAR PARK. CANOPIES RAISED TO 3M.
  - T7 CANOPY SPREAD TO S. REDUCED BY 2.5M.
  - NO OTHER SURGERY UNLESS OTHERWISE AGREED.
  - ALL WORKS CARRIED OUT BY APPROVED SURGEON.

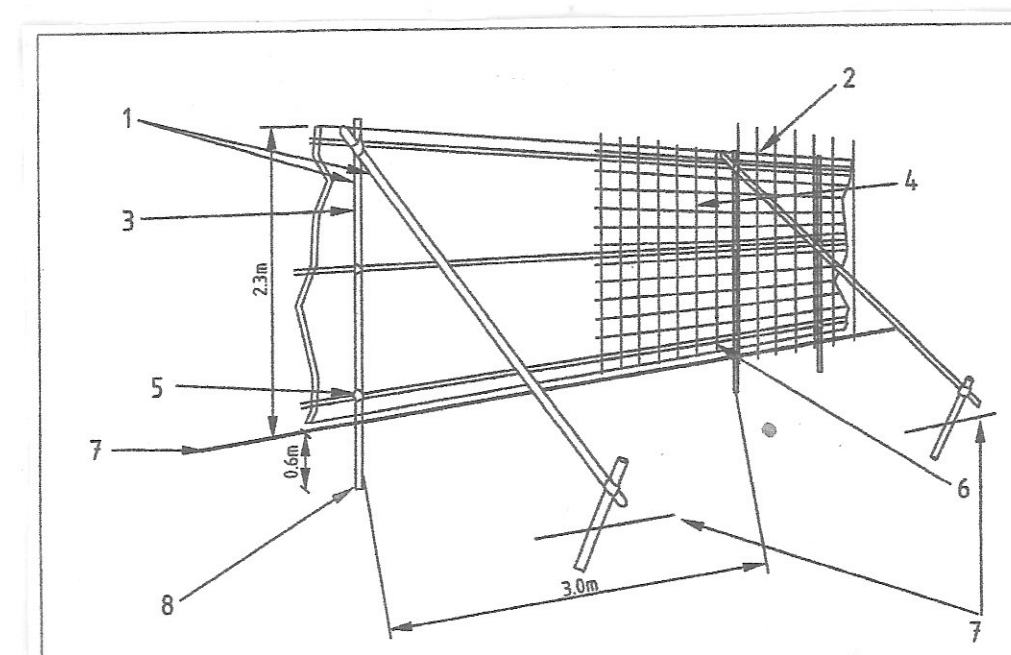


Figure 2 - Protective barrier B.S. 5837 (FIG 2)

NOTES:

- THIS DRAWING IS BASED ON 'TOP' SURVEY BY OTHERS.
- SITE INSPECTED ON 10 MARCH '25.
- CANOPY SHAPES/SIZES CHECKED TO SCALE BASED ON DIMENSIONS CHECKED ON SITE.
- RPA'S (ROOT PROTECTION AREAS) CALCULATED AS PER RECS OF B.S. 5837.
- \* THIS DRAWING IS TO BE READ IN CONNECTION WITH M.F.H. DRG 2 OF 2 (LANDSCAPE PROPOSALS)

REV B. July '25 Retaining wall adjusted to co-ordinate with Drg 2B.  
 REV A. July '25 Retaining wall amended and general update to co-ordinate with drawing 2 of 2

**PROPOSED CARE HOME  
 BOOTHROYD LANE  
 DEWSBURY**

ASSESSMENT OF  
 EXISTING TREES  
 INC TREE PROTECTION

1:200 APRIL '25 DRG No. 1B of 2  
 (A1)

**MARTIN F. HOLLAND CML**  
 LANDSCAPE DESIGN CONSULTANT

WOODSIDE HOUSE MUCKLOW HILL  
 HALESOWEN WEST MIDLANDS B62 8BT  
 TEL 0121 503 0507 EMAIL martinfh@aol.com