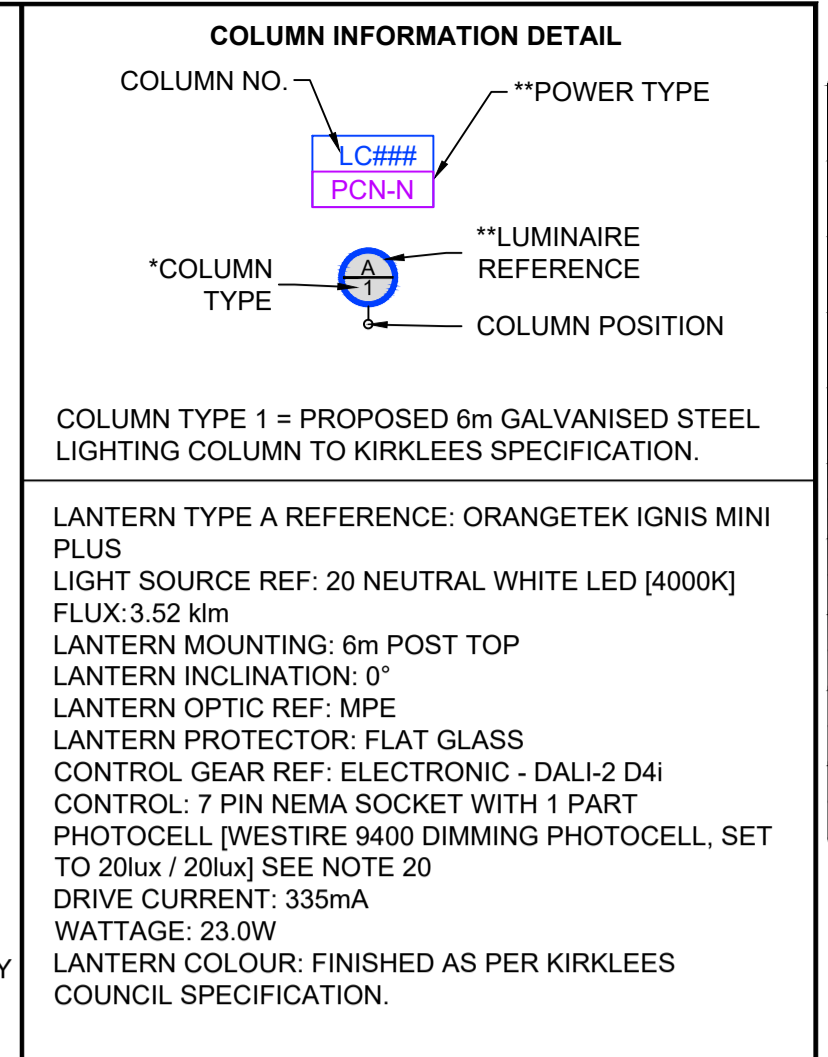


- NOTES**
- THIS IS AN AUTOCAD DRAWING AND SHOULD NOT BE AMENDED BY HAND.
 - THE EXISTING LOCATIONS ARE APPROXIMATE AND THEIR ACCURACY CANNOT BE GUARANTEED.
 - ALL DIMENSIONS IN METRES UNLESS OTHERWISE STATED.
 - THIS DRAWING MUST NOT BE SCALED.
 - DRAWINGS ARE TO BE PRINTED IN COLOUR.
 - DRAWING TO BE READ IN CONJUNCTION WITH OTHER DESIGN DOCUMENTS:
 - 4428-DFL-HLG-XX-CA-EO-13001 [LIGHTING CALCULATION]
 - 4428-DFL-ELG-XX-CA-EO-13001 [GN01 CALCULATION]
 - 4428-DFL-HLG-XX-RA-EO-13002 [RISK ASSESSMENT]
 - 4428-DFL-HLG-XX-RP-EO-13002 [DESIGN SUMMARY REPORT]
 - COLUMN LOCATIONS TO BE CHECKED AGAINST UTILITY DRAWINGS FOR CONFLICTS BY A COMPETENT ENGINEER.
 - CONTRACTOR SHOULD SATISFY THEMSELVES THAT ANY UTILITY DRAWINGS AFFECTING THE SCHEME ARE ACCURATE AND UP TO DATE PRIOR TO COMMENCEMENT.
 - IF COLUMNS CANNOT BE INSTALLED AS SET OUT IN THIS DRAWING, THEN THE DESIGNER WILL HAVE TO BE CONSULTED FOR NEW COLUMN POSITIONS.
 - COLUMN NUMBERING SHOWN IS FOR REFERENCE PURPOSES ONLY, FINAL NUMBERING SHOULD BE AGREED WITH KIRKLEES COUNTY COUNCIL PRIOR TO CONSTRUCTION.
 - ALL WORKS SHOULD BE CARRIED OUT BY SUITABLY QUALIFIED AND COMPETENT PERSONS IN ACCORDANCE WITH BUT NOT LIMITED TO, G39 'WORKING IN THE VICINITY OF DNO EQUIPMENT', 'WORKING AT HEIGHT REGULATIONS', 'ELECTRICITY AT WORK REGULATIONS', 'SAFE DIGGING PRACTICES HSG47 'AVOIDING DANGER FROM UNDERGROUND SERVICES' AND 'CODE OF PRACTICE FOR ELECTRICAL SAFETY AND HIGHWAY ELECTRICAL OPERATIONS'.
 - COLUMN ROOT PROTECTION SHOULD BE GLASS FLAKE ROOT.
 - COLUMNS SHALL BE INSTALLED WHEREVER PRACTICABLE SO THAT A MAINTENANCE OPERATIVE WORKING ON EQUIPMENT IN THE BASE COMPARTMENT OF THE COLUMN WILL FACE ONCOMING TRAFFIC.
 - COLUMNS ARE TO BE POSITIONED AT THE BACK OF THE FOOTWAY UNLESS SPECIFIED OTHERWISE ON THIS DRAWING. COLUMNS IN VERGES SHOULD BE NO CLOSER THAN 800MM FROM THE KERB EDGE TO THE FRONT FACE OF THE COLUMN.
 - IF STREET LIGHTING COLUMNS REQUIRE SIGNS TO BE ATTACHED, THIS SHOULD BE CONFIRMED WITH THE MANUFACTURER AT TIME OF ORDER TO ENSURE THAT THE COLUMN CAN TAKE THE ADDITIONAL WEIGHT AND WINDAGE IN ACCORDANCE WITH PD 6547:2004+A1:2009.
 - ALL LIGHTING INSTALLATIONS AND EQUIPMENT TO BE TO KIRKLEES COUNTY COUNCIL ADOPTABLE STANDARDS. REFERENCE SHOULD BE MADE TO KIRKLEES COUNTY COUNCIL SPECIFICATION.
 - ALL LIGHTING COLUMNS, LUMINARIES AND ASSOCIATED EQUIPMENT TO BE TO KIRKLEES COUNTY COUNCIL ADOPTABLE STANDARDS AND INSTALLED AS PER THEIR SUITE OF STANDARD DETAIL DRAWINGS.
 - ALL LIGHTING COLUMNS HAVE BEEN ASSUMED TO HAVE PRIVATE CABLE NETWORK (PCN) LOW VOLTAGE SUPPLIES BY OTHERS.
 - IF STREET LIGHTING COLUMNS REQUIRE SIGNS TO BE ATTACHED, THIS SHOULD BE CONFIRMED WITH THE MANUFACTURER AT TIME OF ORDER TO ENSURE THAT THE COLUMN CAN TAKE THE ADDITIONAL WEIGHT AND WINDAGE IN ACCORDANCE WITH PD 6547:2023, BS EN 40-3-1 AND BS EN 40-3-3.
 - PHOTOCELL TO BE PRE PROGRAMMED TO THE FOLLOWING:
 - 100% - DUSK TO 22:00
 - 75% - 22:00 TO 00:00
 - 50% - 00:00 TO 05:00
 - 100% - 05:00 TO DAWN



KEY:

SYMBOL	DESCRIPTION
	PROPOSED COLUMN COMPLETE WITH LANTERN [SEE COLUMN / LANTERN INFORMATION DETAIL FOR FURTHER INFORMATION].
PCN-N	NEW PCN SUPPLY
	REAR SHIELD MAYBE REQUIRED.

DFL
 LIGHTING DESIGN-ELECTRICAL-SMART CITIES-ENERGY REDUCTION-LIGHTING IMPACT

DFL-UK (Designs for Lighting Ltd)
 17/18 City Business Centre
 Winchester, Hampshire, SO23 7TA
 Tel: 01962 855080
 Email: info@df-uk.com

MARWOOD LIGHTING SOLUTIONS.

PROJECT
 LAND OFF FIELDHEAD LANE, BIRSTALL

DRAWING TITLE
 PRIVATE LIGHTING LAYOUT

DESIGNED: CG	CAD: CG	CHECKED: AE	APPROVED: AE
ISSUE DATE: APR 2026	SHEET: 1 of 1	SCALE: 1:500	SHEET SIZE: A1
DRAWING NUMBER: 4428-DFL-HLG-XX-DR-EO-13002			
JOB NUMBER: 4428	STATUS: S3	REVISION: P01	

SAFETY, HEALTH AND ENVIRONMENTAL INFORMATION

IN ADDITION TO THE HAZARDS/RISKS NORMALLY ASSOCIATED WITH THE TYPES OF WORK DETAILED ON THIS DRAWING, NOTE THE FOLLOWING SIGNIFICANT RESIDUAL RISKS (REFERENCE SHALL ALSO BE MADE TO THE DESIGN RISK ASSESSMENT 4428-DFL-HLG-XX-RA-EO-13002)

CONSTRUCTION:

- HAZ 08 = UNDERGROUND LOW GAS MAINS IN THE VICINITY OF THE PROPOSED ASSET.
- HAZ 23 = RISK OF VEHICLES STRIKING PROPOSED ASSET.

HAZ-08

MAINTENANCE/CLEANING:

AS PER CONSTRUCTION.

USE:

AS PER CONSTRUCTION.

DECOMMISSIONING/DEMOLITION:

AS PER CONSTRUCTION.

THE CONTRACTOR IS TO SATISFY HIMSELF OF ALL UNDERGROUND NETWORKS PRIOR TO ANY DIGGING. THE CONTRACTOR IS TO MAINTAIN CABLE NETWORKS OF ALL EQUIPMENT THAT IS NOT PART OF THE WORKS BUT MAY BE FED FROM EQUIPMENT ASSOCIATED WITH THE WORKS.

NOT FOR CONSTRUCTION

PRELIMINARY DESIGN
 LOCATIONS TO BE CHECKED AGAINST STATS PRIOR TO INSTALLATION.

S3	P01	FOR REVIEW AND COMMENTS	24.04.2026	CG	AE	AE
STATUS	REV	AMENDMENT DESCRIPTION	DATE	CAD	CHKD	APPD

DFL CAD FILE: C:\Users\Ave\OneDrive\Lighting\DFL - Documents\Design\Projects\4428 Land off Fieldhead Lane\02 Drawings\4428-DFL-HLG-XX-DR-EO-13002.dwg