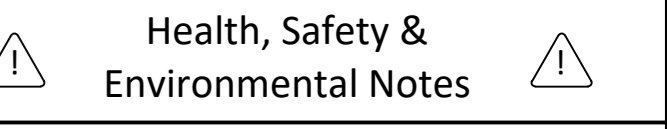


Do Not Scale

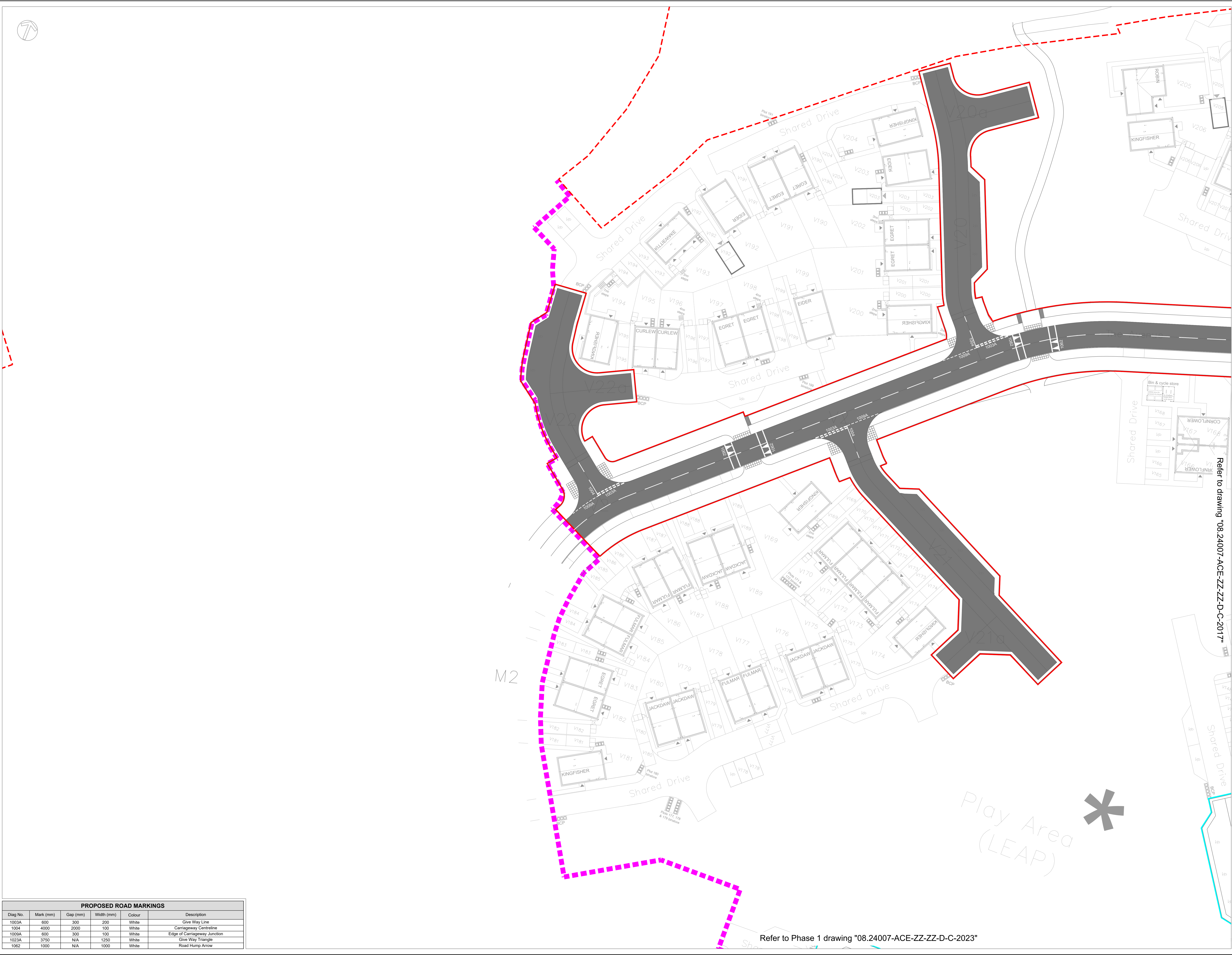
Drawing Notes

Drawing & schedule based on the following information:
Architect's: XREF_AWSM - Countryside
drawing/model: Collection Layout 09.10.2025

Residual Hazards



KEY
- - - Site Boundary
- - - S38 Highway Boundary - Phase 2
- - - S38 Highway Boundary - Phase 1
- - - Parcel Boundary



Refer to drawing "08.24007-ACE-ZZ-ZZ-D-C-2017"

Refer to Phase 1 drawing "08.24007-ACE-ZZ-ZZ-D-C-2023"

PROPOSED ROAD MARKINGS					
Diag No.	Mark (mm)	Gap (mm)	Width (mm)	Colour	Description
1003A	600	300	200	White	Give Way Line
1004	4000	2000	100	White	Carriageway Centreline
1009A	600	300	100	White	Edge of Carriageway Junction
1023A	3750	N/A	1250	White	Give Way Triangle
1062	1000	N/A	1000	White	Road Hump Arrow

Date	Description	By	Chk	Rev
24.10.25	Roads V20, 21 and 22 updated	WD	AT	P3
26.09.25	Updated to latest highway layout	CS	AT	P2
26.02.25	Initial Issue	AMG	AT	P1

ADEPT
CIVIL AND STRUCTURAL CONSULTING ENGINEERS
Web: www.adeptco.com
Email: info@adeptco.com
Tel: 01332 319 4538
Office Address: 2912 Mill, Sunny Bank Mills, Farnley, Leeds LS28 5JJ

Project: Blackmoorfoot, Huddersfield

Title: S38 Road Marking Layout - Phase 2 Sheet 1 of 3

Client: Countryside Partnerships

Scale	Initial author	Initial checker	Approver	Initial Date
1:250	AMG	AT	BP	JAN 25
Status	52	Purpose	Preliminary	Project Number
				08.24007
Project Originator Functional Specification Spatial Breakdown Form Discipline Number				Rev.
08.24007-ACE-ZZ-ZZ-D-C-2016				P3