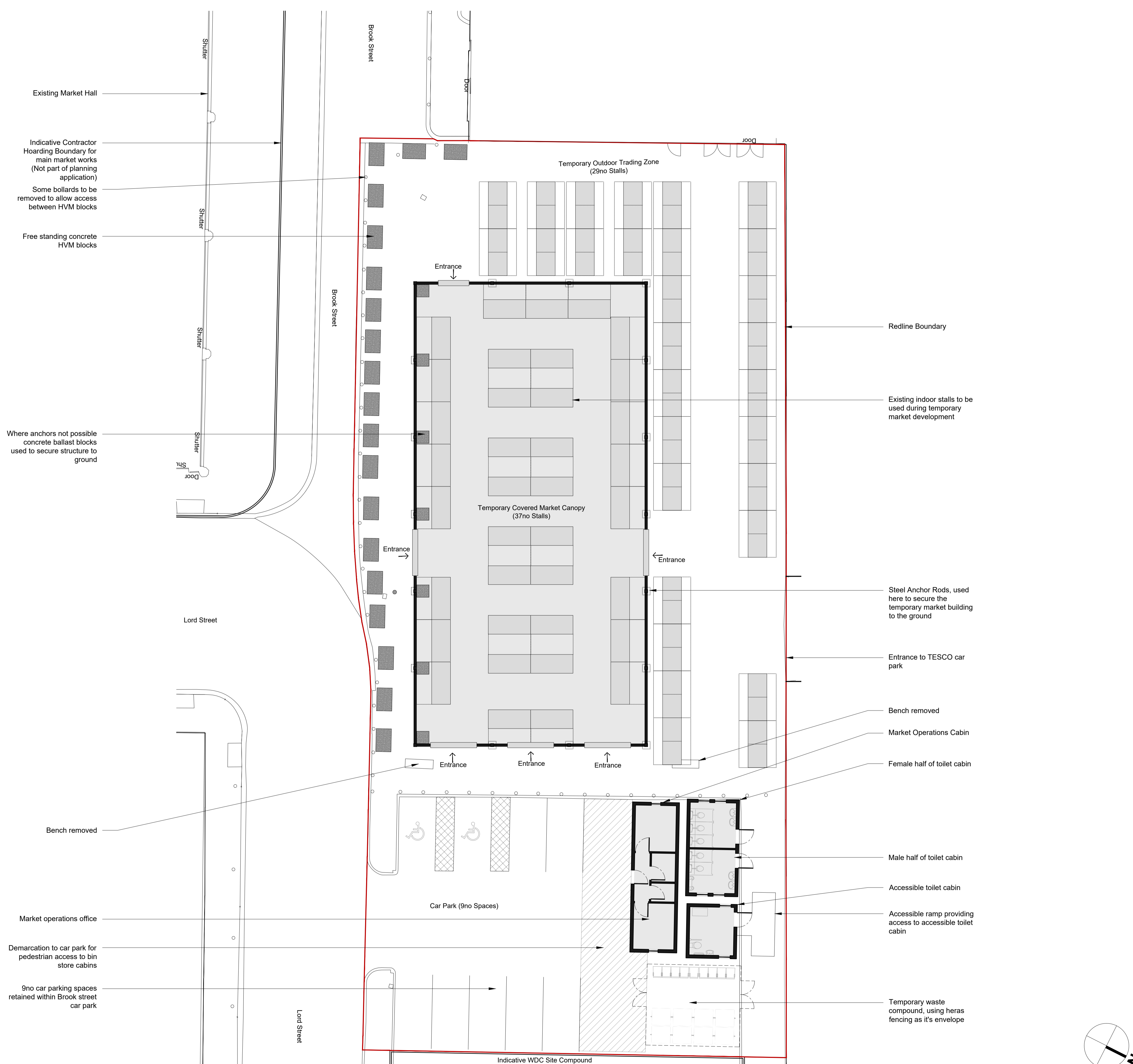


Do not remove this panel from this drawing. Do not scale from this drawing. All dimensions and levels are to be checked on site. All discrepancies, errors and omissions must be reported immediately to Greig and Stephenson Ltd. The contractor is responsible for setting out, checking and confirming all site conditions prior to fabrication and construction. All building and fabrication works are to be carried out in accordance with the Local and National Building Codes, practices and standards.

This drawing is copyright and must not be reproduced without the written consent of Greig and Stephenson Ltd. Greig and Stephenson Ltd. accept no responsibility for any loss or expenses arising from use of this drawing for any purpose other than those agreed in writing by Greig and Stephenson Ltd. This drawing is not to be used by any third party without the written consent of Greig and Stephenson Ltd.



P02 Revision Note:  
Layouts updated following client approval

REVISIONS	DATE	COMMENT	FP	NM	DRW	CHK
P02	17/11/25	Issued for Review and Comments		FP		NM
P01	12/11/25	Issued for Review and Comments		FP		NM

**Greig & Stephenson Architects**  
 Studio SW.201, Screenworks  
 22 Highbury Grove  
 London, N5 2ER  
 tel. 020 7403 5511  
 fax. 020 7403 5544  
 email. info@gands.co.uk

CLIENT  
**KIRKLEES COUNCIL**

PROJECT  
**Huddersfield Open Market**

STATUS  
**S3 - FOR REVIEW AND COMMENTS**

DRAWING  
**TEMPORARY MARKET BUILDING GENERAL ARRANGEMENT**

SCALE	DRAWN	CHECKED	DATE
1:125 @ A1	FP	NM	17/11/2025

DRAWING NUMBER	REVISION
HMH-GSA-TM-00-D-A-1170	P02

**01 Temporary Market Building: General Arrangement Plan**  
 1:125 @ A1

