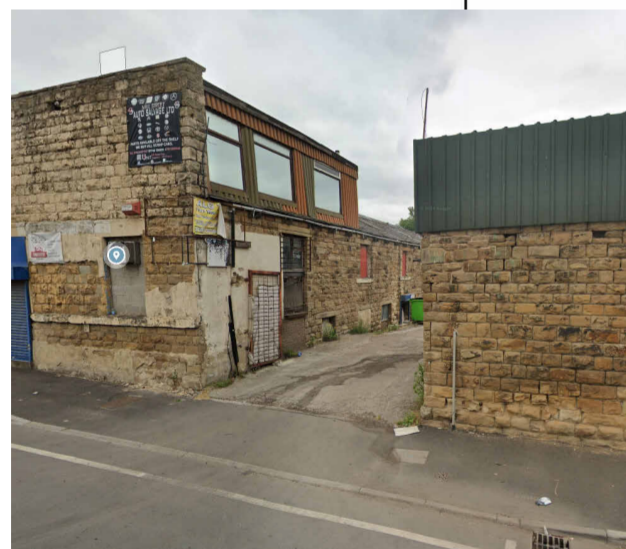
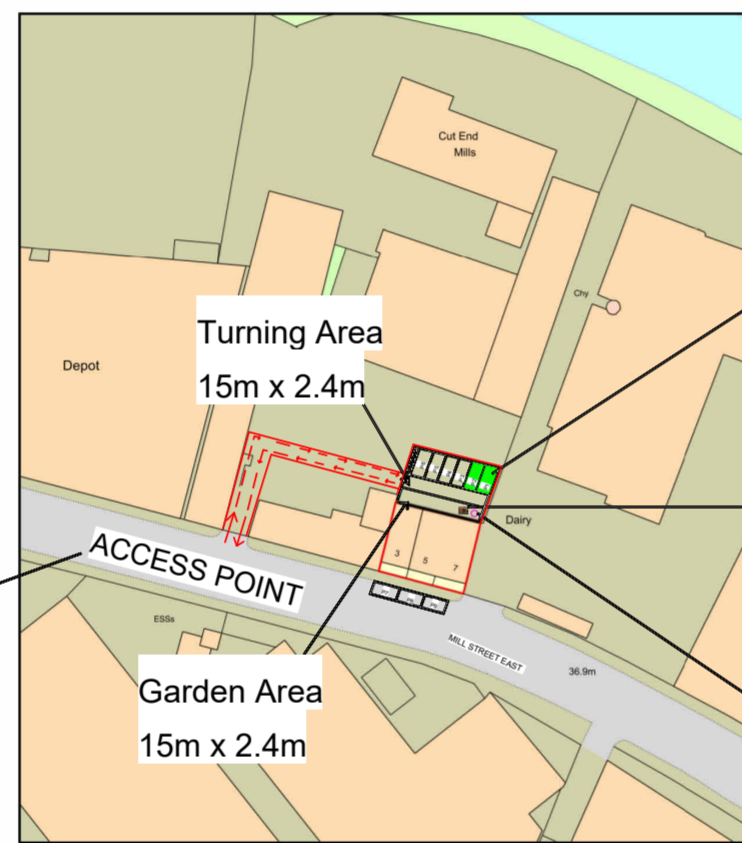




Site Location



Access Point
(Entrance + Exit Point)



Plan Produced for: 3-5-7 Mill St East, Dewsbury
 Date Produced: 29 Aug 2025
 Plan Reference Number: TQRQM25241123125220
 Scale: 1:1250 @ A4

© Crown copyright and database rights 2025 OS 100042766



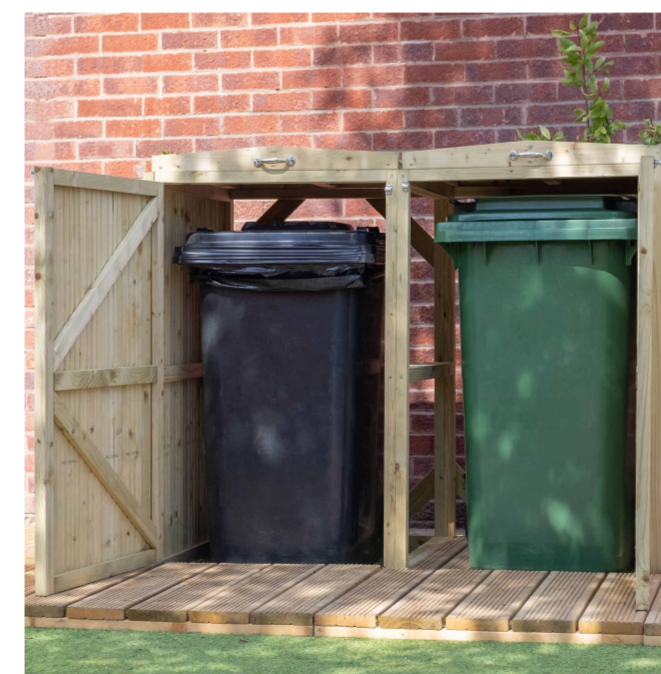
1 Site Location
1 : 1250



2x Electrical Charging Points (Highlighted Green)
- Each parking bay 5mx2.4m



Covered Bike Rack



Bin Stores
(Highlighted Purple)

Notes:

Sample Notes

REV	DESCRIPTION	BY	DATE
STATUS:	Project Status		



CLIENT:
Robert Bamling

ARCHITECT:
Manzil Studio Ltd

SITE:
3-5-7 Mill St East

TITLE:
Site Plan 1:1250

SCALE AT A2:	DATE:	DRAWN:	CHECKED:
1 : 1250	01/09/25	Ebrahim	Ebrahim
PROJECT NO:	DRAWING NO:	REVISION:	
A100	A100		