

The Bothy
<https://joivershuts.co.uk/>
 22 ft long and 9 ft wide, the Bothy blends the
 inspiration of a traditional bothy with
 contemporary Scandinavian design.

Composting wc
 Solar power
 Grey water recycle



HOLME VALLEY HONEY LTD

Collaborating with Holme Valley Honey offering space to house up to 30 hives which will be managed by themselves.
 Honey and other skincare products and candles produced are to be sold locally.
 Future potential of bee keeping workshops and tuition in 'The Classroom'

HEDGEROW

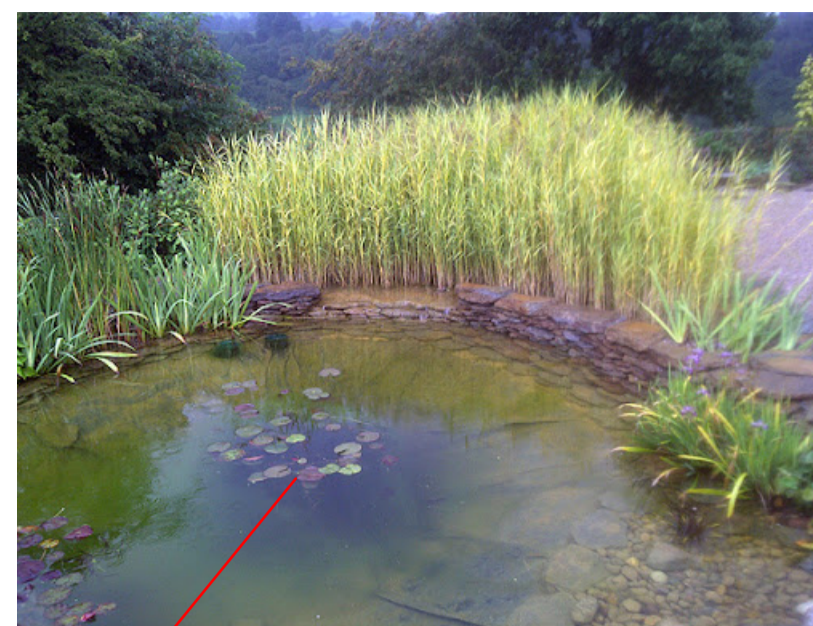
Traditional British Hedge Mix along the boundary.

This will be planted in the form of bare root whips.

These are all hardy and adaptable species attracting a variety of birds and wildlife from the seasonal blossom and berry offering.

In time this can be used in workshops to teach 'traditional layering methods' led in 'The Classroom'

- 76% Hawthorn
- 14% Field Maple
- 2% Dogrose
- 2% Dogwood
- 2% Wild Privet
- 2% Holly
- 2% Wild Cherry



REED BED AREA

- HEDGEROW AND SHRUBBERY
- M2 WILD FLOWER MEADOW
- PERMEABLE PAVING AND DRIVE
- NATIVE TREE MIX
- EXISTING GRASS

MEADOW 1 AND 2

(Prepared and ready to seed in March)
 M2 wildflower meadow

Using a product called Meadow Sow seed area for an annual meadow.

Seed mix is perennial and contains a 100% flower mix. Species mix is native, containing species of key importance for pollinators particularly bees, butterflies and moths plus wild bird feed.

Wild flower meadow to be used as cut flower material for seasonal floristry workshops/direct to florists and supply local businesses with floral displays. To be led in 'The Classroom'

Maintenance requirements are very low. Two cuts per year.

I have used similar products before within my landscaping business.

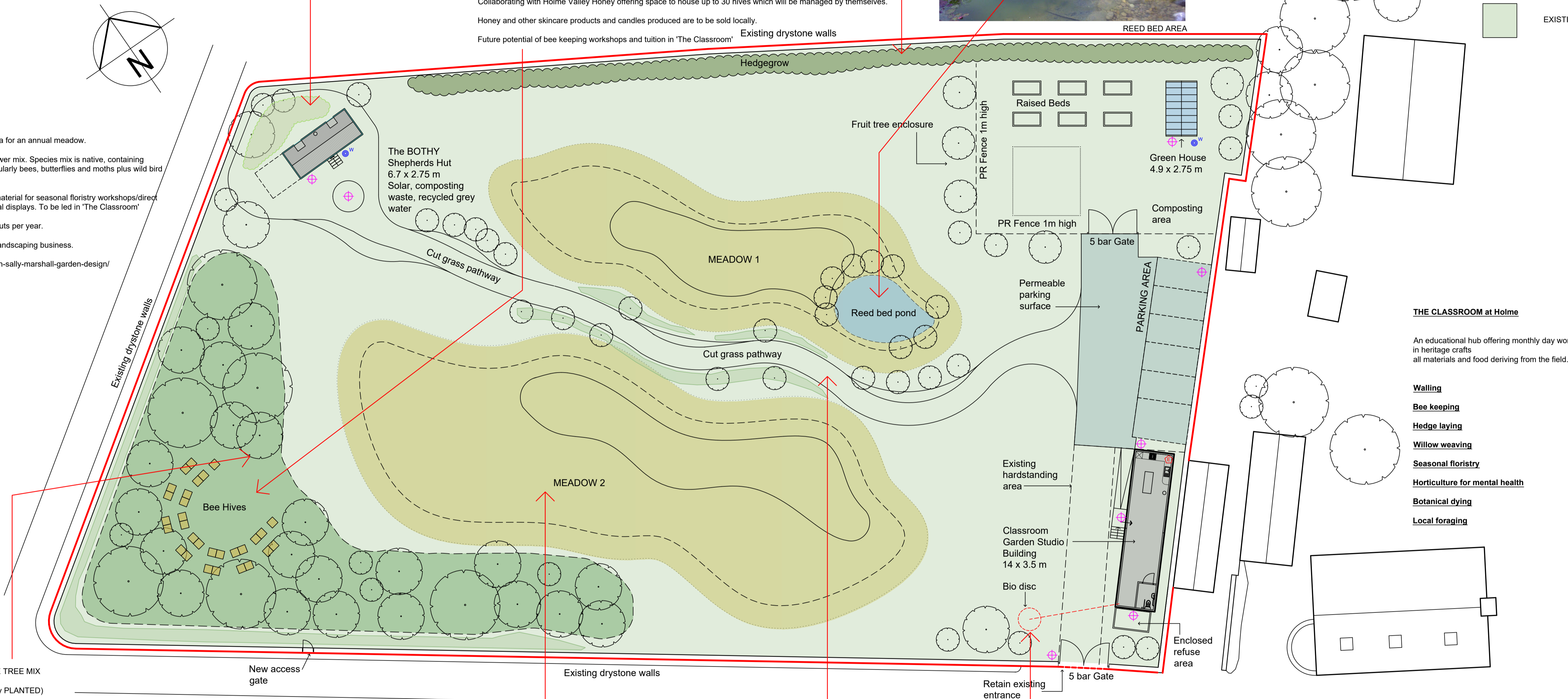
<https://wildflowerturf.co.uk/2019/11/22/a-qa-with-sally-marshall-garden-design/>

- Birdsfoot Trefoil
- Black Medic
- Bladder Campion
- Common Knapweed
- Common Sorrel
- Kidney Vetch
- Ladies Bedstraw
- Wild Marjoram
- Oxeye Daisy
- Perennial Flax
- Ribwort Plantain
- Red Campion
- Sainfoin
- Self Heal
- St Johns Wort
- Vipers Bugloss
- White Campion
- Wild Carrot
- Yarrow
- Yellow Rattle

THE CLASSROOM at Holme

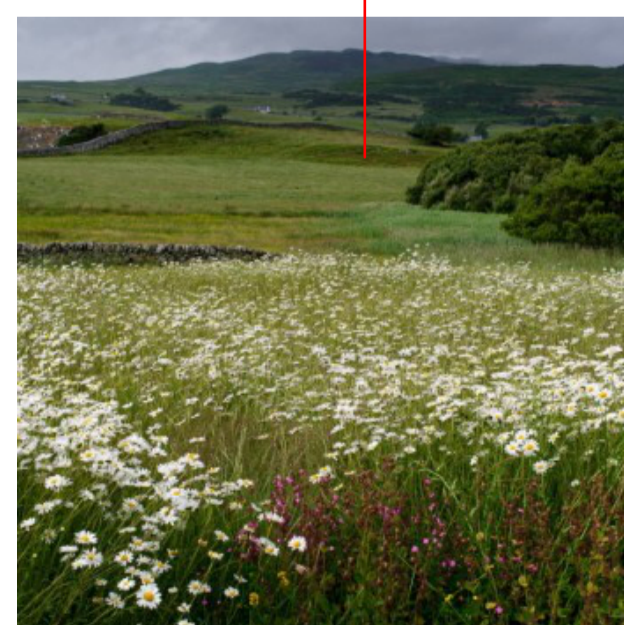
An educational hub offering monthly day workshops in heritage crafts all materials and food deriving from the field.

- Walling**
- Bee keeping**
- Hedge laying**
- Willow weaving**
- Seasonal floristry**
- Horticulture for mental health**
- Botanical dying**
- Local foraging**

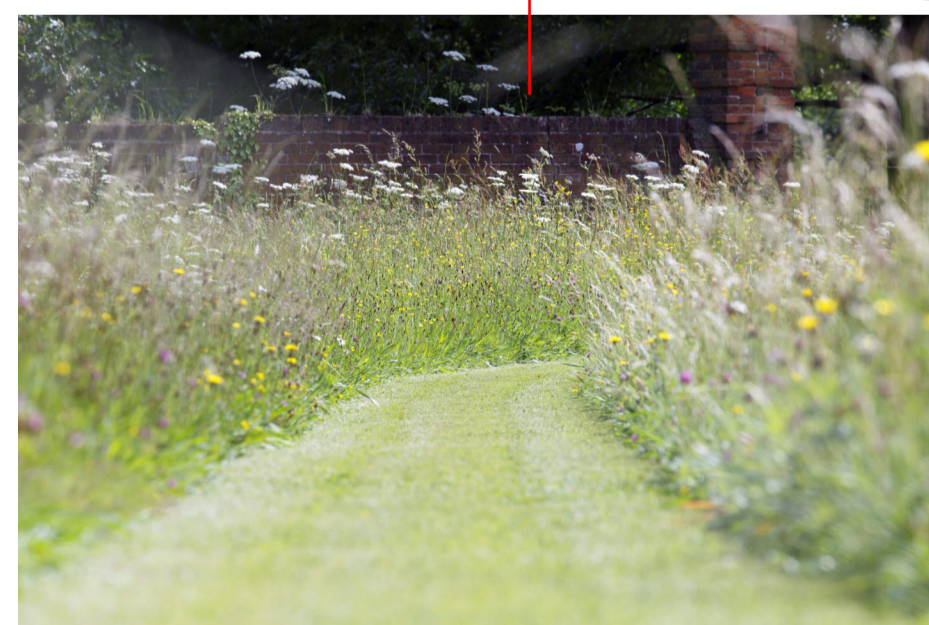


NATIVE TREE MIX
 (Already PLANTED)

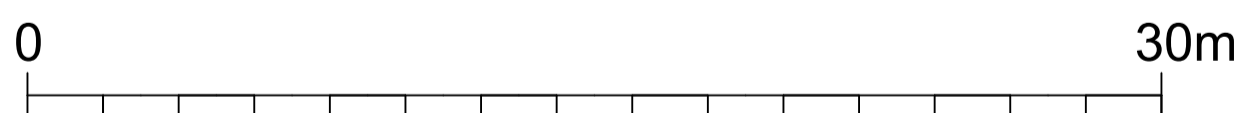
- 10 x Scott's pine
- 4 x Silver Birch
- 2 x Bird Cherry
- 2 x Blackthorn
- 2 x Field Mapl
- 2 x Hazel
- 2 x Rowan
- 2 x Wild Cherry
- 2 x Victoria Plum
- 2 x D'estivale Embassy apple
- 2 x Norfolk apple



WILD FLOWER MEADOWS



CUT GRASS PATH



GRASSCRETE TO PARKING AND DRIVE AREAS

PROPOSED CONCEPT AND OVERVIEW

THE BOTHY at Holme



architecture • interior design • illustration

REVISIONS

MM/DD/YY	REMARKS
1 191025	PLANNING APPLICATION
2	
3	
4	
5	