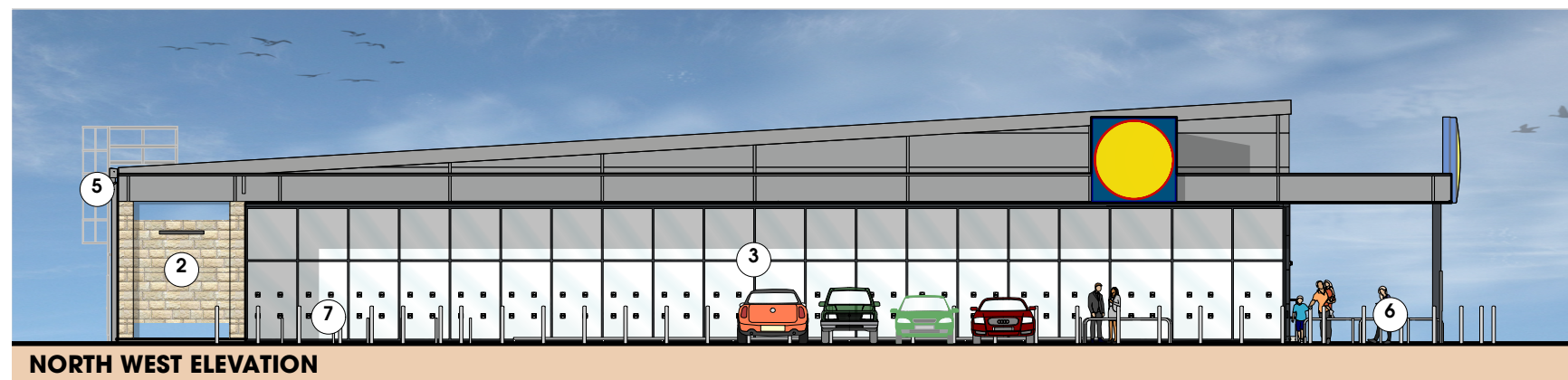
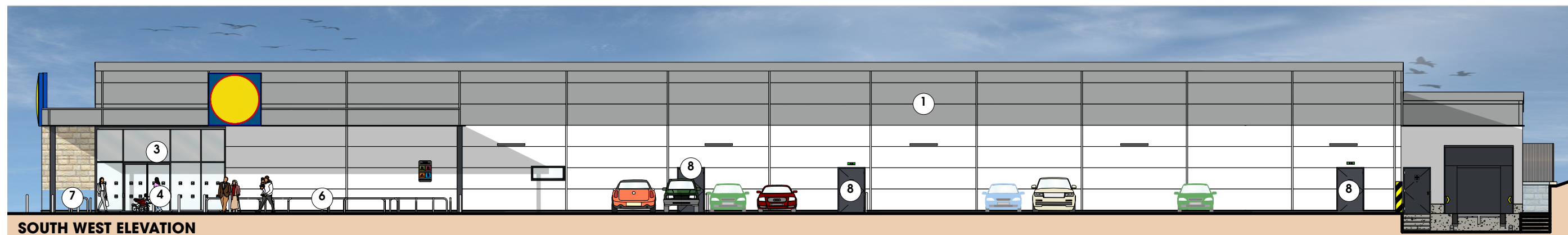


**MATERIALS KEY**

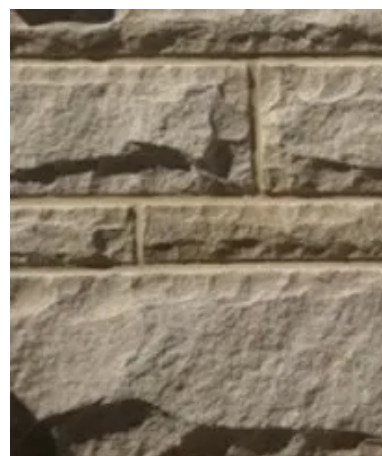
- ① INSULATED METAL CLADDING PANELS - COLOUR: WHITE & GREY
- ② BUFF FACING NATURAL SOURCED STONE. FINISHED WITH CLEAN CUT ASHLAR BANDING.
- ③ CURTAIN WALLING AND ENTRANCE DOORS - COLOUR: GREY
- ④ STEEL COPING FLASHING TO ROOF PERIMETER - COLOUR: GREY
- ⑤ ALUMINIUM GUTTERS AND RAIN WATER PIPES - COLOUR: GREY
- ⑥ STAINLESS STEEL TUBULAR TROLLEY GUIDES
- ⑦ STAINLESS STEEL CYCLE STANDS, 750mm HIGH.
- ⑧ POWDER COATED STEEL DOOR



**NORTH WEST ELEVATION**



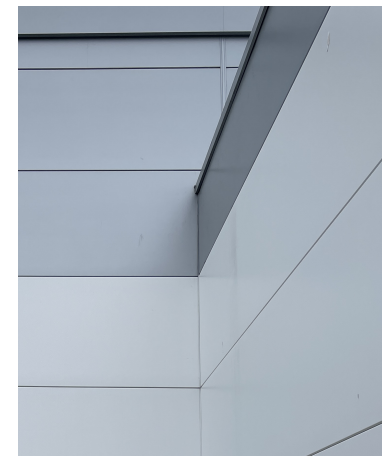
**SOUTH WEST ELEVATION**



**BUFF FACED NATURAL STONE**  
(TEXTURES ARE NOT TO SCALE)



**CURTAIN WALLING**  
(TEXTURES ARE NOT TO SCALE)



**WHITE & GREY CLADDING PANELS**  
(TEXTURES ARE NOT TO SCALE)



**POWDER COATED STEEL DOORS**  
(TEXTURES ARE NOT TO SCALE)

Rev	Date	Description	Drawn

**htcarchitects**  
York Place Studio  
8 Britannia Street  
Leeds  
LS1 2JZ  
T: (0113) 244 3457  
W: www.htcarchitects.co.uk  
E: info@htcarchitects.co.uk

client  
Lidl GB Ltd.



project  
Blackmoorfoot Road  
Huddersfield  
drawing title  
Proposed Elevations - DOC  
21

date September 2025  
status Planning  
scale 1:500 @ A3  
drawn BMS checked -  
job no. 2783 dwg no. P211 rev.