

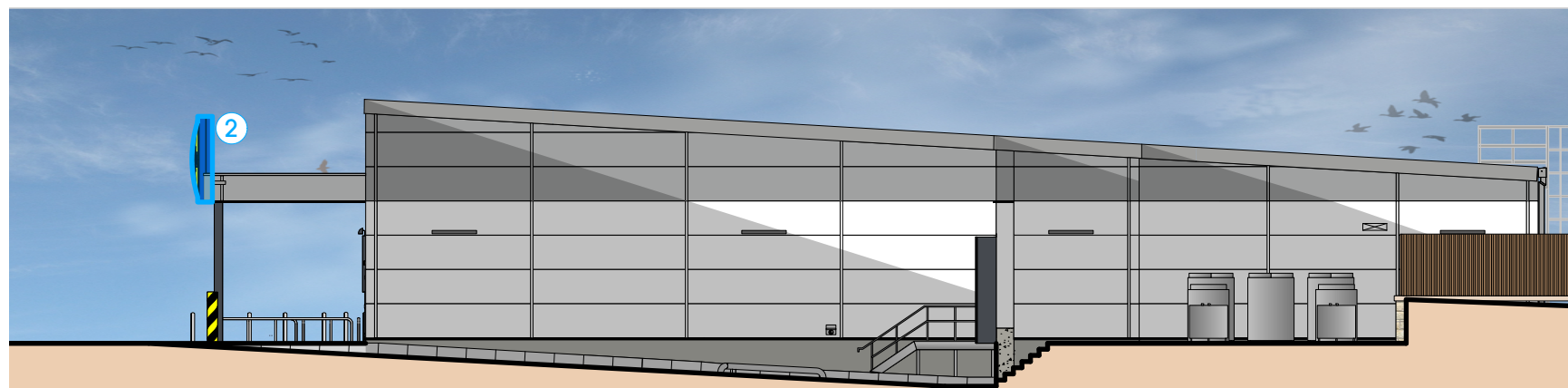
SOUTH WEST ELEVATION



SOUTH EAST ELEVATION



NORTH WEST ELEVATION



NORTH EAST ELEVATION

LIDL SIGNAGE KEY

- ① INTERNALLY ILLUMINATED LIDL FLAG POLE
- ② INTERNALLY ILLUMINATED CANOPY MOUNTED LOGO SIGN
- ③ EXTERNALLY ILLUMINATED LARGE WALL MOUNTED BILLBOARD
- ④ EXTERNALLY ILLUMINATED SMALL WALL MOUNTED BILLBOARD
- ⑤ INTERNALLY ILLUMINATED POSTER DISPLAY UNIT
- ⑥ NON-ILLUMINATED DIRECTIONAL SIGNAGE

THIS DRAWING IS COPYRIGHT, AND REMAINS THE PROPERTY OF HTG ARCHITECTS. IT MUST NOT BE REPRODUCED, USED, DISCLOSED OR TRANSMITTED TO THIRD PARTIES IN ANY FORM, IN WHOLE OR IN PART, WITHOUT PRIOR WRITTEN PERMISSION.

DO NOT SCALE!
ALL DIMENSIONS SHOULD BE CHECKED ON SITE BEFORE WORK COMMENCES

Rev.	Date	Description	Drawn

htcarchitects
York Place Studio
8 Britannia Street
Leeds
LS1 2DZ
T: (0113) 244 3457
W: www.htcarchitects.co.uk
E: info@htcarchitects.co.uk

client
Lidl GB Ltd.



project
Blackmoorfoot Road
Huddersfield
drawing title
Proposed Signage Elevations

date March 2025
status Planning
scale 1:200 @ A3
drawn DK checked BM
job no. 2783 dwg no. P501 rev.