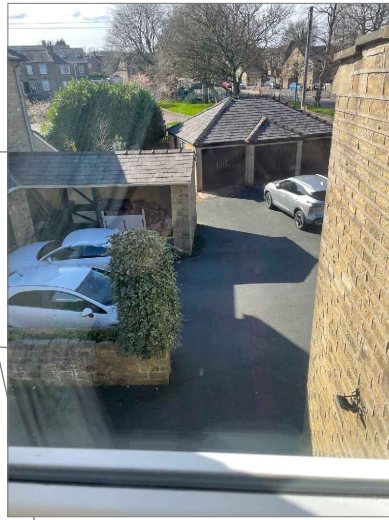


Photos showing existing use of parking/shared area at different times
 The parking and turning facilities will not materially change changing garage to a small dwelling
 No26 will have its own parking from the proposed new entrance as dwg ES04B



shared access owned by 26 /
 provides access for vehicles at
 24 and new dwelling with
 ample space for parking and
 turning for 4/5 vehicles

vehicular access

gravel

dedicated parking for 2 new dwelling

tarmac

gravel

fence / gate

amenity / garden / paving

26

parking for 2 no 24

24

Status:

Planning

Date:

Apr 2025

Scale:

1:100

Drg No:

ES07.#

#

Title: Parking and Turning Provision for 24 / New Dwelling

Project: Demolition of Garage and Proposed New Dwelling

26 East Street, Lindley, HD3 3NE