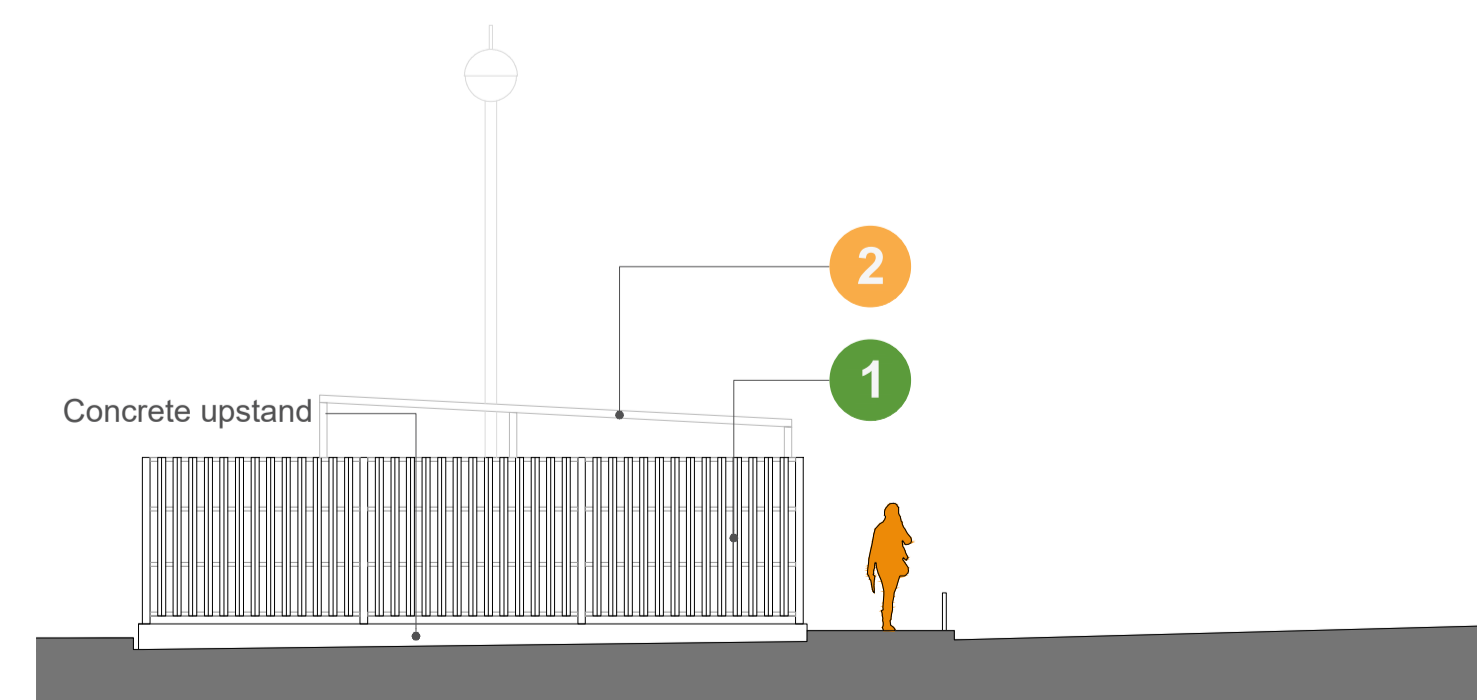
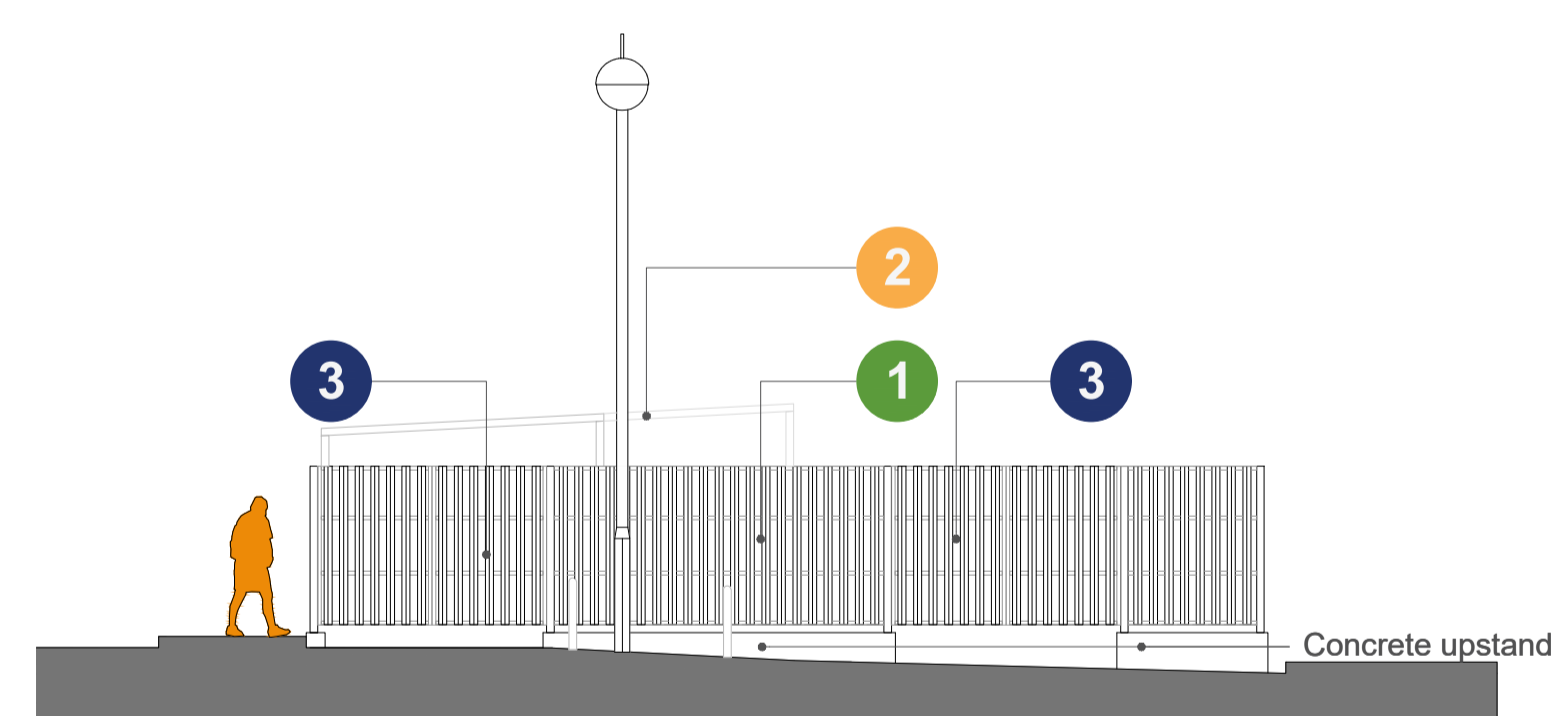
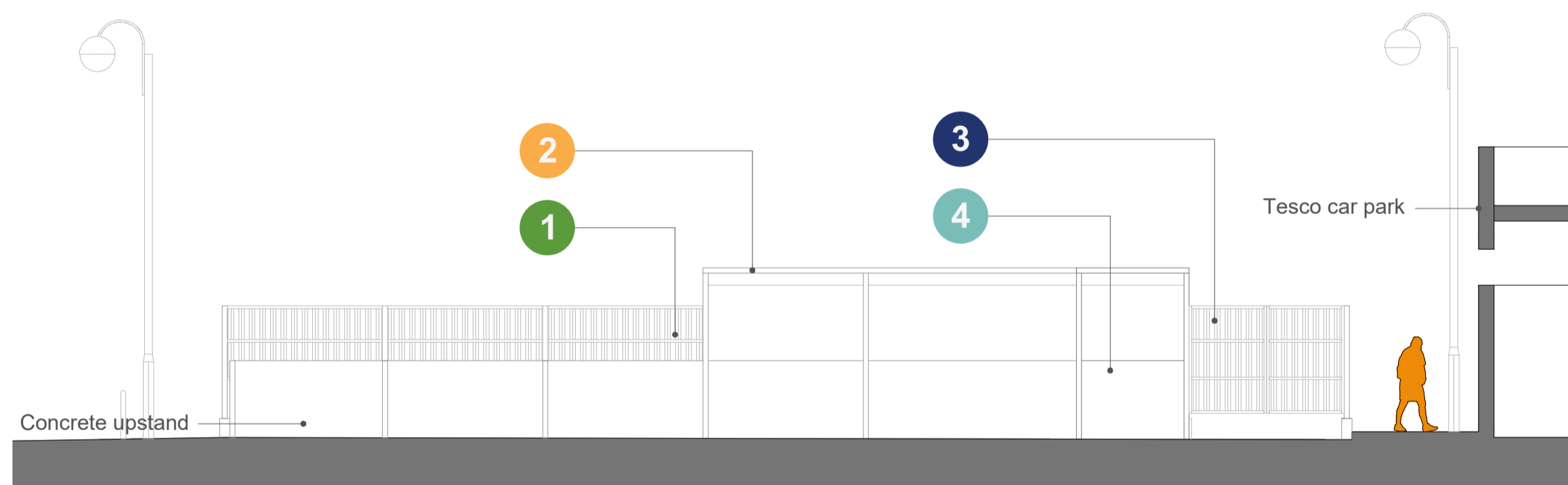
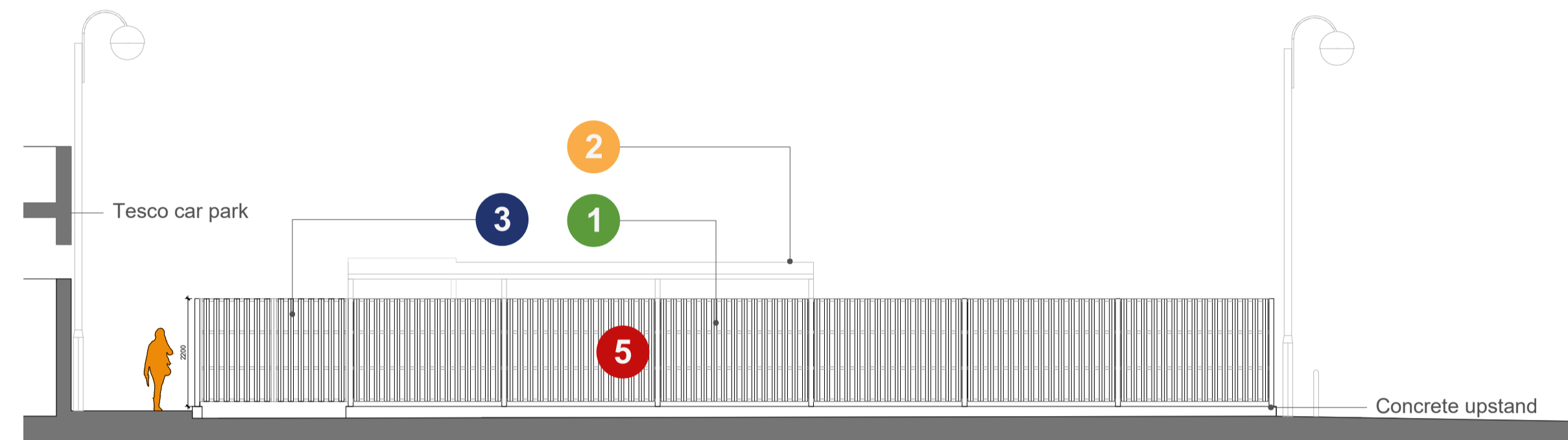
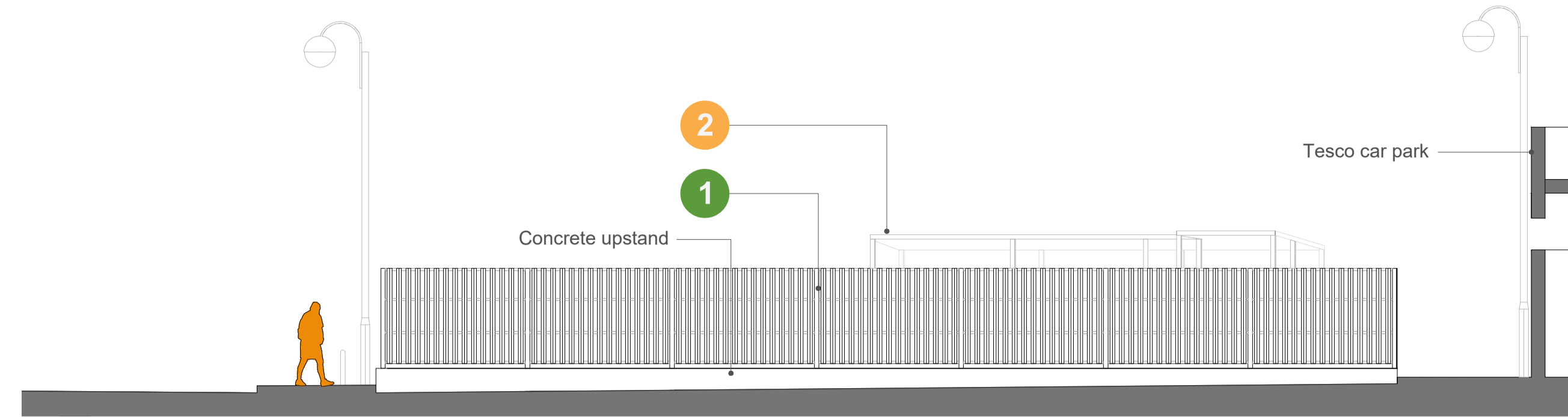
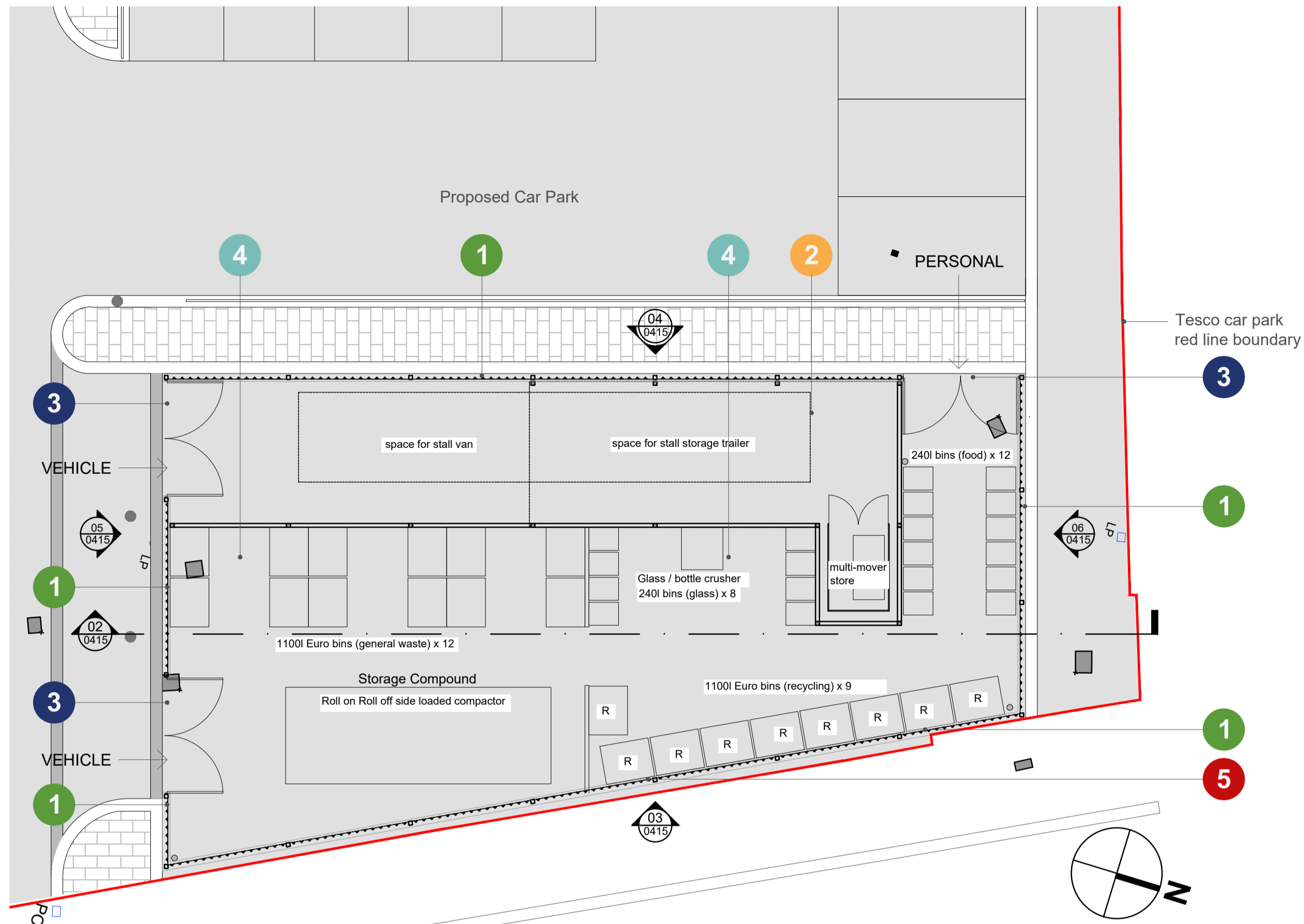


Do not remove this panel from this drawing. Do not scale from this drawing. All dimensions and levels are to be checked on site. All discrepancies, errors and omissions must be reported immediately to Greig and Stephenson Ltd. The contractor is responsible for setting out, checking and confirming all site conditions prior to fabrication and construction. All building and fabrication works are to be carried out in accordance with the Local and National Building Codes, practices and standards. This drawing is copyright and must not be reproduced without the written consent of Greig and Stephenson Ltd. Greig and Stephenson Ltd. accept no responsibility for any loss or expenses arising from use of this drawing for any purpose other than those agreed in writing by Greig and Stephenson Ltd. This drawing is not to be used by any third party without the written consent of Greig and Stephenson Ltd.



PROPOSED NEW FEATURES

- 1 New galvanized steel structure with timber infill to exterior of storage compound - min height 2.4m above FFL
- 2 New galvased steel frame trailer shelter with lightweight and low maintenance extensive green roof (Sedum, moss, grasses, herbs etc).
- 3 Double swing gates for vehicle and/or personnel access
- 4 1.5m high concrete post divider fence with gravel board and concrete infill panels
- 5 Signage zone

REV	DATE	COMMENT	DRW   APRV
P02	10/11/25	Issued for Planning - revised storage compound	TS NM
P01	28/08/25	Issued for Planning	CSSS NM

**Greig & Stephenson**  
Architects

Studio SW.201, Screenworks  
22 Highbury Grove  
London, N5 2ER  
tel. 020 7403 5511  
fax. 020 7403 5544  
email. info@gands.co.uk

CLIENT KIRKLEES COUNCIL

PROJECT HUDDERSFIELD MARKET

STATUS S3 - FOR REVIEW AND COMMENTS

DRAWING General Arrangement - Storage Compound Plan, Elevations and Sections as Proposed

SCALE	DRW   CHKD	RVW   APRV	DATE
1:100 @ A1	TS NM	TS NM	24/03/25

DRAWING NUMBER	REVISION
HMH-GSA-WC-XX-D-A-0415	P02

