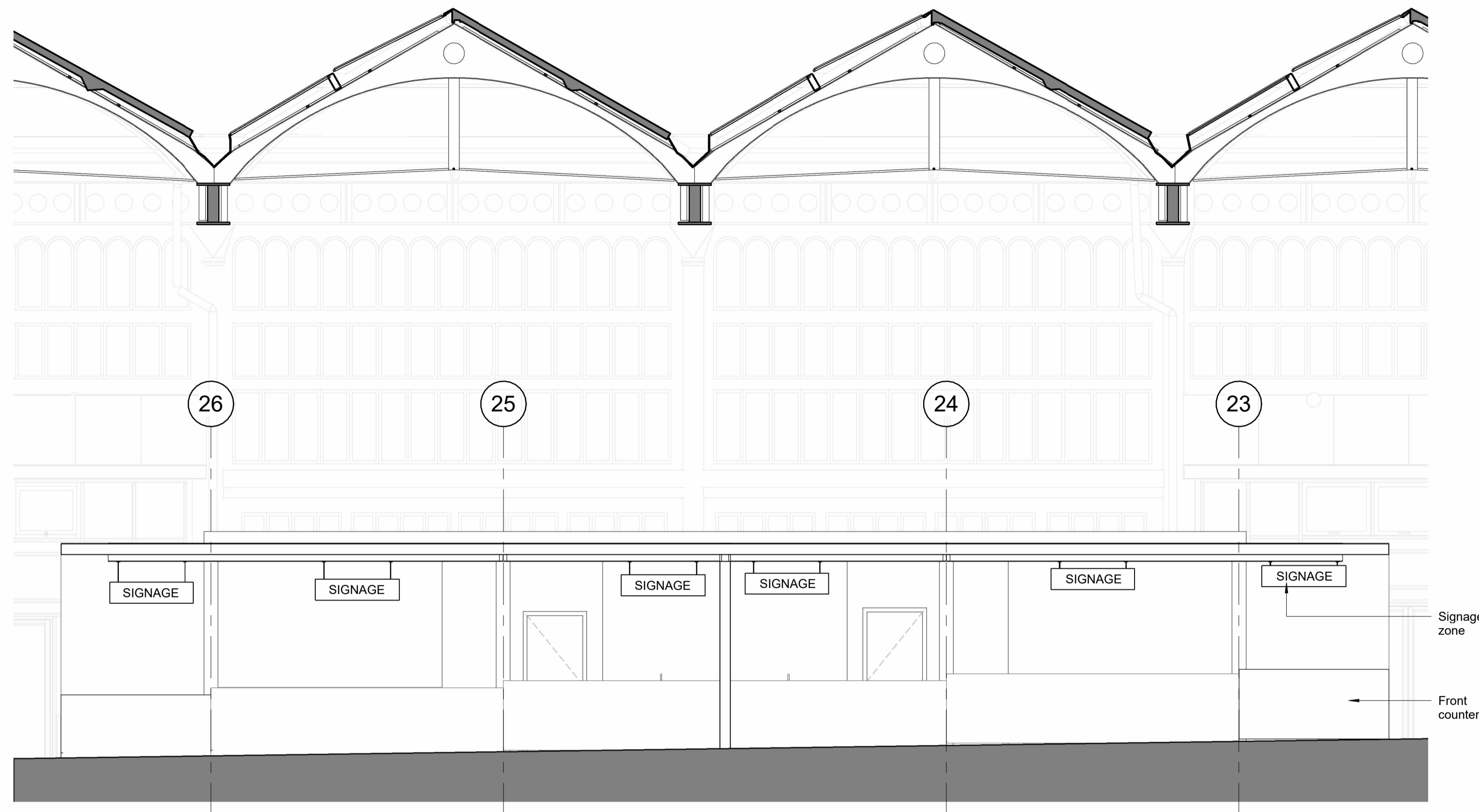


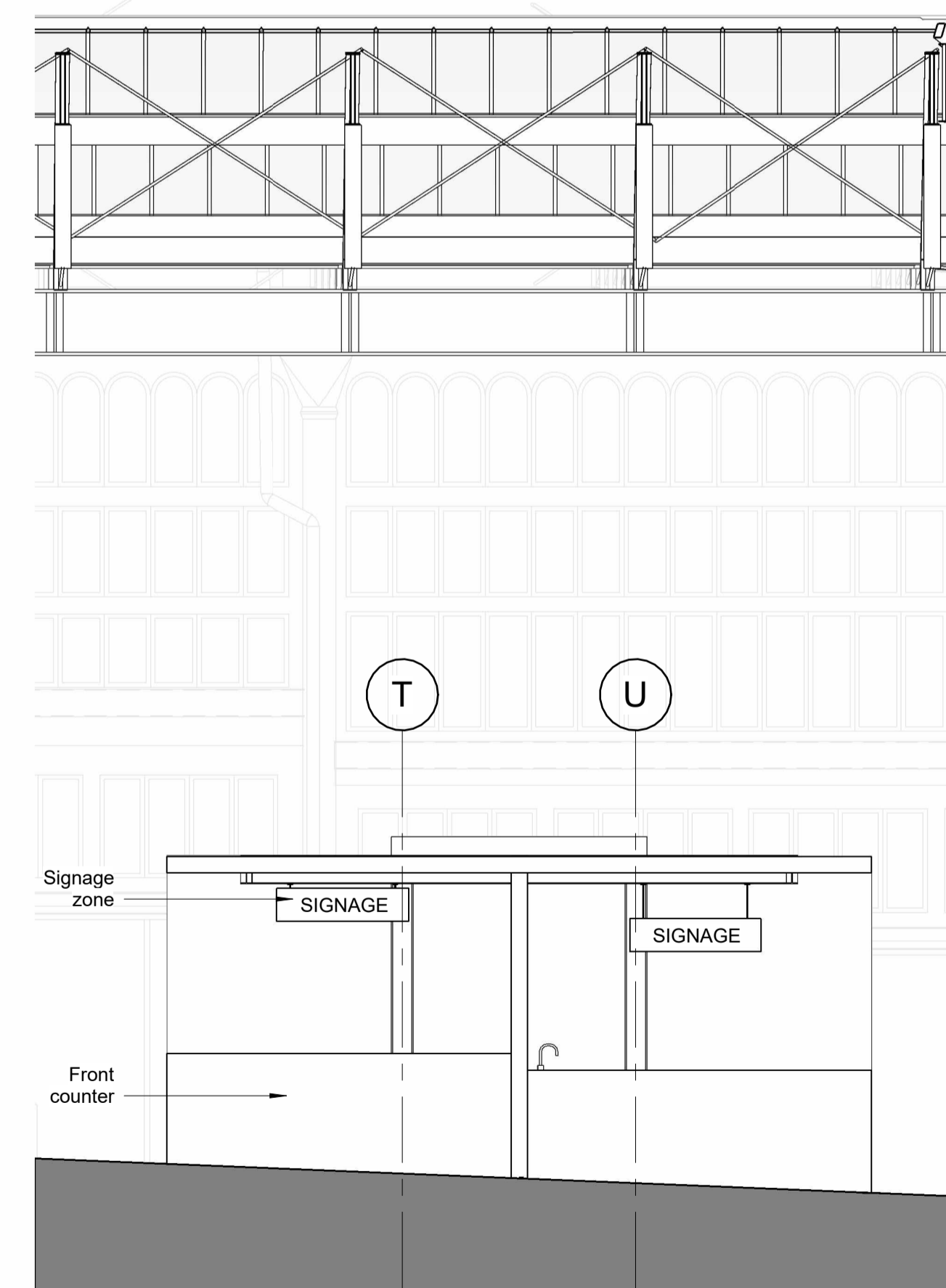
1 Fixed Pitch 04 - Elevation  
1 : 50



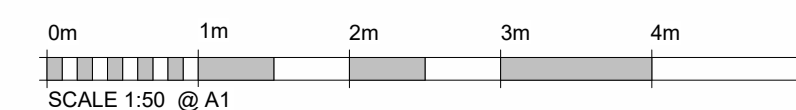
2 Fixed Pitch 04 - Elevation  
1 : 50



4 Fixed Pitch 04 - Elevation  
1 : 50



3 Fixed Pitch 04 - Elevation  
1 : 50



Do not remove this panel from this drawing. Do not scale from this drawing. All dimensions and levels are to be checked on site. All discrepancies, errors and omissions must be reported immediately to Greig and Stephenson Ltd. The contractor is responsible for setting out, checking and confirming all site conditions prior to fabrication and construction. All building and fabrication works are to be carried out in accordance with the Local and National Building Codes, practices and standards. This drawing is copyright and must not be reproduced without the written consent of Greig and Stephenson Ltd. Greig and Stephenson Ltd. accept no responsibility for any loss or expenses arising from use of this drawing for any purpose other than those agreed in writing by Greig and Stephenson Ltd. This drawing is not to be used by any third party without the written consent of Greig and Stephenson Ltd.

Stage 3 market stall layouts have been developed to allow to develop the design for cost certainty, statutory and client approval. Assumptions have been made for the provisions to allow for flexibility in arrangement when the tenants are confirmed.

Final fit out arrangement subject to change to suit the specific requirements of the tenant fit out.

Fixed Pitch 04 is based on a maximum of 5 no. trader pitches. Therefore provisions for 5 separate traders are required.

REV	DATE	COMMENT	CS/SS	NM
	28/08/25	Issued for Planning		

**Greig & Stephenson Architects**  
 Studio SW.201, Screenworks  
 22 Highbury Grove  
 London, N5 2ER  
 tel. 020 7403 5511  
 fax. 020 7403 5544  
 email. info@gands.co.uk

CLIENT KIRKLEES COUNCIL

PROJECT HUDDERSFIELD MARKET

STATUS S3 - FOR REVIEW AND COMMENTS

DRAWING Internal Arrangement Details - Fixed Pitch 04 Sheet 02

SCALE	DRW   CHKD	RVW   APRV	DATE
1 : 50 @ A1	CS NM	SS NM	24/03/25

DRAWING NUMBER	REVISION
HMH-GSA-MH-XX-D-A-0661	P01