



# HUDDERSFIELD MARKET REGENERATION PROJECT

RIBA Stage 3

**Waste Management Strategy Proposal**

HMH-GSA-XX-XX-T-A-1017

December 2025 - Rev P01

**Greig &  
Stephenson**  
Architects

 **Kirklees**  
COUNCIL

## Introduction

Studio SW 201  
 ScreenWorks  
 22 Highbury Grove  
 London  
 N5 2ER  
 T / +44 (0)20 7403 5511  
 E / info@gands.co.uk

All rights in this work are reserved. No part of this work may be reproduced, stored or transmitted in any form or by any means (including without limitation by photocopying or placing on a website) without the prior permission in writing of Greig & Stephenson Architects except in accordance with the provisions of the Copyright, Designs and Patents Act 1988. Applications for permission to reproduce any part of this work should be addressed to GSA at info@gands.co.uk.

Undertaking any unauthorised act in relation to this work may result in a civil claim for damages and/or criminal prosecution. Any materials used in this work which are subject to third party copyright have been reproduced under licence from the copyright owner except in the case of works of unknown authorship as defined by the Copyright, Designs and Patents Act 1988. Any person wishing to assert rights in relation to works which have been reproduced as works of unknown authorship should contact GSA at info@gands.co.uk

Greig & Stephenson Architects asserts its moral rights to be identified as the author of this work under the Copyright, Designs and Patents Act 1988.

This document has been prepared by Greig & Stephenson Architects (GSA) to supplement the application for planning and Listed building consent for works at Huddersfield Market. This is a waste strategy document to replace the equivalent section of the Design and Access Statement.

Further detailed information in relation to the proposed design can be found in the submission drawings and other supplementary reports such as the Planning Statement, Heritage Impact Assessment, Repair and Restoration Methodology, Transport Assessment, Noise Impact Assessment and Drainage Strategy.

Revision	Description	Status	Author	Checker	Date
P01	Issued for submission	S3 - For Review and Comments	NM	AP	01/12/2025

## Project Team



Client

**Greig & Stephenson**  
 Architects  
 Architect & Lead Consultant



MEP Engineers



Structural & Civil Engineers



Cost Consultant



Fire Consultant



Heritage Consultant



Access Consultant



Main Contractor



MEP Engineers

## 1.1 Waste Strategy Overview

Incoming Waste regulations will require the client to sort waste at source for collection. The waste collection frequency can be adjusted to suit the actual amount of waste produced by the market when in use.

Future market waste volume is difficult to predict at this stage due to the proposed works and ever changing retail and markets landscape. Here the proposals have provided an outline strategy which can be adapted to suit the market as it grows. The principle is to include for separate waste streams to suit incoming waste regulations and to provide larger provision as there is already a known lack of waste storage, which is difficult to manage.

It is understood that all waste will be collected by the council's waste collection service, except the roll on roll off compactor, which will be via separate private hire by the market. Collection frequency is to be arranged to suit the actual waste produced upon operation. A summary of the strategy is shown here.

### Food Waste

Food waste anticipated from F&B Units, Market Cafe, Incubator Kitchen and traders that sell fresh food such as Fruit and Veg.

### General non recyclable waste

General waste that cannot be recycled from traders and from the public. Anticipated that market staff will periodically collect this waste from traders and public stations throughout the day to avoid interface of traders with the bin store.

### Mixed recycling

Same strategy as general non recyclable waste, but collected separately to allow for sorting at the point of collection.

### Cardboard

Traders that produce frequent amount of cardboard are to request cardboard cage from market staff. The cages are replenished and managed by market staff to avoid the need for individual traders to visit the bin store. Cardboard waste and cages will be stored in waste compound.

### Glass

Anticipated glass waste will be bottles and containers from the F&B Units. Market staff will collect glass waste from F&B Units and transfer them to the waste compound periodically. Glass crusher located at waste compound.

### Meat Products

Required chilled storage. No space for central location, proposed that storage is located on the relevant stalls. Strategy to be revisited as trader list is populated.

### Waste Cooking Oil

Same strategy as Meat Products.

Waste Stream	Method of Collection	Method of Disposal
Food Waste	Collected by traders and transferred into 240L bin in waste compound by market staff.	Markets staff to transfer 240L bins to main waste compound. Markets to investigate food waste recycling on site options
Cardboard	Traders store waste on their stall and load into cages to be supplied and managed by the market staff. Full and empty cages to be stored and transferred to the main waste compound by the market staff.	Roll on Roll off cardboard compactor located in Waste Compound. Contracted by Market. Confirmation required if a baler is required or whether the Ro/Ro has compacting capabilities.
General Waste from traders, including hot & beverage waste	F&B waste will be deposited by public and staff into small recycling station. Traders to retain waste on their stall for collection by market staff using 240l bins or single person operated open bin on castors.	Stations periodically sorted. When stations are full, they are moved to waste compound by staff and emptied into 1100l Euro Bins.
Mixed Recycling Small Cardboard and paper / packaging / metal / plastic (TBC)	Same strategy as general waste but sorted at point of collection.	As General waste but separate and clearly identified bins to denote mixed recycling.
Glass	Market staff to collect bottles from bins and hot food units in a 120l bins, and wheel bins down to waste compound for crushing.	Market Staff move from main building to waste compound crush glass and store for collection
Meat Products	Traders dispose in 240l bins and store within their own cold rooms in fixed stalls. TBC with Markets operation team	These will be emptied by a licensed contractor. Contracted by Market - rent charged to specific traders.
Waste Cooking Oil	Strategy to be agreed with Markets and Waste Team	Strategy to be agreed with Markets and Waste Team

## 1.2 Waste Strategy Access

### Waste Routes

The waste compound will house all collected waste from the main market.

The main compound is accessed by the market staff only.



Route between the main market hall and waste compound



Market staff collection point and route for glass waste from main market to waste compound



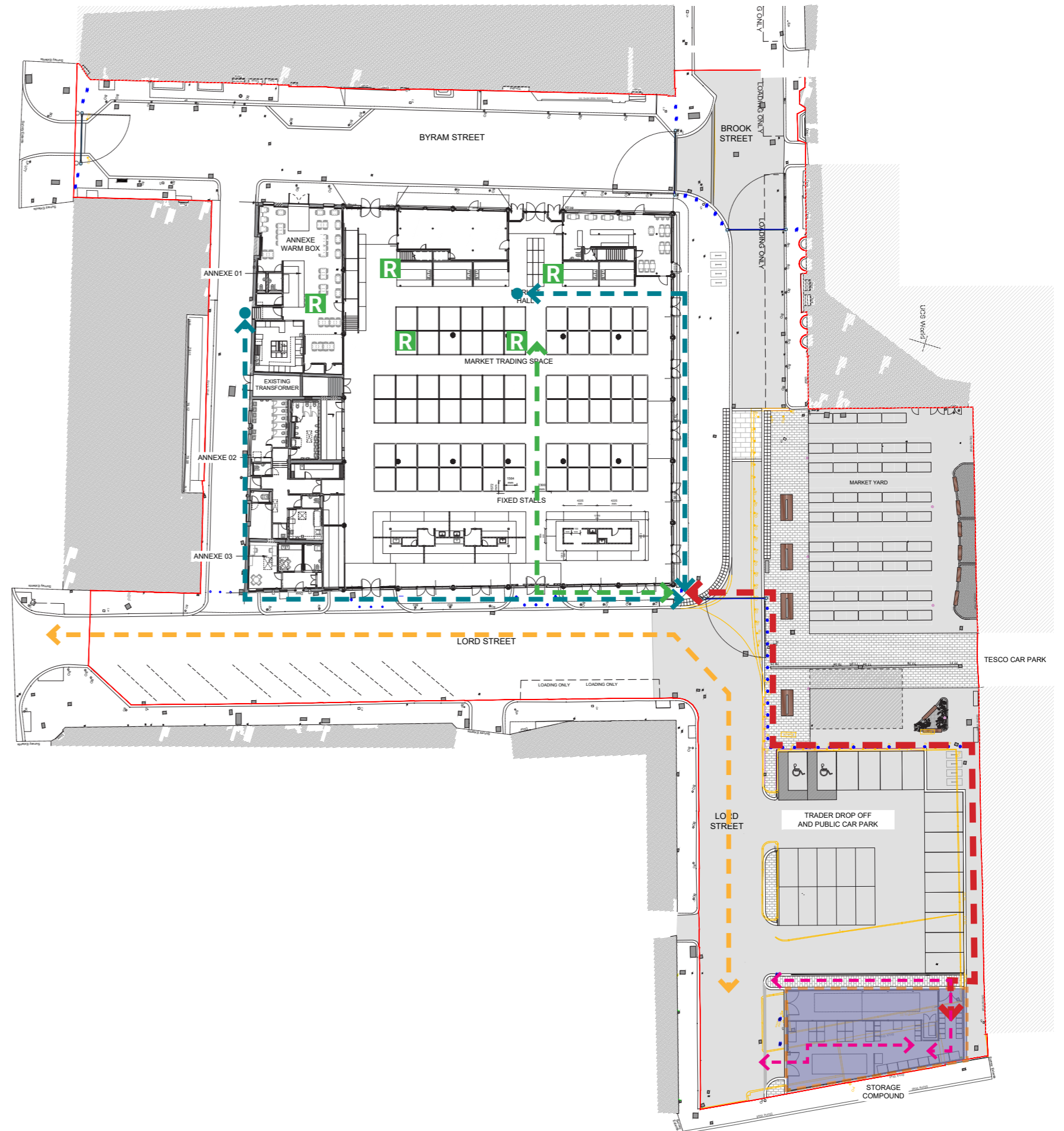
Periodical waste collection from public recycling stations by market staff.



Staff to move bins to pavement and back during collection.



Refuse Vehicle Route.








### 1.3 Waste Compound

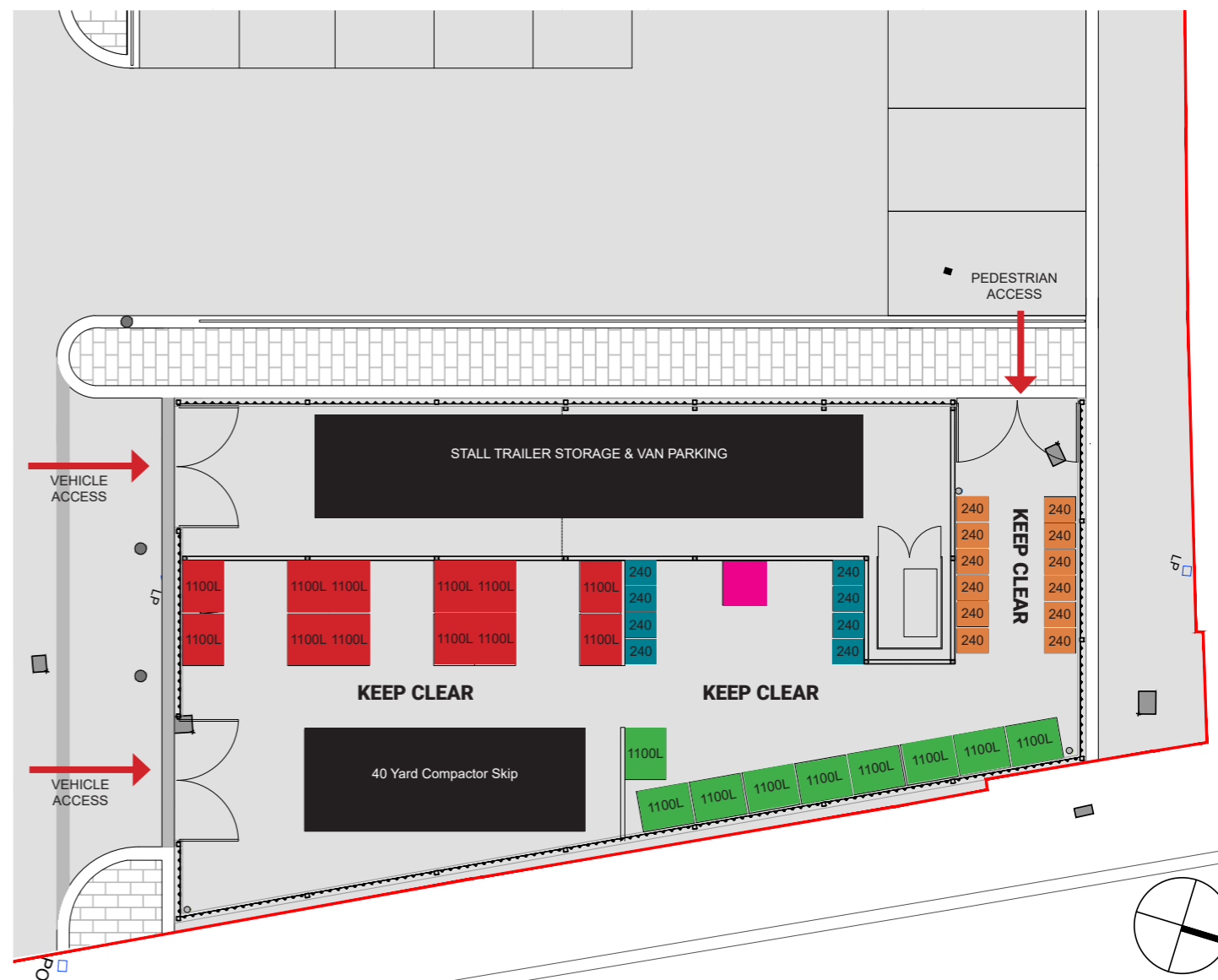
#### Waste Compound

New larger waste compound provided in location of existing compound. This will serve as a storage for waste until periodic collections are made by refuse vehicles.

Space and access is provided for the market staff to move full bins to pavement for collection.

- 1 x 1no. Roll on Roll off 40 yard Compactor - Cardboard Only
- 21 x 1100L Euro Bin - General and Mixed Recycling (split to suit the waste production of market in operation).
- 8 x 240L Wheeled Bin - Glass
- 12 x 240L Wheeled Bin - Food Waste
- 1 x Glass Crusher

-  1100L Euro Bin Mixed Recycling
-  1100L Euro Bin General Waste
-  240l Wheeled Bin Food
-  240l Wheeled Bin Glass
-  Glass Crusher



## 1.4 Waste Compound Catalogue

### Bins Catalogue

The following page shows the specification for the bins, cages and equipment required for the strategy.

#### General Waste / Mixed Recycling Collection Bin

Capacity: 1100L or 440KG

Dimensions: W1370 x H1470 x D1118m

Material: Polyethylene

Payload - 440 Kg

Glass and Food Waste Collection Bin

Capacity: 240L

Dimensions: Height 1100 mm; Width 580 mm; Depth

740 mm

Material: Polyethylene

Payload - 440 Kg



1100L



240L

#### Glass crusher GC100T

Bottles are fed into an opening where the glass is crushed and collected in a wheel bin below. With the ability to crush up to 100 bottles in just 2 minutes, the crushed glass or 'cullet' is 80% smaller in volume and recycle-ready. Operating at a height of less than 1.7m, the GC100T Glass Crusher can be installed in store rooms, waste areas or in the bar area itself.

Dimension: 600 (W) x 590 (D) x 1685 (H) mm

Capacity : 120 lit bin

Degree of Compression 80 %

Machine weight: 180 kg

Noise level : 68 dB



#### 4 sided Jumbo Demountable Roll Cage Cardboard

Store and transport bulky and multiple items with this pallet sized (jumbo) demountable roll cage container truck. It has 4 sides to keep items contained and offers a drop down door for easy access and removal of containers.

Dimension: 800 x 1200 x 1820mm

Base shelf size: 800 x 1200mm

Mesh size: 150 x 400mm

Load capacity: 500 kg

Load capacity per shelf: 100 kg

Unit weight: 42 kg



#### Self contained Side Loaded Cardboard Compactor

Roll on Roll off Skip

Compact and store cardboard waste

Dimension: Approx 2400 x 6000

