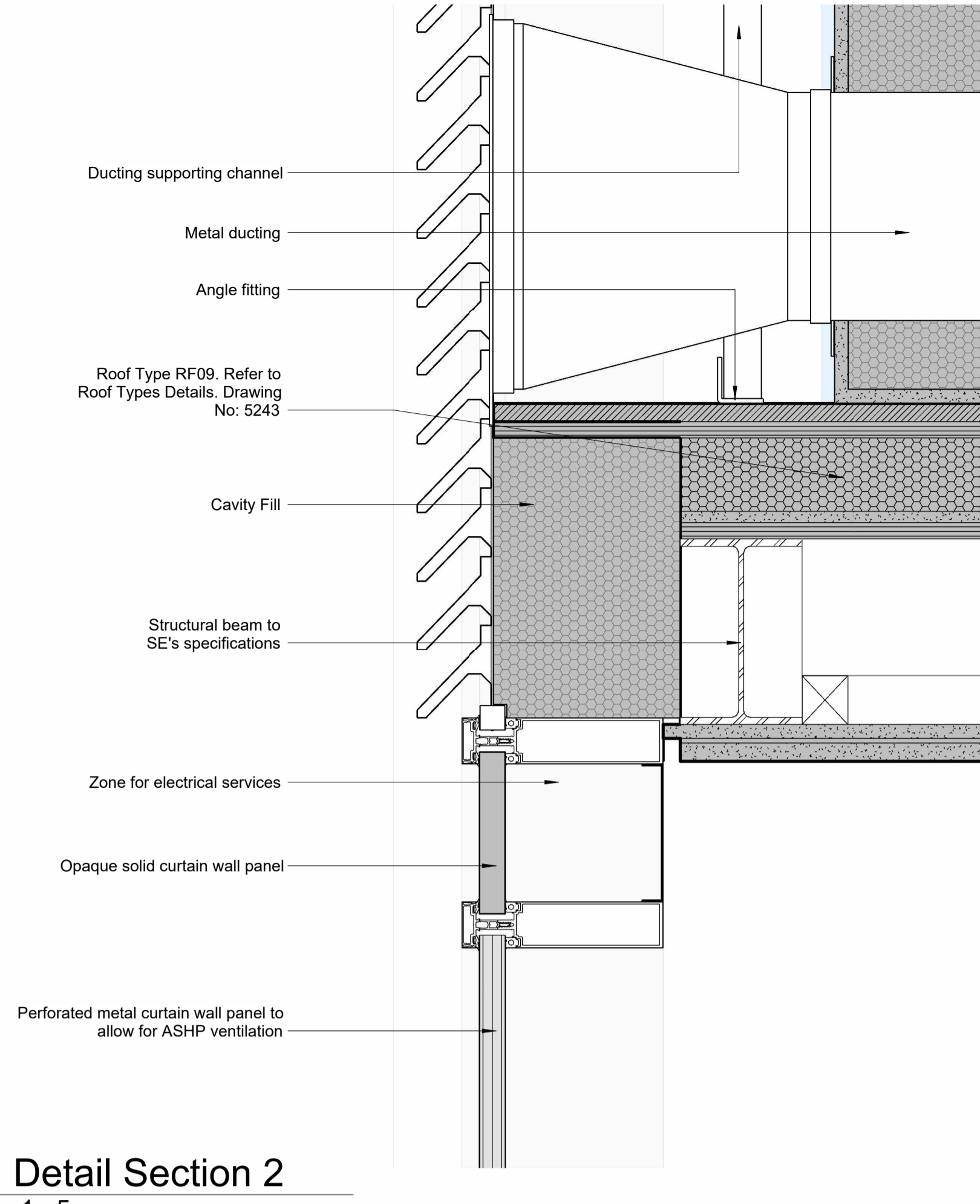
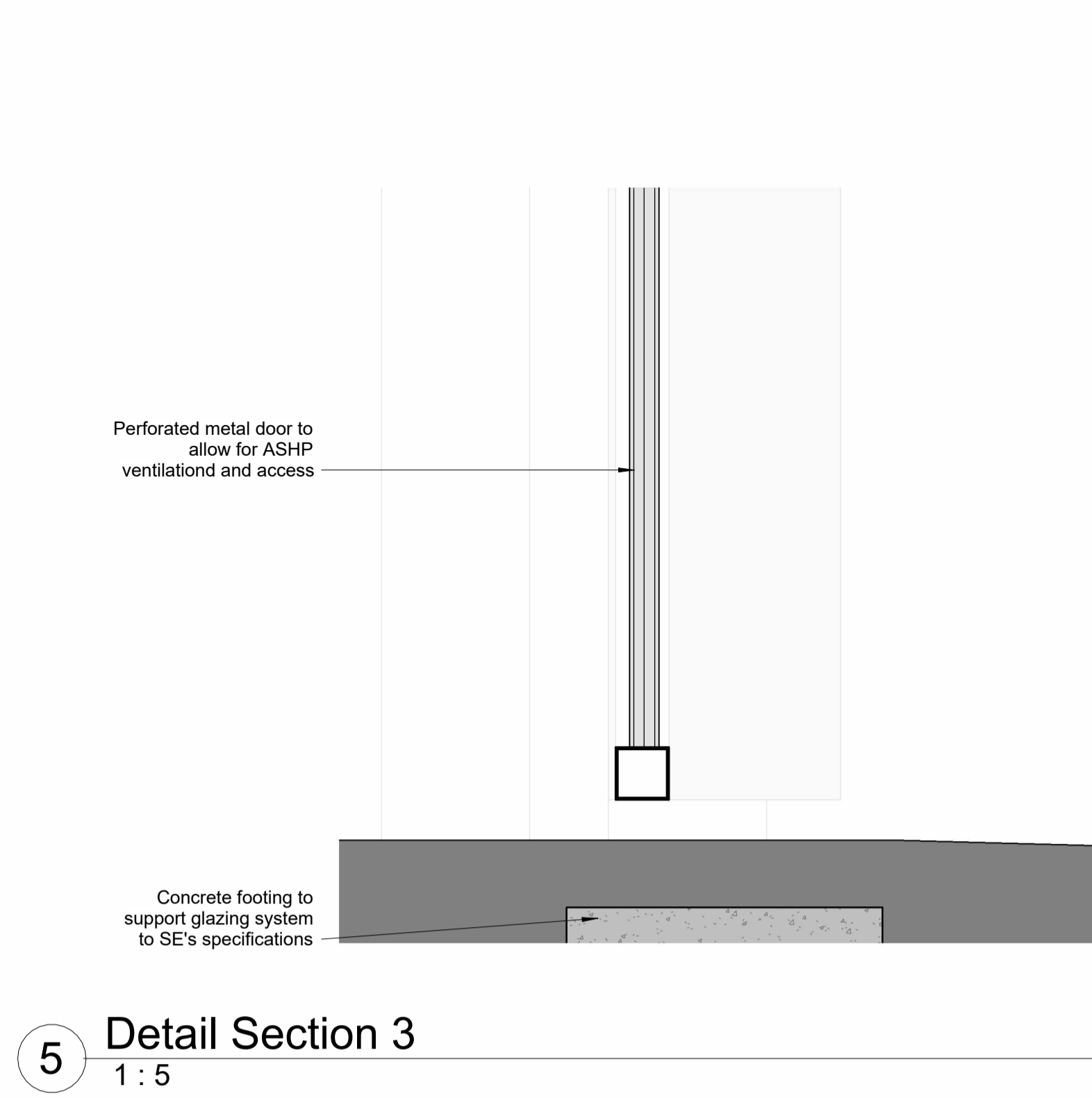


3 Detail Section 1  
1:5



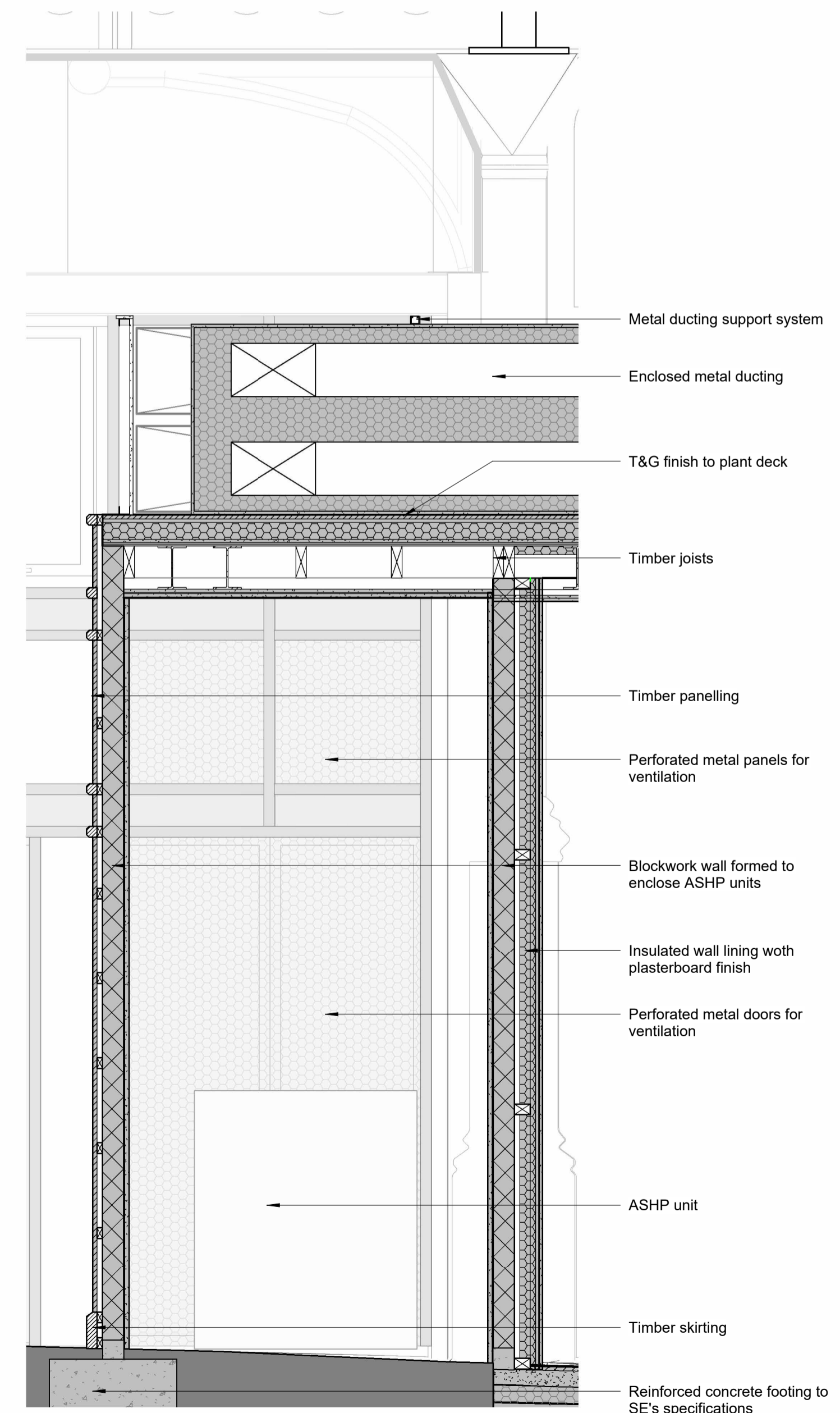
4 Detail Section 2  
1:5



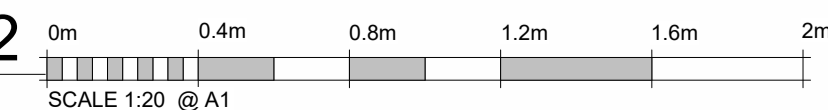
5 Detail Section 3  
1:5



1 ASHP Enclosure Internal Elevation  
1:5



2 Byram St Cafe/Bar Unit 02  
ASHP Enclosure Section 2  
1:5



Do not remove this panel from this drawing. Do not scale from this drawing. All dimensions and levels are to be checked on site. All discrepancies, errors and omissions must be reported immediately to Greig and Stephenson Ltd. The contractor is responsible for setting out, checking and confirming all site conditions prior to fabrication and construction. All building and fabrication works are to be carried out in accordance with the Local and National Building Codes, practices and standards. This drawing is copyright and must not be reproduced without the written consent of Greig and Stephenson Ltd. Greig and Stephenson Ltd. accept no responsibility for any loss or expenses arising from use of this drawing for any purpose other than those agreed in writing by Greig and Stephenson Ltd. This drawing is not to be used by any third party without the written consent of Greig and Stephenson Ltd.

REV	DATE	COMMENT	DRW	APRV
	29/08/25	Issued for Planning	CS/SS	NM

**Greig & Stephenson Architects**

Studio SW.201, Screenworks  
22 Highbury Grove  
London, N5 2ER  
tel. 020 7403 5511  
fax. 020 7403 5544  
email. info@gands.co.uk

CLIENT KIRKLEES COUNCIL

PROJECT HUDDERSFIELD MARKET

STATUS S3 - FOR REVIEW AND COMMENTS

DRAWING Typical ASHP Rejection Unit Enclosure Design Intent Sheet 2

SCALE	DRW	CHKD	RVW	APRV	DATE
As indicated @ A1	SS	NM	NM	AP	24/03/25

DRAWING NUMBER	REVISION
HMH-GSA-MH-XX-D-A-7108	P01