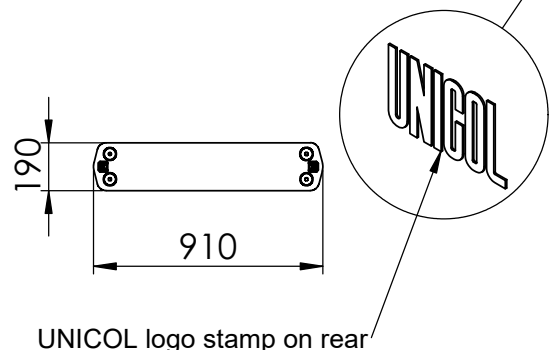
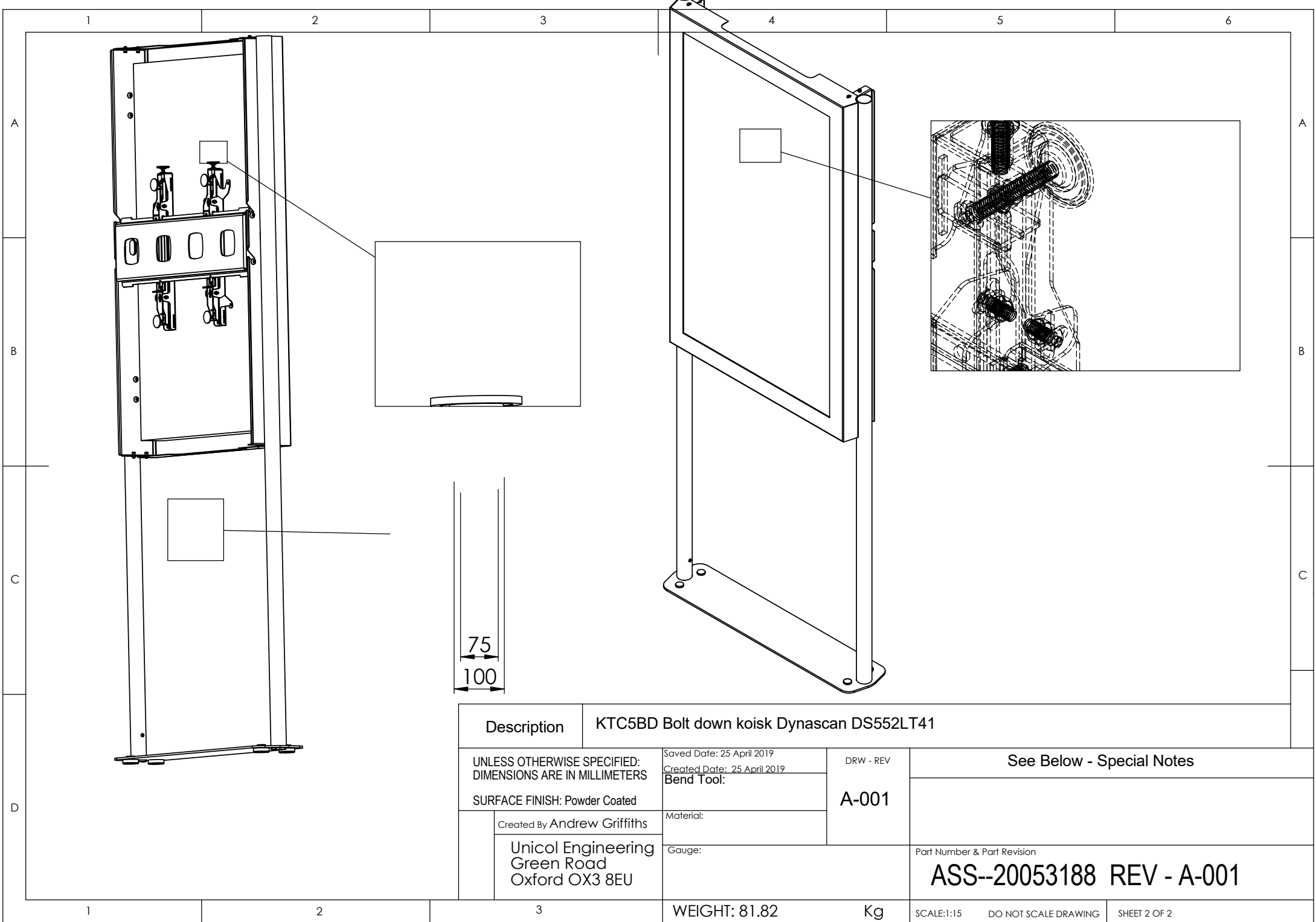


BOM Table			
NO	Part Number	Description	QTY.
1	REB-28RB	Ribbed External Bung 28mm Round Black	4
2	PAR--2054476	KTC5 Dynascan DS552LT41 front cover	1
3	PAR--2053265	KTC5 Samsung OM 55 DW rear cover	1
4	BH-MET-6X16-HT-CZN	Button Head Screw M6 X 16 (High Tensile Bright Zinc Plated Clear Passivated)	11
5	BH-MET-10X20-HT-BO	Button Head Screw M10 X 20 (High Tensile Black Oxide)	12
6	ASS--20053189	KTC5 Kiosk Totem Screen rail 55 inch 90mm screen	1
7	Ass--20018757	Vwa3 - Vwa1 - Left And Right Arms Landscape	1
8	ASS--20052164	KTC5 Kiosk side mount plate 55 inch	2
9	ASS--20051374	KTC5BD 55 inch bolt down kiosk base	1
10	ASS--20052042	x2 2335MM Kiosk Totem Columns	1
11	Par--20038916	Dynascan Ds551t4 55 Inch	1



Description		KTC5BD Bolt down kiosk Dynascan DS552LT41	
UNLESS OTHERWISE SPECIFIED: DIMENSIONS ARE IN MILLIMETERS	Saved Date: 25 April 2019	DRW - REV	See Below - Special Notes
	Created Date: 25 April 2019		
SURFACE FINISH: Powder Coated	Bend Tool:	A-001	Part Number & Part Revision
	Created By Andrew Griffiths		
Unicol Engineering Green Road Oxford OX3 8EU	Material:	ASS--20053188 REV - A-001	
	Gauge:		



Description		KTC5BD Bolt down koisk Dynascan DS552LT41			
UNLESS OTHERWISE SPECIFIED: DIMENSIONS ARE IN MILLIMETERS	Created Date: 25 April 2019	DRW - REV	See Below - Special Notes		
	Created Date: 25 April 2019				
SURFACE FINISH: Powder Coated	Bend Tool:	A-001	Part Number & Part Revision		
	Material:				
Created By Andrew Griffiths	Gauge:	ASS--20053188 REV - A-001			
Unicol Engineering Green Road Oxford OX3 8EU	WEIGHT: 81.82 Kg		SCALE:1:15	DO NOT SCALE DRAWING	SHEET 2 OF 2

DETAIL P